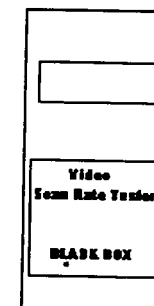


BLACK BOX Catalogue Ltd
The Source for Connectivity



TSM7385-UK



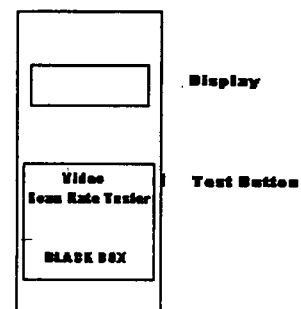
Video Scan Rate Tester

TECHNICAL: (0118) 931 2233
SALES: (0118) 965 5100
FAX: (0118) 931 1727
ADDRESS: 15 Cradock Road, Reading, Berkshire RG2 0JT
WEB: www.blackbox.co.uk

The professional tester for precise measurement of a monitor's video scan rate.

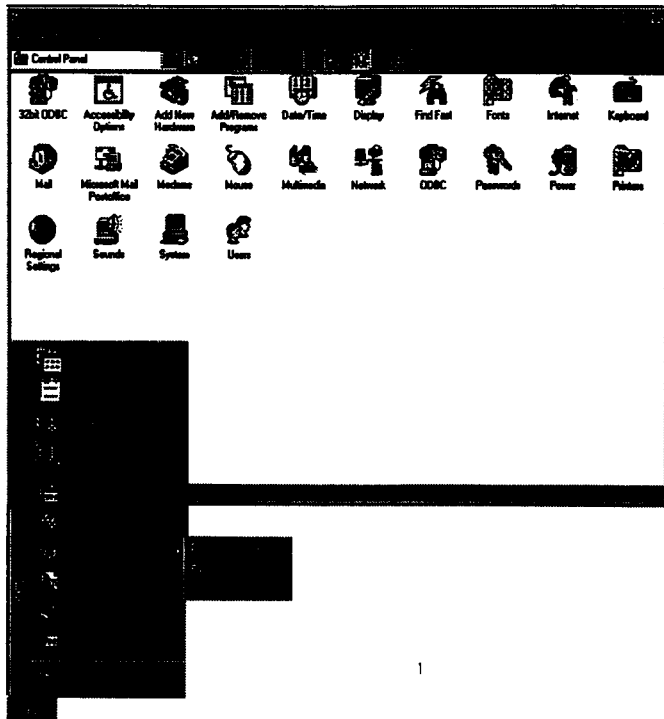
Device Operation

- Hold the front of the tester about 10 cm from the monitor screen.
- Measurement begins when the side key is pressed.
- After about 1 second, the video scan rate is shown in Hertz on the display. The display has three digits and a decimal point for measurements to 99.9Hz. There is no decimal point after 100 Hz. Because the Video Scan Rate Tester cannot be held absolutely still, minor fluctuations of the decimal point can occur. This has nothing to do with the quality of the monitor.
- As soon as the key is released, measurement is complete and the tester switches itself off.
- The operation of the device can best be tested after the computer has been booted up at the DOS level. In DOS, the video scan rate is usually 70 Hz. Another test source is a mains-operated luminous source, such as a fluorescent neon tube light. The tester should show a frequency of 100 Hz \pm 1 digit.
- If a monitor is clearly flickering despite a video scan rate of >70 Hz, the graphics card is probably configured to an interlaced display.



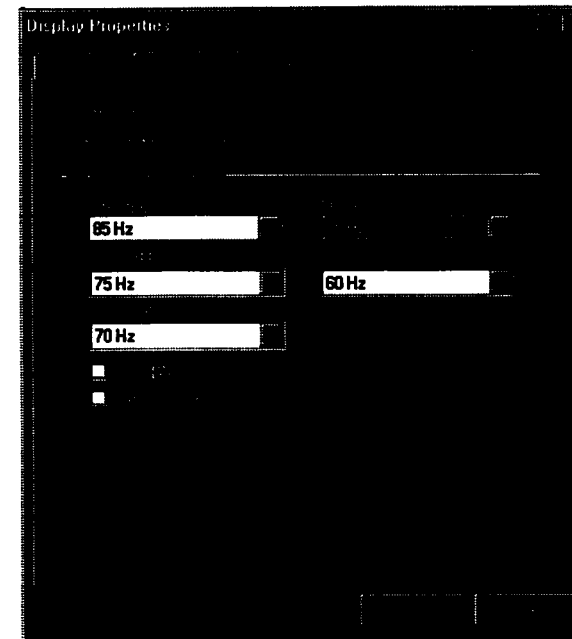
Adjustment of Monitor Frequency.

For Windows '95, select Display from the Control panel shown below.



Now select Monitor Refresh from the Display Properties menu.

An example is shown below:



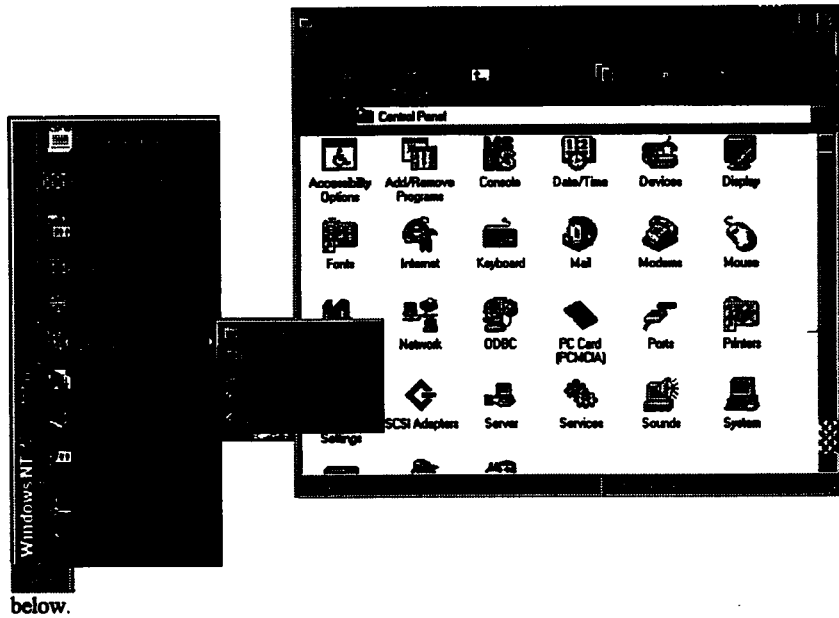
This menu is an example only.

Each different type of display adapter has a different Monitor Refresh screen when used with Windows 95.

Select the desired frequency (preferably over 75 Hz) from this menu.

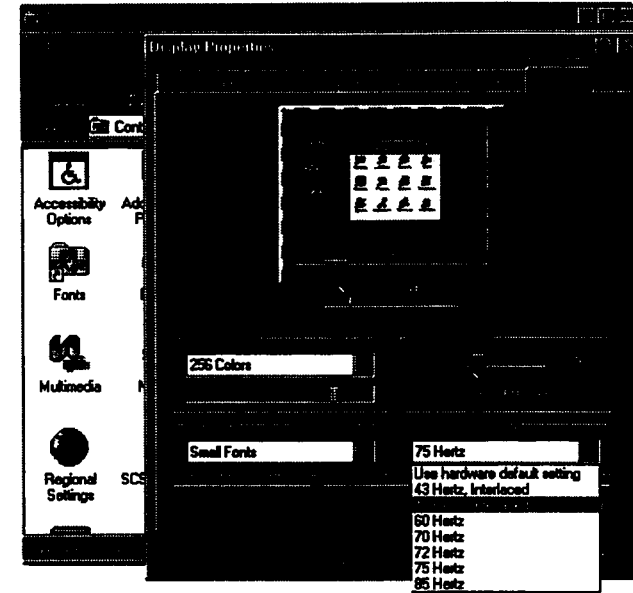


For Windows NT4, select Control Panel from the Start toolbar. Select Display as shown



below.

The display properties screen will appear. Select Settings as shown below.



Select a refresh frequency of 75 Hertz or more from the Refresh Frequency toolbar.

Before selecting OK, be sure to test this frequency first. If your graphics adapter card or monitor will not support the selected frequency, recovery of the image on the monitor can be troublesome.

The test screen allows you to verify the correct operation of your system components at this refresh rate. The screen is shown for approximately five seconds.

If the test screen appears to be satisfactory, you can select OK.

Adjustment is now complete.

