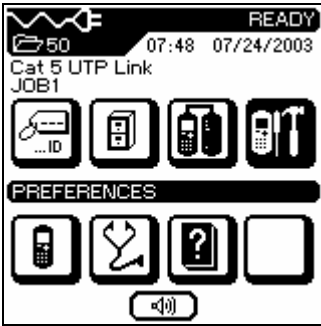

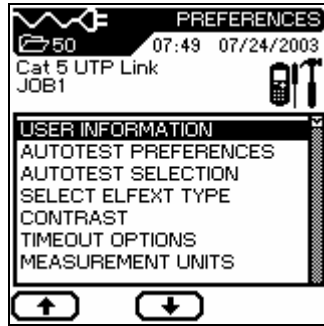


# TS2000A Quick Setup Guide

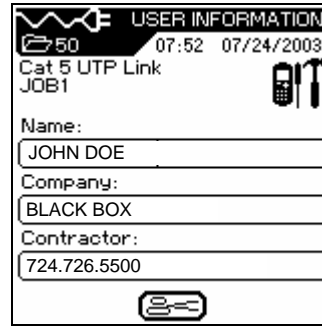
## 1. Preferences



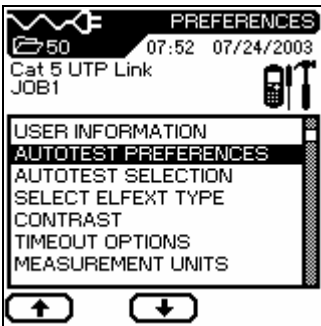
Highlight Preferences icon, press ,



Highlight User Info, press ,




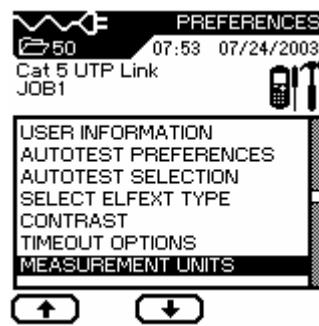
Information will be reflected in Reports,



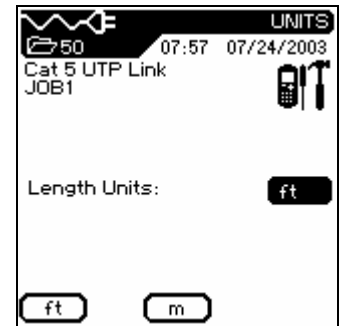
Highlight Autotest Pref, press ,




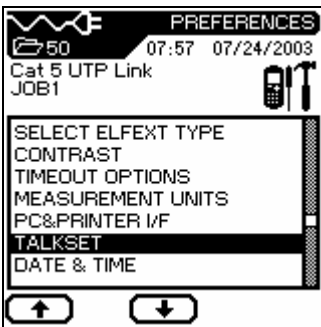
Enable features by pressing Top left Button, press ,



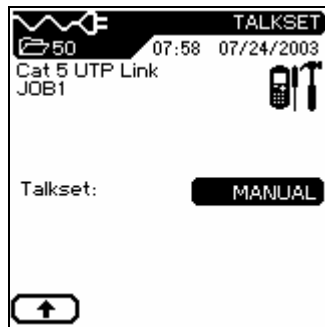
Highlight Measurement Units, press ,




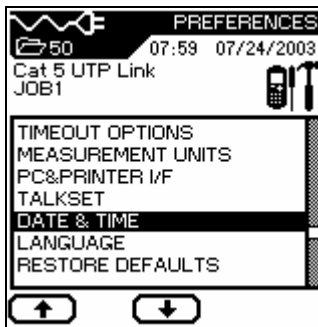
Press Top left button for feet, Top middle button For meters, press ,



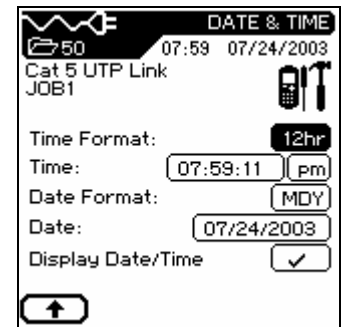
Highlight Talkset, press ,

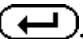
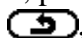


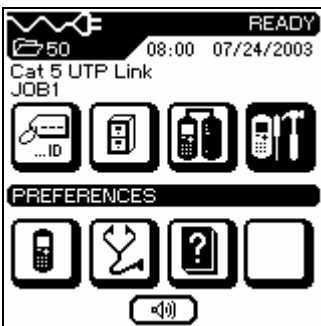
Press Top left button for Auto, Top middle for Manual, press ,



Highlight Date & Time, press ,

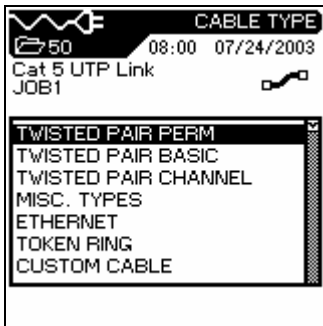


Use Arrow buttons to highlight line items to be update, press , then press ,

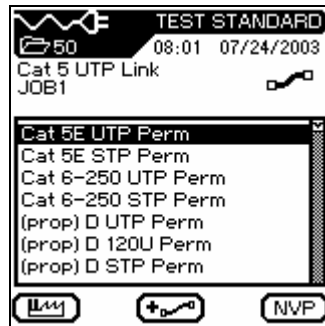


Display will revert to Ready Screen,

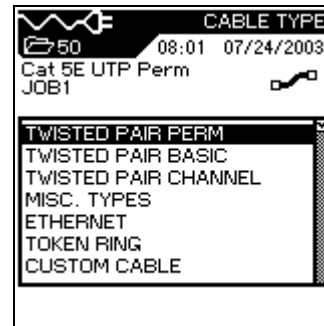
## 2. Cable Select



Press Cable Select button will bring up screen, press .

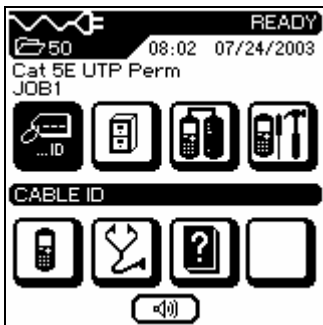


Highlight CAT 5E UTP Perm, press .

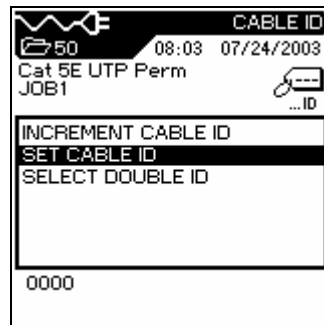


Display will revert to previous screen, press .

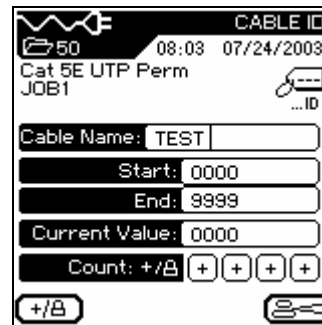
## 3. Cable ID



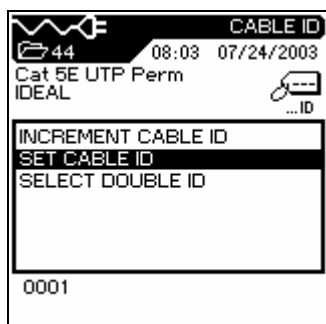
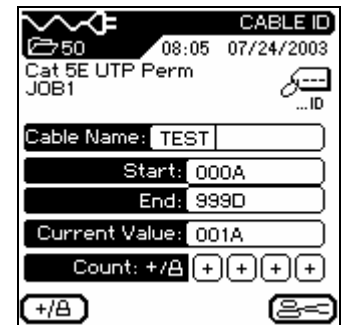
Highlight Cable ID icon, Press .



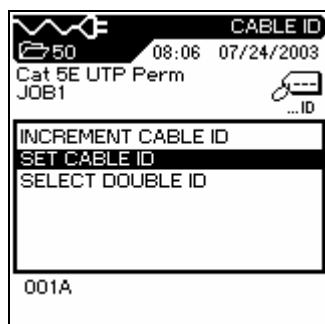
Highlight Set Cable ID, press .



Input info, press , or Input info, press .

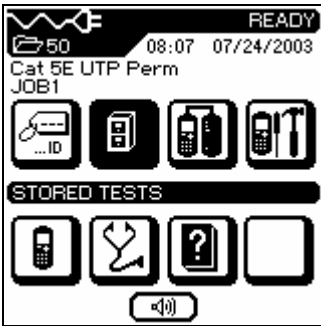


Display will revert to Previous screen, Press .

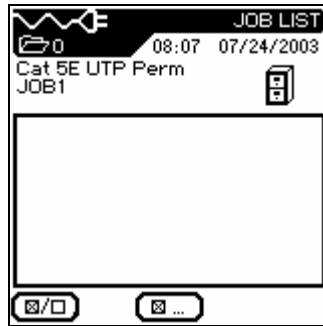


Display will revert to previous screen, press .

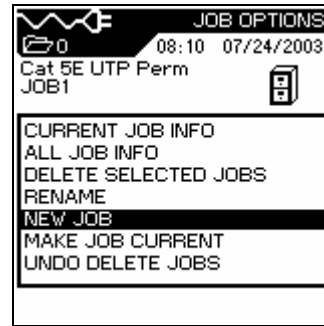
## 4. Stored Tests



Highlight Stored Tests icon, press



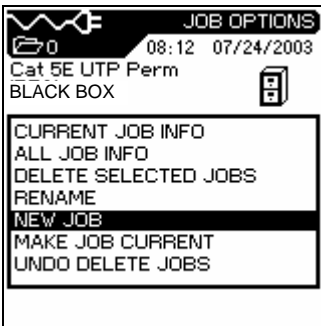
The screen will display Jobs, Upper left corner of screen Shows zero (0) no tests stored, Press the Top middle button,



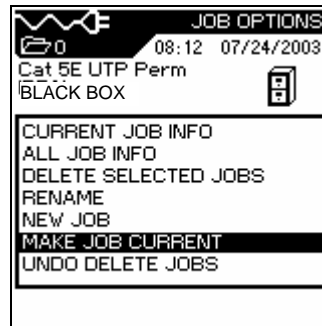
Highlight New Job, press



Input New Job Name, press



The display will revert To the previous screen,

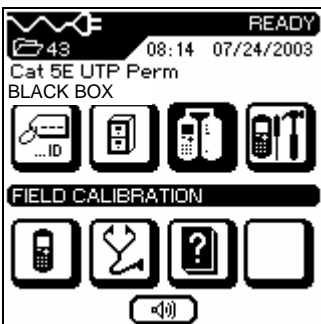


Highlight Make Job Current, press



The display will revert to the previous screen, press

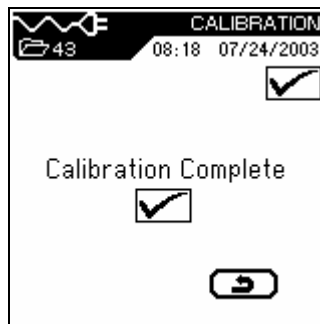
## 5. Field Calibration



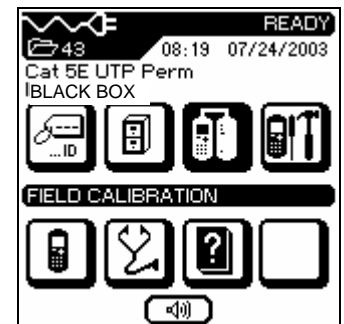
Highlight Field Calibration Icon, press



With the testers connected with the Field Calibration Adapter and Toner button On Remote Unit press, Press the Top left button,



Successful Calibration, press

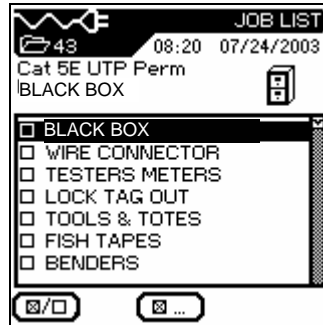


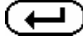
Display will revert to Ready Screen,

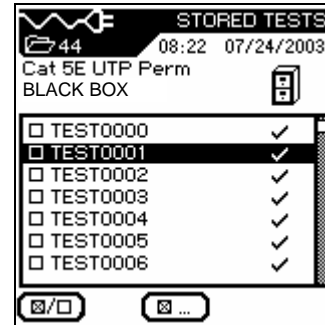
## 7. Stored Tests




Highlight Stored Tests icon,  
Press ,



A list of Jobs will be shown  
Highlight a job, press ,



A list of tests will be shown,  
TEST0000 thru TEST0007...etc.  
Highlight a test and press ,



Test result TEST001 will  
appear