



# **MDS921AE-10BTS-R2**

ATM Based G.SHDSL Modem











## Table of Contents

Description .....	6
Applications .....	9
Packet Filtering.....	10
Circuit Gateway .....	10
Application Gateway.....	10
Getting to know about the router .....	12
Rear Panel .....	13
Configuration to the router.....	14
Step 1: Check the Ethernet Adapter in PC or NB .....	14
Step 2: Check the Terminal Access Program .....	14
Step 3: Check the Web Browser in PC or NB.....	14
Step 4: Determine Connection Setting .....	14
Step 5: Install the SHDSL Router .....	14
Configuration via Web Browser .....	15
Basic Setup .....	18
Bridge Mode .....	18
Routing Mode.....	20
DHCP Server.....	20
DHCP Client.....	22
PPPoE or PPPoA .....	24
IPoA or EoA.....	26
Advanced Setup .....	29
WAN.....	31
Bridge.....	33
VLAN.....	35
Route.....	38
NAT/DMZ.....	42
Virtual Server.....	45
Administration .....	57
Utility .....	63
Status .....	65
LAN-to-LAN connection with bridge Mode .....	66
CPE Side.....	67
LAN to LAN Connection with Routing Mode.....	69
CPE side .....	71
Configuration via Serial Console or Telnet with Manu Driven Interface .....	74
Configuration via Serial Console or Telnet .....	75
Window structure.....	76
Configuration .....	82
Status .....	83

.....

Show .....	84
Write .....	84
Administration .....	85
Setup.....	89

## *Description*

The SHDSL (Single-Paired High Speed Digital Subscriber Loop) routers comply with G.991.2 standard with 10/100 Base-T auto-negotiation. It provides business-class, multi-range from 64Kbps to 2.304Mbps payload rates over existing single-pair copper wire. The SHDSL routers are designed not only to optimize the service bit rate from central office to customer premises also it integrates high-end Bridging/Routing capabilities with advanced functions of Multi-DMZ, virtual server mapping and VPN pass-through.

Because of rapid growth of network, virtual LAN has become one of the major new areas in internetworking industry. The SHDSL routers support port-based and IEEE 802.1q VLAN over ATM network.

The firewall routers provide not only advanced functions, Multi-DMZ, virtual server mapping and VPN pass-through but advanced firewall, SPI, NAT, DoS protection serving as a powerful firewall to protect from outside intruders of secure connection.

The SHDSL routers allow customers to leverage the latest in broadband technologies to meet their growing data communication needs. Through the power of SHDSL products, you can access superior manageability and reliability.

## **Features**

- Easy configuration and management with password control for various application environments
- Efficient IP routing and transparent learning bridge to support broadband Internet services
- VPN pass-through for safeguarded connections
- Virtual LANs (VLANs) offer significant benefit in terms of efficient use of bandwidth, flexibility, performance and security
- Build-in advanced SPI firewall (Firewall router)
- DMZ host/Multi-DMZ/Multi-NAT enables multiple workstations on the LAN to access the Internet for the cost of IP address
- Fully ATM protocol stack implementation over SHDSL
- PPPoA and PPPoE support user authentication with PAP/CHAP/MS-CHAP
- SNMP management with SNMPv1/SNMPv2 agent and MIB II
- Getting enhancements and new features via Internet software upgrade

## **Specification**

### **Routing**

- Support IP/TCP/UDP/ARP/ICMP/IGMP protocols
- IP routing with static routing and RIPv1/RIPv2 (RFC1058/2453)
- IP multicast and IGMP proxy (RFC1112/2236)
- Network address translation (NAT/PAT) (RFC1631)
- NAT ALGs for ICQ/Netmeeting/MSN/Yahoo Messenger
- DNS relay and caching (RFC1034/1035)
- DHCP server, client and relay (RFC2131/2132)
- Bridging
- IEEE 802.1D transparent learning bridge
- IEEE 802.1q VLAN
- Port-based VLAN (4-port router)



## Security

- DMZ host/Multi-DMZ/Multi-NAT function
- Virtual server mapping (RFC1631)
- VPN pass-through for PPTP/L2TP/IPSec tunneling
- Natural NAT firewall
- Advanced Stateful packet inspection (SPI) firewall (Firewall Router)
- Application level gateway for URL and keyword blocking (Firewall Router)
- User access control: deny certain PCs access to Internet service (Firewall Router)

## Management

- Easy-to-use web-based GUI for quick setup, configuration and management
- Menu-driven interface/Command-line interface (CLI) for local console and Telnet access
- Password protected management and access control list for administration
- SNMP management with SNMPv1/SNMPv2 (RFC1157/1901/1905) agent and MIB II (RFC1213/1493)
- Software upgrade via web-browser/TFTP server

## ATM

- Up to 8 PVCs
- OAM F5 AIS/RDI and loopback
- AAL5

## ATM QoS

- UBR (Unspecified bit rate)
- CBR (Constant bit rate)
- VBR-rt (Variable bit rate real-time)
- VBR-nrt (Variable bit rate non-real-time)

## AAL5 Encapsulation

- VC multiplexing and SNAP/LLC
- Ethernet over ATM (RFC 2684/1483)
- PPP over ATM (RFC 2364)
- Classical IP over ATM (RFC 1577)

## PPP

- PPP over Ethernet for fixed and dynamic IP (RFC 2516)
- PPP over ATM for fixed and dynamic IP (RFC 2364)
- User authentication with PAP/CHAP/MS-CHAP

## WAN Interface

- SHDSL: ITU-T G.991.2 (Annex A, Annex B)
- Encoding scheme: 16-TCPAM
- Data Rate: N x 64Kbps (N=0~36, 0 for adaptive)
- Impedance: 135 ohms

## LAN Interface

- 10/100 Base-T auto-sensing and auto-negotiation

## Hardware Interface

- WAN: RJ-11
- LAN: RJ-45 x 1
- Console: RS232 female
- RST: Reset button for factory default

**Indicators**

- General: PWR
- WAN: LNK, ACT
- LAN: 10M/ACT, 100M/ACT
- SHDSL: ALM

**Physical/Electrical**

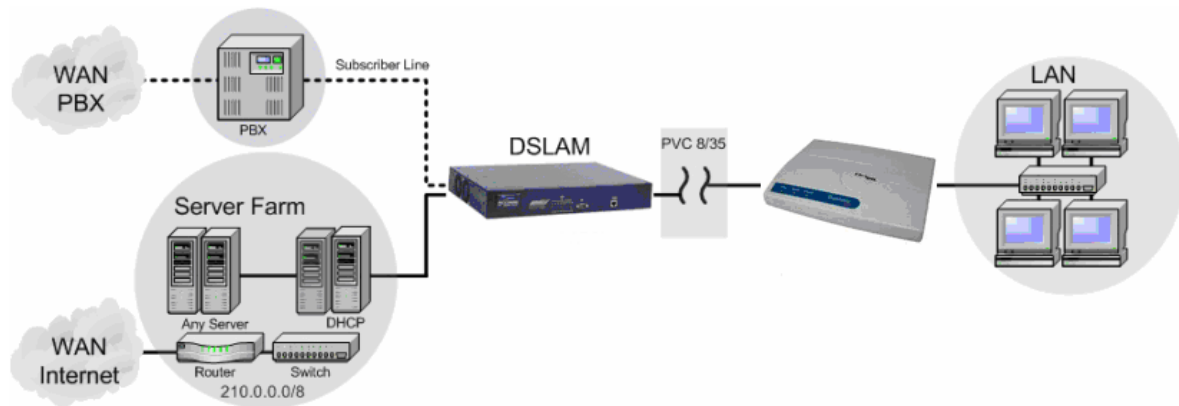
- Dimensions: 18.7 x 3.3 x 14.5cm (WxHxD)
- Power: 100~240VAC (via power adapter)
- Power consumption: 9 watts max
- Temperature: 0~45 C
- Humidity: 0%~95%RH (non-condensing)

**Memory**

- 2MB Flash Memory, 8MB SDRAM

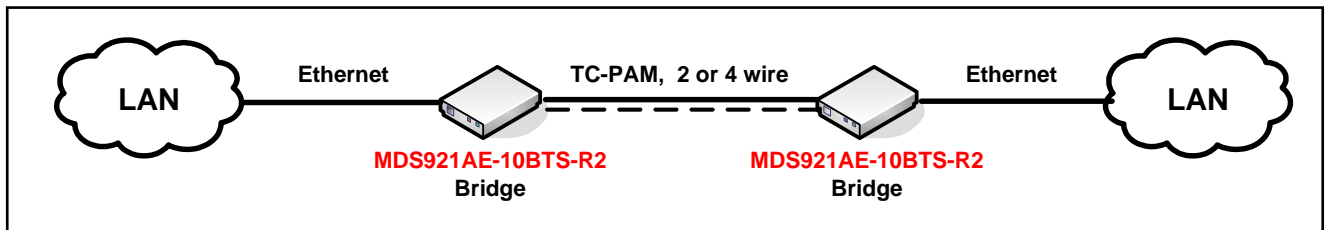
# Applications

## Application with DSLAM

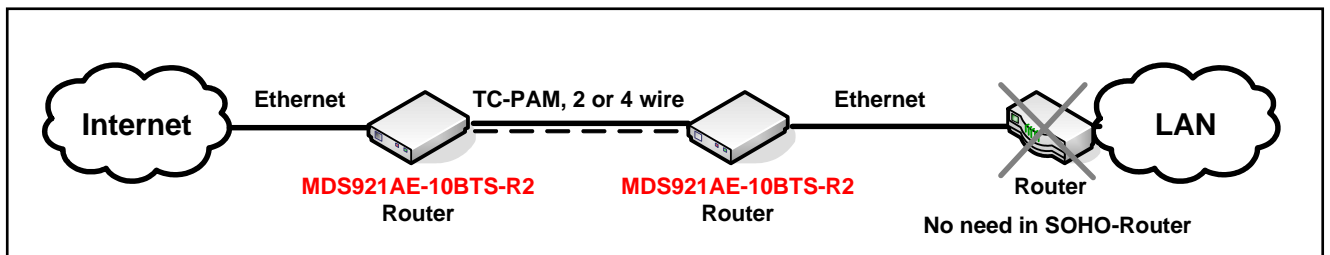


## Point-to-Point Application

*LAN-to-LAN interconnection*



*Easy and cost-effective Internet Access*



## Your Firewall

A firewall protects networked computers from intentional hostile intrusion that could compromise confidentiality or result in data corruption or denial of service. It must have at least two network interfaces, one for the network it is intended to protect, and one for the network it is exposed to. A firewall sits at the junction point or gateway between the two networks, usually a private network and a public network such as the Internet.

A firewall examines all traffic routed between the two networks to see if it meets certain criteria. If it does, it is routed between the networks, otherwise it is stopped. A firewall filters both inbound and outbound traffic. It can also manage public access to private networked resources such as host applications. It can be used to log all attempts to enter the private network and trigger alarms when hostile or unauthorized entry is attempted. Firewalls can filter packets based on their source and destination addresses and port numbers. This is known as address filtering. Firewalls can also filter specific types of network traffic. This is also known as protocol filtering because the decision to forward or reject traffic is dependant upon the protocol used, for example HTTP, ftp or telnet. Firewalls can also filter traffic by packet attribute or state.

An Internet firewall cannot prevent individual users with modems from dialing into or out of the network. By doing so they bypass the firewall altogether. Employee misconduct or carelessness cannot be controlled by firewalls. Policies involving the use and misuse of passwords and user accounts must be strictly enforced. These are management issues that should be raised during the planning of any security policy, but that cannot be solved with Internet firewalls alone.

## Types of Firewall

There are three types of firewall:

### Packet Filtering

In packet filtering, only the protocol and the address information of each packet is examined. Its contents and context (its relation to other packets and to the intended application) are ignored. The firewall pays no attention to applications on the host or local network and it "knows" nothing about the sources of incoming data. Filtering consists of examining incoming or outgoing packets and allowing or disallowing their transmission or acceptance on the basis of a set of configurable rules. Network Address Translation (NAT) routers offer the advantages of packet filtering firewalls but can also hide the IP addresses of computers behind the firewall, and offer a level of circuit-based filtering.

### Circuit Gateway

Also called a "Circuit Level Gateway," this is a firewall approach that validates connections before allowing data to be exchanged. What this means is that the firewall doesn't simply allow or disallow packets but also determines whether the connection between both ends is valid according to configurable rules, then opens a session and permits traffic only from the allowed source and possibly only for a limited period of time.

### Application Gateway

The Application Level Gateway acts as a proxy for applications, performing all data exchanges with the remote system in their behalf. This can render a computer behind the firewall all but invisible to the remote system. It can allow or disallow traffic according to very specific rules, for instance permitting some commands to a server but not others, limiting file access to certain types, varying rules according to authenticated users and so forth. This type of firewall may also perform very detailed logging of traffic and monitoring of events on the host system, and can often be instructed to sound alarms or notify an operator under defined conditions. Application-level gateways are generally regarded as the most secure type of firewall. They certainly have the most sophisticated capabilities.

## Denial of Service Attack

Denial of service (DoS) attacks typically come in two flavors: resource starvation and resource overload. DoS attacks can occur when there is a legitimate demand for a resource that is greater than the supply (i.e. too many web requests to an already overloaded web server). Software vulnerabilities or system miss configurations can also cause DoS situations. The difference between a malicious denial of service and simple system overload is the requirement of an individual with malicious intent (attacker) using or attempting to use resources specifically to deny those resources to other users.

**Ping of death-** On the Internet, ping of death is a kind of denial of service (DoS) attack caused by an attacker deliberately sending an IP packet larger than the 65,536 bytes allowed by the IP protocol. One of the features of TCP/IP is fragmentation; it allows a single IP packet to be broken down into smaller segments. Attackers began to take advantage of that feature when they found that a packet broken down into fragments could add up to more than the allowed 65,536 bytes. Many operating systems didn't know what to do when they received an oversized packet, so they froze, crashed, or rebooted. Other known variants of the ping of death include teardrop, bonk and nestea.

**SYN Flood-** The attacker sends TCP SYN packet which start connections very fast, leaving the victim waiting to complete a huge number of connections, causing it to run out of resources and dropping legitimate connections. A new defense against this is the "SYN cookies". Each side of a connection has its own sequence number. In response to a SYN, the attacked machine creates a special sequence number that is a "cookie" of the connection then forgets everything it knows about the connection. It can then recreate the forgotten information about the connection where the next packets come in from a legitimate connection.

**ICMP Flood-** The attacker transmits a volume of ICMP request packets to cause all CPU resources to be consumed serving the phony requests.

**UDP Flood-** The attacker transmits a volume of requests for UDP diagnostic services which cause all CPU resources to be consumed serving the phony requests.

**Land attack-** The attacker attempts to slow your network down by sending a packet with identical source and destination addresses originating from your network.

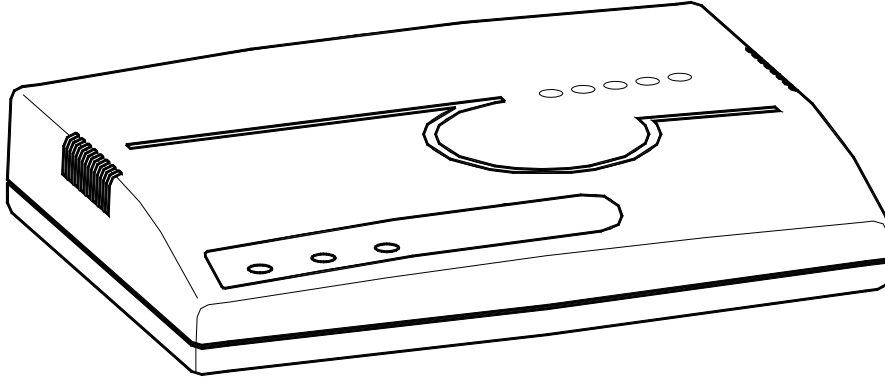
**Smurf attack-** Where the source address of a broadcast ping is forged so that a huge number of machines respond back to victim indicated by the address, overloading it.

**Fraggle Attack-** A perpetrator sends a large amount of UDP echo packets at IP broadcast addresses, all of it having a spoofed source address of a victim.

**IP Spoofing-** IP Spoofing is a method of masking the identity of an intrusion by making it appeared that the traffic came from a different computer. This is used by intruders to keep their anonymity and can be used in a Denial of Service attack.

## Getting to know about the router

This section will introduce the hardware of the router.



### Front Panel

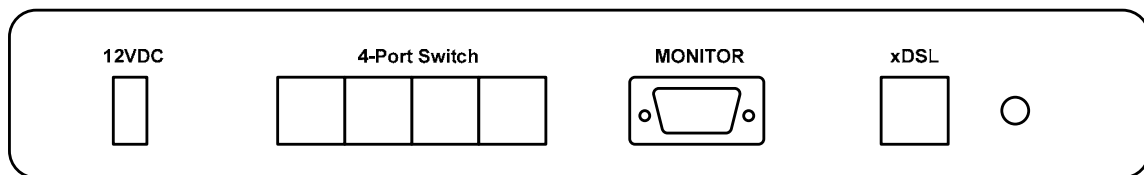
The front panel contains LED which show status of the router.



LEDs		Active	Description
LOCAL	Red	Blink	SHDSL self test
		Light	SHDSL line connection is dropped
	Yellow	Blink	SHDSL handshake
	Green	Light	SHDSL line connection is established
REMOTE	Green	Blink	Transmit or received data over SHDSL link
ACT/LINK	Yellow	On.	LAN port connect with 100M NIC
		Blink	LAN port acts in 10M
	Green	On	LAN port connect with 100M NIC
		Blink	LAN port acts in 100M

## Rear Panel

The rear panel of SHDSL router is where all of the connections are made.



**MDS921AE-10BTS-R2**

Connectors Description	
12V	Power adaptor inlet: Input voltage 12VDC
Switching HUB	4 Port Ethernet 10Base-T for LAN (RJ-45)
MONITOR	RS- 232C (DB9) for system configuration and maintenance
xDSL	G.SHDSL interface for WAN port (RJ-11) 2 or 4-wire
Button near xDSL	Reset Button

The reset button can be used only in one of two ways.

- When you want to change its configuration but you forget the user name or password, Press the Reset Button a while with a paper clip or sharp pencil. Pressing the Reset Button will cause the product loading the factory default setting and losing all of yours configuration.
- If the product is having problems connecting to the Internet and you want to configure it again clearing all configurations, press the Reset Button with a paper clip or sharp pencil. Pressing the Reset Button will cause the product loading the factory default setting and losing all of yours configuration.

## *Configuration to the router*

This guide is designed to lead users through Web Configuration of G.shdsl Router in the easiest and quickest way possible. Please follow the instructions carefully.

**Note:** There are three methods to configure the router: serial console, Telnet and Web Browser. Only one configuration application is used to setup the Router at any given time. Users have to choose one method to configure it.

For Web configuration, you can skip step 2.

For Serial Console Configuration, you can skip step 1 and 3.

**Step 1:** Check the Ethernet Adapter in PC or NB

Make sure that Ethernet Adapter had been installed in PC or NB used for configuration of the router. TCP/IP protocol is necessary for web configuration, so please check the TCP/IP protocol whether it has been installed.

**Step 2:** Check the Terminal Access Program

For Serial Console and Telnet Configuration, users need to setup the terminal access program with VT100 terminal emulation.

**Step 3:** Check the Web Browser in PC or NB

According to the Web Configuration, the PC or NB need to install Web Browser, IE or Netscape.

**Note:** Suggest to use IE5.0, Netscape 6.0 or above and 800x600 resolutions or above.

**Step 4:** Determine Connection Setting

Users need to know the Internet Protocol supplied by your Service Provider and determine the mode of setting.

Protocol Selection	
RFC1483	Ethernet over ATM
RFC1577	Classical Internet Protocol over ATM
RFC2364	Point-to-Point Protocol over ATM
RFC2516	Point-to-Point Protocol over Ethernet

The different protocols are needed to setup the difference WAN parameters. After knowing the protocol provided by your ISP, you have to setup the right protocol.

**Step 5:** Install the SHDSL Router

To avoid possible damage to this Router, do not turn on the router before Hardware Installation.

- Connect the power adapter to the port labeled DC-IN on the rear panel of the product.
- Connect the Ethernet cable.

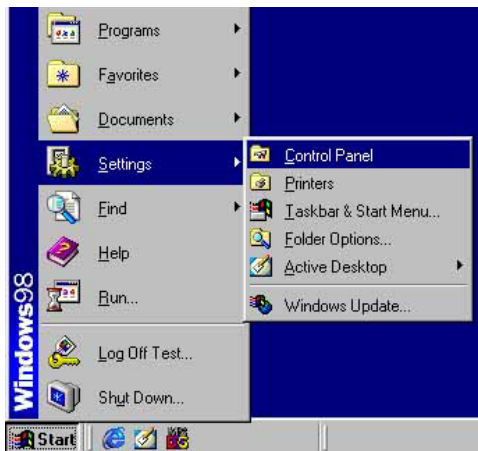
**Note:** If the router is directly connected to PC or NB, the Ethernet cable has to be used cross over one. If the router is connected to hub or switch, be sure that the hub or switch supporting auto-sensing. If yes, both cross over and none cross over Ethernet cable are suitable. If not, only pass through Ethernet cable could be used.

- Connect the DSL-cable to the product and the other side of DSL-cable to wall jack.
- Connect the power adapter to power source.
- Turn on the PC or NB which is used for configuration the Router.



## Configuration via Web Browser

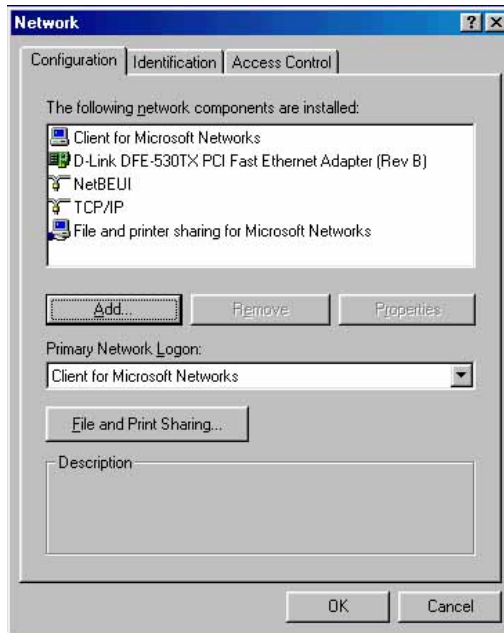
For Win95, 98 and ME, click the **start** button. Select **setting** and **control panel**.



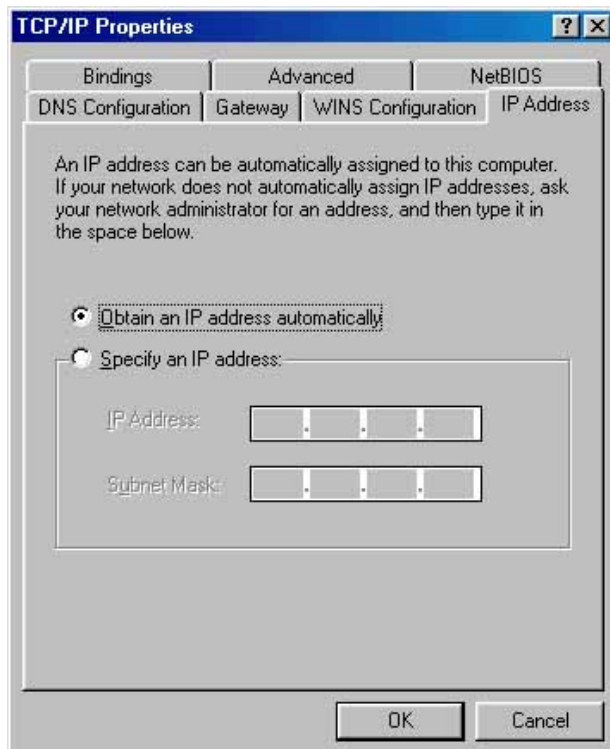
Double click the **network** icon.



In the Configuration window, select the **TCP/IP** protocol line that has been associated with your network card and then click **property** icon.

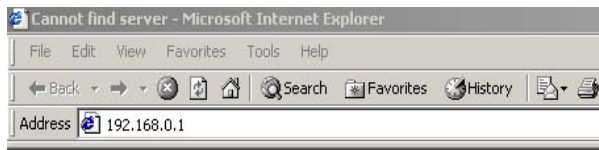


Choose IP address tab. Select **Obtain IP address automatically**. Click **OK** button.



The window will ask you to restart the PC. Click **Yes** button.

After rebooting your PC, open IE or Netscape Browser to connect the Router. Type <http://192.168.0.1>



The default IP address and sub net-mask of the Router is 192.168.0.1 and 255.255.255.0. Because the router acts as DHCP server in your network, the router will automatically assign IP address for PC or NB in the network.

Type User Name **root** and Password **root** and then click **OK**. The default user name and password are both *root*. For the system security, suggest to change them after configuration.



**Note:** After changing the User Name and Password, strongly recommend to save them on your PC.

## Basic Setup

The Basic Setup contains LAN, WAN, Bridge and Route operation mode. User can use it to completely setup the router. After successfully completing it, you can access Internet. This is the easiest and possible way to setup the router.

**Note:** The advanced functions should be used from qualified users only. The incorrect setting of advanced function will affect the system performance or even create errors.

Click **Basic** for basic installation.

## Bridge Mode

Before configuration the router in bridge mode check with your ISP about these information.

VPI:

VCI:

Encapsulation:

Gateway:

Host Name:            (if applicable)

Click **Bridge** and **CPE** Side to setup Bridging mode of the Router and then click Next for the next setting.

The screenshot shows the 'BASIC - STEP1' configuration screen. Under 'Operation Mode:', the 'System Mode' is set to 'BRIDGE' and the 'SHDSL Mode' is set to 'CPE Side'. The 'Next' button is highlighted, indicating the user should proceed to the next step.

This product can be setup two SHDSL mode: CO, Central Office, and CPE, Customer Premises Equipment. For connection with DSLAM, the SHDSL mode is CPE. For LAN to LAN connection, one side must be Co and the other side must be CPE.

### LAN Parameters

Enter IP: 192.168.0.1

Enter Subnet Mask: 255.255.255.0

Enter Gateway: 192.168.0.254

The Gateway IP is provided by ISP.

Enter Host Name: SOHO

Some of the ISP requires the host name as identification. You may check with ISP to see if your Internet service has been configured with a host name. In most cases, this field can be ignored.

### WAN1 Parameters

Enter VPI: 0

Enter VCI: 32

Click **LLC**

Click **Next**.

**BASIC - STEP2**

**LAN:**

IP Address:  .  .  .

Subnet Mask:  .  .  .

Gateway:  .  .  .

Host Name:

**WAN1:**

VPI:

VCI:

Encap.:  VC-mux  LLC

Back Cancel Reset Next

The screen will prompt the new configured parameters. Check the parameters and Click **Restart** The router will reboot with the new setting or **Continue** to configure another parameters.

**BASIC - REVIEW**

**REVIEW:**

To let the configuration that you have changed take effect immediately, please click Restart butt setup procedure, please click Continue button.

■ **System Operation Mode:**

System Mode	Bridge Mode
SHDSL Mode	CPE Side

■ **LAN Interface:**

IP Type	Fixed
IP Address	192.168.0.1
Subnet Mask	255.255.255.0
Gateway	192.168.0.254
Hostname	SOHO

■ **WAN1 interface:**

VPI	0
VCI	32
AAL5 Encap.	LLC

Continue Restart

## Routing Mode

Routing mode contains DHCP server, DHCP client, DHCP relay, Point-to-Point Protocol over ATM and Ethernet and IP over ATM and Ethernet over ATM. You have to clarify which Internet protocol is provided by ISP.

Click **ROUTE** and **CPE Side** then press **Next**.

This product can be setup two SHDSL mode: CO, Central Office, and CPE, Customer Premises Equipment. For connection with DSLAM, the SHDSL mode is CPE. For LAN to LAN connection, one side must be Co and the other side must be CPE.

**BASIC - STEP1**

**Operation Mode:**

**System Mode:**  ROUTE  BRIDGE

**SHDSL Mode:**  CO Side  CPE Side

## DHCP Server

Dynamic Host Configuration Protocol (DHCP) is a communication protocol that lets network administrators to manage centrally and automate the assignment of Internet Protocol (IP) addresses in an organization's network. Using the Internet Protocol, each machine that can connect to the Internet needs a unique IP address. When an organization sets up its computer users with a connection to the Internet, an IP address must be assigned to each machine that can be connected.

Without DHCP, the IP address must be entered manually at each computer. If computers move to another location in another part of the network, a new IP address must be entered. DHCP lets a network administrator to supervise and distribute IP addresses from a central point and automatically sends a new IP address when a computer is plugged into a different place in the network. If the DHCP server is Enable, you have to setup the following parameters for processing it as DHCP server.

The embedded DHCP server assigns network configuration information at most 253 users accessing the Internet in the same time.

IP type: **Fixed**  
 IP Address: 192.168.0.1  
 Subnet Mask: 255.255.255.0  
 Host Name: SOHO

Some of the ISP requires the host name as identification. You may check with ISP to see if your Internet service has been configured with a host name. In most cases, this field can be ignored.

Trigger DHCP Service: **Server**

The default setup is Enable DHCP server. If you want to turn off the DHCP service, choose Disable.

Home Basic **Advanced** Status Admin Utility

### BASIC - STEP2

**LAN:**

IP Type:  Fixed  Dynamic(DHCP Client)

IP Address:  .  .  .

Subnet Mask:  .  .  .

Host Name:

Trigger DHCP Service:  Disable  Server  Relay

---

For example: If the LAN IP address is 192.168.0.1, the IP range of LAN is 192.168.0.2 to 192.168.0.51. The DHCP server assigns the IP form Start IP Address to End IP Address. The legal IP address range is form 0 to 255, but 0 and 255 are reserved for broadcast so the legal IP address range is from 1 to 254. On the other hand, you cannot assign an IP greater than 254 or less then 1. Lease time 72 hours indicates that the DHCP server will reassign IP information in every 72 hours.

Home Basic **Advanced** Status Admin Utility

### BASIC - STEP3

**DHCP SERVER:**

- **General DHCP Parameter:**

Start IP Address: 10.0.81.

End IP Address: 10.0.81.

DNS Server 1:

DNS Server 2:

DNS Server 3:

Lease Time:  hours
- **Table of Fixed DHCP Host Entries:**

Hint: The format of the MAC Address is 12:34:56:78:9A:BC

Index	MAC Address	IP Address
1	<input type="text"/>	<input type="text"/>
2	<input type="text"/>	<input type="text"/>
3	<input type="text"/>	<input type="text"/>
4	<input type="text"/>	<input type="text"/>

DNS Server: Your ISP will provide at least one Domain Name Service Server IP. You can type the router IP in this field. The router will act as DNS server relay function.

You may assign fixed IP addresses to some devices while using DHCP, provided that the fixed IP address are not within the range used by the DHCP server.

Press **Next** to setup WAN1 parameters.

### DHCP Client

Some of the ISP provides DHCP server service by which the PC in LAN can access IP information automatically. To setup the DHCP client mode, follow the procedure.

LAN IP Type: **Dynamic**

Click **Next** to setup WAN1 parameters.

### DHCP relay

If you have a DHCP server in LAN and you want to use it for DHCP services, the product provides DHCP relay function to meet your needs.

IP Type: **Fixed**

IP Address: 192.168.0.1

Subnet Mask: 255.255.255.0

Host Name: SOHO

Some of the ISP requires the host name as identification. You may check with ISP to see if your Internet service has been configured with a host name. In most cases, this field can be ignored.

Trigger DHCP Service: **Relay**

Press **Next** to setup DHCP server parameter.



Home Basic **Advanced** Status Admin Utility

**BASIC - STEP2**

LAN:

IP Type:  Fixed  Dynamic(DHCP Client)

IP Address:  .  .  .

Subnet Mask:  .  .  .

Host Name:

Trigger DHCP Service:  Disable  Server  Relay

---

**Back** **Cancel** **Reset** **Next**

Enter DHCP server IP address in IP address field.

Press **Next**

Home Basic **Advanced** Status Admin Utility

**BASIC - STEP3**

DHCP RELAY:

- Remote DHCP Server Parameter:  
IP address:

---

**Back** **Cancel** **Reset** **Next**

## PPPoE or PPPoA

PPPoA (point-to-point protocol over ATM) and PPPoE (point-to-point protocol over Ethernet) are authentication and connection protocols used by many service providers for broadband Internet access. These are specifications for connecting multiple computer users on an Ethernet local area network to a remote site through common customer premises equipment, which is the telephone company's term for a modem and similar devices. PPPoE and PPPoA can be used to office or building. Users share a common Digital Subscriber Line (DSL), cable modem, or wireless connection to the Internet. PPPoE and PPPoA combine the Point-to-Point Protocol (PPP), commonly used in dialup connections, with the Ethernet protocol or ATM protocol, which supports multiple users in a local area network. The PPP protocol information is encapsulated within an Ethernet frame or ATM frame.

Before you configure the router, check the information below with your ISP.

VPI:

VCI:

Encapsulation:

User Name:

Password:

DNS Server:

Host Name:            (if applicable)

IP address:            (if applicable)

Key in the WAN1 parameters:

VPI: 0

VCI: 32

AAL5 Encap:  LLC

Protocol:  PPPoA + NAT or  PPPoE + NAT

Click  to setup User name and password.

The screenshot shows the router's configuration interface. At the top, there are navigation tabs: Home, Basic, Advanced, Status, Admin, and Utility. The current page is titled "BASIC - STEP4". Under the "WAN1:" section, there are several configuration options:

- VPI:
- VCI:
- AAL5 Encap:  VC-mux  LLC
- Protocol:  (dropdown menu is open showing options: IPoA, IPoA+NAT, EoA, EoA+NAT, PPPoA+NAT, PPPoE+NAT)

At the bottom of the configuration area, there are three buttons: "Cancel", "Reset", and "Next".

For more understanding about NAT, review NAT/DMZ.

Type the ISP1 parameters.

Username: test

Password: test

Password Confirm: test

Your ISP will provide the user name and password.

Home Basic Advanced Status Admin Utility

**BASIC - STEP5**

ISP1:

Username: test

Password: \*\*\*\*

Password Confirm: \*\*\*\*

Idle Time: 10 minutes

IP Type: Dynamic

IP Address: 10.0.81.1

Back Cancel Reset Next

Idle Time: 10

You want your Internet connection to remain on at all time, enter 0 in the Idle Time field.

There are two IP types, Dynamic and Static, which you can setup. The default IP type is Dynamic. It means that ISP PPP server will provide IP information including dynamic IP address when SHDSL connection is established. On the other hand, you do not need to type the IP address of WAN1. Some of the ISP will provide fixed IP address over PPP. For fixed IP address:

IP Type: Fixed

IP Address: 192.168.1.1

Click Next.

Note: For your safety, the password will prompt a star symbol.

The screen will prompt the parameters that will be written in EPROM. Check the parameters before writing in EPROM.

Press Restart to restart the router working with new parameters or press continue to setup another parameter.

## IPoA or EoA

Before you configure the router, check the information below with your ISP.

VPI:  
 VCI:  
 Encapsulation:  
 IP Address:  
 Subnet Mask:  
 Gateway:  
 DNS Server:  
 Host Name:            (if applicable)

Type the Wan Parameters;

VPI: 0  
 VCI: 33  
 AAL5 Encap:  LLC  
 Protocol:  IPoA ,  EoA ,  IPoA + NAT or  EoA + NAT

Click  to setup the IP parameters.

For more understanding about NAT, review NAT/DMZ.

IP Address: 10.1.2.1

It is router IP address seen from Internet. Your ISP will provide it and you need to specify here.

Subnet mask: 255.255.255.0

This is the router subnet mask seen by external users on Internet. Your ISP will provide it to you.

Gateway: 10.1.2.2

Your ISP will provide you the default gateway.

DNS Server 1: 168.95.1.1

Your ISP will provide at least one DNS (Domain Name System) Server IP address.

Click

Home Basic **Advanced** Status Admin Utility

**BASIC - STEP5**

**WAN1:**

IP Address:  .  .  .

Subnet Mask:  .  .  .

Gateway:  .  .  .

DNS Server 1:

DNS Server 2:

DNS Server 3:

**Back** **Cancel** **Reset** **Next**

The screen will prompt the parameters that will be written in EPROM. Check the parameters before writing in EPROM.

**BASIC - REVIEW****REVIEW:**

To let the configuration that you have changed take effect immediately, please click Restart but click Continue button.

- **System Operation Mode:**

System Mode	Route Mode
SHDSL Mode	CPE Side

- **LAN Interface:**

IP Type	Fixed
IP Address	10.0.81.1
Subnet Mask	255.0.0.0
Hostname	SOHO
Trigger DHCP service	DHCP Relay

- **DHCP relay:**

DHCP Server IP address	192.168.0.124
------------------------	---------------

- **WAN1 interface:**

VPI	0
VCI	32
AAL5 Encap.	LLC
Protocol	IPoA
WAN1 IP address	10.0.81.1
WAN1 subnet mask	255.0.0.0
Gateway	10.1.2.2
DNS Server 1	168.95.1.1
DNS Server 2	168.95.192.1
DNS Server 3	

Press Restart to restart the router working with new parameters or press continue to setup another parameter.

## Advanced Setup

### ▶ BASIC

### ▼ ADVANCED

- SHDSL
- WAN
- BRIDGE
- ROUTE
- NAT/DMZ
- VIRTUAL SERVER

### ▶ STATUS

### ▶ ADMIN

### ▶ UTILITY

Advanced setup contains SHDSL, WAN, Bridge, Route, NAT/DMZ, Virtual server and firewall parameters.

## SHDSL

### ▶ BASIC

### ▼ ADVANCED

- SHDSL
- WAN
- BRIDGE
- ROUTE
- NAT/DMZ
- VIRTUAL SERVER

### ▶ STATUS

### ▶ ADMIN

### ▶ UTILITY

You can setup the Annex type, data rate and SNR margin for SHDSL parameters in SHDSL. Click [SHDSL](#)

Annex Type: There are two Annex types, Annex A (ANSI) and Annex B (ETSI), in SHDSL. Check with your ISP about it.

Data Rate: you can setup the SHDSL data rate in the multiple of 64kbps. For adaptive mode, you have to setup n=0. The router will adapt the data rate according to the line status.

SHDSL SNR margin: the margin range is from 0 to 10.

Home	Basic	Advanced	Status	Admin	Utility
<b>ADVANCED - SHDSL</b>					
<b>Operation Mode:</b>					
<ul style="list-style-type: none"> <li> <b>Setup Operation Mode:</b>            Annex Type:   <input type="radio"/> Annex A   <input checked="" type="radio"/> Annex B   <input type="radio"/> Annex AB            Data Rate(n*64kbps): <input type="text" value="0"/> (range:0~36, n=0 for adaptive mode)            SNR margin: <input type="text" value="0"/> (range:-10~10)         </li> </ul>					
<div style="display: flex; justify-content: space-around;"> <span>Cancel</span> <span>Reset</span> <span>Finish</span> </div>					

SNR margin is an index of line connection. You can see the actual SNR margin in STATUS SHDSL. The larger SNR margin, the better line connection.

If you set SNR margin in the field as 2, the SHDSL connection will drop and reconnect when the SNR margin is lower than 2. On the other hand, the device will reduce the line rate and reconnect for better line connection.

The screen will prompt the parameters that will be written in EPROM. Check the parameters before writing in EPROM.

Home	Basic	Advanced	Status	Admin	Utility						
<b>ADVANCED - SHDSL</b>											
<b>SHDSL Parameters Review:</b>											
<p>To let the configuration that you have changed take effect immediately, please click Restart button to reboot the system. To continue the setup procedure, please click Continue button.</p>											
<ul style="list-style-type: none"> <li> <b>SHDSL Mode:</b> <table border="1" style="width: 100%; border-collapse: collapse;"> <tr> <td style="background-color: #800000; color: white;">Annex Type</td> <td>Annex B</td> </tr> <tr> <td style="background-color: #800000; color: white;">Data Rate</td> <td>0 (adaptive mode)</td> </tr> <tr> <td style="background-color: #800000; color: white;">SNR margin</td> <td>0</td> </tr> </table> </li> </ul>						Annex Type	Annex B	Data Rate	0 (adaptive mode)	SNR margin	0
Annex Type	Annex B										
Data Rate	0 (adaptive mode)										
SNR margin	0										
<div style="display: flex; justify-content: space-around;"> <span>Continue</span> <span>Restart</span> </div>											

Press Restart to restart the router working with new parameters or press continue to setup another parameter.



## WAN

The SHDSL router supports up to 8 PVCs. WAN 1 was configured via BASIC except QoS. If you want to setup another PVCs, 2 to 7, the parameters are setup in WAN. On the other hand, you must apply two or more Internet Services with ISPs otherwise you do not need to setup WAN.

The WAN Number 1 will be the parameters setup in Basic Setup. If you want to setup another PVC, you can configure them in WAN 2 to WAN 8.

Enter the parameters.

If WAN protocol is PPPoA or PPPoE with dynamic IP, leave the default WAN IP address and Subnet Mask as default setting. The system will ignore the IP address and Subnet mask information but deleting or leaving blank the items will cause system error.

If the WAN protocol is IPoA or EoA, leave the ISP parameters as default setting. The system will ignore the information but deleting or leaving blank the items will cause system error.

QoS (Quality of Service): The Traffic Management Specification V4.0 defines ATM service catalogues that describe both the traffic transmitted by users onto a network as well as the Quality of Service that the network need to provide for that traffic.

UBR (Unspecified Bit Rate) is the simplest service provided by ATM networks. There is no guarantee of anything. It is a primary service used for transferring Internet traffic over the ATM network.

CBR (Constant Bit Rate) is used by connections that requires a static amount of bandwidth that is available during the connection life time. This bandwidth is characterized by Peak Cell Rate. Based on the PCR of the CBR traffic, specific cell slots are assigned for the VC in the schedule table. The ATM always sends a single cell during the CBR connection's assigned cell slot.

VBR-rt (Variable Bit Rate real-time) is intended for real-time applications, such as compressed voice over IP and video conferencing, that require tightly constrained delays and delay variation. VBR-rt is characterized by a peak cell rate (PCR), sustained cell rate (SCR), and maximum burst rate (MBR).

VBR-nrt (Variable Bit Rate non-real-time)

PCR (Peak Cell Rate) in kbps: The maximum rate at which you expect to transmit data, voice and video. Consider PCR and MBS as a means of reducing latency, not increasing bandwidth. The range of PCR is 64kbps to 2400kbps

SCR (Sustained Cell Rate): The sustained rate at which you expect to transmit data, voice and video. Consider SCR to be the true bandwidth of a VC and not the long-term average traffic rate. The range of SCR is 64kbps to 2400kbps.

MBS (Maximum Burst Size): The amount of time or the duration at which the router sends at PCR. The range of MBS is 1 cell to 255 cells.

Press **Finish** to finish setting.

Home	Basic	Advanced	Status	Admin	Utility
<b>ADVANCED - WAN</b>					
<b>WAN Interface Parameters:</b>					
■ <b>Table of Current WAN Interface Parameter:</b>					
No	WAN	VC	ISP		
1	Protocol: IP over ATM	VPI: 0	Username: test		
	IP Address: 10.0.81.1	VCI: 32	Password: ****		
	Subnet Mask: 255.0.0.0	AAL5 Encap: LLC	Password Confirm: ****		
		QoS Class: UBR	Idle Time: 10		
	QoS PCR: 2400	IP Type: Dynamic			
	QoS SCR: 2400				
	QoS MBS: 1				
2	Protocol: Disable	VPI: 0	Username: test		
	IP Address: 10.0.81.1	VCI: 33	Password: ****		
	Subnet Mask: 255.0.0.0	AAL5 Encap: LLC	Password Confirm: ****		
		QoS Class: UBR	Idle Time: 10		
	QoS PCR: 2400	IP Type: Dynamic			
	QoS SCR: 2400				
	QoS MBS: 1				
3	Protocol: Disable	VPI: 0	Username: test		
	IP Address: 10.0.81.1	VCI: 34	Password: ****		
	Subnet Mask: 255.0.0.0	AAL5 Encap: LLC	Password Confirm: ****		
		QoS Class: UBR	Idle Time: 10		
	QoS PCR: 2400	IP Type: Dynamic			
	QoS SCR: 2400				
	QoS MBS: 1				
4	Protocol: Disable	VPI: 0	Username: test		
	IP Address: 10.0.81.1	VCI: 35	Password: ****		
	Subnet Mask: 255.0.0.0	AAL5 Encap: LLC	Password Confirm: ****		
		QoS Class: UBR	Idle Time: 10		
	QoS PCR: 2400	IP Type: Dynamic			
	QoS SCR: 2400				
	QoS MBS: 1				

The screen will prompt the parameters that will be written in EPROM. Check the parameters before writing in EPROM.

Press Restart to restart the router working with new parameters or press continue to setup another parameter.

## Bridge

If your router is setup in bridge mode and you want to setup advanced filter function, you can use BRIDGE menu to setup the filter function, blocking function.

Click **Bridge** to setup.

Press **Add** to add the static bridge information.

If you want to filter the definite MAC address of LAN PC to access Internet, press **Add** to establish the filtering table. Key the MAC address in MAC address field and select Filter in LAN field.

If you want to filter the definite MAC address of WAN PC to access LAN, press **Add** to establish the filtering table. Key the MAC address in MAC address field and select Filter in WAN field. For example: if your VC is setup at WAN 1, select WAN 1 Filter.

**Home   Basic   Advanced   Status   Admin   Utility**

**ADVANCED - BRIDGE**

**Generic Bridge Parameters:**

- **General Parameter:**  
Default Gateway:

**Static Bridge Parameters:**

- **Table of Current MAC Entries:**

No	MAC Address	LAN	WAN1 - 4	WAN5 - 8
1	00:00:00:00:00:00	Filter	1. Filter	5. Filter
			2. Filter	6. Filter
			3. Filter	7. Filter
			4. Filter	8. Filter

---

The screen will prompt the parameters that will be written to the EPROM. Check the parameters before writing in EPROM.

Home	Basic	Advanced	Status	Admin	Utility
------	-------	----------	--------	-------	---------

### ADVANCED - BRIDGE

**Bridge Parameters Review:**

To let the configuration that you have changed take effect immediately, please click Restart button to reboot the system. To continue the setup procedure, please click Continue button.

- **Generic Bridge Parameter:**  

Default Gateway	192.168.0.254
-----------------	---------------
- **Static Bridge Parameter:**  

No	MAC Address	LAN	WAN1	WAN2	WAN3	WAN4	WAN5	WAN6	WAN7	WAN8
Pool is Empty !										

Press **Restart** to restart the router working with new parameters or press **continue** to setup another parameter.

## VLAN

Virtual LAN (VLAN) is defined as a group of devices on one or more LANs that are configured so that they can communicate as if they were attached to the same wire, when in fact they are located on a number of different LAN segments. Because VLAN is based on logical instead of physical connections, it is extremely flexible.

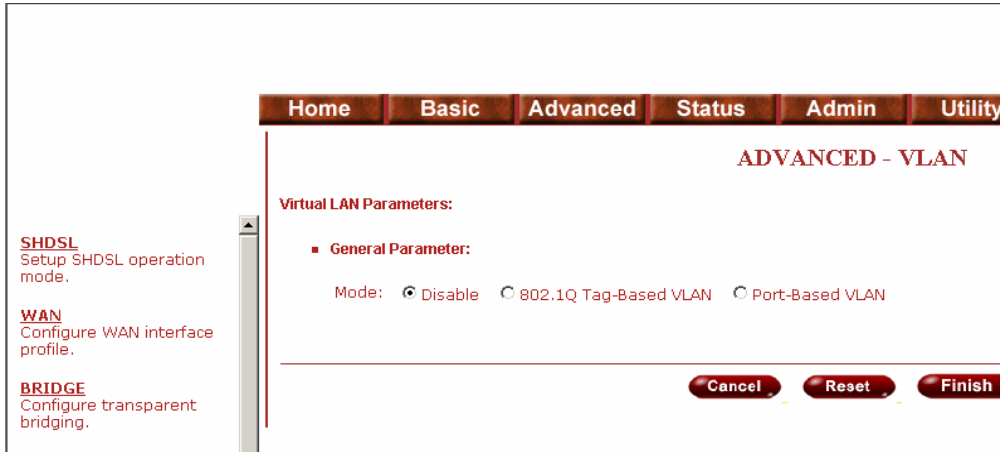
The IEEE 802.1Q defines the operation of VLAN bridges that permit the definition, operation, and administration of VLAN topologies within a bridged LAN infrastructure. VLAN architecture benefits include:

- Increased performance
- Improved manageability
- Network tuning and simplification of software configurations
- Physical topology independence
- Increased security options

The specification of VLAN function is as follow:

- The unit supports up to 8 active VLANs with shared VLAN learning (SVL) bridge out of 4096 possible VLANs specified in IEEE 802.1Q.
- Each port always belongs to a default VLAN with its port VID (PVID) as an untagged member. Also, a port can belong to multiple VLANs and be tagged members of these VLANs.
- A port must not be a tagged member of its default VLAN.
- If a non-tagged or null-VID tagged packet is received, it will be assigned with the default PVID of the ingress port.
- If the packet is tagged with non-null VID, the VID in the tag will be used.
- The look up process starts with VLAN look up to determine whether the VID is valid. If the VID is not valid, the packet will be dropped and its address will not be learned. If the VID is valid, the VID, destination address, and source address lookups are performed.
- The VID and destination address lookup determines the forwarding ports. If it fails, the packet will be broadcasted to all members of the VLAN, except the ingress port.
- Frames are sent out tagged or untagged depend on if the egress port is a tagged or untagged member of the VLAN that frames belong to.
- If VID and source address look up fails, the source address will be learned.

Click [VLAN](#) to configure VLAN.



The product support two types of VLAN, 802.1Q and Port-Based. User can configure one of them to the router.

For setting 802.1Q VLAN click the 802.1Q Tag-Based VLAN. The screen will prompt as follow.



VID: Virtual LAN ID. It is an definite number of ID which number is from 1 to 4094.

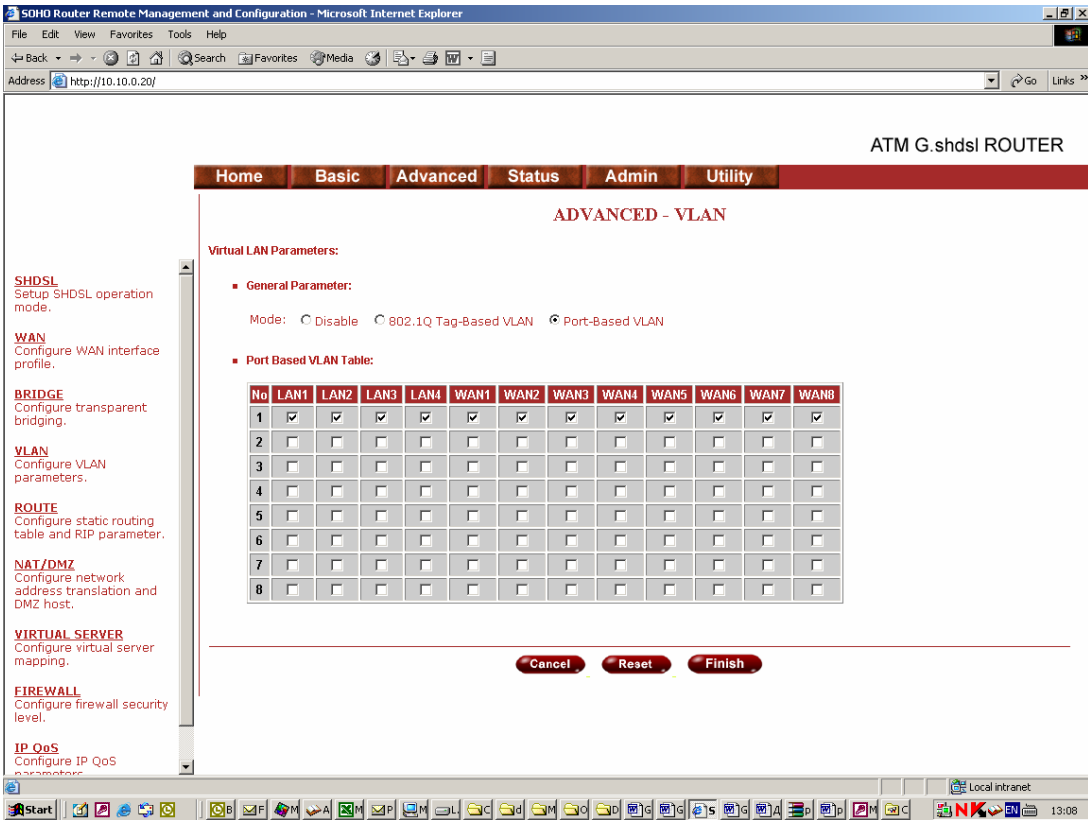
PVID: Port VID which is an untagged member of default VLAN.

Link Type: Access means the port can receive or send untagged packets.

Link Type: Trunk means that the port can receive or send tagged packets.

Link Type of the WAN is assigned automatically via which mode of the product is configured. If the product works in bridge mode, the Link type of WAN will be Trunk, tagged port, and you can assign any PVID to WAN except 0 and leaving blank.

When the product works under routing mode, the Link Type of WAN will be Access mode, un-tagged port.



Port-Based VLANs are VLANs where the packet forwarding decision is based on the destination MAC address and its associated port.

Click Port-Based VLAN to configure the router.

## Route

If the Router is connected to more than one network, it may be necessary to set up a static route between them. A static route is a pre-determined pathway that network information must travel to reach a specific host or network.

With Dynamic Routing, you can enable the Router to automatically adjust to physical changes in the network's layout. The Router, using the RIP protocol, determines the network packets' route based on the fewest number of hops between the source and the destination. The RIP protocol regularly broadcasts routing information to other routers on the network.

Click [Route](#) to modify the routing information.

Home
Basic
Advanced
Status
Admin
Utility

### ADVANCED - ROUTE

**Static Route and RIP Parameters:**

- **Table of Current Static Route Entries:**

Index	Network Address	Subnet Mask	Gateway
<input checked="" type="radio"/> 1	0.0.0.0	0.0.0.0	10.1.2.2
<input type="radio"/> 2	<input type="text"/>	<input type="text"/>	<input type="text"/>
- **General RIP Parameter:**

RIP Mode:  Disable  Enable

Auto RIP Summary:  Disable  Enable
- **Table of Current Interface RIP Parameter:**

Interface	RIP Mode	Version	Authentication Required	Poison Reverse	Authentication Code
<input checked="" type="radio"/> LAN	Disable	2	None	Enable	None
<input type="radio"/> WAN1	Disable	2	None	Enable	None
<input type="radio"/> WAN2	Disable	--	None	Disable	None
<input type="radio"/> WAN3	Disable	--	None	Disable	None
<input type="radio"/> WAN4	Disable	--	None	Disable	None
<input type="radio"/> WAN5	Disable	--	None	Disable	None
<input type="radio"/> WAN6	Disable	--	None	Disable	None

To modify the RIP (Routing information protocol) Parameters:

RIP Mode: [Enable](#)

Auto RIP Summary: [Enable](#)

Press [Modify](#)



## ADVANCED - ROUTE

## Static Route and RIP Parameters:

## ■ Table of Current Static Route Entries:

Index	Network Address	Subnet Mask	Gateway
<input checked="" type="radio"/> 1	0.0.0.0	0.0.0.0	10.1.2.2
2	<input type="text"/>	<input type="text"/>	<input type="text"/>
<input type="button" value="Reset"/> <input type="button" value="Delete"/> <input type="button" value="Modify"/> <input type="button" value="Add"/>			

## ■ General RIP Parameter:

RIP Mode:  Disable  Enable  
 Auto RIP Summary:  Disable  Enable

## ■ Table of Current Interface RIP Parameter:

Interface	RIP Mode	Version	Authentication Required	Poison Reverse	Authentication Code
<input checked="" type="radio"/> LAN	Disable	2	None	Enable	None
<input type="radio"/> WAN1	Disable	2	None	Enable	None
<input type="radio"/> WAN2	Disable	--	None	Disable	None
<input type="radio"/> WAN3	Disable	--	None	Disable	None
<input type="radio"/> WAN4	Disable	--	None	Disable	None
<input type="radio"/> WAN5	Disable	--	None	Disable	None
<input type="radio"/> WAN6	Disable	--	None	Disable	None

RIP Mode: this parameter determines how the product handle RIP (Routing information protocol). RIP allows it to exchange routing information with other router. If set to Disable, the gateway does not participate in any RIP exchange with other router. If set Enable, the router broadcasts the routing table of the router on the LAN and incorporates RIP broadcast by other routers into it's routing table. If set silent, the router does not broadcast the routing table, but it accepts RIP broadcast packets that it receives.

■ Table of Current Interface RIP Parameter:

Interface	RIP Mode	Version	Authentication Required	Poison Reverse	Authentication Code
LAN	Disable	2	None	Enable	
WAN1	Disable	2	None	Enable	None
WAN2	Disable	--	None	Disable	None
WAN3	Disable	--	None	Disable	None
WAN4	Disable	--	None	Disable	None
WAN5	Disable	--	None	Disable	None
WAN6	Disable	--	None	Disable	None
WAN7	Disable	--	None	Disable	None
WAN8	Disable	--	None	Disable	None

■ Table of Current Interface RIP Parameter:

Interface	RIP Mode	Version	Authentication Required	Poison Reverse	Authentication Code
LAN	Disable	2	None	Enable	
WAN1	Disable	1	None	Enable	None
WAN2	Disable	--	None	Disable	None
WAN3	Disable	--	None	Disable	None
WAN4	Disable	--	None	Disable	None
WAN5	Disable	--	None	Disable	None
WAN6	Disable	--	None	Disable	None
WAN7	Disable	--	None	Disable	None
WAN8	Disable	--	None	Disable	None

RIP Version: It determines the format and broadcasting method of any RIP transmissions by the gateway.

RIP v1: it only sends RIP v1 messages only.

RIP v2: it send RIP v2 messages in multicast and broadcast format.

■ **Table of Current Interface RIP Parameter:**

Interface	RIP Mode	Version	Authentication Required	Poison Reverse	Authentication Code
LAN	Disable	2	None	Enable	
WAN1	Disable	2	None	Enable	None
WAN2	Disable	--	None	Disable	None
WAN3	Disable	--	None	Disable	None
WAN4	Disable	--	None	Disable	None
WAN5	Disable	--	None	Disable	None
WAN6	Disable	--	None	Disable	None
WAN7	Disable	--	None	Disable	None
WAN8	Disable	--	None	Disable	None

Authentication required.

None: for RIP, there is no need of authentication code.

Password: the RIP is protected by password, authentication code.

MD5: The RIP will be decoded by MD5 than protected by password, authentication code.

■ **Table of Current Interface RIP Parameter:**

Interface	RIP Mode	Version	Authentication Required	Poison Reverse	Authentication Code
LAN	Disable	2	None	Enable	
WAN1	Disable	2	None	Disable	None
WAN2	Disable	--	None	Disable	None
WAN3	Disable	--	None	Disable	None
WAN4	Disable	--	None	Disable	None
WAN5	Disable	--	None	Disable	None
WAN6	Disable	--	None	Disable	None
WAN7	Disable	--	None	Disable	None
WAN8	Disable	--	None	Disable	None

Poison Reserve is for the purpose of promptly broadcast or multicast the RIP while the route is changed. (ex shutting down one of the routers in routing table)

Enable: the gateway will actively broadcast or multicast the information.

Disable: the gateway will not broadcast or multicast the information.

After modifying the RIP parameters, press **finish**.

The screen will prompt the modified parameter. Check the parameters and press **Restart** to restart the router or press **Continue** to setup another parameters.

## NAT/DMZ

NAT (Network Address Translation) is the translation of an Internet Protocol address (IP address) used within one network to a different IP address known within another network. One network is designated the inside network and the other is the outside. Typically, a company maps its local inside network addresses to one or more global outside IP addresses and reverse the global IP addresses of incoming packets back into local IP addresses. This ensure security since each outgoing or incoming request must go through a translation process, that also offers the opportunity to qualify or authenticate the request or match it to a previous request. NAT also conserves on the number of global IP addresses that a company needs and lets the company to use a single IP address of its communication in the Internet world.

DMZ (demilitarized zone) is a computer host or small network inserted as a “neutral zone” between a company private network and the outside public network. It prevents outside users from getting direct access to a server that has company private data.

In a typical DMZ configuration for an enterprise, a separate computer or host receives requests from users within the private network to access via Web sites or other companies accessible on the public network. The DMZ host then initiates sessions for these requests to the public network. However, the DMZ host is not able to initiate a session back into the private network. It can only forward packets that have already been requested.

Users of the public network outside the company can access only the DMZ host. The DMZ may typically also have the company’s Web pages so these could serve the outside world. However, the DMZ provides access to no other company data. In the event that an outside user penetrated the DMZ host’s security, the Web pages might be corrupted, but no other company information would be exposed.

Press NAT/DMZ to setup the parameters.

## ADVANCED - NAT/DMZ

## Network Address Translation and DMZ Hosts Parameters:

## ■ NAT/DMZ function:

NAT/DMZ Function:  Disable  Enable

## ■ DMZ Host:

DMZ Host Function:  Disable  EnableVirtual IP Address: Active Interface: 

## ■ Multi-DMZ:

ID	Virtual IP Address	Global IP Address	Interface
1	<input type="text"/>	<input type="text"/>	<input type="text" value="WAN1"/>
2	<input type="text"/>	<input type="text"/>	<input type="text" value="WAN1"/>
3	<input type="text"/>	<input type="text"/>	<input type="text" value="WAN1"/>
4	<input type="text"/>	<input type="text"/>	<input type="text" value="WAN1"/>
5	<input type="text"/>	<input type="text"/>	<input type="text" value="WAN1"/>
6	<input type="text"/>	<input type="text"/>	<input type="text" value="WAN1"/>
7	<input type="text"/>	<input type="text"/>	<input type="text" value="WAN1"/>
8	<input type="text"/>	<input type="text"/>	<input type="text" value="WAN1"/>
9	<input type="text"/>	<input type="text"/>	<input type="text" value="WAN1"/>

If you want to enable the NAT/DMZ functions, click Enable. Enable the DMZ host Function is used the IP address assigned to the WAN for enabling DMZ function for the virtual IP address.

Multi-DMZ: Some users who have two or more global IP addresses assigned by ISP can be used the multi DMZ. The table is for the mapping of global IP address and virtual IP address.

10   WAN1 ▾

■ Multi-NAT:

ID	Virtual Start IP Address	Count	Global Start IP Address	Count	Interface
1	<input type="text"/>	<input type="text"/>	<input type="text"/>	<input type="text"/>	WAN1 ▾
2	<input type="text"/>	<input type="text"/>	<input type="text"/>	<input type="text"/>	WAN1 ▾
3	<input type="text"/>	<input type="text"/>	<input type="text"/>	<input type="text"/>	WAN1 ▾
4	<input type="text"/>	<input type="text"/>	<input type="text"/>	<input type="text"/>	WAN1 ▾
5	<input type="text"/>	<input type="text"/>	<input type="text"/>	<input type="text"/>	WAN1 ▾

Multi-NAT: Some of the virtual IP addresses (eg: 192.168.0.10 ~ 192.168.0.50) collectively use two of the global IP addresses (eg: 69.210.1.9 and 69.210.1.10). The Multi-NAT table will be setup as;

Virtual Start IP Address: 192.168.0.10

Count: 40

Global Start IP Address: 69.210.1.9

Count: 2

Press **Finish** to continue.

The screen will prompt the parameters that will be written in EPROM. Check the parameters before writing in EPROM. Press **Restart** to restart the router working with new parameters or **Continue** to configure another parameter.

## Virtual Server

For example: Specific ports on the WAN interface are re-mapped to services inside the LAN. As only 69.210.1.8 (e.g., assigned to WAN from ISP) is visible to the Internet, but does not actually have any services (other than NAT of course) running on gateway, it is said to be a virtual server. Request with TCP made to 69.210.1.8:80 are remapped to the server 1 on 192.168.0.2:80 for working days from Monday to Friday 8 AM to 6PM, other requests with UDP made to 69.210.1.8:25 are remapped to server 2 on 192.168.0.3:25 and always on.

You can setup the router as Index 1, protocol TCP, interface WAN1, service name test1, private IP 192.168.0.2, private port 80, public port 80, schedule from Day Monday to Friday and time 8:0 to 16:0 and index 2, protocol UDP, interface WAN1, service name test2, private IP 192.168.0.3, private port 25, public port 25, schedule always.

Click [Virtual Server](#) to configure the parameters.

**ADVANCED - VIRTUAL SERVER**

Virtual Server Mapping Parameters:

■ Table of Current Virtual Server Entries:

Index	Service Name	Interface	Private IP	Protocol	Schedule
<input checked="" type="radio"/> 1	---	---	---	Disable	---
<input type="radio"/> 2	---	---	---	Disable	---
<input type="radio"/> 3	---	---	---	Disable	---
<input type="radio"/> 4	---	---	---	Disable	---
<input type="radio"/> 5	---	---	---	Disable	---
<input type="radio"/> 6	---	---	---	Disable	---
<input type="radio"/> 7	---	---	---	Disable	---
<input type="radio"/> 8	---	---	---	Disable	---
<input type="radio"/> 9	---	---	---	Disable	---
<input type="radio"/> 10	---	---	---	Disable	---

Press [Modify](#) for modify 1.

Home	Basic	Advanced	Status	Admin	Utility
------	-------	----------	--------	-------	---------

**ADVANCED - VIRTUAL SERVER**

**Virtual Server Mapping Parameters:**

- **Virtual Server 1:**
  - Protocol:
  - Interface:
  - Service Name:
  - Private IP:
  - Private Port:
  - Public Port:
  - Schedule:  Always
    - From Day  to 
      - Time  :  to  :

Type the necessary parameters then click **Finish**.

Press **Restart** to restart the router or press **continue** to setup another function.

## Firewall

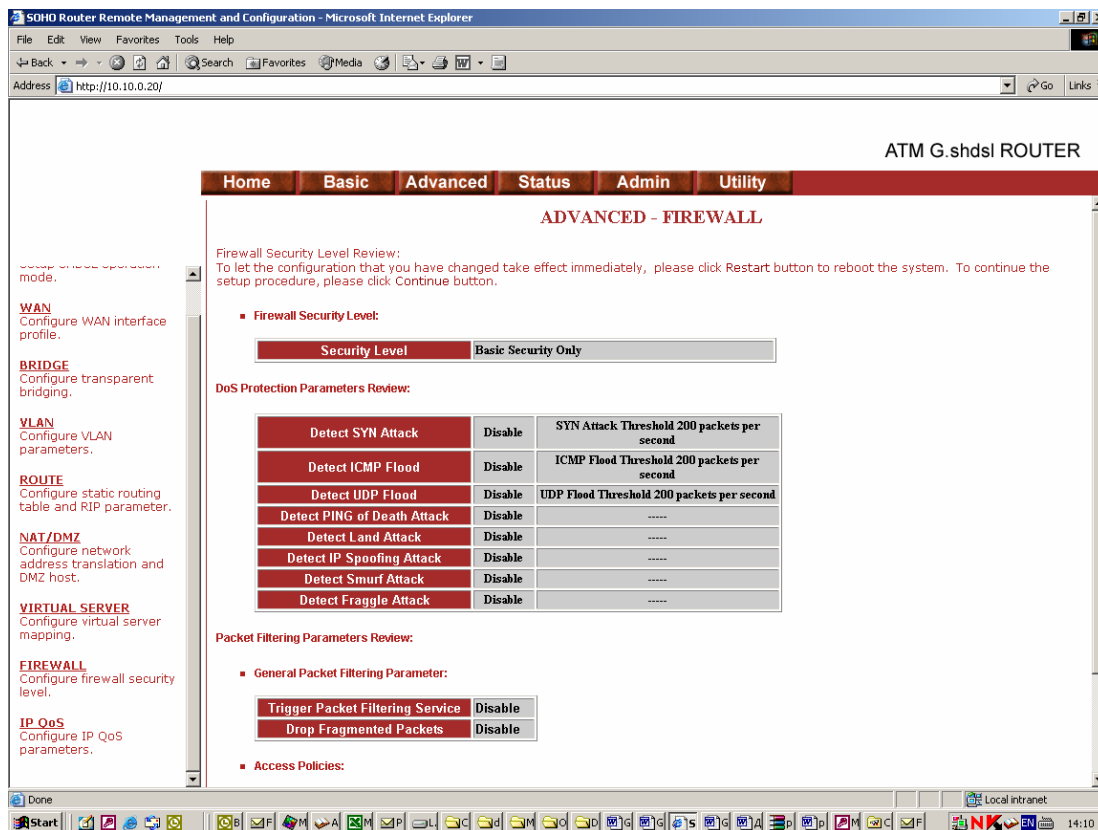
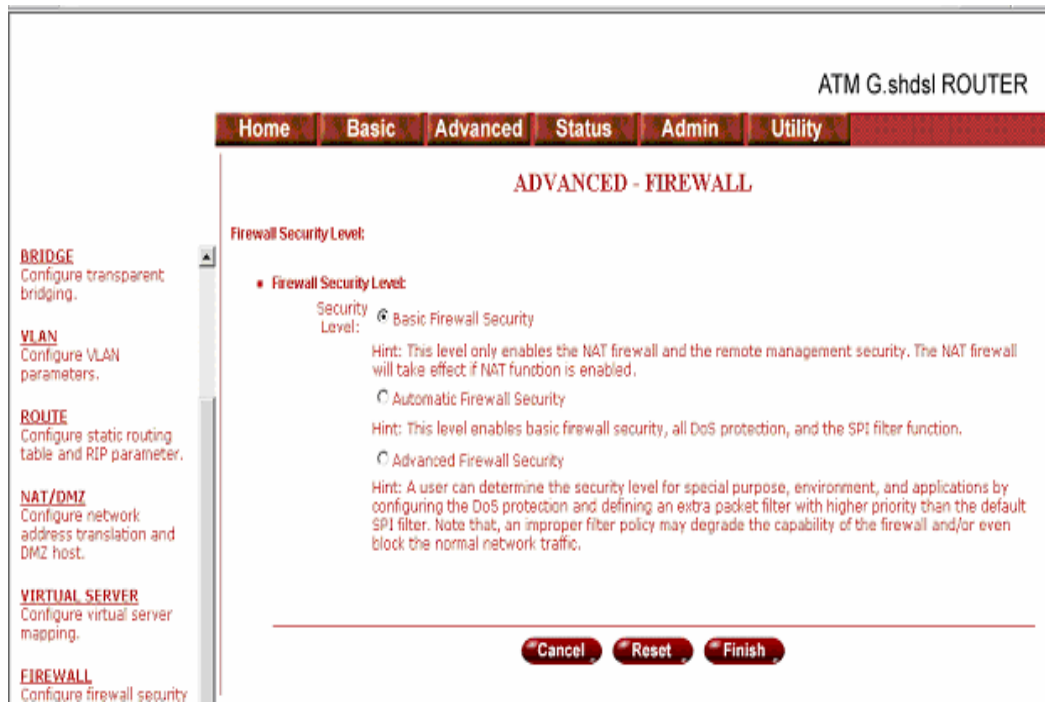
A firewall is a set of related programs that protects the resources of a private network from other networks. It is helpful to users that allow preventing hackers to access its own private data resource accidentally.

This level only enables the NAT firewall and the remote management security. The NAT firewall will take effect if NAT function is enabled. The remote management security is default to block any WAN side connection to the device. Non-empty legal IP pool in ADMIN will block all remote management connection except those IPs specified in the pool.

Press Finish to finish setting of firewall

The screen will prompt the parameters, which will be written in EPROM. Check the parameters.

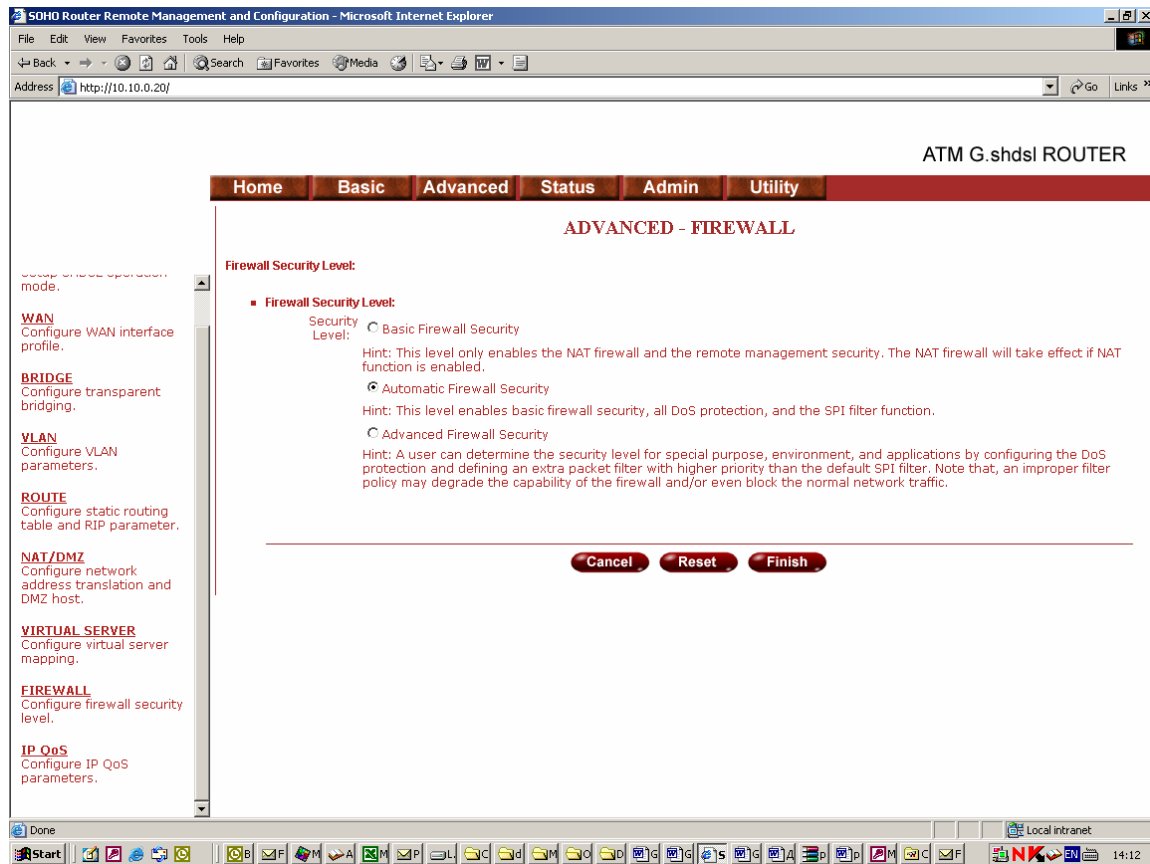




Press restart to restart the router or press continue to setup another function.

This level enables basic firewall security, all DoS protection, and the SPI filter function.

Press Finish to finish setting firewall.



The screen will prompt the parameters, which will be written in EPROM. Check the parameters.

SOHO Router Remote Management and Configuration - Microsoft Internet Explorer

Address http://10.10.0.20/

ATM G.shdsl ROUTER

Home Basic **Advanced** Status Admin Utility

Firewall Security Level Review:  
To let the configuration that you have changed take effect immediately, please click Restart button to reboot the system. To continue the setup procedure, please click Continue button.

- Firewall Security Level:
 

Security Level	Automatic Firewall Security
----------------	-----------------------------
- DoS Protection Parameters Review:
 

Detect SYN Attack	Enable	SYN Attack Threshold 200 packets per second
Detect ICMP Flood	Enable	ICMP Flood Threshold 200 packets per second
Detect UDP Flood	Enable	UDP Flood Threshold 200 packets per second
Detect PING of Death Attack	Enable	-----
Detect Land Attack	Enable	-----
Detect IP Spoofing Attack	Enable	-----
Detect Smurf Attack	Enable	-----
Detect Fraggle Attack	Enable	-----
- Packet Filtering Parameters Review:
  - General Packet Filtering Parameter:
 

Trigger Packet Filtering Service	Disable
Drop Fragmented Packets	Disable
  - Access Policies:
 

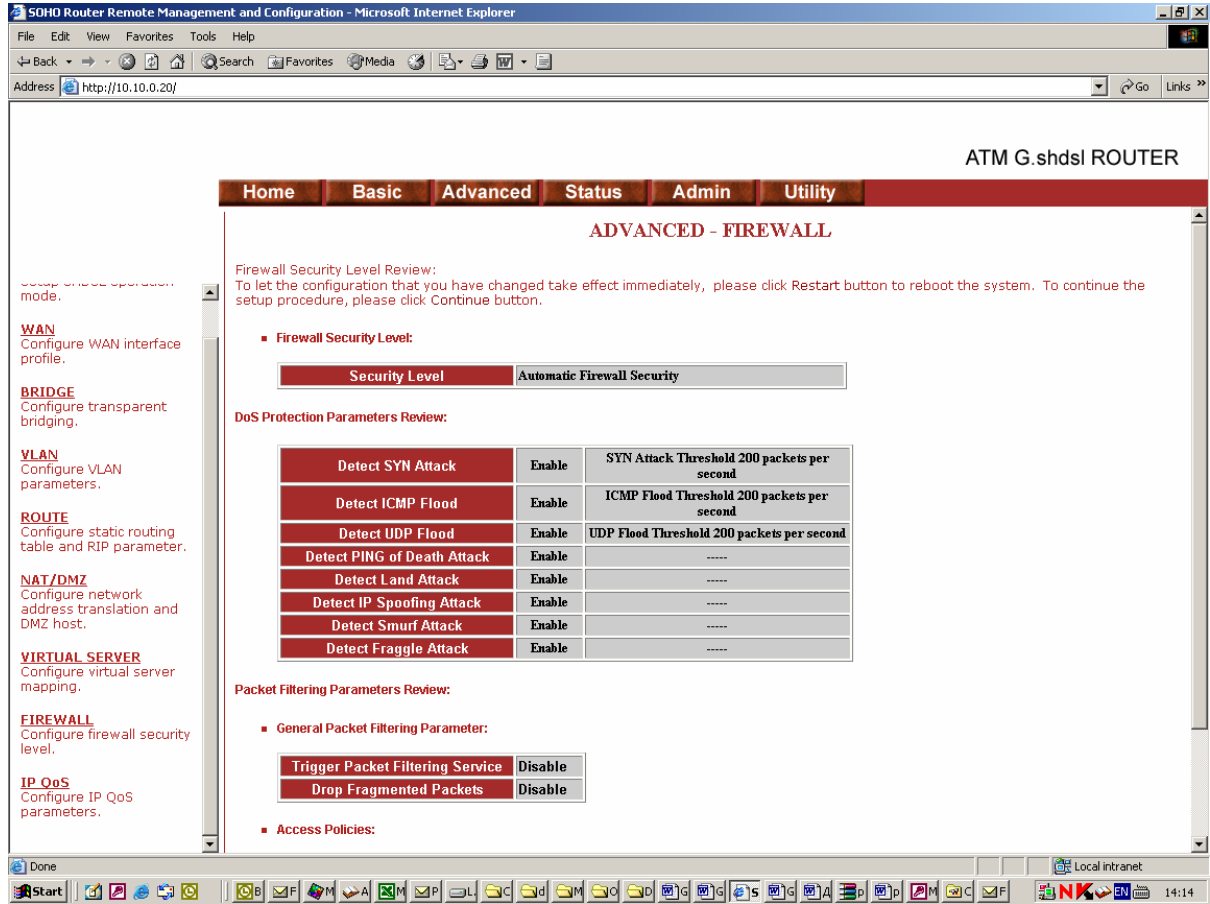
Index	Enable	Protocol	Direction	Action	Source	Destination	TCP Flag	ICMP Type	Schedule	Description
Pool is Empty !										

Done

Start

Local intranet 14:13

Press restart to restart the router or press Continue to setup another function.



User can determine the security level for special purpose, environment, and applications by configuring the DoS protection and defining an extra packet filter with higher priority than the default SPI filter. Note that, an improper filter policy may degrade the capability of the firewall and/or even block the normal network traffic.

SOHO Router Remote Management and Configuration - Microsoft Internet Explorer

Address http://10.10.0.20/

ATM G.shdsl ROUTER

Home Basic **Advanced** Status Admin Utility

### ADVANCED - FIREWALL

**Firewall Security Level:**

- **Firewall Security Level:**

Security Level:  Basic Firewall Security

Hint: This level only enables the NAT firewall and the remote management security. The NAT firewall will take effect if NAT function is enabled.

Automatic Firewall Security

Hint: This level enables basic firewall security, all DoS protection, and the SPI filter function.

Advanced Firewall Security

Hint: A user can determine the security level for special purpose, environment, and applications by configuring the DoS protection and defining an extra packet filter with higher priority than the default SPI filter. Note that, an improper filter policy may degrade the capability of the firewall and/or even block the normal network traffic.

**WAN**  
Configure WAN interface profile.

**BRIDGE**  
Configure transparent bridging.

**VLAN**  
Configure VLAN parameters.

**ROUTE**  
Configure static routing table and RIP parameter.

**NAT/DMZ**  
Configure network address translation and DMZ host.

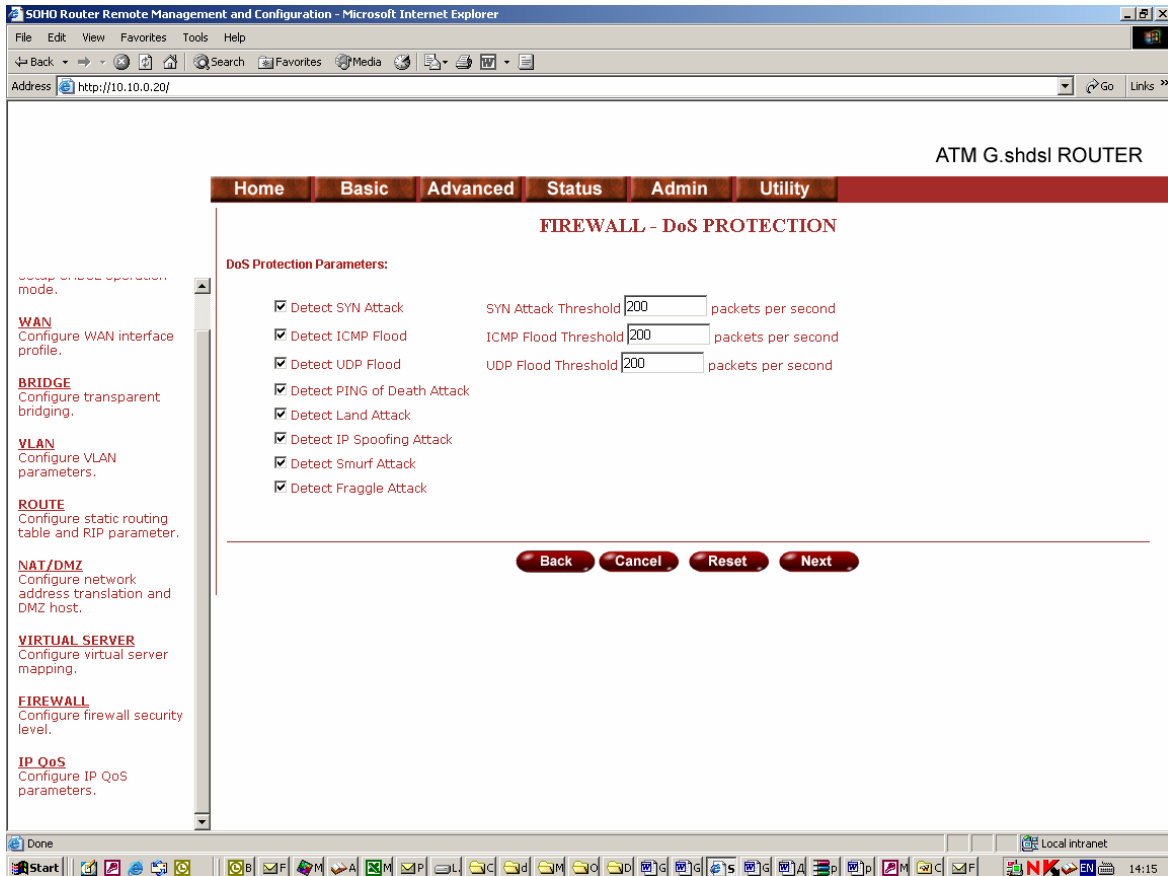
**VIRTUAL SERVER**  
Configure virtual server mapping.

**FIREWALL**  
Configure firewall security level.

**IP QoS**  
Configure IP QoS parameters.

Done

Local intranet 14:14



Click Advanced Firewall Security and then press Finish.

A SYN flood attack attempts to slow your network by requesting new connections but not completing the process to open the connection. Once the buffer for these pending connections is full a server will not accept any more connections and will be unresponsive.

ICMP Flood: A sender transmits a volume of ICMP request packets to cause all CPU resources to be consumed serving the phony requests.

UDP Flood: A sender transmits a volume of requests for UDP diagnostic services which cause all CPU resources to be consumed serving the phony requests.

A ping of death attack attempts to crash your system by sending a fragmented packet, when reconstructed is larger than the maximum allowable size. Other known variants of the ping of death include teardrop, bonk and nestea.

A land attack is an attempt to slow your network down by sending a packet with identical source and destination addresses originating from your network.

IP Spoofing is a method of masking the identity of an intrusion by making it appear that the traffic came from a different computer. This is used by intruders to keep their anonymity and can be used in a Denial of Service attack.

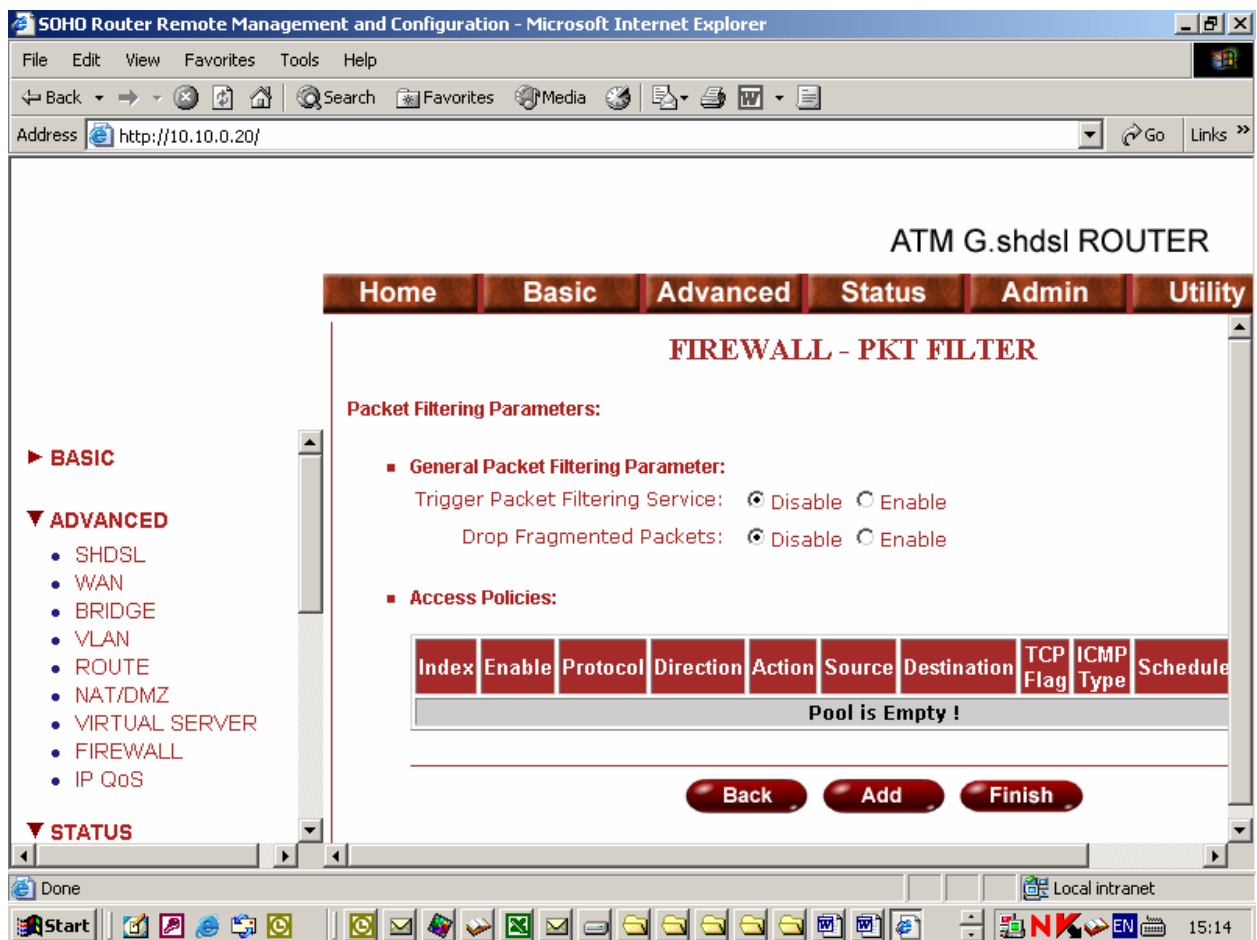
A smurf attack involves two systems. The attacker sends a packet containing a ICMP echo request (ping) to the network address of one system. This system is known as the amplifier. The return address of the ping has been faked (spoofed) to appear to come from a machine on another network (the victim). The victim is then flooded with responses to the ping. As many responses are generated for only one attack, the attacker is able use many amplifiers on the same victim.

IP Spoofing: Falsify the IP header information to deceive the destination host.

Traditional firewall are stateless meaning they have no memory of the connections of data or packets that pass through them. Such IP filtering firewalls simply examine header information in each packet and attempt to match it to a set of define rule. If the firewall finds a match, the prescribe action is taken. If no match is found, the packet is accepted into the network, or dropped, depending on the firewall configuration.

A stateful firewall maintains a memory of each connection and data passing through it. Stateful firewall records the context of connections during each session, continuously updating state information in dynamic tables. With this information, stateful firewalls inspect each connection traversing each interface of the firewall, testing the validity of data packets throughout each session. As data arrives, it is checked against the state tables and if the data is part of the session, it is accepted. Stateful firewalls enable a more intelligent, flexible and robust approach to network security, while defeating most intrusion methods that exploit state-less IP filtering firewalls.

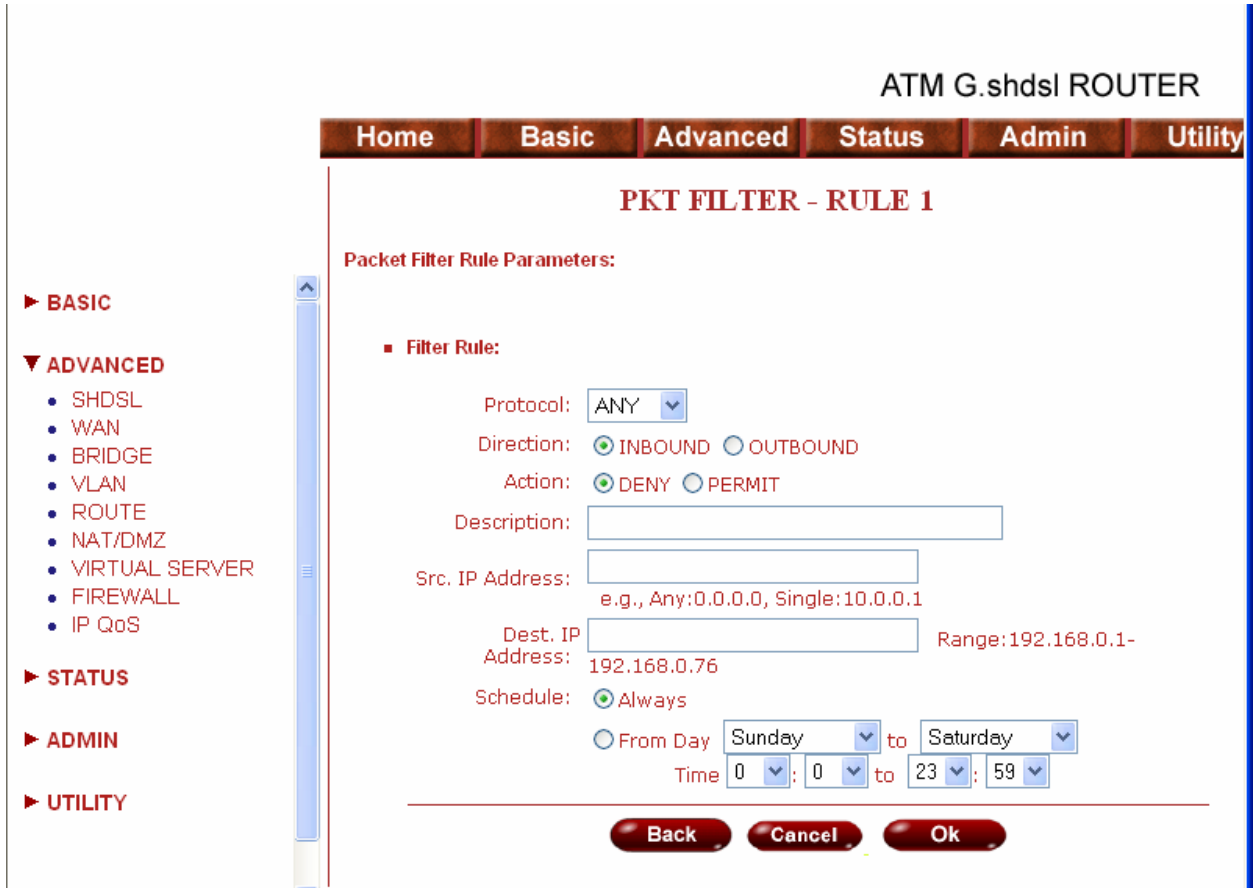
If you want to configure the Packet Filtering Parameters, choose Enable and press Add.



Select the protocol and configure the parameter.

If you want to ban all of the protocol from the IP (e.g.: 200.1.1.1) to access the all PCs (e.g.: 192.168.0.2 ~ 192.168.0.50) in the LAN, key in the parameter as;

Protocol: ANY  
 Direction: INBOUND (INBOUND is from WAN to LAN, and OUTBOUND is LAN to WAN.)  
 Description: Hacker  
 Src. IP Address: 200.1.1.1  
 Dest. IP Address: 192.168.0.2-192.168.0.50  
 Press OK to finish.



The screen will prompt the configured parameters. Check the parameters.

Click Restart to restart the gateway or Continue to configure other parameters.

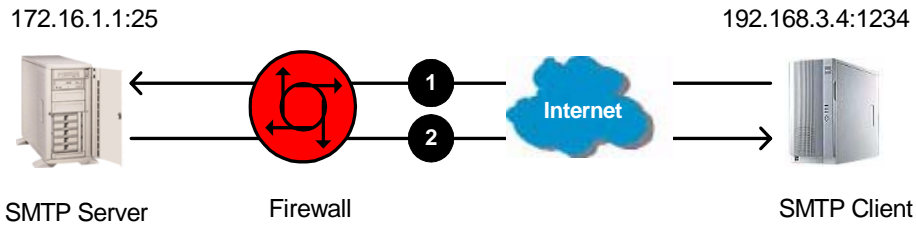
### Filtering Rule for SMTP connection

Filtering rule will be configured as follow

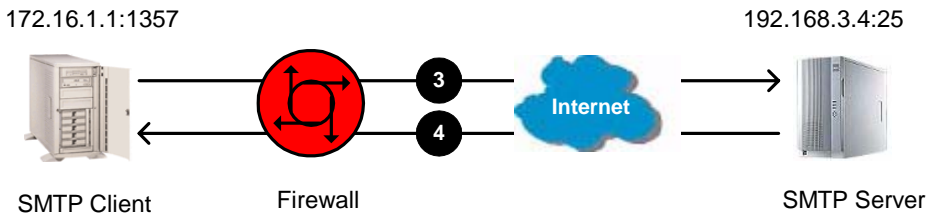
Index	Protocol	Direction	Action	Source	Destination	Dest. Port	Schedule
1	TCP	Inbound	Permit	External	Internal	25	Always
2	TCP	Outbound	Permit	Internal	External	>1023	Always
3	TCP	Outbound	Permit	Internal	External	25	Always
4	TCP	Inbound	Permit	External	Internal	>1023	Always
5	Any	Either	Deny	Any	Any	Any	Always

Packet	Direction	Source	Destination	Protocol	Dest. Port	Action (Rule)
1	Inbound	192.168.3.4	172.16.1.1	TCP	25	Permit (A)
2	Outbound	172.16.1.1	192.168.3.4	TCP	1234	Permit (B)

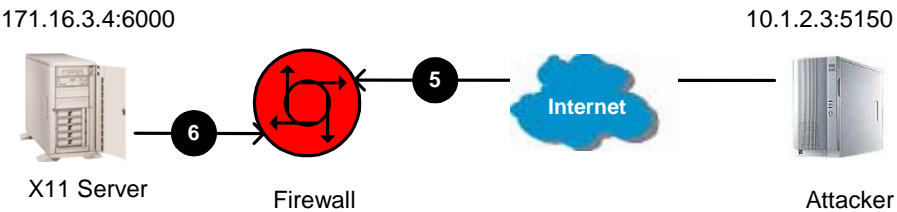




Packet	Direction	Source	Destination	Protocol	Dest. Port	Action (Rule)
3	Outbound	172.16.1.1	192.168.3.4	TCP	25	Permit (C)
4	Inbound	192.168.3.4	172.16.1.1	TCP	1357	Permit (D)



Packet	Direction	Source	Destination	Protocol	Dest. Port	Action (Rule)
5	Inbound	10.1.2.3	171.16.3.4	TCP	6000	Deny (E)
6	Outbound	171.16.3.4	10.1.2.3	TCP	5150	Deny (E)



### Update Filtering Rule

Index	Protocol	Direction	Action	Source	Destination	Source Port	Dest. Port
1	TCP	Inbound	Permit	External	Internal	>1023	25
2	TCP	Outbound	Permit	Internal	External	25	>1023
3	TCP	Outbound	Permit	Internal	External	>1023	25
4	TCP	Inbound	Permit	External	Internal	25	>1023
5	Any	Either	Deny	Any	Any	Any	Any

### Filtering Result

Index	Protocol	Direction	Action	Source	Destination	Source Port	Dest. Port
1	TCP	Inbound	Permit(A)	192.168.3.4	171.16.1.1	1234	25
2	TCP	Outbound	Permit(B)	171.16.1.1	192.168.3.4	25	1234
3	TCP	Outbound	Permit(C)	171.16.1.1	192.168.3.4	1357	25
4	TCP	Inbound	Permit(D)	192.168.3.4	171.16.1.1	25	1357
5	TCP	Inbound	Deny(E)	10.1.2.3	171.16.3.4	5150	6000
6	TCP	Outbound	Deny(E)	171.16.3.4	10.1.2.3	6000	5150

## Rule Order

The rules order affects the filtering result. The filtering process will proceed from top to bottom, changing the order as the different result of filtering.

Rule	Source Address	Destination Address	Action
A	10.0.0.0	172.16.6.0	Permit
B	10.1.99.0	172.16.0.0	Deny
C	Any	Any	Deny

Where "0" at the last eight bits indicates "from 1 to 254", "0" at any eight bits preceding "0", "0.0" or "0.0.0" indicates "from 1 to 254". On the other hand, "0" and all "0" successive with "0" represents any.

When the rule is ordered as ABC.

Index	Source Address	Destination Address	Action
1	10.1.99.1	172.16.1.1	Deny (B)
2	10.1.99.1	172.16.6.1	Permit (A)
3	10.1.1.1	172.16.6.1	Permit (A)
4	10.1.1.1	172.16.1.1	Deny (C)
5	192.168.3.4	172.16.6.1	Deny (C)

The rule order will permit 10.1.99.1 to access 172.16.6.1.

When the rule is ordered as BAC.

Index	Source Address	Destination Address	Action
1	10.1.99.1	172.16.1.1	Deny (B)
2	10.1.99.1	172.16.6.1	Deny (B)
3	10.1.1.1	172.16.6.1	Permit (A)
4	10.1.1.1	172.16.1.1	Deny (C)
5	192.168.3.4	172.16.6.1	Deny (C)

The rule order will deny 10.1.99.1 to access 172.6.6.1.

## *Administration*

▶ **BASIC**

▶ **ADVANCED**

▶ **STATUS**

▼ **ADMIN**

- SECURITY
- SNMP
- TIME SYNC

▶ **UTILITY**

This session introduces security and simple network management protocol (SNMP) and time synchronous.

## Security

For system security, suggest to change the default user name and password in the first setup otherwise unauthorized persons can access the router and change the parameters.

There are three ways to configure the router, Web browser, telnet and serial console.

Press **Security** to setup the parameters.

Home
Basic
Advanced
Status
Admin
Utility

ADMIN - SECURITY

**Supervisor Profile and Security Parameters:**

- **Supervisor ID and Password:**

Supervisor ID:

Supervisor Password:

Password Confirm:
- **User Profile:**

ID	User Name	User Password	Password Confirm	UI Mode
1	admin	****	****	Menu
2	<input type="text"/>	<input type="password"/>	<input type="password"/>	Command
3	<input type="text"/>	<input type="password"/>	<input type="password"/>	Command
4	<input type="text"/>	<input type="password"/>	<input type="password"/>	Command
5	<input type="text"/>	<input type="password"/>	<input type="password"/>	Command
- **General Parameters:**

Telnet Port:
- **Remote Management Host:**

Modify legal management IP address. Note, an empty pool defaults to a security level that would allow any management connections from any host in LAN but deny all connections from WAN side. A 0.0.0.0 entry in the pool will allow all management connections from any host, including the Internet.

ID	IP Address
1	0.0.0.0
2	<input type="text"/>
3	<input type="text"/>
4	<input type="text"/>
5	<input type="text"/>

For greater security, change the Supervisor ID and password for the gateway. If you don't set them, all users on your network can be able to access the gateway using the default IP and Password root.

You can authorize five legal users to access the router via telnet or console. There are two UI modes, menu driven mode and command mode to configure the router.

Legal address pool will setup the legal IP addresses from which authorized person can configure the gateway. This is the more secure function for network administrator to setup the legal address of configuration.

Configured 0.0.0.0 will allow all hosts on Internet or LAN to access the router.

Leaving blank of trust host list will cause blocking all PC from WAN to access the router. On the other hand, only PC in LAN can access the router.

If you type the exact IP address in the field, only the host can access the router.

Click **Finish** to finish the setting.

The browser will prompt the configured parameters and check it before writing into EPROM.

Press **Restart** to restart the gateway working with the new parameters and press **Continue** to setup other parameters.

## SNMP

Simple Network Management Protocol (SNMP) provides for the exchange of messages between a network management client and a network management agent for remote management of network nodes. These messages contain requests to get and set variables that exist in network nodes in order to obtain statistics, set configuration parameters, and monitor network events. SNMP communications can occur over the LAN or WAN connection.

The router can generate SNMP traps to indicate alarm conditions, and it relies on SNMP community strings to implement SNMP security. This router support MIB I and MIB II.

Click **SNMP** to configure the parameters.

In the table of current community pool, you can setup the access authority.

In the table of current trap host pool, you can setup the trap host.

Home Basic Advanced Status Admin Utility

ADMIN - SNMP

SNMP Community and Trap Parameters:

- Table of current community pool:

Index	Status	Access Right	Community
1	Disable	---	---
2	Disable	---	---
3	Disable	---	---
4	Disable	---	---
5	Disable	---	---

Reset Modify

- Table of current trap host pool:

Index	Version	IP Address	Community
1	Disable	---	---
2	Disable	---	---
3	Disable	---	---
4	Disable	---	---
5	Disable	---	---

Reset Modify

Cancel Reset Finish

Press **Modify** to modify the community pool.

SNMP status: Enable

■ **Table of current community pool:**

Index	Status	Access Right	Community
1	Disable ▾	Deny ▾	private
2	Disable Enable	---	---
3	Disable	---	---
4	Disable	---	---
5	Disable	---	---

Access Right: Deny for deny all access  
 Access Right: Read for access read only  
 Access Right: Write for access read and write.  
 Community: it serves as password for access right.  
 After configuring the community pool, press **OK**.

■ **Table of current community pool:**

Index	Status	Access Right	Community
1	Disable ▾	Deny ▾	private
2	Disable	Deny Read Write	---
3	Disable	---	---
4	Disable	---	---
5	Disable	---	---

■ **Table of current trap host pool:**

Index	Version	IP Address	Community
1	Disable ▾	192.168.0.254	private
2	Disable Version 1 Version 2	---	---
3	Disable	---	---
4	Disable	---	---
5	Disable	---	---

SNMP trap is an informational message sent from an SNMP agent to a manager. Click Modify to modify the trap host pool.

Version: select version for trap host (SNMP v1 or SNMP v2).  
 IP: type the trap host IP  
 Community: type the community password. The community is setup in community pool.  
 Press **OK** to finish the setup.

The browser will prompt the configured parameters and check it before writing into EPROM.

Press **Restart** to restart the gateway working with the new parameters and press **Continue** to setup other parameters.

## Time Sync

Time synchronization is an essential element for any business that relies on an IT system. The reason for this is that these systems all have clocks that are the source of time for files or operations they handle. Without time synchronization, time on these systems varies with each other or with the correct time and this can cause-, firewall packet filtering schedule processes to fail, security to be compromised, virtual server works in wrong schedule.

Click **TIME SYNC**.

Home Basic Advanced Status Admin Utility

ADMIN - TIME SYNC

**Time Synchronization:**

- **SYNC method:**  
Sync with PC  
SNTP v4.0  
Sync with PC
- **Time synchronization with client:**  
System Time: 2002/01/01 01:49:36 (GMT+8:00) **Sync Now**

There are two synchronization modes: Sample Network Time Protocol (SNTP) and synchronization with PC. For synchronization with PC, select Sync with PC. The gateway will synchronize the time with the connecting PC.

Home	Basic	Advanced	Status	Admin	Utility
<b>ADMIN - TIME SYNC</b>					
<b>Time Synchronization:</b>					
<ul style="list-style-type: none"> <li> <b>SYNC method:</b>  <input type="text" value="SNTP v4.0"/> </li> <li> <b>Simple network time protocol:</b>            Service: <input type="radio"/> Disable <input checked="" type="radio"/> Enable            Time Server 1: <input type="text" value="ntp-2.vt.edu"/>            Time Server 2: <input type="text" value="ntp.drydog.com"/>            Time Server 3: <input type="text" value="ntp1.cs.wisc.edu"/>            Time Zone: <input type="text" value="GMT(+08:00) HONG KONG, PERTH, SINGAPORE, TAIPEI"/>            Update Period (secs): <input type="text" value="3600"/> </li> </ul>					
<input type="button" value="Cancel"/> <input type="button" value="Reset"/> <input type="button" value="Finish"/>					

SNTP is the acronym for Simple Network Time Protocol, which is an adaptation of the Network Time Protocol (NTP) used to synchronize computer clocks in the Internet. SNTP can be used when the ultimate performance of the full NTP implementation.

For SNTP, select SNTP v4.0.

SNTP service: Enable

Time Server: All of the time server around the world can be used but suggest to use the timeserver nearby.

Time Zone: you have to choose the right time zone.

Press Finish to finish the setup. The browser will prompt the configured parameters and check it before writing into EPROM.



## Utility

▶ BASIC

▶ ADVANCED

▶ STATUS

▶ ADMIN

▼ UTILITY

- SYSTEM INFO
- CONFIG TOOL
- UPGRADE
- LOGOUT
- RESTART

This section will describe the utility of the product including system information, load the factory default configuration, upgrade the firmware logout and restart the gateway.

### System Info

Click [System Info](#) for review the information.

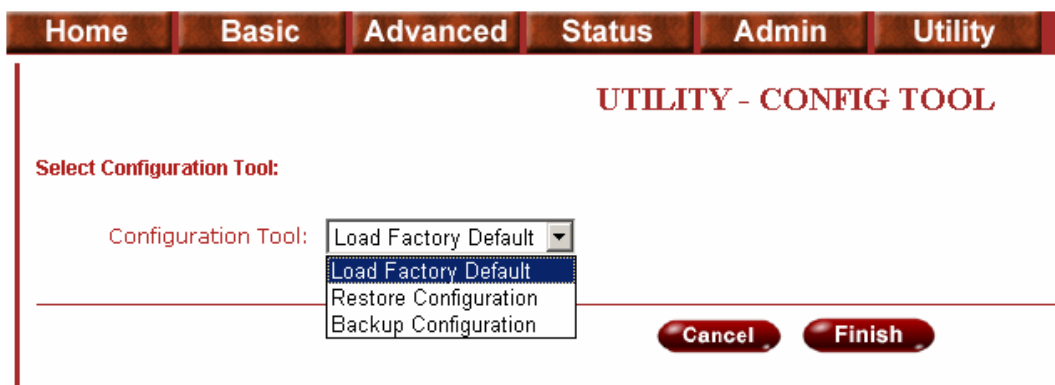
The browser will prompt the system information.

### Config Tool

This configuration tool has three functions: load Factory Default, Restore Configuration and Backup Configuration.

Press [Config Tool](#).

Choose the function and then press finish.



- Load Factory Default function: it will load the factory default parameters to the gateway.

**Note: All of the settings will be changed to factory default. On the other hand you will lose all the configured parameters.**

- Restore Configuration: Sometime the configuration will be crushed unintentionally. Restore configuration will help you to recover the backup configuration easily.
- Click Finish after selecting Restore Configuration.
- Browse the route of backup file then press finish. The router will automatically restore the saved configuration.
- Backup Configuration: After configuration, suggest using the function to backup your router parameters in the PC.
- Select the Backup Configuration and then press Finish.
- Browse the place of backup file named backup. Press Finish. The router will automatically backup the configuration.

## Upgrade

You can upgrade the gateway using the upgrade function.

Press **Upgrade**.

Browse the file and press OK button to upgrade. The system will reboot automatically after finishing.

## Logout

To logout the router, press logout.

## Restart

For restarting the router, click the **Restart** in UTILITY.

Press **Restart** to reboot the router.

## *Status*

### ▶ BASIC

### ▶ ADVANCED

### ▼ STATUS

- SHDSL
- LAN
- WAN
- ROUTE
- INTERFACE

### ▶ ADMIN

### ▶ UTILITY

You can monitor the SHDSL status including mode, Tx power and Bitrate and Performance information including SNR margin, attenuation and CRC error count.

LAN status will prompt the MAC address, IP address, Subnet mask and DHCP client table.

WAN status will display the WAN interface information.

You can view the routing table in the status of route.

Interface status includes LAN and WAN statistics information.

Firewall status displays DoS protection status and dropped packets statistics.

*LAN-to-LAN connection with bridge Mode*

CO side

Home	Basic	Advanced	Status	Admin	Utility
------	-------	----------	--------	-------	---------

**BASIC - STEP1**

**Operation Mode:**

**System Mode:**  ROUTE  BRIDGE

**SHDSL Mode:**  CO Side  CPE Side

---

Click  and  Side to setup Bridging mode of the Router and then click .

Home	Basic	Advanced	Status	Admin	Utility
------	-------	----------	--------	-------	---------

**BASIC - STEP2**

**LAN:**

IP Address:  .  .  .

Subnet Mask:  .  .  .

Gateway:  .  .  .

Host Name:

**WAN1:**

VPI:

VCI:

Encap.:  VC-mux  LLC

---

LAN Parameters

Enter IP: 192.168.0.1

Enter Subnet Mask: 255.255.255.0

Enter Gateway: 192.168.0.1

Enter Host Name: SOHO

WAN1 Parameters

Enter VPI: 0

Enter VCI: 32

Click **LLC**

Click **Next**

The screen will prompt the new configured parameters. Check the parameters and Click **Restart** The router will reboot with the new setting.

CPE Side

Home	Basic	Advanced	Status	Admin	Utility
------	-------	----------	--------	-------	---------

**BASIC - STEP1**

**Operation Mode:**

**System Mode:**  ROUTE  BRIDGE

**SHDSL Mode:**  CO Side  CPE Side

---

**Cancel** **Reset** **Next**

Click **Bridge** and **CO** Side to setup Bridging mode of the Router and then click **Next**.

Home	Basic	Advanced	Status	Admin	Utility
------	-------	----------	--------	-------	---------

**BASIC - STEP2**

**LAN:**

IP Address:  .  .  .

Subnet Mask:  .  .  .

Gateway:  .  .  .

Host Name:

**WAN1:**

VPI:

VCI:

Encap.:  VC-mux  LLC

---

**Back** **Cancel** **Reset** **Next**

LAN Parameters

Enter IP: 192.168.0.2

Enter Subnet Mask: 255.255.255.0

Enter Gateway: 192.168.0.2

Enter Host Name: SOHO

WAN1 Parameters

Enter VPI: 0

Enter VCI: 32

Click LLC

Click Next

The screen will prompt the new configured parameters. Check the parameters and Click Restart The router will reboot with the new setting.

## LAN to LAN Connection with Routing Mode

### CO side

Home Basic Advanced Status Admin Utility

**BASIC - STEP1**

Operation Mode:

System Mode:  ROUTE  BRIDGE

SHDSL Mode:  CO Side  CPE Side

Cancel Reset Next

Click **ROUTE** and **CO Side** then press **Next**.

Home Basic Advanced Status Admin Utility

**BASIC - STEP2**

LAN:

IP Type:  Fixed  Dynamic(DHCP Client)

IP Address: 10 . 0 . 81 . 1

Subnet Mask: 255 . 0 . 0 . 0

Host Name: SOHO

Trigger DHCP Service:  Disable  Server  Relay

Back Cancel Reset Next

Type LAN parameters:

IP Address: 192.168.20.1

Subnet Mask: 255.255.255.0

Host Name: SOHO

DHCP Service: For more DHCP service, review DHCP Service.

Home Basic **Advanced** Status Admin Utility

**BASIC - STEP3**

**WAN1:**

VPI:

VCI:

AAL5 Encap:  VC-mux  LLC

Protocol: 

- IPoA
- IPoA+NAT
- EoA
- EoA+NAT
- PPPoA+NAT
- PPPoE+NAT

Home Basic **Advanced** Status Admin Utility

**BASIC - STEP4**

**WAN1:**

IP Address:  .  .  .

Subnet Mask:  .  .  .

Gateway:  .  .  .

DNS Server 1:

DNS Server 2:

DNS Server 3:

Type the Wan Parameters;

VPI: 0

VCI: 32

AAL5 Encap:

Protocol:  ,  ,  or

Note: The Protocol used in CO and CPE have to be the same.

Click  to setup the IP parameters.

For more understanding about NAT, review NAT/DMZ in page 19.



IP Address: 192.168.20.1  
Subnet mask: 255.255.255.0  
Gateway: 192.169.30.2  
Click **Next**

The screen will prompt the parameters that will be written in EPROM. Check the parameters before writing in EPROM.

Press Restart to restart the router working with new parameters or press continue to setup another parameter.

### CPE side

Home Basic **Advanced** Status Admin Utility

**BASIC - STEP1**

Operation Mode:

System Mode:  ROUTE  BRIDGE

SHDSL Mode:  CO Side  CPE Side

Cancel Reset Next

Click **ROUTE** and **CPE Side** then press **Next**.

Home Basic **Advanced** Status Admin Utility

**BASIC - STEP2**

LAN:

IP Type:  Fixed  Dynamic(DHCP Client)

IP Address: 10 . 0 . 81 . 1

Subnet Mask: 255 . 0 . 0 . 0

Host Name: SOHO

Trigger DHCP Service:  Disable  Server  Relay

Back Cancel Reset Next

Type LAN parameters:

IP Address: 192.168.10.1

Subnet Mask: 255.255.255.0

Host Name: SOHO

DHCP Service: For more DHCP service, review DHCP Service.

Type the Wan Parameters;

VPI: 0

VCI: 32

AAL5 Encap: LLC

Protocol: IPoA, EoA, IPoA + NAT or EoA + NAT

**Note:** The Protocol used in CO and CPE have to be the same.

Click **Next** to setup the IP parameters.

For more understanding about NAT, review NAT/DMZ in page 19.

Home Basic **Advanced** Status Admin Utility

**BASIC - STEP4**

**WAN1:**

IP Address: 10 . 0 . 81 . 1

Subnet Mask: 255 . 0 . 0 . 0

Gateway: . . . .

DNS Server 1: 168.95.1.1

DNS Server 2: 168.95.192.1

DNS Server 3:

Back Cancel Reset Next

IP Address: 192.168.30.2  
Subnet mask: 255.255.255.0  
Gateway: 192.169.30.1  
Click Next

The screen will prompt the parameters that will be written in EPROM. Check the parameters before writing in EPROM.

Press Restart to restart the router working with new parameters or press continue to setup another parameter.

## Configuration via Serial Console or Telnet with Manu Driven Interface Serial Console

Check the connectivity of the RS-232 cable from your computer to the serial port of ROUTER. Start your terminal access program with VT100 terminal emulation. Configure the serial link with the following value:

Parameter	Value
Baudrate	9600
Data Bits	8
Parity Check	No
Stop Bits	1
Flow-control	No

Press the **SPACE** key until the login screen appears. When you see the login screen, you can logon to Router.

Note: You have to use **SPACE** key. Pressing other keys does not work.

**User:** admin  
**Password:** \*\*\*\*\*

Note: The factory default user and passwords are both "admin".

## Telnet

Make sure the correct Ethernet cable is used for connecting the LAN port of your computer to ROUTER. The LAN LNK indicator on the front panel shall light if a correct cable is used. Starting your Telnet client with VT100 terminal emulation and connecting to the management IP of Router, wait for the login screen appears. When you see the login screen, you can logon to Router.

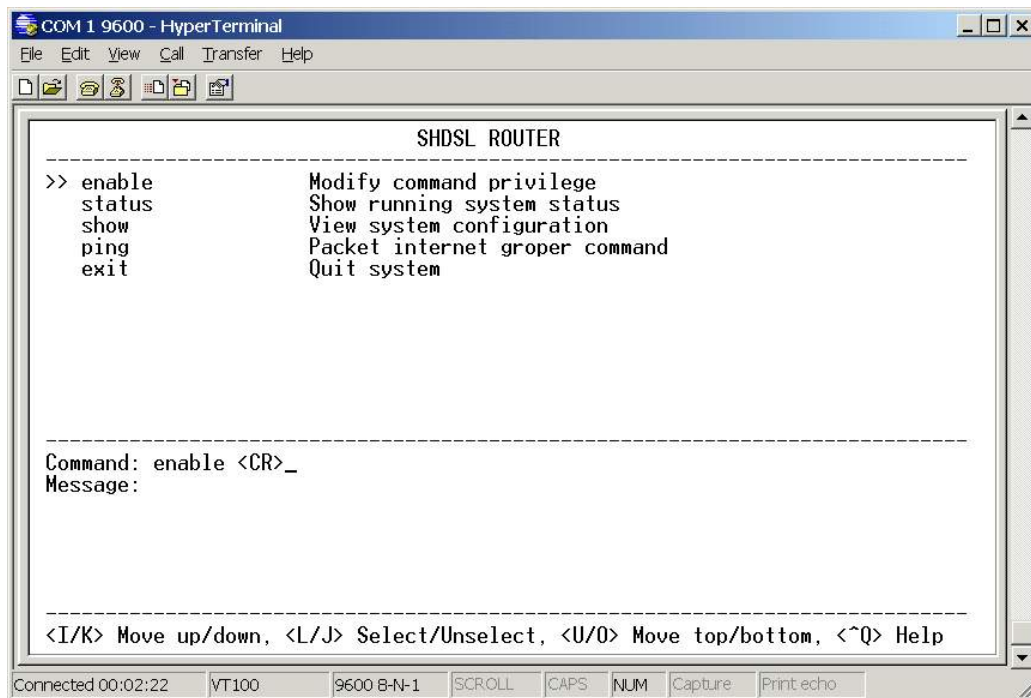
**User:** admin  
**Password:** \*\*\*\*\*

Note: The default IP address is 192.168.0.1

### Configuration via Serial Console or Telnet

For serial console and Telnet management, the ROUTER implements two operational interfaces: command line interface (CLI) and menu driven interface. The CLI mode provides users a simple interface, which is better for working with script file. The menu driven interface is a user-friendly interface to general operations. The command syntax for CLI is the same as that of the menu driven interface. The only difference is that the menu driven interface shows you all of available commands for you to select. You don't need to remember the command syntax and save your time on typing the whole command line.

The following figure gives you an example of the menu driven interface. In the menu, you scroll up/down by pressing key `↑/↓`, select one command by key `→`, and go back to a higher level of menu by key `←`. For example, to show the system information, just logon to the ROUTER, move down the cursor by pressing key `↓` twice and select "show" command by key `→`, you shall see a submenu and select "system" command in this submenu, then the system will show you the general information.



### Window structure

From top to bottom, the window will be divided into four parts:

1. Product name
2. Menu field: Menu tree is prompted on this field. ">" symbol indicates the cursor place.
3. Configuring field: You will configure the parameters in this field. **< parameters >** indicates the parameters you can choose and **< more...>** indicates that there have submenu in the title.
4. Operation command for help

The following table shows the parameters in the brackets.

Command	Description
<b>&lt;ip&gt;</b>	An item enclosed in brackets is required. If the item is shown in lower case bold, it represents an object with special format. For example, <b>&lt;ip&gt;</b> may be <b>192.168.0.3</b> .
<b>&lt;Route Bridge&gt;</b>	Two or more items enclosed in brackets and separated by vertical bars means that you must choose exactly one of the items. If the item is shown in lower case bold with leading capital letter, it is a command parameter. For example, <b>Route</b> is a command parameter in <b>&lt;Route Bridge&gt;</b> .
<b>[1~1999]</b>	An item enclosed in brackets is optional.
<b>[1~65534 -t]</b>	Two or more items enclosed in brackets and separated by vertical bars means that you can choose one or none of the items.

## Menu Driven Interface Commands

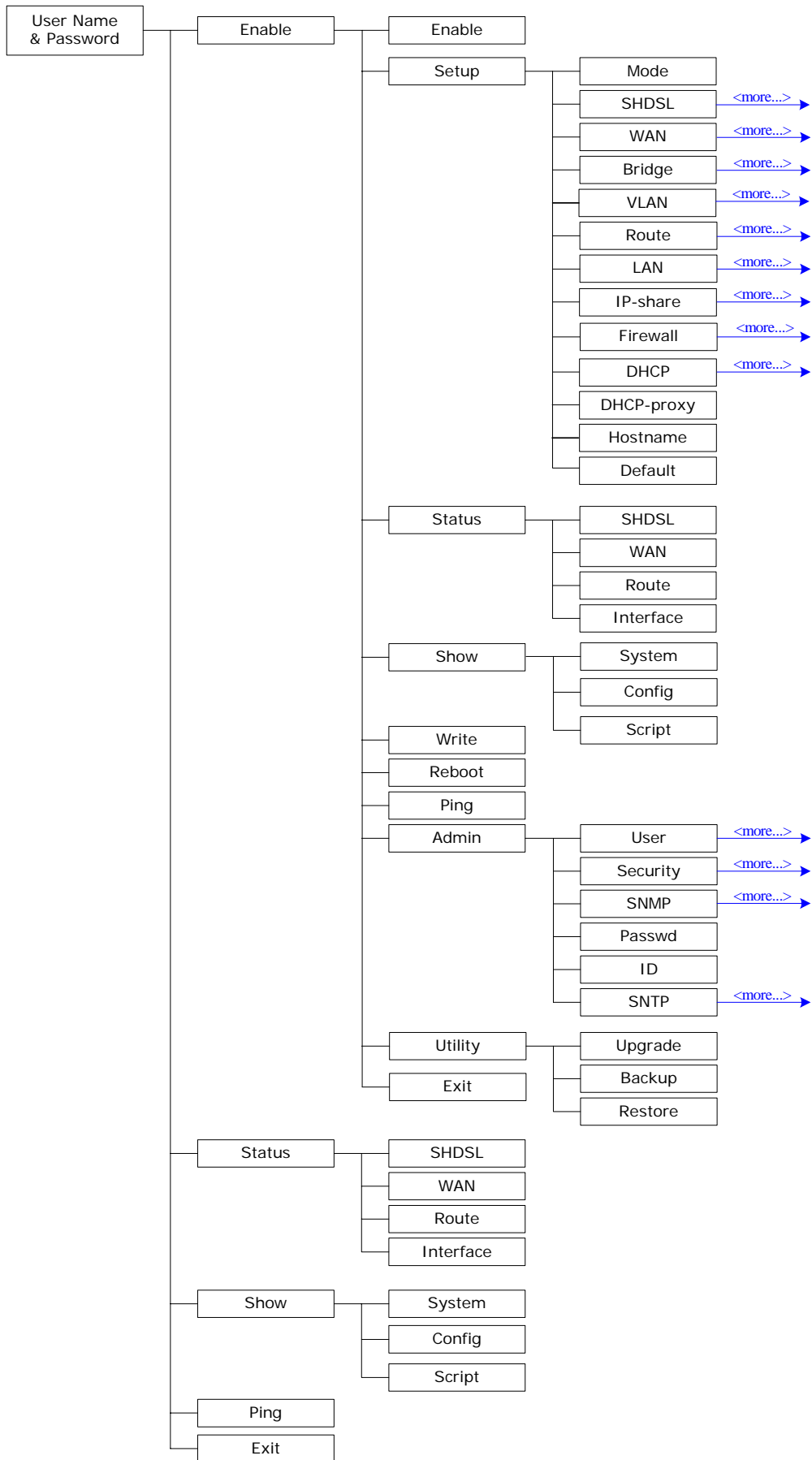
Before changing the configuration, familiarize yourself with the operations list in the following table. The operation list will be shown on the window.

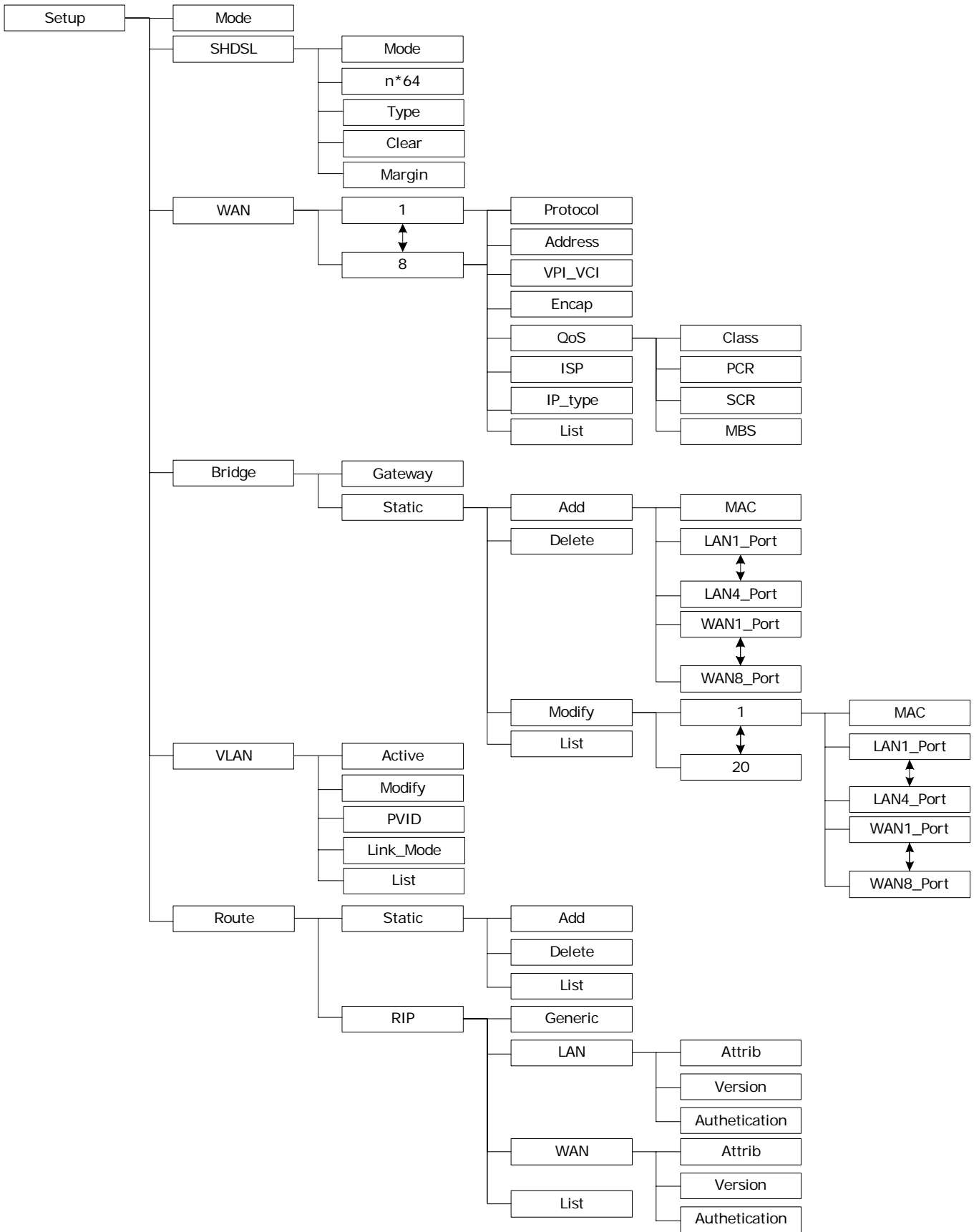
### Menu Driven Interface Commands

Keystroke	Description
[UP] or I	Move to above field in the same level menu.
[DOWN] or K	Move to below field in the same level menu.
[LEFT] or J	Move back to previous menu.
[RIGHT] or L	Move forward to submenu.
[ENTER]	Move forward to submenu.
[TAB]	To choose another parameters.
Ctrl + C	To quit the configuring item.
Ctrl + Q	For help

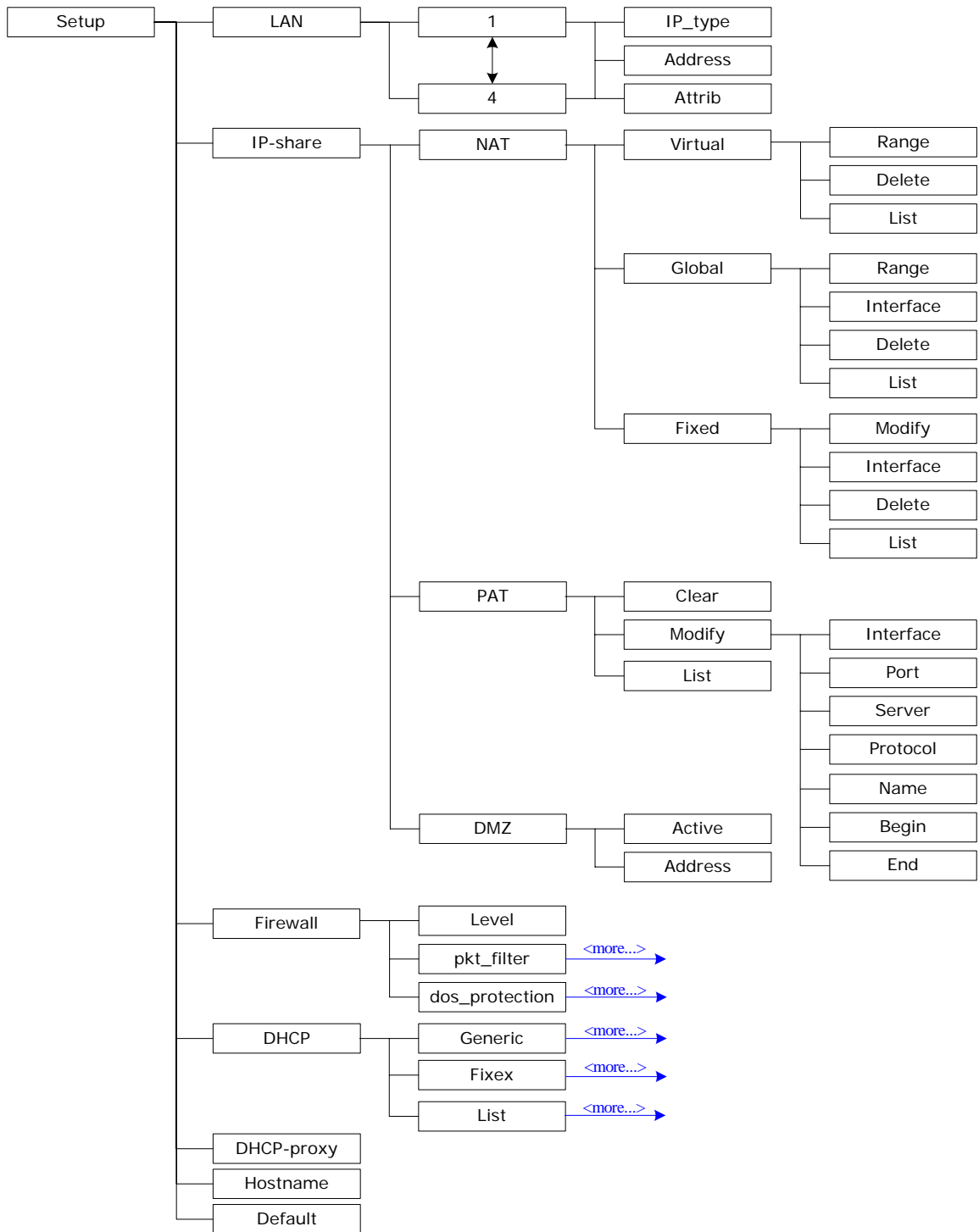
## Menu Tree

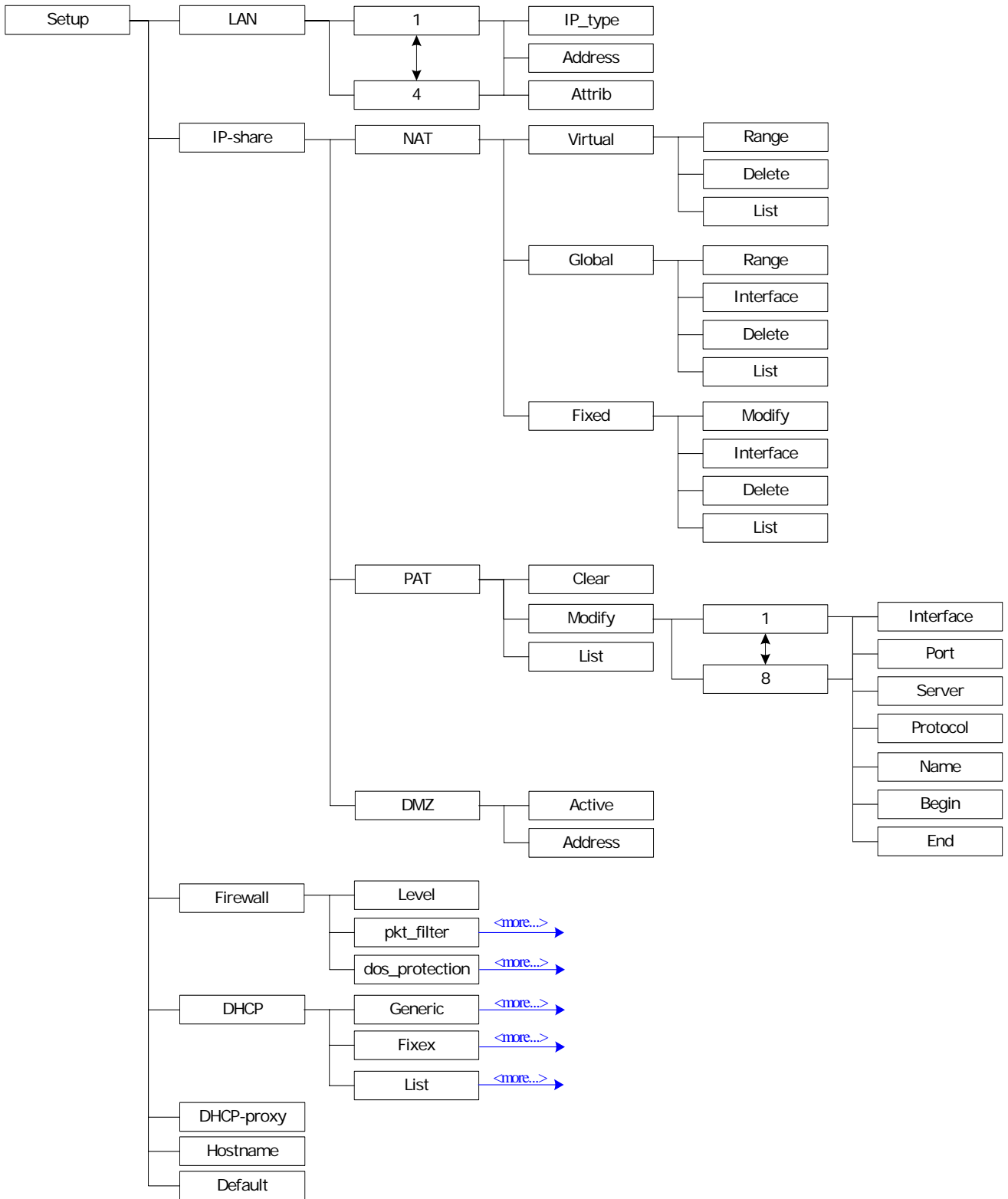
The menu three are as following figures. All of the configuration commands are placed in the subdirectories of Enable protected by supervisor password. On the other hand, unauthorized user cannot change any configurations but viewing the status and configuration of the router and using ping command to make sure the router is worked.

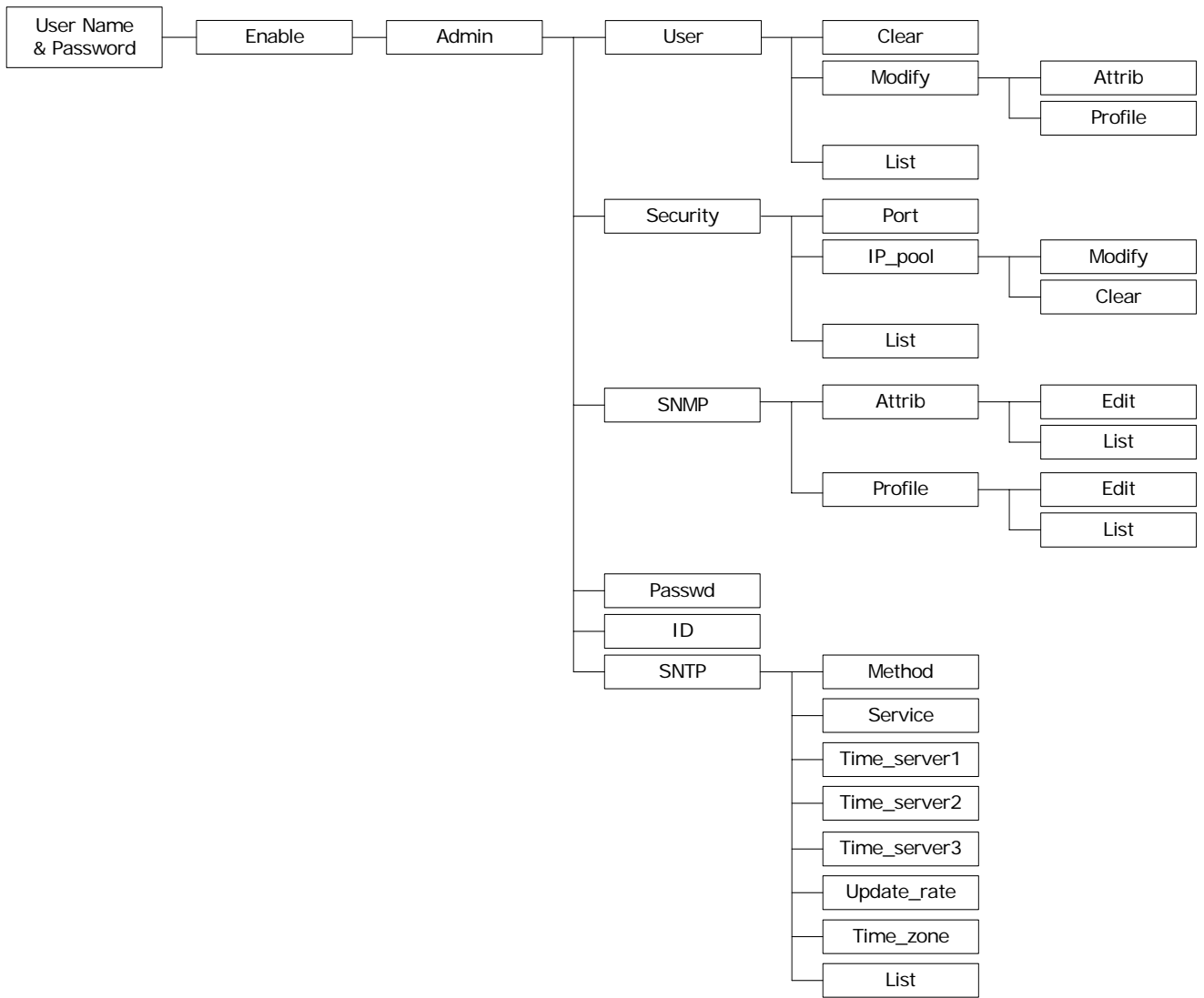












### Configuration

To setup the router, move the cursor “>>” to **enable** and press enter key. While the screen appears, type the supervisor password. The default supervisor password is **root**. The password will be prompted as “\*” symbol for system security.

-----  
 Command: enable <CR>

Message: Please input the following information.

Supervisor password: \*\*\*\*  
 -----

In this sub menu, you can setup management features and upgrade software, backup the system configuration and restore the system configuration via utility tools.

For any changes of configuration, you have to write the new configuration to EPROM and reboot the router to work with new setting.

The screen will prompt as follow.

```
-----
>   enable           Modify command privilege
>
   setup            Configure system
   status           Show running system status
   show             View system configuration
   write            Update flash configuration
   reboot          Reset and boot system
   ping            Packet internet groper command
   admin           Setup management features
   utility          TFTP upgrade utility
   exit            Quit system
-----
```

The description of the commands are:

Command	Description
enable	Modify command privilege. When you login via serial console or Telnet, the router defaults to a program execution (read-only) privileges to you. To change the configuration and write changes to nonvolatile RAM (NVRAM), you must work in enable mode.
setup	To configure the product, you have to use the setup command.
status	View the status of product.
show	Show the system and configuration of product.
write	Update flash configuration. After you have completed all necessary setting, make sure to write the new configuration to NVRAM by “ <b>write</b> ” command and reboot the system, or all of your changes will not take effect.
reboot	Reset and boot system. After you have completed all necessary setting, make sure to write the new configuration to NVRAM and reboot the system by “ <b>reboot</b> ” command, or all of your changes will not take effect.
ping	Packet internet groper command.
admin	You can setup management features in this command.
utility	Upgrade software and backup and restore configuration are done via “ <b>utility</b> ” command.
exit	Quit system

## Status

You can view running system status of SHDSL, WAN, route and interface via **status** command.

Move cursor “ >> “ to **status** and press enter.

```
-----  
> shdsl          Show SHDSL status  
>  
  wan           Show WAN interface status  
  route         Show routing table  
  interface     Show interface statistics status  
  firewall      Show firewall status  
-----
```

Command	Description
shdsl	The SHDSL status includes line rate, SNR margin, TX power, attenuation and CRC error of the product, and SNR margin, attenuation and CRC error of remote side. The product access remote side information via EOC (embedded operation channel).
wan	WAN status shows the 8 PVC information which are configured.
route	You can see the routing table via route command.
interface	The statistic status of WAN and LAN interface can be monitor by interface command.
firewall	The current and history status of firewall are shown in this command.

### Show

You can view the system information, configuration and configuration in command script by **show** command.

Move cursor “ >> “ to **show** and press enter.

```
-----
>   system           Show general information
>
>   config           Show all configuration
>   script           Show all configuration in command script
-----
```

Command	Description
system	The general information of the system will show in system command.
config	Config command can display detail configuration information.
script	Configuration information will prompt in command script.

### Write

For any changes of configuration, you must write the new configuration to EPROM using **write** command and reboot the router to take affect.

Move cursor to “ >> “ to **write** and press enter.

```
-----
Command: write <CR>
Message: Please input the following information.
```

Are you sure? (y/n): **y**

### Reboot

To reboot the router, use **reboot** command. Move cursor to “ >> “ to **write** and press enter.

```
-----
Command: reboot <CR>
Message: Please input the following information.
```

Do you want to reboot? (y/n): **y**

### Ping

Ping command will be used to test the connection of router. Move cursor “ >> “ to **ping** and press enter.

```
-----
Command: ping <ip> [1~65534]-t] [1~1999]
Message: Please input the following information.
```

```
IP address <IP> : 10.0.0.1
Number of ping request packets to send (TAB select): -t
Data size [1~1999]: 32
-----
```

There are 3 types of number of ping request packet to send, default, 1~65534 and –t. Default will send 4 packet and –t continuous packet until you key in Ctrl+c to stop.

## Administration

You can modify the user profile, telnet access, SNMP (Sample Network Management Protocol), supervisor information and SNTP (Simple Network Time Protocol) in **admin**. The route is **enable** → **admin**.

For configuration the parameters, move the cursor “>>” to **admin** and press enter.

```
-----
>   user           Manage user profile
>
>   security       Setup system security
>   snmp           Configure SNMP parameter
>   passwd         Change supervisor password
>   id             Change supervisor ID
>   sntp           Configure time synchronization
-----
```

## User Profile

You can use **user** command to clear, modify and list the user profile. You can setup at most five users to access the router via console port or telnet in user profile table however users who have the supervisor password can change the configuration of the router. Move the cursor “>>” to **user** and press enter key.

```
-----
>   clear          Clear user profile
>
>   modify         Modify the user profile
>   list           List the user profile
-----
```

You can delete the user by number using **clear** command. If you do not make sure the number of user, you can use **list** command to check it. **Modify** command is to modify an old user information or add a new user to user profile.

To modify or add a new user, move the cursor to modify and press enter.

```
-----
Command: admin user modify <1~5> <more...>
Message: Please input the following information.
```

```
-----
Legal access user profile number <1~5> : 2
-----
```

The screen will prompt as follow.

```
-----
>   Attrib         UI mode
>
>   Profile        User name and password
-----
```

There are two UI mode, command and menu mode, to setup the product. We will not discuss command mode in this manual.

## Security

Security command can be configured sixteen legal IP address for telnet access and telnet port number.

Move the cursor “>>” to **security** and press enter. The default legal address is 0.0.0.0. It means that there is no restriction of IP to access the router via telnet.

```
-----
>   port           Configure telnet TCP port
>
>   ip_pool        Legal address IP address pool
>   list           Show security profile
-----
```

## SNMP

Simple Network Management Protocol (SNMP) is the protocol not only governing network management, but also the monitoring of network devices and their functions.

The router can generate SNMP traps to indicate alarm conditions, and it relies on SNMP community strings to implement SNMP security. This router support MIB I & II.

Move the cursor “>>” to **snmp** and press enter.

```
-----
>   community      Configure community parameter
>
>   trap           Configure trap host parameter
-----
```

5 SNMP community entry can be configured in this system. Move the cursor to community and press enter.

```
-----
Command: admin snmp community <1~5> <more...>
Message: Please input the following information.
```

```
Community entry number <1~5> : 2
-----
```

The screen will prompt as follow:

```
-----
>   edit           Edit community entry
>
>   list           Show community configuration
-----
```

5 SNMP trap entry can be configured in this system. Move the cursor to trap and press enter.

```
-----
Command: admin snmp trap <1~5> <more...>
Message: Please input the following information.
```

```
Trap host entry number <1~5> : 2
-----
```

The screen will prompt as follow:

```
-----
>   edit           Edit trap host parameter
>
>   list           Show trap configuration
-----
```



## Supervisor password and ID

The supervisor password and ID are the last door for security but the most important. Users who access the router via web browser have to use the ID and password to configure the router and users who access the router via telnet or console mode have to use the password to configure the router. Suggest to change the ID and password after the first time of configuration, and save it. At next time when you access to the router, you have to use the new password.

```
-----  
Command: admin passwd <pass_conf>  
Message: Please input the following information.
```

```
Input old Supervisor password: ****  
Input new Supervisor password: *****  
Re-type Supervisor password: *****  
-----
```

```
-----  
Command: admin id <pass_conf>  
Message: Please input the following information.
```

```
Legal user name (Enter for default) <root> : test  
-----
```

## SNTP

Time synchronization is an essential element for any business that relies on an IT system. The reason for this is that these systems all have clocks that are the source of time for files or operations they handle. Without time synchronization, time on these systems varies with each other or with the correct time and this can cause- virtual server schedule processes to fail and system log exposures with wrong data.

There are two methods to synchronize time, synchronize with PC or SNTPv4. If you choose synchronize with PC, the router will synchronize with PC. If you choose SNTPv4, the router will use the protocol to synchronize with the time server. Synchronization with time server, SNTP v4, needs to configure service, time\_server and time\_zone. Synchronization with PC does not need to configure the above parameters.

Move the cursor ">>" to **sntp** and press enter.

```
-----  
> method Select time synchronization method  
>  
service Tigger SNTP v4.0 service  
time_server1 Configure time server 1  
time_server2 Configure time server 2  
time_server3 Configure time server 3  
updaterate Configure update period  
time_zone Configure GMT time zone offset  
list Show SNTP configuration  
-----
```

To configure SNTP v4 time synchronization, follow the below procedures.

move the cursor to method and press enter.

```
-----  
Command: admin sntp method <SNTPv4|SyncWithPC>  
Message: Please input the following information.
```

```
SYNC method (Enter for default) <SyncWithPC> : SNTPv4  
-----
```

Move the cursor to service and press enter.

```
-----
Command: admin sntp service <Disable|Enable>
Message: Please input the following information.
```

```
Active SNTP v4.0 service (Tab Select) <Enable> : Enable
-----
```

Move the cursor to time\_server1 and press enter.

```
-----
Command: admin sntp time_server1 <string>
Message: Please input the following information.
```

```
Time server address(Enter for default) <ntp-2.vt.edu> : ntp-2.vt.edu
-----
```

You can configure three time server in this system.

Move the cursor to update\_rate and press enter.

```
-----
Command: admin sntp update_rate <10~268435455>
Message: Please input the following information.
```

```
Update period (secs) (Enter for default) : 86400
-----
```

Move the cursor to time\_zone and configure where your router is placed. The easiest way to know the time zone offset hour is from your PC clock. Double click the clock at the right corner of monitor and check the time zone.

```
-----
Command: admin sntp time_zone <-12~12>
Message: Please input the following information.
```

```
GTM time zone offset (hours) (Enter for default) : -8
-----
```

Move the cursor to list and review the setting.

## Utility

There are three utility tools, upgrade, backup and restore, embedded in the firmware. You can update the new firmware via TFTP upgrade tools and backup the configuration via TFTP backup tool and restore the configuration via TFTP restore tool. For upgrade, TFTP server with the new firmware will be supported by supplier but for backup and restore, you must have your own TFTP server to backup and restore the file.

Move the cursor “>>” to **utility** and press enter.

```
-----
>   upgrade           Upgrade main software
>
>   backup            Backup system configuration
>   Restore           Restore system configuration
-----
```

## Exit

If you want to exit the system without saving, use **exit** command to quit system.

## Setup

All of the setup parameters are located in the subdirectories of setup. Move the cursor ">>" to **setup** and press enter.

---

>	mode	Switch system operation mode
>		
	shdsl	Configure SHDSL parameters
	wan	Configure WAN interface profile
	bridge	Configure transparent bridging
	vlan	Configure virtual LAN parameters
	route	Configure routing parameters
	lan	Configure LAN interface profile
	ip_share	Configure NAT/PAT parameters
	firewall	Configure Firewall parameters
	dhcp	Configure DHCP parameters
	dns_proxy	Configure DNS proxy parameters
	hostname	Configure local host name
	default	Restore factory default setting

---

## Mode

The product can act as routing mode or bridging mode. The default setting is routing mode. You can change the system operation mode by using mode command. Move the cursor ">>" to **mode** and press enter.

---

Command: setup mode <Route|Bridge>

Message: Please input the following information.

System operation mode (TAB select) <Route>: **Route**

---

## SHDSL

You can setup the SHDSL parameters by the command **shdsl**. Move the cursor ">>" to shdsl and press enter.

---

>	mode	Configure SHDSL mode
>		
	n*64	Configure SHDSL data rate
	type	Configure SHDSL annex type
	clear	Clear current CRC error count
	margin	Configure SHDSL SNR margin

---

There are two types of SHDSL mode, STU-R and STU-C. STU-R means the terminal of central office and STU-C customer premises equipment.

You can setup the data rate by the multiple of 64Kbps where n is from 0 to 32. If you configure n is 0, the product will perform as adaptive mode.

There are two types of SHDSL Annex type, Annex-A and Annex-B.

Clear command can clear CRC error count.

Generally, you cannot need to change SNR margin, which range is from 0 to 10. SNR margin is an index of line connection. You can see the actual SNR margin in STATUS SHDSL. The larger SNR margin, the better line connection. If you set SNR margin in the field as 2, the SHDSL connection will drop and reconnect when the SNR margin is lower than 2. On the other hand, the device will reduce the line rate and reconnect for better line connection.

## WAN

The router supports 8 PVC, private virtual circuit, and so you can setup eight WAN, WAN1 to WAN8. Move the cursor ">>" to **wan** and press enter. To setup WAN1, type 1.

```
-----
Command: setup wan <1~8>
Message: Please input the following information.
```

```
Interface number <1~8>: 1
-----
```

```
-----
> protocol          Link type protocol
>
> address           IP address and subnet mask
> vpi_vci           Configure VPI/VCI value
> encap             Configure encapsulation type
> qos              Configure VC QoS
> isp              Configure account name, password and idle time
> ip_type          Configure IP type in PPPoA and PPPoE
> list             WAN interface configuration
-----
```

There are four types of protocols, IPoA, EoA, PPPoA and PPPoE, which you can setup.

For dynamic IP of PPPoA and PPPoE, you do not need to setup IP address and subnet mask.

There is an unique VPI and VCI value for Internet connection supported by ISP. The range of VPI is from 0 to 255 and VCI from 0 to 65535.

There are two types of encapsulation types, VC-Mux and LLC.

You can setup virtual circuit quality of service, VC QoS, using qos command. The product supports UBR, CBR, VBR-rt and VBR-nrt. The peak cell rate can be configured from 64kbps to 2400kbps. Move the cursor to qos and press enter.

```
-----
> class            Configure QoS class
>
> pcr              Configure peak cell rate (kbps)
> scr              Configure sustainable cell rate (kbps)
> mbs              Configure max. burst size (cell)
-----
```

ISP command can configure account name, password and idle time. Idle time are from 0 minute to 300 minutes.

Most of the ISP use dynamic IP for PPP connection but some of the ISP use static IP. Configure the IP type, dynamic or fixed, via ip\_type command.

You can review the WAN interface configuration via list command.

## Bridge

You can setup the bridge parameters in bridge command. If the product is configured as a router, you do not want to setup the bridge parameters. Move the cursor ">>" to **bridge** and press enter.

```
-----
> gateway          Default gateway
>
> static           Static bridging table
-----
```

You can setup default gateway IP via gateway command.

You can setup 20 sets of static bridge in static command. After entering **static** menu, the screen will prompt as below:

```
-----
> add             Add static MAC entry
>
> delete          Delete static MAC entry
> modify          Modify static MAC entry
> list            Show static bridging table
-----
```

After enter add menu, the screen will prompt as follow

```
-----
> mac             Configure MAC address
>
> lan_port        Configure LAN interface bridging type
> wan1_port       Configure WAN1 interface bridging type
> wan2_port       Configure WAN2 interface bridging type
> wan3_port       Configure WAN3 interface bridging type
> wan4_port       Configure WAN4 interface bridging type
> wan5_port       Configure WAN5 interface bridging type
> wan6_port       Configure WAN6 interface bridging type
> wan7_port       Configure WAN7 interface bridging type
> wan8_port       Configure WAN8 interface bridging type
> list            Show static bridging table
-----
```

## VLAN

Virtual LAN (VLAN) is defined as a group of devices on one or more LANs that are configured so that they can communicate as if they were attached to the same wire, when in fact they are located on a number of different LAN segments. Because VLAN is based on logical instead of physical connections, it is extremely flexible.

The specification of VLAN function is as follow:

- The unit supports up to 8 active VLANs with shared VLAN learning (SVL) bridge out of 4096 possible VLANs specified in IEEE 802.1Q.
- Each port always belongs to a default VLAN with its port VID (PVID) as an untagged member. Also, a port can belong to multiple VLANs and be tagged members of these VLANs.
- A port must not be a tagged member of its default VLAN.
- If a non-tagged or null-VID tagged packet is received, it will be assigned with the default PVID of the ingress port.
- If the packet is tagged with non-null VID, the VID in the tag will be used.
- The look up process starts with VLAN look up to determine whether the VID is valid. If the VID is not valid, the packet will be dropped and its address will not be learned. If the VID is valid, the VID, destination address, and source address lookups are performed.
- The VID and destination address lookup determines the forwarding ports. If it fails, the packet will be broadcasted to all members of the VLAN, except the ingress port.

- Frames are sent out tagged or untagged depend on if the egress port is a tagged or untagged member of the VLAN that frames belong to.
- If VID and source address look up fails, the source address will be learned.

You can setup the Virtual LAN (VLAN) parameters in `vlan` command. The router support the implementation of VLAN-to-PVC only for bridge mode operation, i.e., the VLAN spreads over both the COE and CPE sides, where there is no layer 3 routing involved. The unit supports up to 8 active VLANs with shared VLAN learning (SVL) bridge out of 4096 possible VLANs specified in IEEE 802.1Q.

Move the cursor "`>>`" to **vlan** and press enter.

```
-----
>   mode           Trigger virtual LAN function
>
>   modify         Modify virtual LAN rule
>   pvid           Modify port default ID
>   link_mode      Modify port link type
>   list           Show VLAN configuration
-----
```

To active the VLAN function, move the cursor "`>>`" to `mode` and press enter. The products support two types of VLAN, 802.11q and Port-Based. The IEEE 802.1Q defines the operation of VLAN bridges that permit the definition, operation, and administration of VLAN topologies within a bridged LAN infrastructure. Port-Based VLANs are VLANs where the packet forwarding decision is based on the destination MAC address and its associated port.

## 802.11Q VLAN

Follow the following steps to configure 802.11q VLAN.

```
-----
Command: setup vlan active <Disable|8021Q|Port>
Message: Please input the following information.
```

Trigger VLAN function (Tab select) <Disable>: **8021Q**

To modify the VLAN rule, move the cursor "`>>`" to `modify` and press enter.

```
-----
Command: setup vlan modify <1~8> <1~4094> <string>
Message: Please input the following information.
```

```
Rule entry index <1~8>: 1
VLAN ID (Enter for default) <1>: 10
VLAN port status (Enter for default): 11001
-----
```

For each VLAN, VLAN ID is a unique number among 1~4095.

VLAN port status is a 5-digit binary number whose bit-1 location indicates the VLAN port membership in which 4MSBs and 1MSB represents LAN ports and WAN port, respectively. For example: the above setting means that the VID 20 member port includes LAN1, LAN2 and WAN. The member ports are tagged members. Use PVID command to change the member port to untagged members

To assign PVID (Port VID), move the cursor ">>" to PVID and press enter. The port index 1 to 4 represents LAN1 to LAN4 respectively and port index 5 represents WAN. VID value is the group at which you want to assign the PVID of the port. PVID is

-----  
Command: setup vlan pvid <1~5> <1~4094>  
Message: Please input the following information.

Port index <1~1>: **1**  
VID Value (Enter for default) <10>: **10**

-----  
To modify the link type of the port, move the cursor to link mode and press enter. There are two types of link: access and trunk. Trunk link will send the tagged packet form the port and access link will send untagged packet form the port. Port index 1 to 4 represents LAN1 to LAN4 respectively. According to the operation mode of the device, link type of WAN port is automatically configured. If the product operates in bridge mode, the WAN link type will be trunk, and in routing mode, access.

-----  
Command: setup vlan link\_mode <1~4> <Access|Trunk>  
Message: Please input the following information.

Port index <1~4>: **1**  
Port link type (Tab select) <Trunk>: **Access**

-----  
To view the VLAN table, move the cursor to list and press enter.

## Route

You can setup the routing parameters in route command. If the product is configured as a bridge, you do not want to setup the route parameters. Move the cursor ">>" to **route** and press enter.

-----  
> static            Configure static routing table  
>  
rip                Configure RIP tool

-----  
**If the Router is connected to more than one network, it may be necessary to set up a static route between them. A static route is a pre-determined pathway that network information must travel to reach a specific host or network.**

With Dynamic Routing, you can enable the Router to automatically adjust to physical changes in the network's layout. The Cable/DSL Firewall Router, using the RIP protocol, determines the network packets' route based on the fewest number of hops between the source and the destination. The RIP protocol regularly broadcasts routing information to other routers on the network.

You can setup 20 sets of static route in static command. After entering **static** menu, the screen will show as follow:

-----  
> add              Add static route entry  
>  
delete            Delete static route entry  
list               Show static routing table

-----  
You can add 20 sets of static route entry by using **add** command. Type the IP information of the static route including IP address, subnet mask and gateway.

You can delete the static route information via **delete** command.

You can review the static route entry by using list command.

To configure Routing Information Protocol (RIP), you can use **rip** command to setup the parameters. Move the cursor ">>" to **rip** and press enter.

```
-----
>   generic          Configure operation and auto summery mode
>
>   lan              Configure LAN interface RIP parameters
>   wan              Configure WAN interface RIP parameters
>   list             Show RIP configuration
-----
```

**Generic** command can setup RIP mode and auto summery mode.

If there are any routers in your LAN, you can configure LAN interface RIP parameters via **lan** command.

The product supports 8 PVCs and you can configure the RIP parameters of each WAN via **wan** command. Move the cursor ">>" to **wan** and press enter.

```
-----
Command: setup route rip wan <1~8> <more...>
Message: Please input the following information.
```

Active interface number <1~8>: 1

The screen will prompt as follow:

```
-----
>   attrib          Operation, authentication and Poison reverse mode
>
>   version         RIP protocol version
>   auth            Authentication code
-----
```

**Attrib** command can configure RIP mode, authentication type and Poison reverse mode.

**Version** command can configure RIP protocol version.

**Auth** command can configure authentication code.

You can review the list of RIP parameters via **list** command.

## LAN

LAN interface parameters can be configured LAN IP address, subnet mask and NAT network type.

```
-----
>   address         LAN IP address and subnet mask
>
>   attrib          NAT network type
-----
```

## IP share

You can configure Network Address Translation (NAT), Port Address Translation (PAT) and Demilitarized Zone parameters in **ip\_share** menu. Move the cursor ">>" to **ip\_share** then press enter.



```

-----
>   nat           Configure network address translation
>
>   pat           Configure port address translation
>   dmz          Configure DMZ host function
-----

```

NAT (Network Address Translation) is the translation of an Internet Protocol address (IP address) used within one network to a different IP address known within another network. One network is designated the inside network and the other is the outside. Typically, a company maps its local inside network addresses to one or more global outside IP addresses and reverse the global IP addresses of incoming packets back into local IP addresses. This ensure security since each outgoing or incoming request must go through a translation process, that also offers the opportunity to qualify or authenticate the request or match it to a previous request. NAT also conserves on the number of global IP addresses that a company needs and lets the company to use a single IP address of its communication in the Internet world.

DMZ (demilitarized zone) is a computer host or small network inserted as a “neutral zone” between a company private network and the outside public network. It prevents outside users from getting direct access to a server that has company private data.

## NAT

You can configure NAT parameters in **nat** menu.

```

-----
>   virtual       Virtual IP address pool
>
>   global       Global IP address pool
>   fixed        Fixed IP address mapping
-----

```

The **virtual** menu contains range of virtual IP address, delete virtual IP address and show virtual IP address.

```

-----
>   range        Edit virtual IP address pool
>
>   delete       Delete virtual IP address pool
>   list         Show virtual IP address pool
-----

```

You can create five virtual IP address pool range in **range** command.

```
-----
Command: setup ip_share nat virtual range <1~5> <ip> <1~253>
```

Message: Please input the following information.

NAT local address range entry number <1~5>: **1**

Base address: **192.168.0.2**

Number of address: **49**

You can delete virtual IP address range- from 1 to 5- by using **delete** command.

You can view the virtual IP address range via **list** command.

To setup global IP address pool, move the cursor “>>” to **global** command and press enter.

---

>	range	Edit global IP address pool
>	interface	Bind address pool to specific interface
	delete	Delete global IP address pool
	list	Show global IP address pool

---

You can create five global IP address pool range via **range** command.

---

Command: setup ip\_share nat global range <1~5> <ip> <1~253>  
 Message: Please input the following information.

NAT global IP address range entry number <1~5>: **1**  
 Base address: **122.22.22.2**  
 Number of address: **3**

---

After configuration global IP address range, You can bind address pool to specific interface via bind command.

---

Command: setup ip\_share nat global interface <1~5> <1~8>  
 Message: Please input the following information.

NAT global address range entry number <1~5>: **1**  
 Active interface number <1~8>: **1**

---

You can delete global IP address range- from 1 to 5- by using **delete** command.

You can view the global IP address range via **list** command.

To modify fixed IP address mapping, move the cursor ">>" to **fixed** command and press enter.

---

>	modify	Modify fixed NAT mapping
>	interface	Bind address pair to specific interface
	delete	Delete fixed NAT mapping
	list	Show fixed IP address mapping

---

You can create up to 10 fixed NAT mapping entry via **range** command.

---

Command: setup ip\_share nat fixed modify <1~10> <ip> <ip>  
 Message: Please input the following information.

Fixed NAT mapping entry number <1~10>: **1**  
 Local address: **192.168.0.250**  
 Global address: **122.22.22.2**

---

After configuration fixed IP address entry, you can bind the entry to specific interface via **interface** command.

-----  
Command: setup ip\_share nat fixed interface <1~5> <1~8>  
Message: Please input the following information.

Fixed NAT mapping entry number <1~5>: **1**  
Active interface number (Enter for default) <1~8>: **1**

-----  
You can delete fixed NAT mapping entry- from 1 to 5- by using **delete** command.

You can view the fixed NAT mapping entry via **list** command.

## PAT

To configure Port Address Translation, move the cursor ">>" to **pat** and press enter.

-----  
> clear Clear virtual server mapping  
>  
modify Modify virtual server mapping  
list Show virtual server mapping pool  
-----

You can delete virtual server mapping entry- from 1 to 10- by using **clear** command.

You can create up to 10 virtual server mapping entry via **modify** command.

-----  
Command: setup ip\_share pat modify <1~10>  
Message: Please input the following information.

Virtual server entry number <1~10>: **1**

-----  
After key in enter, the screen will prompt as below.

-----  
> interface Active interface  
>  
port TCP/UDP port number  
server Host IP address and port number  
protocol Transport protocol  
name Service name  
begin The schedule of beginning time  
end The schedule of ending time  
-----

Set the active interface number via **interface** command.

You can configure the global port number by using **port** command.

The local server, host, IP address and port number are configured via **server** command.

The authorized access protocol is setup via **protocol** command.

**Name** command can be used to configure the service name of the host server.

**Begin** and **end** command is used to setup the local server schedule to access.

You can view the fixed NAT mapping entry via **list** command.

## DMZ

To setup demilitarized zone, move the cursor ">>" to **dmz** and press enter.

```
-----
>   active           Tigger DMZ host function
>
>   address          Configure virtual IP address and interface
-----
```

You can enable the demilitarized zone via **active** command.

After enabling the DMZ, shift the cursor to **address** and press enter.

```
-----
Command: setup ip_share dmz address <ip> <1~10>
Message: Please input the following information.
```

```
Virtual IP address: 192.168.0.251
Active interface number (Enter for default) <1>: 1
-----
```

## Firewall

The product supports advanced firewall. To setup the advanced firewall, you can use **firewall** to configure.

```
-----
>   Level           Configure firewall security level
>
>   pkt_filter      Configure packet filter
>   dos_protectio   Configure DoS protection
>   n
-----
```

There are three level of firewall which you can setup in this product.

Level one, basic, only enables the NAT firewall and the remote management security. The NAT firewall will take effect if NAT function is enabled. The remote management security is default to block any WAN side connection to the device. Non-empty legal IP pool in ADMIN will block all remote management connection except those IPs specified in the pool.

Level two, automatic, enables basic firewall security, all DoS protection, and the SPI filter function.

Level three, advanced, is an advanced level of firewall where user can determine the security level for special purpose, environment, and applications by configuring the DoS protection and defining an extra packet filter with higher priority than the default SPI filter. Note that, an improper filter policy may degrade the capability of the firewall and/or even block the normal network traffic.

The firewall security level can configure via **level** command.

## Packet Filtering

Packet filtering function can be configured by **pkt\_filter** command. Move the cursor to **pkt\_filter** and press enter.

---

>	active	Tigger packet filtering function
>		
	add	Add packet filtering rule
	delete	Delete packet filtering rule
	modify	Modify packet filtering rule
	exchange	Exchange the filtering rule
	list	Show packet filtering table

---

To enable the packet filtering function, you can use **active** command.

Add the packet filtering rule via **add** command.

---

>	protocol	Configure protocol type
>		
	direction	Configure direction mode
	src_ip	Configure source IP parameter
	dest_ip	Configure destination IP parameter
	port	Configure port parameter (TCP and UDP only)
	tcp_flag	Configure TCP flag (TCP only)
	icmp_type	Configure ICMP flag (ICMP only)
	description	Packet filtering rule description
	enable	Enable the packet filtering rule
	begin	The schedule of beginning time
	end	The schedule of ending time
	action	Configure action mode

---

## DoS Protection

DoS protection parameters can be configured in **dos\_protection** menu. Move the cursor to **dos\_protection** and press enter.

---

>	syn_flood	Enable protection SYN flood attack
>		
	icmp_flood	Enable protection ICMP flood attack
	udp_flood	Enable protection UDP flood attack
	ping_death	Enable protection ping of death attack
	land_attack	Enable protection land attack
	ip_spooff	Enable protection IP spoofing attack
	smurf_attack	Enable protection smurf attack
	fragggle_attack	Enable protection fraggle attack

---

A SYN flood attack attempts to slow your network by requesting new connections but not completing the process to open the connection. Once the buffer for these pending connections is full a server will not accept any more connections and will be unresponsive.

ICMP Flood: A sender transmits a volume of ICMP request packets to cause all CPU resources to be consumed serving the phony requests.

UDP Flood: A sender transmits a volume of requests for UDP diagnostic services which cause all CPU resources to be consumed serving the phony requests.

A ping of death attack attempts to crash your system by sending a fragmented packet, when reconstructed is larger than the maximum allowable size. Other known variants of the ping of death include teardrop, bonk and nestea.

A land attack is an attempt to slow your network down by sending a packet with identical source and destination addresses originating from your network.

IP Spoofing is a method of masking the identity of an intrusion by making it appear that the traffic came from a different computer. This is used by intruders to keep their anonymity and can be used in a Denial of Service attack.

A smurf attack involves two systems. The attacker sends a packet containing a ICMP echo request (ping) to the network address of one system. This system is known as the amplifier. The return address of the ping has been faked (spoofed) to appear to come from a machine on another network (the victim). The victim is then flooded with responses to the ping. As many responses are generated for only one attack, the attacker is able use many amplifiers on the same victim.

## DHCP

Dynamic Host Configuration Protocol (DHCP) is a communication protocol that lets network administrators to manage centrally and automate the assignment of Internet Protocol (IP) addresses in an organization's network. Using the Internet Protocol, each machine that can connect to the Internet needs a unique IP address. When an organization sets up its computer users with a connection to the Internet, an IP address must be assigned to each machine.

Without DHCP, the IP address must be entered manually at each computer. If computers move to another location in another part of the network, a new IP address must be entered. DHCP lets a network administrator to supervise and distribute IP addresses from a central point and automatically sends a new IP address when a computer is plugged into a different place in the network.

To configure DHCP server, move the cursor to **dhcp** and press enter.

```
-----
> generic          Configure generic DHCP parameters
>
> fixed           Configure fixed host IP address list
list              Show DHCP configuration
-----
```

The generic DHCP parameters can be configured via **generic** command.

```
-----
> active          Tigger DHCP function
>
gateway          Default gateway for DHCP client
netmask          Subnet mask for DHCP client
ip_range         Dynamic assigned IP address range
lease_time       Configure max lease time
name_server1     Domain name server1
name_server2     Domain name server2
name_server3     Domain name server3
-----
```

Active the DHCP function with **active** command.

Set the default gateway via **gateway** command.

The subnet mask for DHCP client is configured by **netmask** command.

**ip\_range** command is to configure dynamic assigned IP address range.

The dynamic IP maximum lease time is configured by **lease\_time** command.

You can setup 3 domain name servers via **name\_server** commands.

Fixed Host IP Address list are setup via **fixed** command.

```
-----  
> add Add a fixed host entry  
>  
> delete Delete a fixed host entry  
-----
```

You can view the DHCP configuration via **list** command.

## DNS proxy

You can setup three DNS servers in the product. The number 2 and 3 DNS servers are option. Move cursor ">>" to **dns\_proxy** and press enter.

```
-----  
Command: setup dns_proxy <IP> [IP] [IP]  
Message: Please input the following information.
```

```
DNS server 1 (ENTER for default) <168.95.1.1>: 10.0.10.1  
DNS server 2: 10.10.10.1  
DNS server 3:  
-----
```

## Host name

Enter local host name via **hostname** command. Move cursor ">>" to **hostname** and press enter.

```
-----  
Command: setup hostname <name>  
Message: Please input the following information.
```

```
Local hostname (ENTER for default) <SOHO>: test  
-----
```

## Default

If you want to restore factory default, first move the cursor ">>" to **default** and then press enter.

```
-----  
Command: setup default <name>  
Message: Please input the following information.
```

```
Are you sure? (Y/N): y  
-----
```