



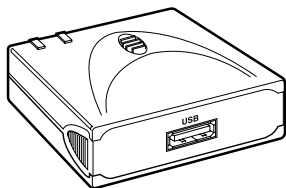
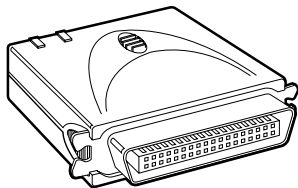
© Copyright 2004. Black Box Corporation. All rights reserved.

---

1000 Park Drive • Lawrence, PA 15055-1018 • 724-746-5500 • Fax 724-746-0746



**Pure Networking 802.11b  
10/100 USB Print Server  
Pure Networking 802.11b  
10/100 Parallel Print Server  
Quick Install Guide**



---

**CUSTOMER SUPPORT INFORMATION**

Order **toll-free** in the U.S.: Call **877-877-BBOX** (outside U.S. call **724-746-5500**)

FREE technical support 24 hours a day, 7 days a week: Call **724-746-5500** or fax **724-746-0746**

Mailing address: **Black Box Corporation**, 1000 Park Drive, Lawrence, PA 15055-1018

Web site: [www.blackbox.com](http://www.blackbox.com) • E-mail: [info@blackbox.com](mailto:info@blackbox.com)



**FEDERAL COMMUNICATIONS COMMISSION  
AND  
INDUSTRY CANADA  
RADIO FREQUENCY INTERFERENCE STATEMENTS**

This equipment generates, uses, and can radiate radio-frequency energy, and if not installed and used properly, that is, in strict accordance with the manufacturer's instructions, may cause interference to radio communication. It has been tested and found to comply with the limits for a Class A computing device in accordance with the specifications in Subpart B of Part 15 of FCC rules, which are designed to provide reasonable protection against such interference when the equipment is operated in a commercial environment. Operation of this equipment in a residential area is likely to cause interference, in which case the user at his own expense will be required to take whatever measures may be necessary to correct the interference.

Changes or modifications not expressly approved by the party responsible for compliance could void the user's authority to operate the equipment.

*This digital apparatus does not exceed the Class A limits for radio noise emission from digital apparatus set out in the Radio Interference Regulation of Industry Canada.*

*Le présent appareil numérique n'émet pas de bruits radioélectriques dépassant les limites applicables aux appareils numériques de classe A prescrites dans le Règlement sur le brouillage radioélectrique publié par Industrie Canada.*

**NORMAS OFICIALES MEXICANAS (NOM)  
ELECTRICAL SAFETY STATEMENT**

**INSTRUCCIONES DE SEGURIDAD**

1. Todas las instrucciones de seguridad y operación deberán ser leídas antes de que el aparato eléctrico sea operado.
2. Las instrucciones de seguridad y operación deberán ser guardadas para referencia futura.
3. Todas las advertencias en el aparato eléctrico y en sus instrucciones de operación deben ser respetadas.
4. Todas las instrucciones de operación y uso deben ser seguidas.
5. El aparato eléctrico no deberá ser usado cerca del agua—por ejemplo, cerca de la tina de baño, lavabo, sótano mojado o cerca de una alberca, etc..
6. El aparato eléctrico debe ser usado únicamente con carritos o pedestales que sean recomendados por el fabricante.
7. El aparato eléctrico debe ser montado a la pared o al techo sólo como sea recomendado por el fabricante.
8. Servicio—El usuario no debe intentar dar servicio al equipo eléctrico más allá a lo descrito en las instrucciones de operación. Todo otro servicio deberá ser referido a personal de servicio calificado.
9. El aparato eléctrico debe ser situado de tal manera que su posición no interfiera su uso. La colocación del aparato eléctrico sobre una cama, sofá, alfombra o superficie similar puede bloquea la ventilación, no se debe colocar en libreros o gabinetes que impidan el flujo de aire por los orificios de ventilación.

10. El equipo eléctrico deber ser situado fuera del alcance de fuentes de calor como radiadores, registros de calor, estufas u otros aparatos (incluyendo amplificadores) que producen calor.
11. El aparato eléctrico deberá ser connectado a una fuente de poder sólo del tipo descrito en el instructivo de operación, o como se indique en el aparato.
12. Precaución debe ser tomada de tal manera que la tierra fisica y la polarización del equipo no sea eliminada.
13. Los cables de la fuente de poder deben ser guiados de tal manera que no sean pisados ni pellizcados por objetos colocados sobre o contra ellos, poniendo particular atención a los contactos y receptáculos donde salen del aparato.
14. El equipo eléctrico debe ser limpiado únicamente de acuerdo a las recomendaciones del fabricante.
15. En caso de existir, una antena externa deberá ser localizada lejos de las líneas de energia.
16. El cable de corriente deberá ser desconectado del cuando el equipo no sea usado por un largo periodo de tiempo.
17. Cuidado debe ser tomado de tal manera que objetos liquidos no sean derramados sobre la cubierta u orificios de ventilación.
18. Servicio por personal calificado deberá ser provisto cuando:
  - A: El cable de poder o el contacto ha sido dañado; u
  - B: Objetos han caído o líquido ha sido derramado dentro del aparato; o
  - C: El aparato ha sido expuesto a la lluvia; o
  - D: El aparato parece no operar normalmente o muestra un cambio en su desempeño; o
  - E: El aparato ha sido tirado o su cubierta ha sido dañada.

**TRADEMARKS USED IN THIS MANUAL**

AppleTalk and Mac OS are registered trademarks of Apple Computer, Inc.

Linux is a registered trademark of Linus Torvalds.

Microsoft, Windows, and Windows NT are either registered trademarks or trademarks of Microsoft Corporation in the United States and/or other countries.

Novell and NetWare are registered trademarks, and IPX is a trademark, of Novell, Inc.

UNIX is a registered trademark of UNIX System Laboratories, Inc.

*Any other trademarks mentioned in this manual are acknowledged to be the property of the trademark owners.*

# Contents

<b>Chapter</b>	<b>Page</b>
1. Introduction . . . . .	6
1.1 Overview . . . . .	6
1.2 What's Included . . . . .	7
2. Hardware Installation Procedure . . . . .	8
3. Administrator Installation and Setup . . . . .	9
4. Client Installation and Setup . . . . .	21
5. Windows Add Printer Procedure . . . . .	26



# 1. Introduction

## 1.1 Overview

The Pure Networking 802.11b 10/100 USB Print Server or the Pure Networking 802.11b 10/100 Parallel Print Server allows your printer to become a shared device on the network. It offers printing flexibility and manageability on your Local Area Network with minimum setup and maintenance.

The print server supports IPX™, TCP/IP, AppleTalk®, and NetBEUI protocols. It's ideal for common operating systems such as Windows® peer-to-peer printing (Windows 95/98/Me/2000/XP and Windows NT®), Microsoft® Windows 2000 server-based printing, Novell® NetWare® 3.x/4.x/5.x, UNIX®, Linux®, and Mac OS®.

With the help of the Installation Wizard, you can instantly complete the settings for your printing environment and start using the print server.

This guide is used for quick installation on Windows peer-to-peer printing environments and Novell NetWare network environments. If you have a simple network, you can follow the step-by-step procedures described in this guide to complete the installation. If you have any problems, please refer to the users' manual on the included CD-ROM for more detailed information.

## **1.2 What's Included**

Your package should contain the following items. If anything is missing or damaged, please contact Black Box at 724-746-5500.

- (1) Pure Networking 802.11b 10/100 USB Print Server (LEP0001A) or (1) Pure Networking 802.11b 10/100 Parallel Print Server (LEP0000A)
- (1) Power adapter
- (1) CD-ROM including all the software utilities, drivers, and a users' manual
- This Quick Installation Guide

## 2. Hardware Installation Procedure

1. Unpack the print server package and verify that all the items listed in **Chapter 1** are included.
2. Connect the print server to the printer you want to share on the network.
3. Connect the power adapter to the print server.
4. The print server will perform the Power-On-Self-Test (POST) after it is powered on. During the POST, the status LED will flash. When the status LED stops flashing, the print server is ready.

### CAUTION

You *must* use the power adapter shipped with the print server. Do *not* use any other power adapter from other sources, or your equipment might be damaged!

## 3. Administrator Installation and Setup

The Administrator Installation Program executes a wizard-driven procedure that performs the following tasks:

- Installs all necessary utilities and drivers in the administrator's PC (including the client utilities).
- Prompts you to set up the print server (including the print server name and network protocols).
- Adds the print server's network port to the administrator's PC.

After the installation, perform the standard **Add Printer** procedure and choose the print server's **Network Port** in the **Available Ports** list. You can test printing from the Admin PC to the print server as your local printer.

The Administrator installation can be performed on Windows 95/98/Me/2000/XP or Windows NT with the same user interface. Before the installation, verify that your network protocol is installed on your PC (TCP/IP, IPX, and/or NetBEUI).

1. Insert the CD included with the print server into your CD-ROM drive. The **Autorun.exe** program should be executed automatically by Windows. If not, run Autorun.exe manually from the CD-ROM drive's root directory.
2. The Installation Manager displays on the screen as shown in Figure 1.

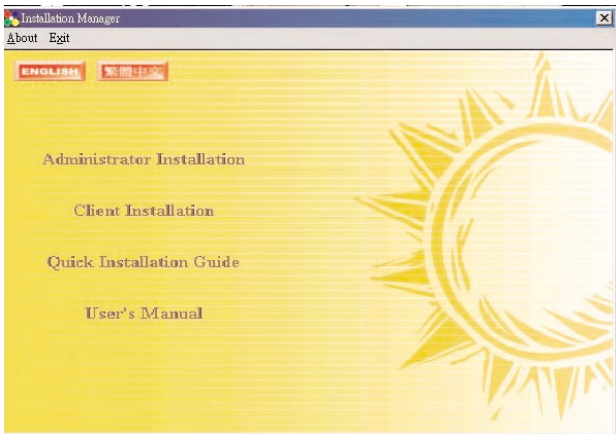


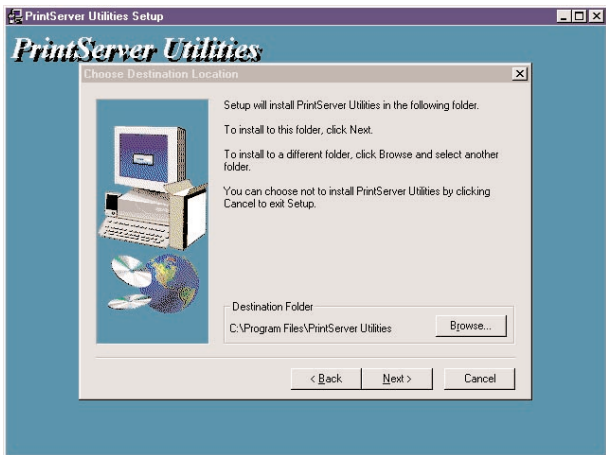
Figure 1. Installation Manager.

3. Click on **Administrator Installation**, and the Utilities Setup window will appear. See Figure 2.



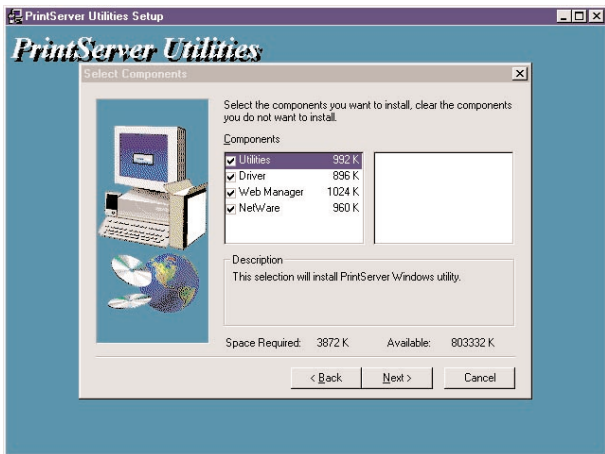
**Figure 2. Utilities Setup window.**

4. Click on **Next** and specify the destination folder where the utilities will be installed. See Figure 3.



**Figure 3. Choosing the destination folder.**

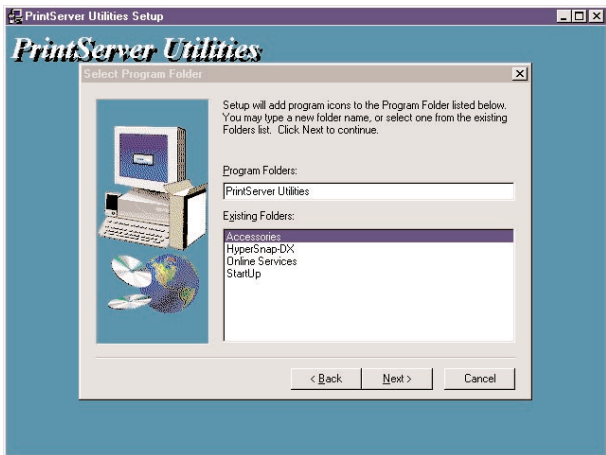
5. Click on **Next** and select the components you want to install. We recommend that you install all provided components. See Figure 4.



**Figure 4. Installing the components.**

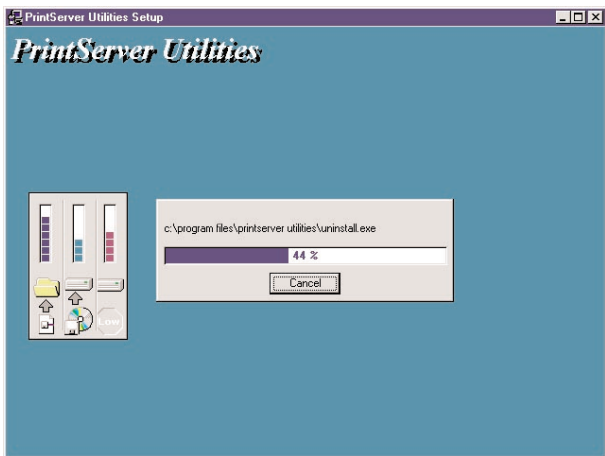


6. Click on **Next** and specify the program folder where the program icons will be added. See Figure 5.



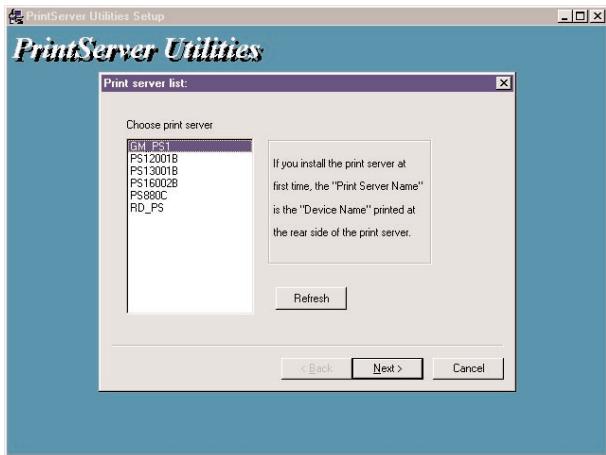
**Figure 5. Adding the program icons to a folder.**

7. Click on **Next** to start the installation. See Figure 6.



**Figure 6. Installation in progress.**

8. After a few minutes, the program will finish installing all the utilities and drivers you selected. Once the installation phase is complete, prepare to configure the print server. To do this, click on **Next** (this screen not shown) and the Choose Print Server dialog box will display as shown in Figure 7.

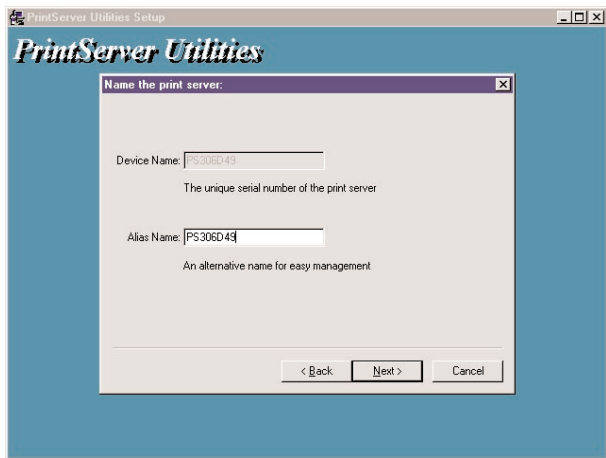


**Figure 7. Choose Print Server dialog box.**

## **NOTE**

If this is the first time you configure the print server, the Print Server name will be the same as the Device Name printed on the rear side of the print server.

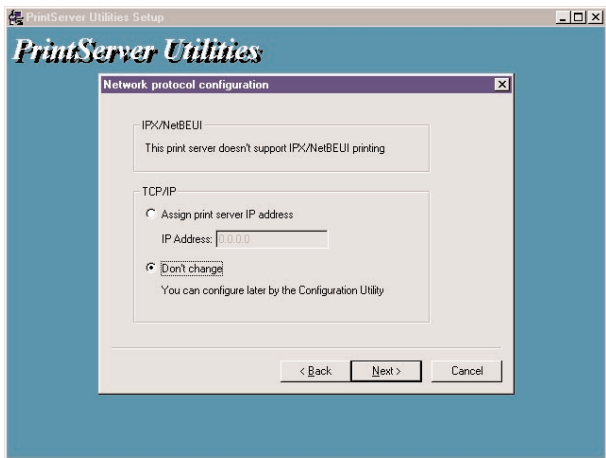
9. Click on **Next**, and the Name the Print Server dialog box will appear as shown in Figure 8.



**Figure 8. Name the Print Server dialog box.**

Assign a meaningful name for the print server. This name will also be the identifier for the peer-to-peer printing (PTPP).

10. Click on **Next** to configure the network protocol in the screen shown in Figure 9.



**Figure 9. Configuring the network protocol.**

In the system default, IPX and NetBEUI protocols are enabled. For TCP/IP, you can either assign a fixed IP address for the print server or configure it later by the configuration utility.

- Click on **Next**, and the Add Network Port screen appears (see Figure 10). The Print Server setup is complete. If you click on **Finish**, the system will add the print server to your PC.

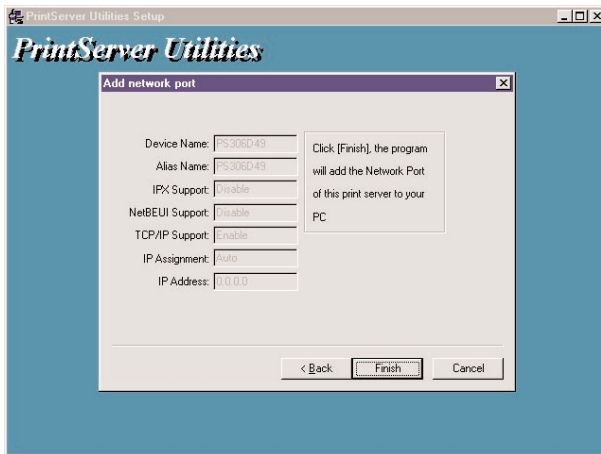
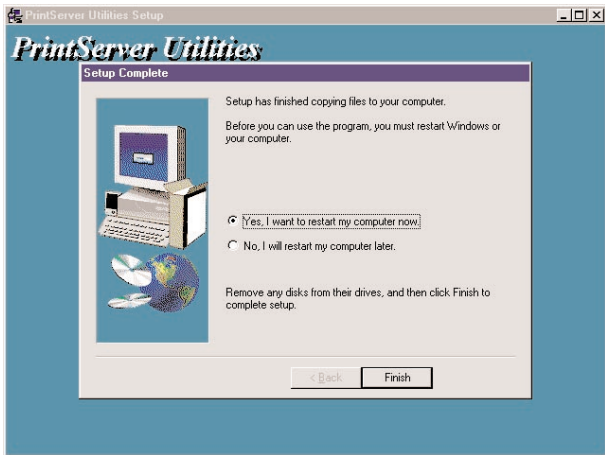


Figure 10. Add Network Port.

12. Finally, the **Installation Complete** window displays to indicate that the Administrator Installation procedure is finished. Click on **Finish** to restart your computer.



**Figure 11. Installation Complete window.**

If you want to print from the administrator's PC to the print server, perform the Windows standard **Add Printer** procedure (see **Chapter 5**).

## 4. Client Installation and Setup

The Client Installation Program is a wizard-driven procedure that will perform the following tasks.

- Install the client utilities and drivers into your PC.
- Automatically add all network ports to your PC.

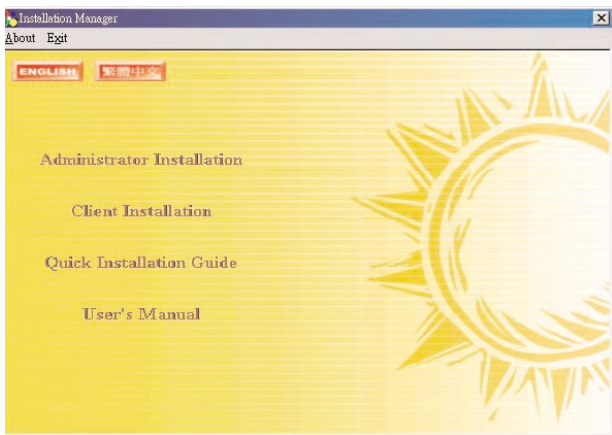
The network port driver supports network protocol autodetection. It will automatically select an available network protocol (NetBEUI, IPX, or TCP/IP) on the client computer to connect to the print server.

Since both the print server and the client side support multiprotocols, the configuration process on the client side is fully automatic.

The Client Installation can be performed in Windows 95/98/Me/2000/XP with the same user interface. Before installation, please confirm that your PC has already connected to the network and installed at least one network protocol.



1. Insert the CD included with the print server into your CD-ROM drive. The Autorun.exe program should be executed automatically by Windows. If not, run Autorun.exe manually from the CD-ROM drive's root directory.
2. The Installation Manager will display as shown in Figure 12.



**Figure 12. Installation Manager.**

3. Click on **Client Installation** and the Utilities Setup window will appear. See Figure 13.

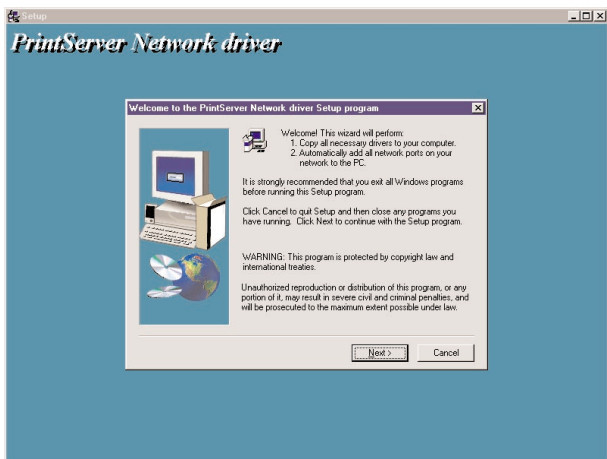


Figure 13. Utilities Setup window.

4. Click on **Next** and specify the destination folder where the utilities will be installed. See Figure 14.

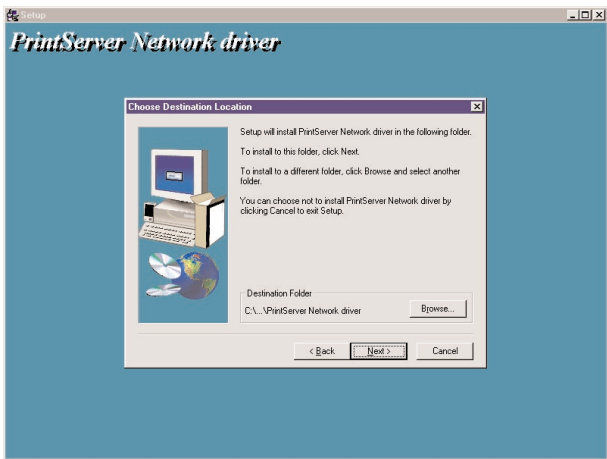
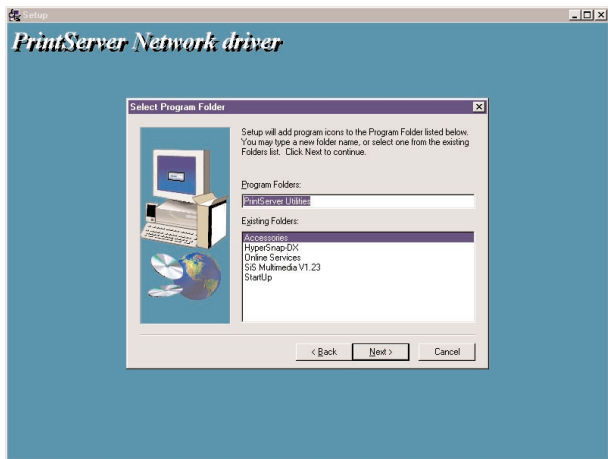


Figure 14. Choosing the destination folder.

- Using the drop-down menu, select the folder where the program icons will be added. (See Figure 15.) Click on **Next**.



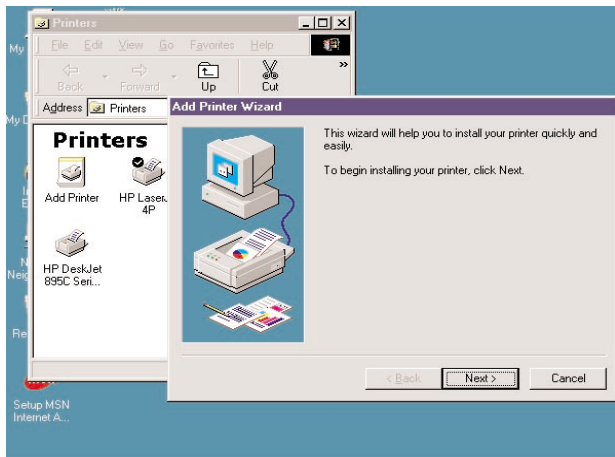
**Figure 15.** Add the program icons.

After the installation, perform the standard **Add Printer** procedure (see **Chapter 5**) and choose the print server's **Network Port** in the **Available Ports** list. Test printing from the PC to the print server as your local printer.

## 5. Windows Add Printer Procedure

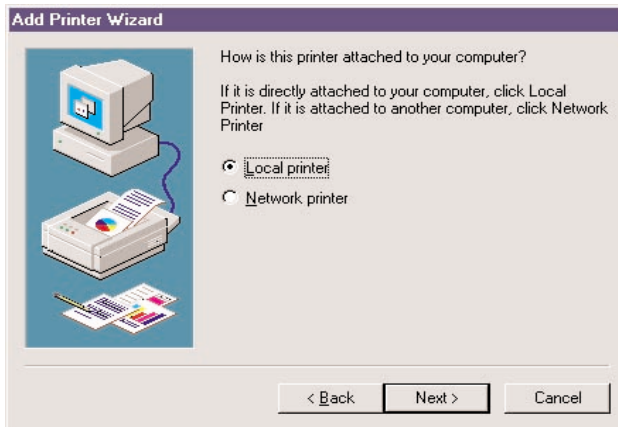
After adding the print server's network port to your PC using the Administrator or Client Installation Program, follow the procedure described below to add a printer to Windows.

1. Click on the **Start** button. Choose **Setting**, then **Printers**. The Add New Printer icon appears.
2. Double-click on **Add New Printer**. The Add Printer Wizard screen appears. (See Figure 16.) Click on **Next** to continue.



**Figure 16. The Add Printer Wizard screen.**

### 3. Select **Local printer**, then click **Next**.



**Figure 17. Select the desired printer.**

4. Select a suitable printer manufacturer and model, then click on **Next**.

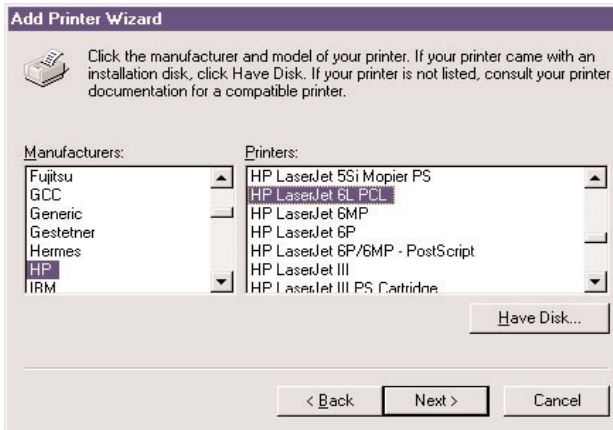
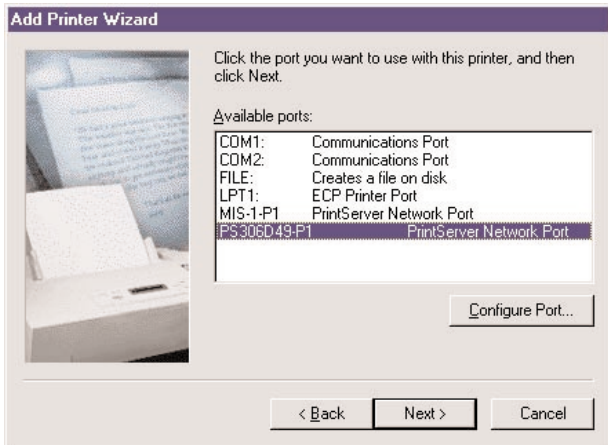


Figure 18. Choose the printer manufacturer.

5. Choose the print server's network port that was created by the Administrator Installation Procedure and click on **Next**.





**Figure 19. Select the print server's network port.**

6. Complete the rest of the questions to finish the network printer setup.

Now you can start to print from this administrator's PC to the print server.