

User's Manual

USB Bluetooth Dongle

Briefing

- Note: Please do not insert USB Bluetooth Adaptor before installation of software.
- Screenshots have been taken in Windows XP, and will slightly differ to Windows ME or Windows 98SE. See Notes for Win 98SE/ME/2000
- WinME and Win98SE may require the original Installation CD.
Some computers have the original setup directory placed on their computer when the software was installed.

Installation

STEP 1 Software Installation

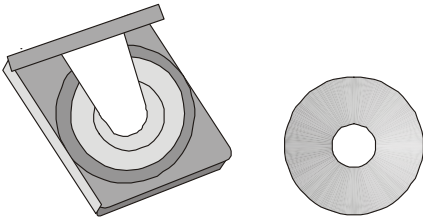
1. Restart Computer

If your computer is on already, please restart before beginning installation.

2. Insert USB Bluetooth Dongle Software CD

Please insert the USB Bluetooth Dongle software/application CD-Rom into your CD-Rom Drive.

The USB Bluetooth Adaptor is also referred to as a USB Bluetooth Dongle.



3. Welcome

The software will automatically begin.

The window welcomes you to the InstallShield Wizard for Bluetooth Software.

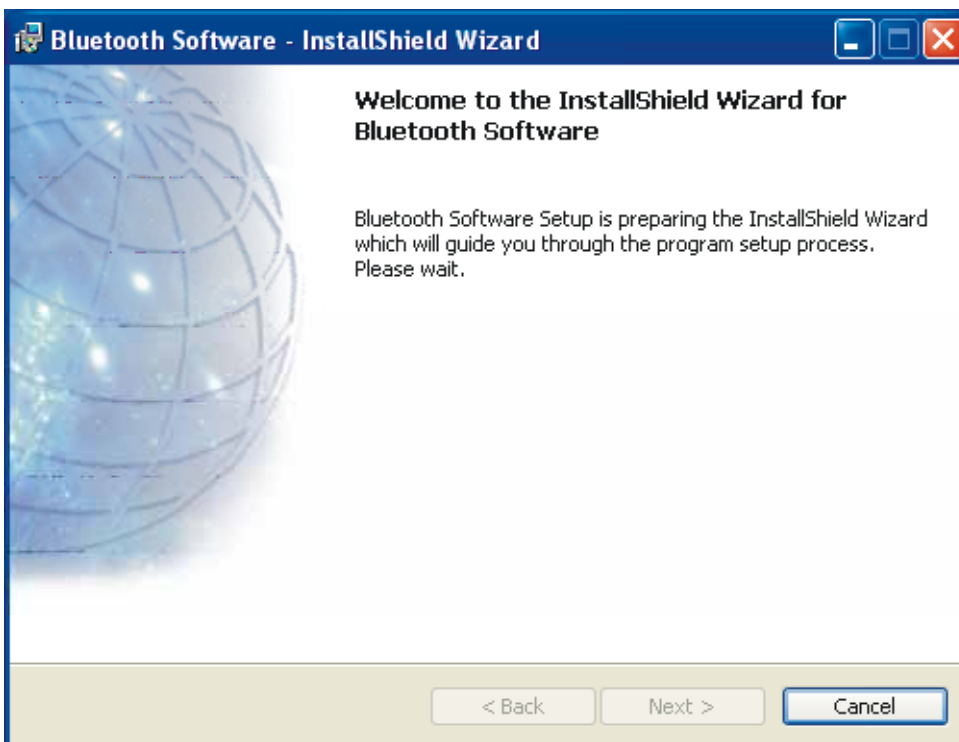


Figure 1.1 Welcome to InstallShield Wizard

4. Ready to Begin

The software is ready to begin installation for the WIDCOMM Bluetooth Software. To continue, click

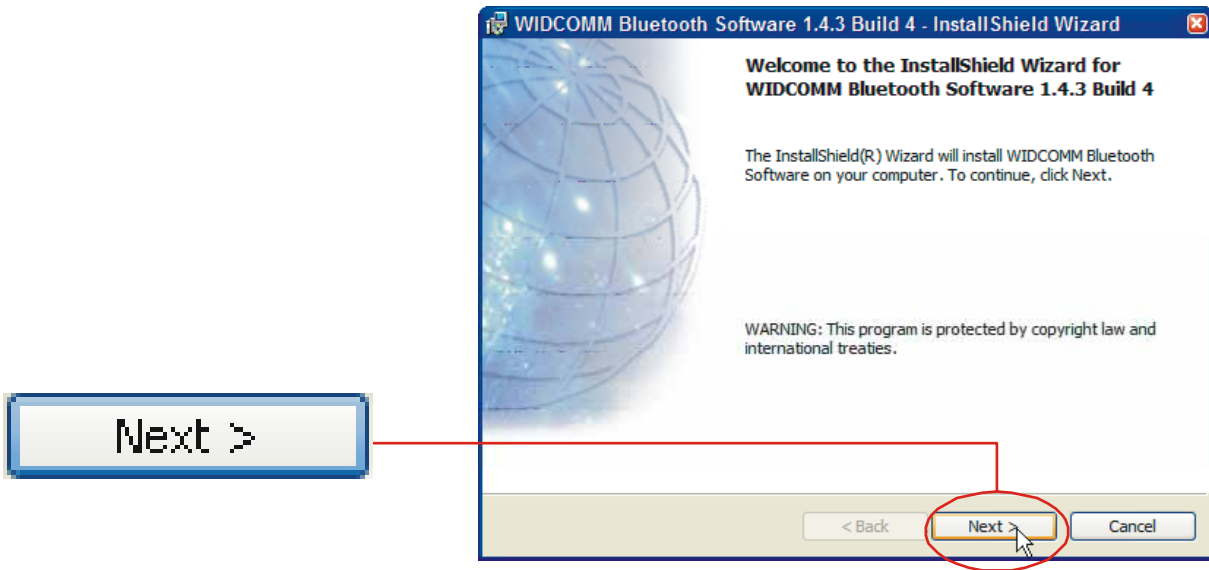
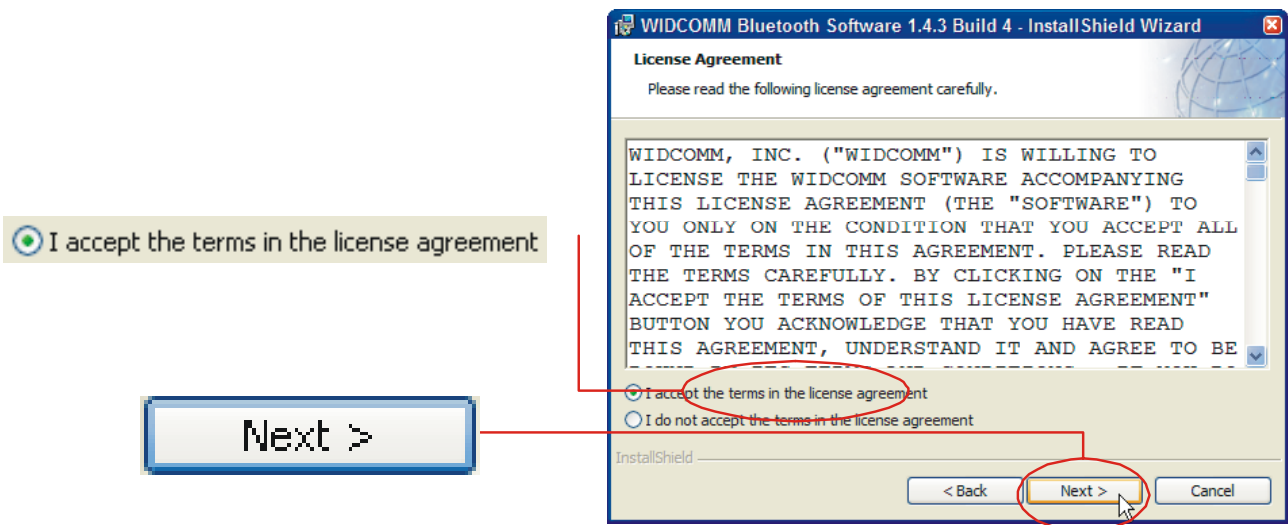


Figure 1.2 WIDCOMM Software InstallShield Wizard

5. License Agreement

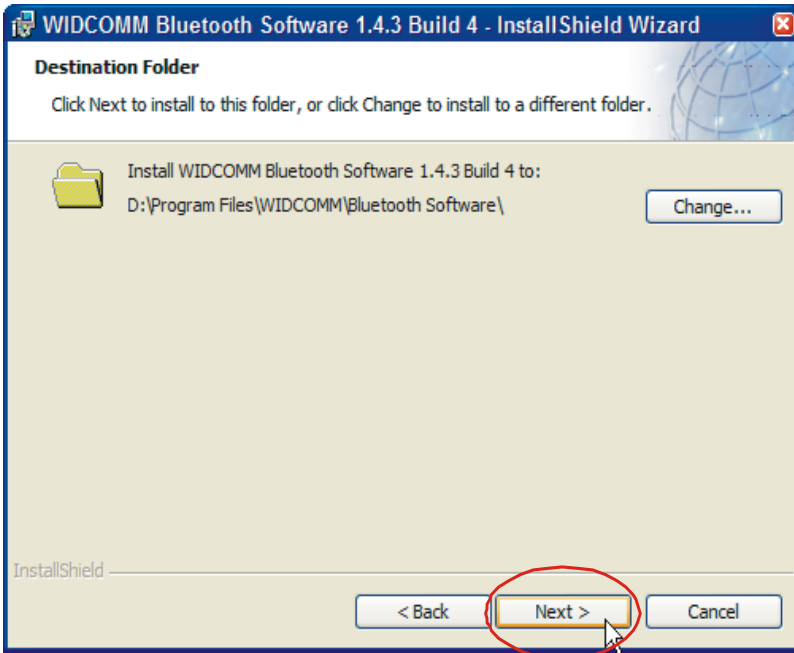
Read the license agreement, If you accept, select the check button.



To continue, click

6. Install Location

If you wish to select another location where the software will be installed, Click and select or enter a new location. Note: The default location is recommended.



To continue, click

7. Install

You are now ready to install.

To continue, click

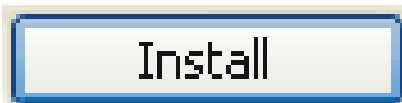
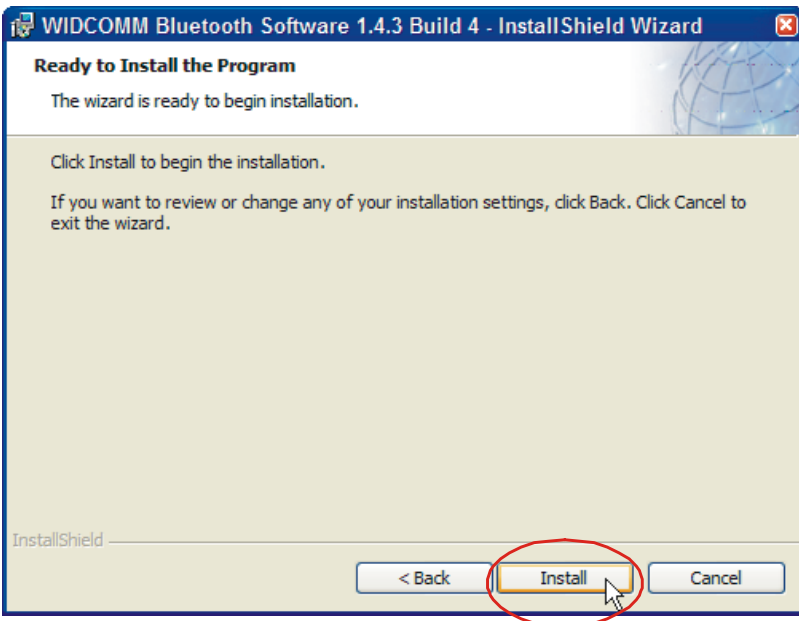


Figure 1.5 Ready to Install

8. Copying...

The installation process will now begin.

Please wait while files are being copied to your computer.

The progress bar (see Figure 1.6) will indicate the portion that has been completed.

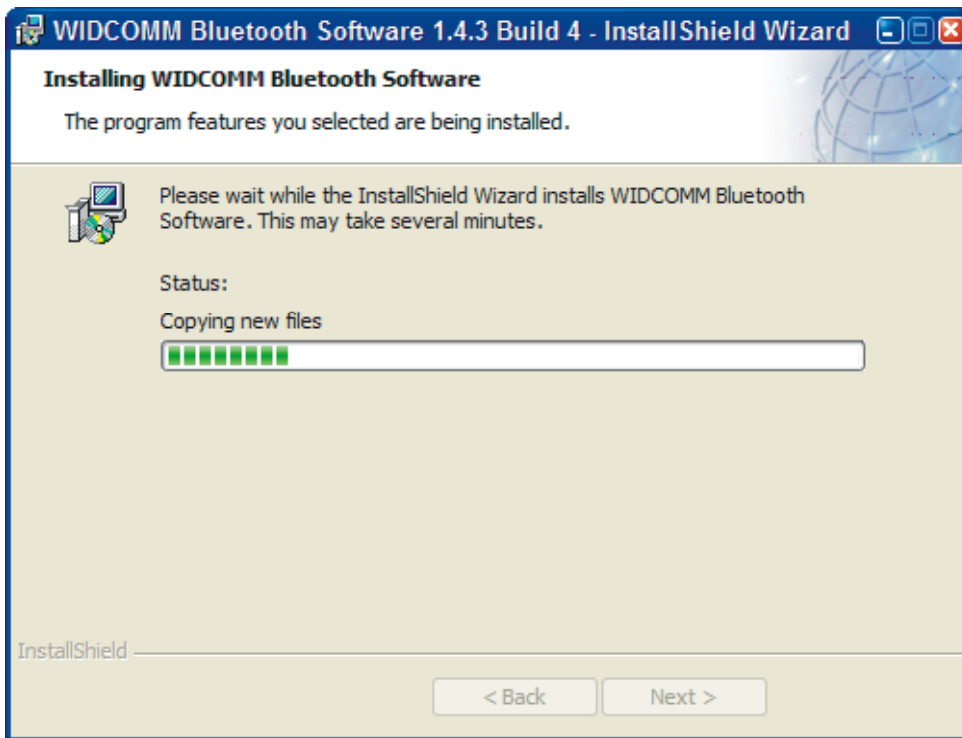


Figure 1.6 Installation Progress

9. Driver Signature

(Windows XP only)

You will be prompted with a Driver Signature Notice.

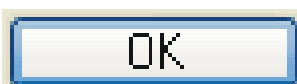
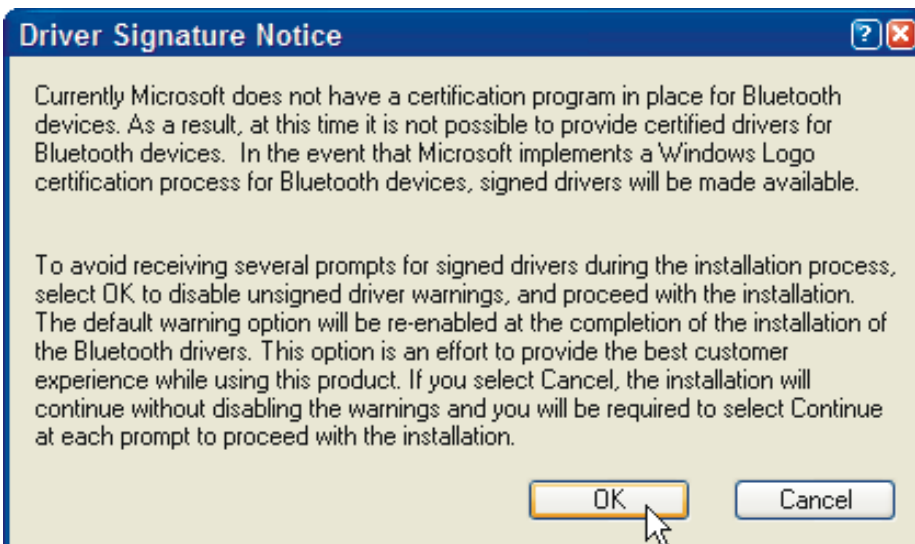


Figure 1.7 Driver Signature Notice

To continue, click

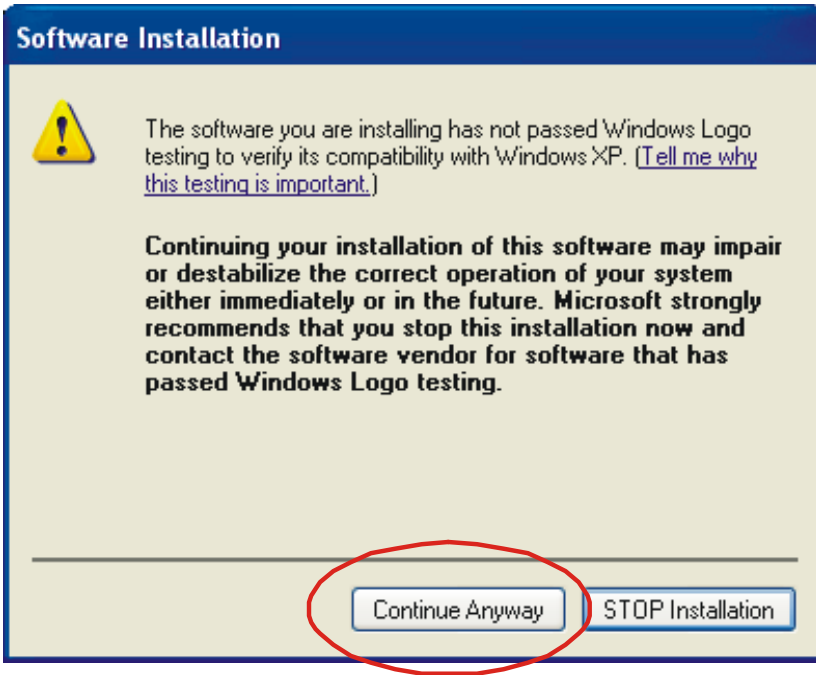


Figure 1.8 Compatibility

Note: If you are prompted with Software Installation prompt. This indicates that the Bluetooth software has not been tested by Microsoft for the Windows Logo Test. As with most companies, we have tested the software and recommend that you click

10. Device Not Found

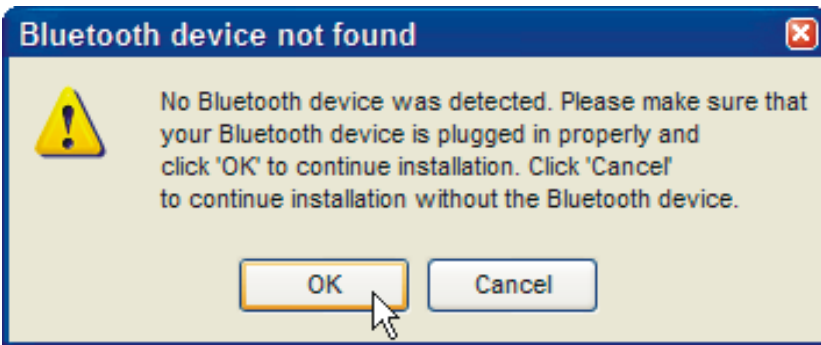


Figure 1.9 Bluetooth device not found

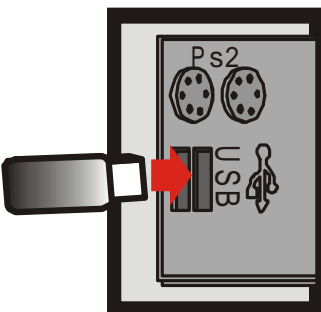


Figure 2.1 Desktop USB port example

At the Bluetooth device not found prompt (see Figure 1.9), directly plug the USB Bluetooth Dongle into an available USB port. See Figure 2.1 for insertion example. (See section USB? for details on USB)

Please continue with STEP 2- Hardware Installation.

STEP 2 Hardware Installation

11. If you have successfully inserted the USB Bluetooth Dongle please continue.

The green LED (light) on the device will be lit, if USB Bluetooth Adaptor is successfully inserted. To continue, click (Figure 1.9)



Figure 1.9 Bluetooth device not found

Note: Part of the Install process you may see Found New Hardware. This indicates a successful part of the Installation.



2. Finish

Now you have completed the installation of the USB Bluetooth Dongle software. To finish the installation click

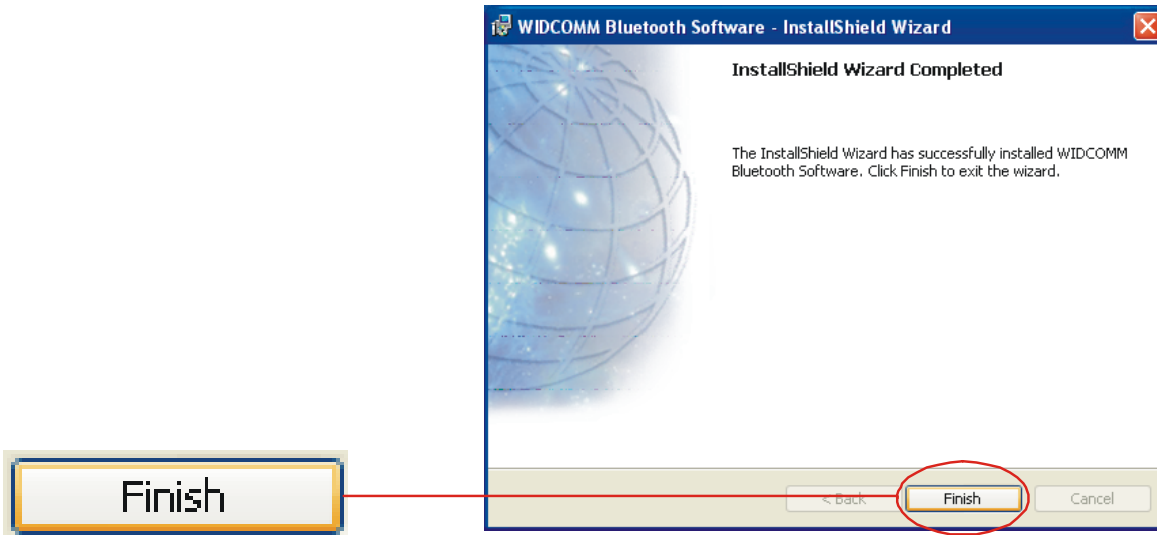


Figure 1.10 WIDCOMM Software InstallShield Wizard

13. Restart Windows

If you have not been prompted, please restart windows. Windows XP users don't have to restart windows.

Note: If the software and hardware installation are successful, you'll see a blue with white Bluetooth icon in the Windows System Tray. A blinking green LED on the USB Bluetooth Dongle is also a successful part of the installation.



Blue with White

USB?

What are USB ports?

All current computers now sold have generally at least two USB ports. Many devices today use USB ports, for example, mouse, keyboards, digital cameras, web cameras etc... Hence you need to check if your USB ports have all been used up by these devices.

The diagram is a USB port (about 1.2cm wide) and the Logo Associated with the port.

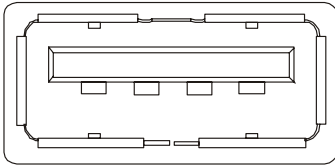


Fig 2.2 USB Port



Fig 2.3 USB Logo

Where are my USB ports?

- Desktop Computers.
- They are usually two USB ports next to the PS2 mouse (green round connector) and keyboard (purple round connector) ports (refer to Figure 2.1).
- Some desktops have two or more on one of the metal parallel plates below the monitor, keyboard, mouse, printer connections.
- Laptop/Notebook Computer.
- These vary and can be on the back or on the sides of the unit. Certain models have them vertically directly next to each other.

Can I connect to any USB port? I have more than one.

Yes, you may connect to any available USB port.

My computer has USB, but they are all used up.

You can purchase a USB hub that will provide you with more ports. See your retailer for details.

Initial Setup

STEP 3 Initial Setup

1. Open My Bluetooth Places

Double-click the My Bluetooth Places on your desktop.



Figure 3.1 My Bluetooth Places Icon

2. Run Initial Bluetooth Configuration

- The Initial Bluetooth Configuration Wizard will appear.
- The default options are recommended. You may uncheck them respectively if you do not wish the My Bluetooth Places icon to be placed.

To continue, click

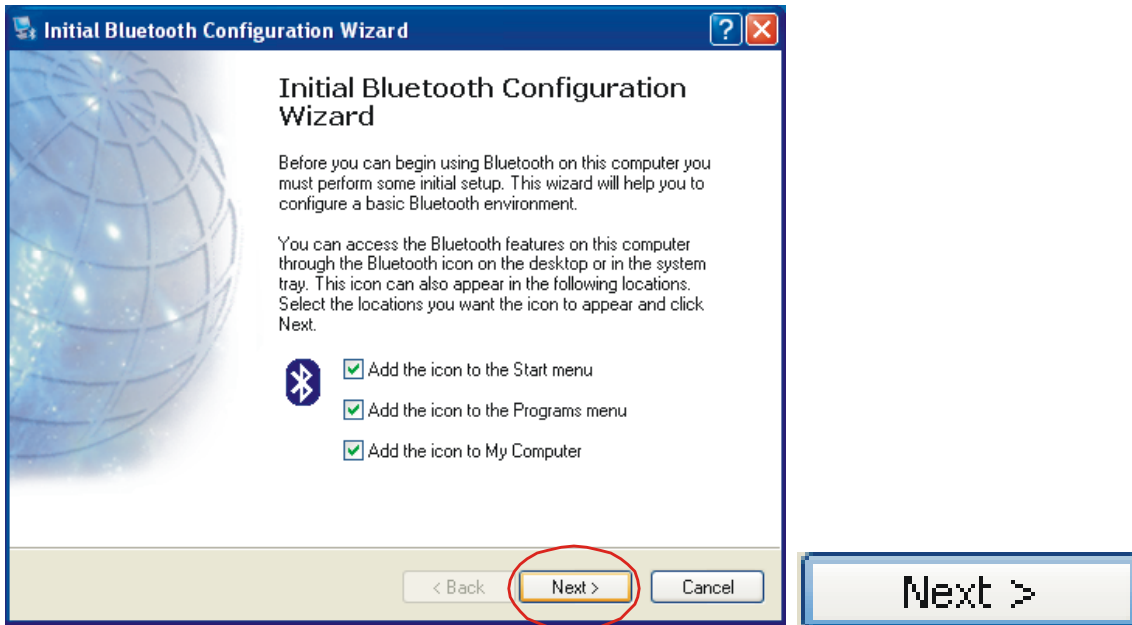
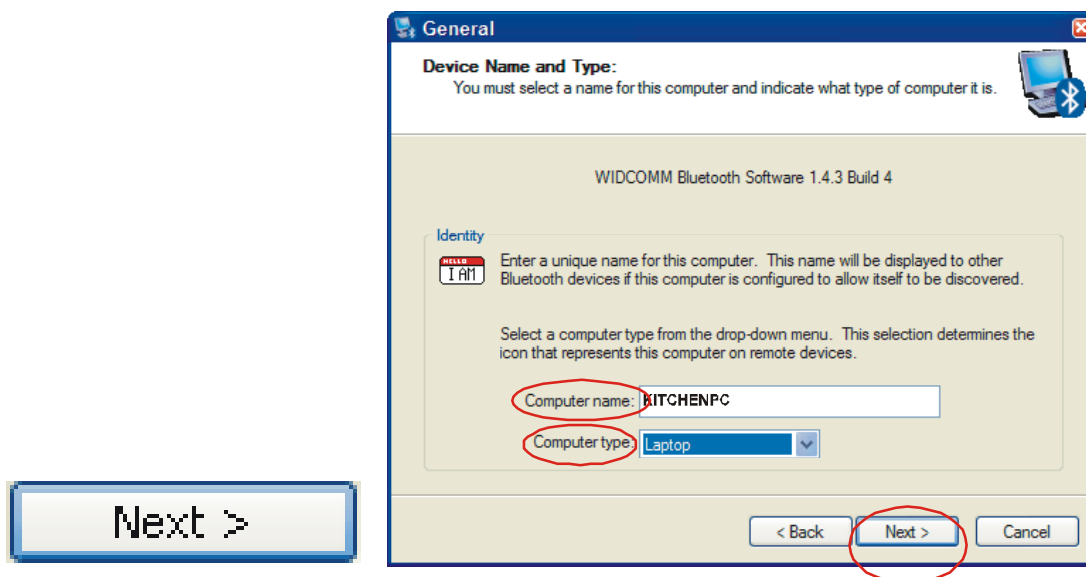


Figure 3.2 Initial Bluetooth Configuration Wizard

3. Give your computer a Device Name



- Figure 3.3 Device Name And Type
- The General window will allow you to identify your Bluetooth enabled computer with a name.
- Enter a unique Computer name.
- There may be one given here, you may change it if you wish.
- Select the computer type. This will only affect the icon in which you will appear to another Bluetooth user.

Note: Each Bluetooth device that wishes to connect to your computer must have a unique Computer name (different to all other users connecting).

To continue, click

4. Bluetooth Services

The Initial Bluetooth Configuration Wizard window will now allow you to enable or disable Bluetooth Services. (Refer to the Bluetooth Services section for information on services)

To continue, click

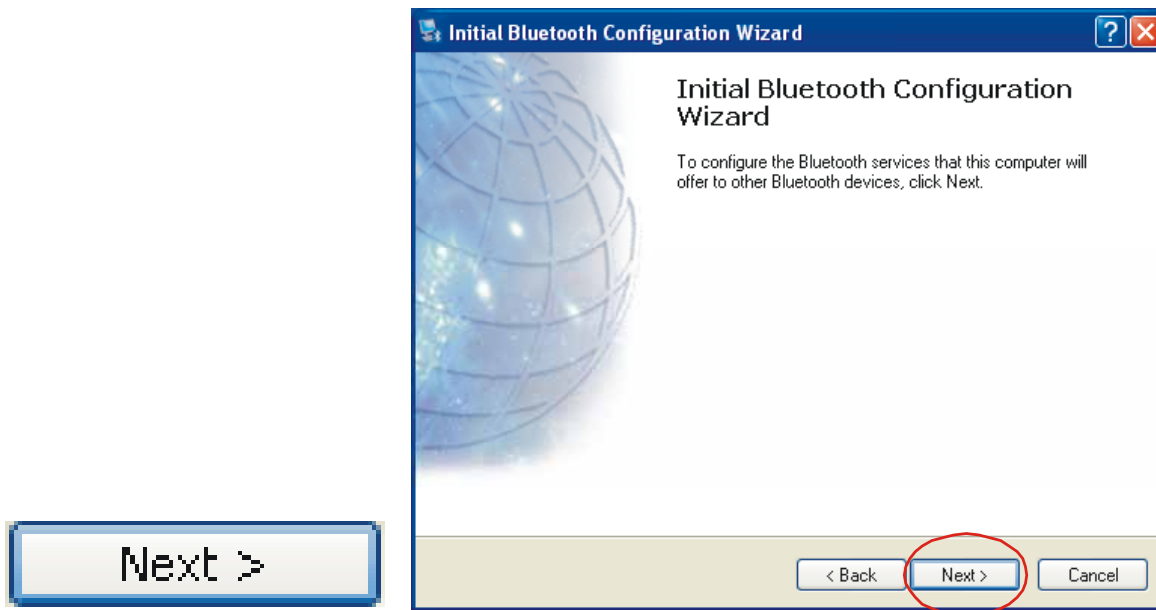


Figure 3.4 Bluetooth Services

5. Enable/Disable or View Bluetooth Services

- The Bluetooth Services Selection will allow you to disable or enable any services that you do not wish to offer.
- Disable or enable by clicking on the check box next to the name of the service you wish to alter
 - ◆ Enabled Service
 - ◆ Disabled Service
- By default all services are enabled (all check boxes ticked), this is recommended.

Note: You can choose to disable or enable services at anytime.

To continue and click

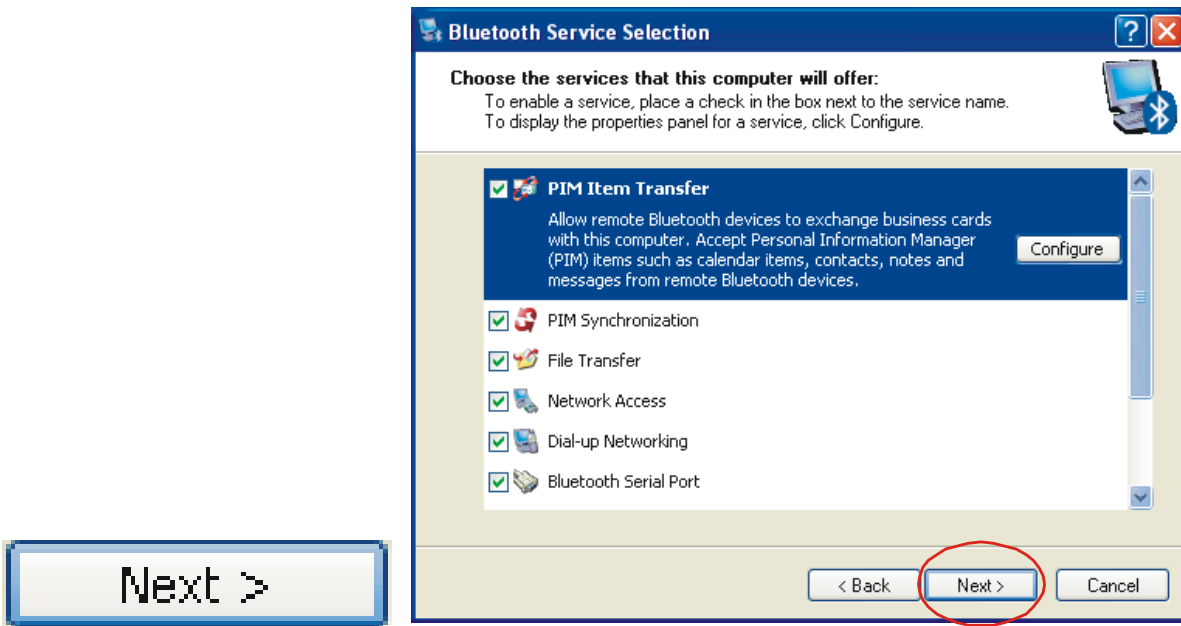


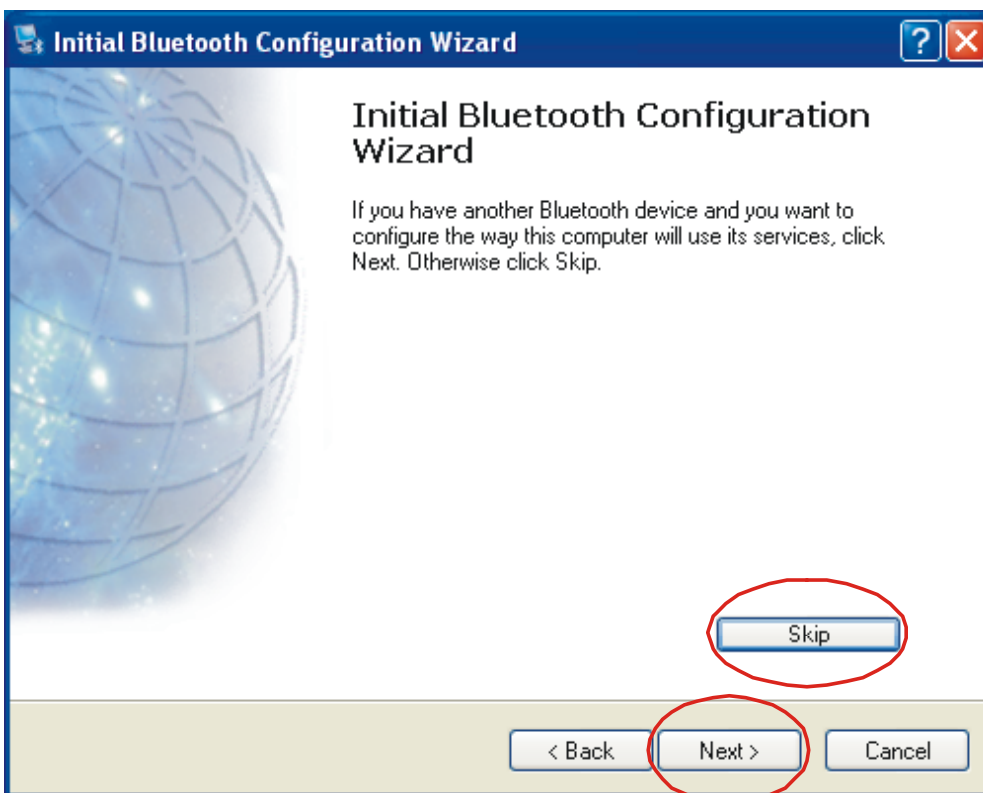
Figure 3.5 Enable/Disable Services

6. Search and configure other Bluetooth Devices

The Initial Bluetooth Configuration Wizard will allow you to choose whether to search and configure other Bluetooth devices.

- Note: If your other Bluetooth device is supplied with or requires additional software, setup the software first.
- Note: You can configure connecting Bluetooth devices at anytime.

You have two options



Option 1.) Search and configure a Bluetooth Device now.

To search and configure device(s) click



----OR----

Option 2.) Search and configure Bluetooth Devices Later

(Recommended) To continue, click



Now skip to Step 11

7. Search for Bluetooth Devices

The Bluetooth Device Selection window will attempt to search for any Bluetooth devices in the area.

Note: If you wish not to continue searching now, you may click "Back" and go back to Step 6

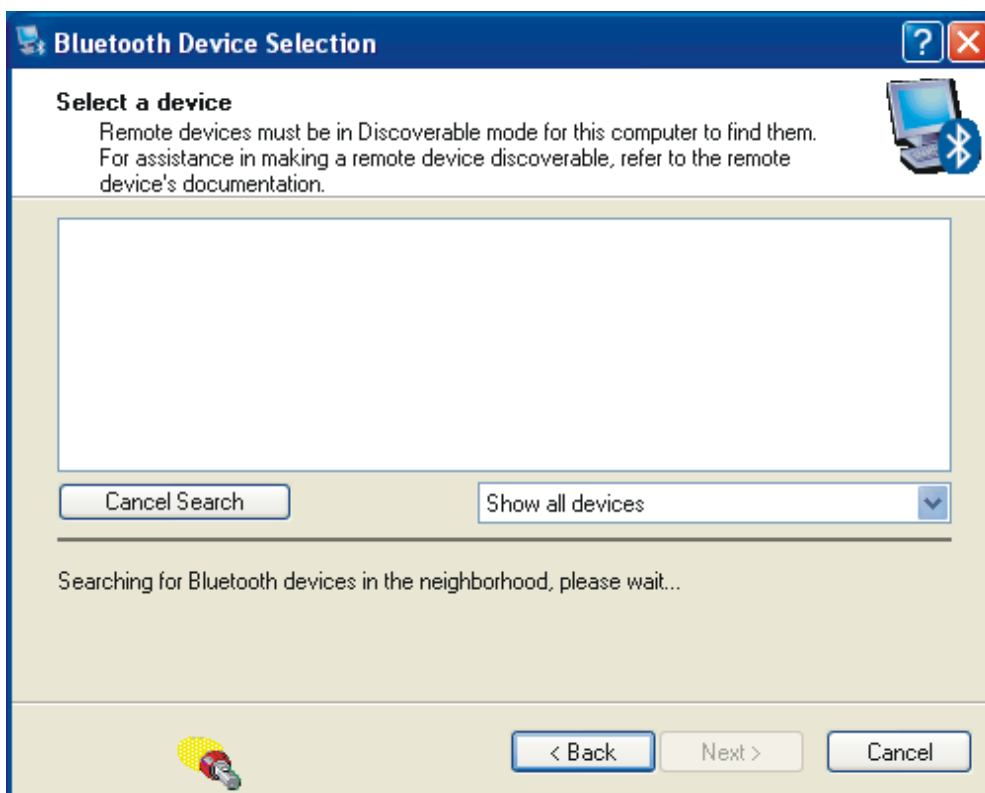


Figure 3.7 Device Selection

8. Select Bluetooth Device to configure

If devices have been found, they will be shown as an icon corresponding to the type of device.

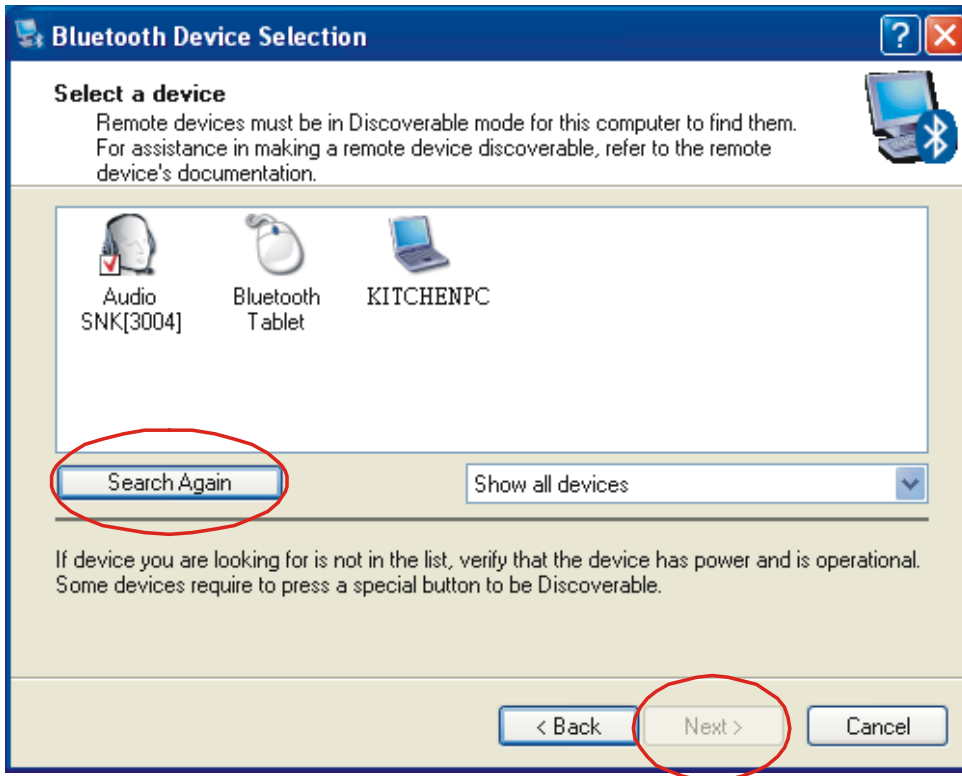



Figure 3.8 Found Devices

If the device you are searching for is not turned on, you may switch the device on and

click 

The drop down menu will allow you to reduce the search to a specific group, unless you are sure of the group your device is in, (recommended) select Show All Devices.

Select the icon of the device you wish to connect to and click 

- Note: You can only select one at a time, you will be able to repeat this process later.
- Note: A device needs to be selected before Next button can

10. Search and configure another device

You will return to the Initial Bluetooth Configuration Wizard, if you wish to search for more Bluetooth devices you may by repeating Step 6 to 10.

Otherwise, to continue click 

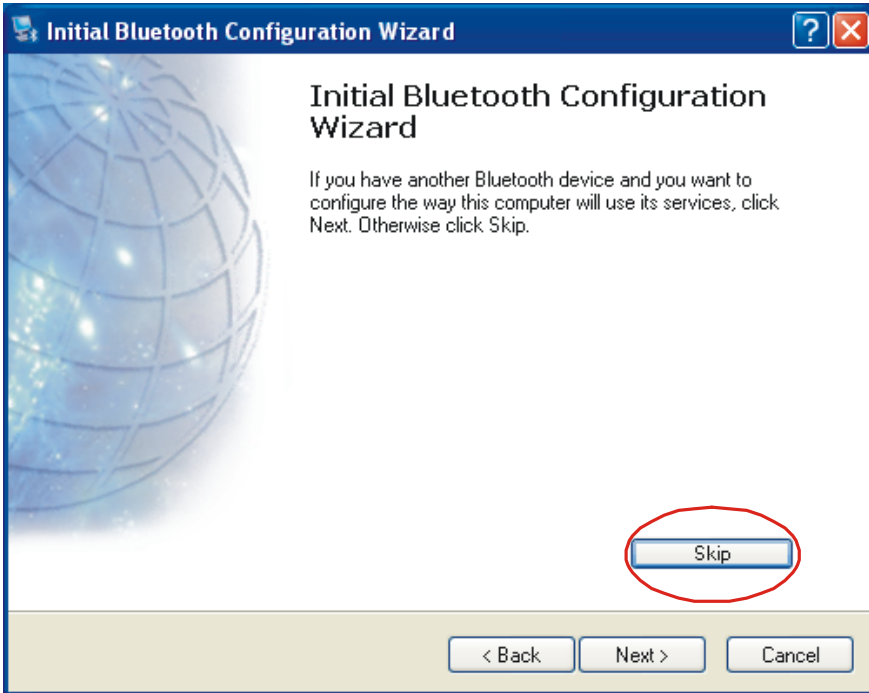


Figure 3.10 Configuration Wizard

11. Completed Setup

You have now completed the initial setup.

Your USB Bluetooth Dongle is ready to be used.

To finish, click 

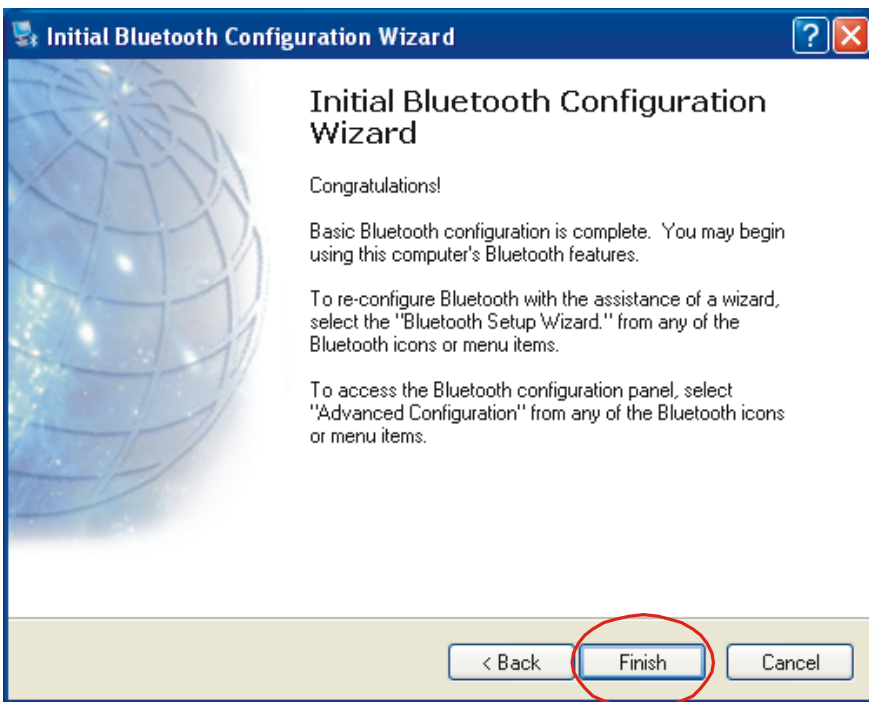


Figure 3.11 Finished


STEP 4 My Bluetooth Places

Overview

Your USB Bluetooth Dongle can be setup and controlled through your My Bluetooth Places. My Bluetooth Places allows you to search for other users, enable/disable services, explore yours or another users' files.

BluetoothSystem Tray

The Bluetooth icon in the Windows System Tray indicates the USB Bluetooth Dongle Status.

Enabled	Disabled	Connected
 Blue with White	 Blue with Red	 Blue with Green

1. Open My Bluetooth Places

To open My Bluetooth Places, go to your windows desktop and double-click the icon



Figure 4.1 My Bluetooth Places Icon

My Bluetooth Places - Bluetooth Tasks

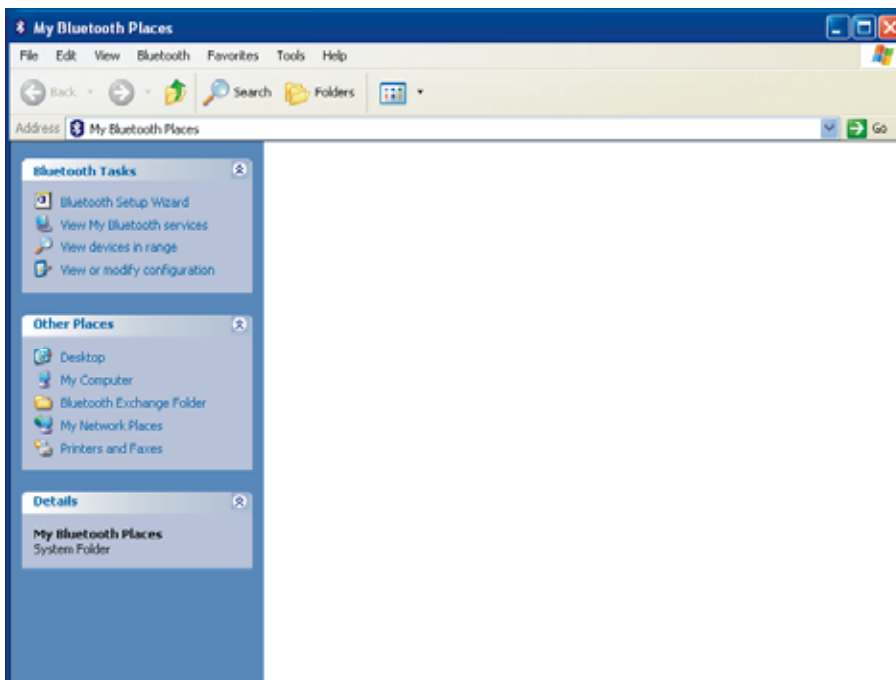


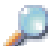



Figure 4.2 Bluetooth Software Interface (Windows XP only) Please see notes for Win98SE/ME/2000

 Bluetooth Setup Wizard	Help setup your Bluetooth Environment
 View My Bluetooth services	Enable, Disable or view
 View devices in range	Search and connect to nearby
 View or modify configuration	Change Bluetooth Settings

Bluetooth Tasks

Bluetooth Setup Wizard

The Bluetooth Setup Wizard has four Wizards.

- **What is a Wizard?** A Wizard is a step-by-step process, that assists you to complete a task. Click on the radio button next to the task that you wish to complete and click



Figure 4.3 Bluetooth Setup Wizard

View My Bluetooth services

These are the services that you are currently offering.

- You can disable or enable any service by right-clicking on that service and select from the context menu enable or disable.

Double-click on the service icon to see Fig 4.5
Bluetooth Connection Status.

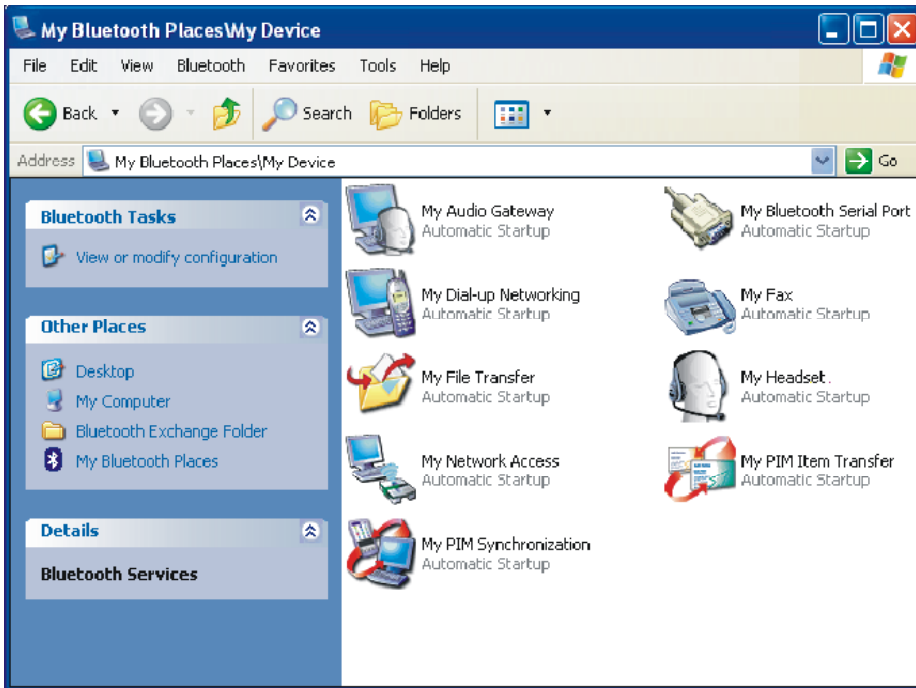


Figure 4.4 My Bluetooth Services

Bluetooth Connection Status Window

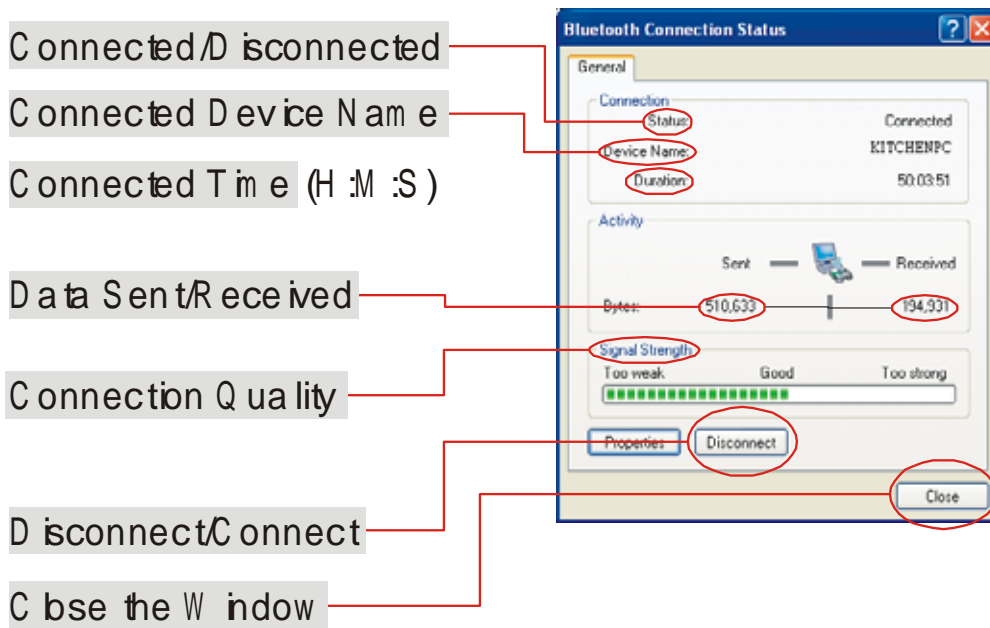


Figure 4.5 Bluetooth Connection Status

 **View devices in range**

View devices in range allows you to search and connect to any searchable device. The window will indicate that it is searching with the icon.

Found devices will appear and represented by an associated icon.



You may click Search for devices in range again to start another search.

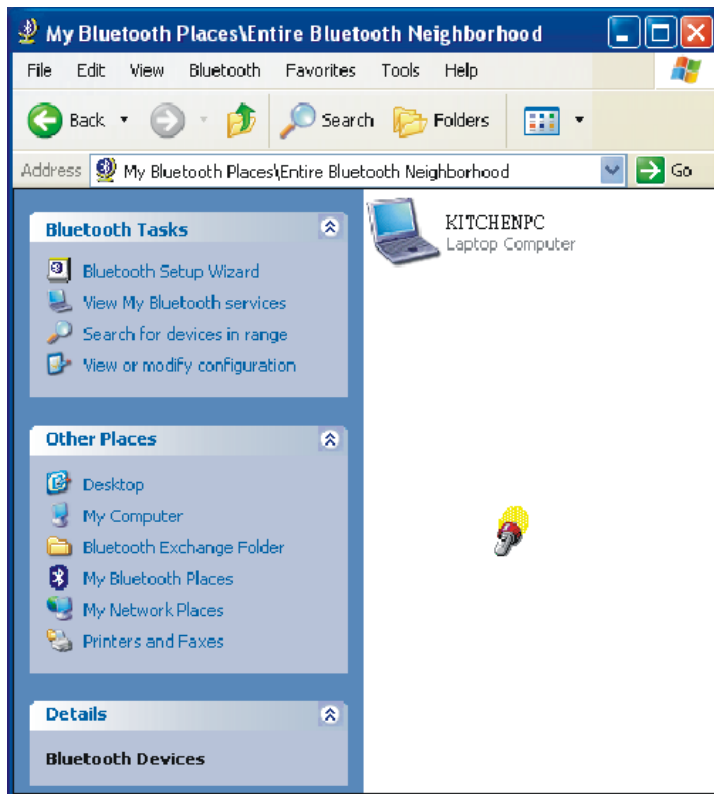


Figure 4.6 Searching for devices

Connect to another Bluetooth device

Connecting to another Bluetooth Device

Once you see the device you would like to connect to (refer to Figure 4.6), double-click on the associated icon.

Click on Discover Services to refresh the services available.

Double click on any of the services to initiate a connection.

You will see the Connecting... Window. (Refer to Fig 4.8)

The other user will be prompted with your connection. If successful, you will see next to the service.

- Note: You will only see
Services that are offered by the other Bluetooth
device, not all services may appear

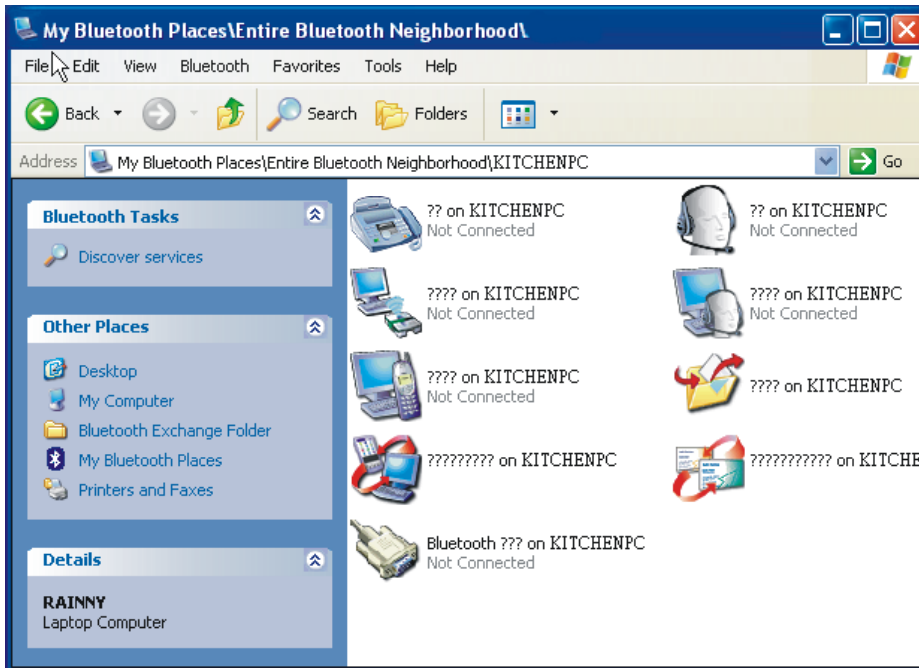


Figure 4.7 Discover Services

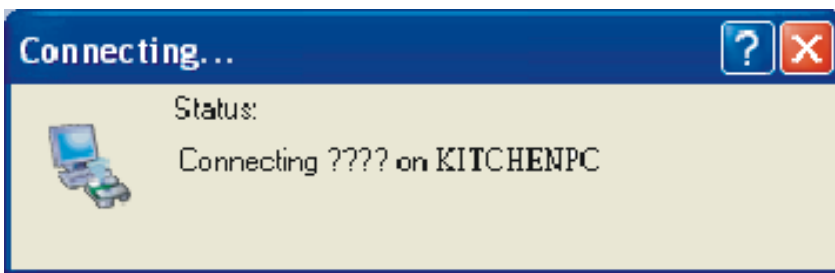


Figure 4.8 Connecting

Advanced Configuration



View or modify configuration

The Bluetooth Configuration is divided into six categories, represented by the tabs, to change categories, click on the corresponding tab.

General tab - This category allows you to change your unique Computer Name and the Computer Type (Desktop or Laptop Computer).

When will I need this?

During initial setup you would have already given your computer a name; however, if you need to change it you may do so here. You may need to change it if you happen to connect to another Bluetooth device that has the same name as yours. You can not connect to a device that has the same name.

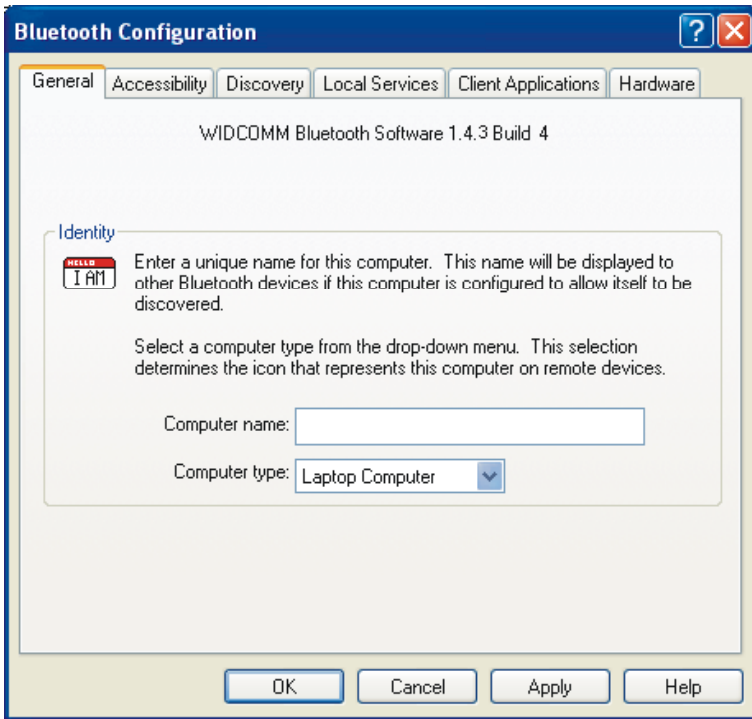


Figure 4.9 General Tab

Accessibility tab - This allows you either allow to not allow other users to discover (find or search for you).

You may also specify which device you would like to be able to discover your unit.

You may also specify a sound to be played when another user requests a PIN.

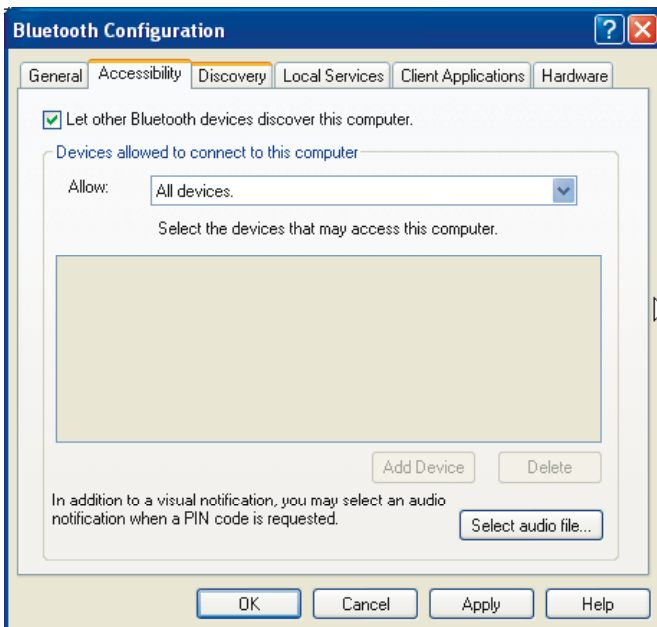


Figure 4..10 Accessibility

Discovery Tab - allows you to enable auto seek for other Bluetooth devices. You can set the interval between each seek.

- Note: For mobile devices, it is not recommended unless necessary, due to extra consumption of

power.

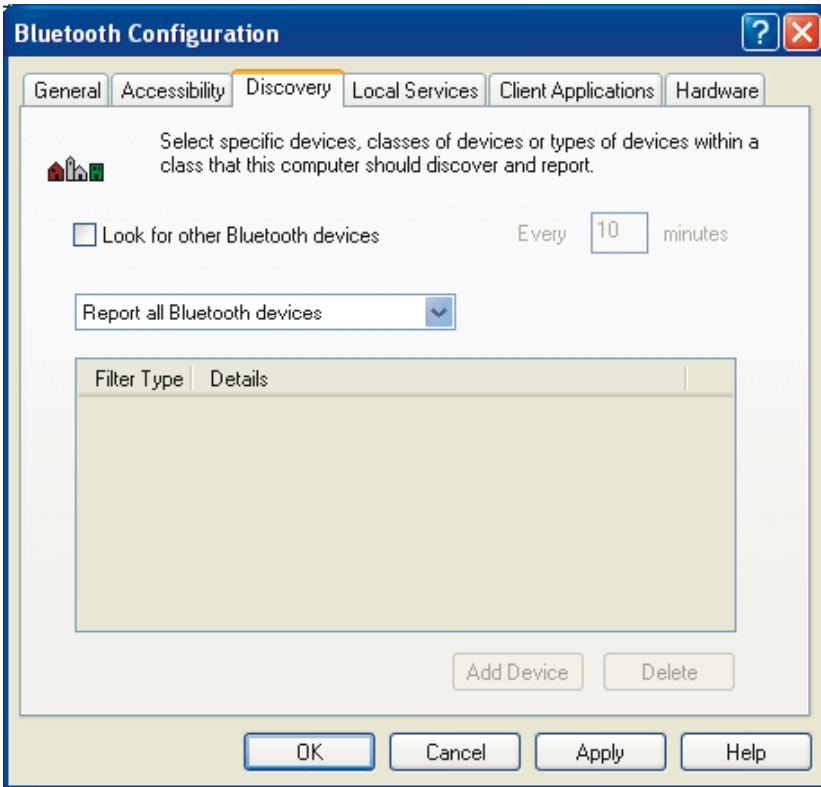


Figure 4.11 Discovery Tab

Local Services Tab - allows you to configure each service that you offer.

To view or change settings, select the service and click

Client Applications Tab - is similar to Local Services Tab; however, these are the settings for devices that you connect to.

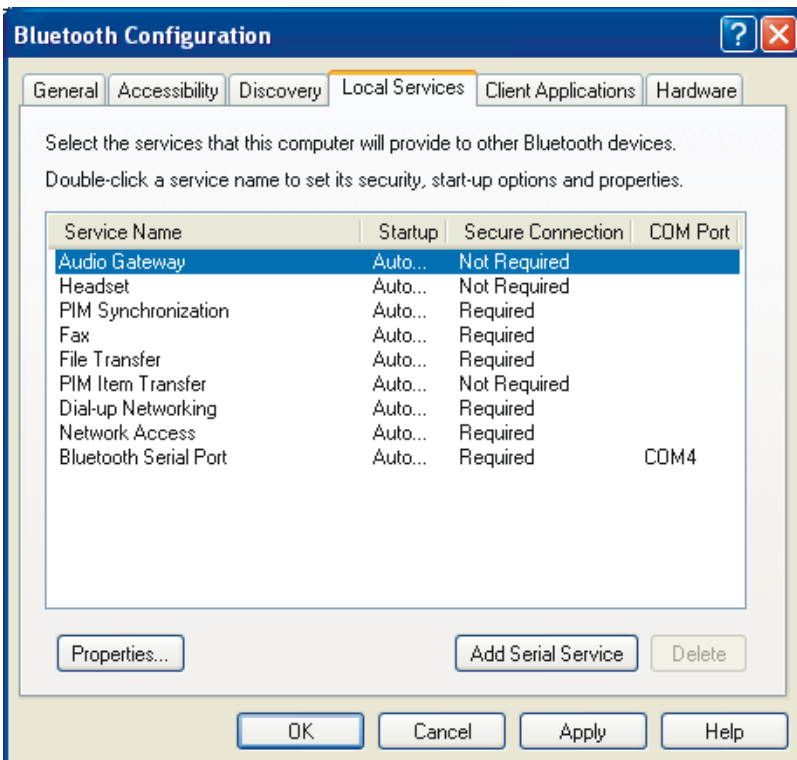


Figure 4.12 Local Services Tab

Pairing

STEP 5 Pairing

What is Pairing? - Pairing allows two devices to be setup and will recognize each other whenever these two devices meet again.

- Note: Some devices do not require pairing. If unsure, check the user manual of other Bluetooth Device, otherwise you will be prompted when pairing is necessary.

When do I need to Pair?

There are several different ways that you will be required to pair.

Case 1.) Enter a PIN Code

The Bluetooth PIN Code Request window will automatically appear when you double click on a service of another Bluetooth device when a PIN is required.

Case 2.) Network Access connection failed

If you see this message, you will need to repair.

To repair follow steps to Manual Pairing.

- Note: This message usually occurs if the PIN was entered incorrectly, or other Bluetooth device did not respond to pairing initiation.

Case 3.) You wish to unpair or repair

If you wish to unpair, Refer to Manual Pairing, Step 2 and 3.

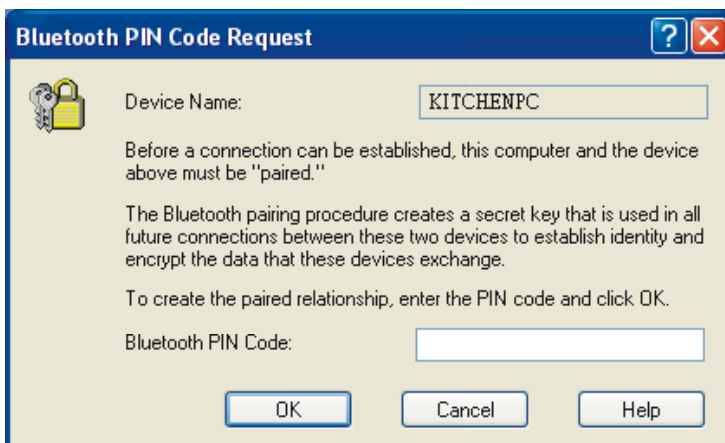


Figure 5.1 Pin Code Request

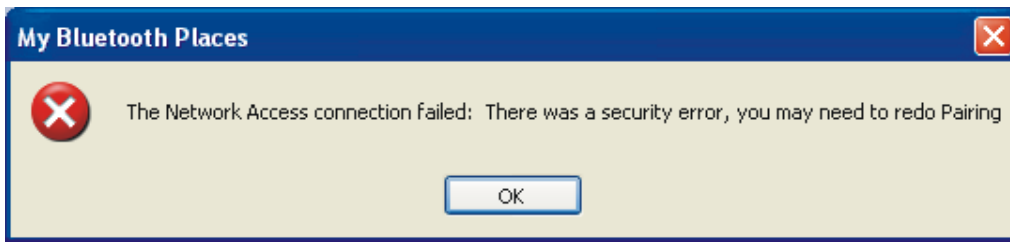


Figure 5.2 Network Access Connection Failed

Manual Pairing

1. Ensure that you are not paired.

To check whether you are paired or not, you will need to go to your desktop, and double-click My Bluetooth Places icon, (see My Bluetooth Places section for more details).

2. Click on View Devices in Range.

Search for the unit you wish to pair with.

3. If Paired, select unpair

If you are paired, you will see a (paired), or (connected) on the icon. If so, right click on the icon, and select unpair from the context menu.

4. Right click and select Pair

Right-click on the icon again, and from context menu click pair.

5. Enter a PIN

You will be prompted with PIN Code Request. Enter a PIN and click OK to continue.

- PIN code is required by other device. Incorrect PIN will result in a failed connection. This also prevents unauthorized access. Your PIN can be alphanumeric. For example sam12

The other user will now be informed that you wish to connect to their computer and use their services. If they enter the correct PIN code, a connection will be made and a pairing has also been established.

- Please note that the other device needs to enter the PIN promptly, otherwise the Pairing will fail and Paring Manually will need to be repeated.

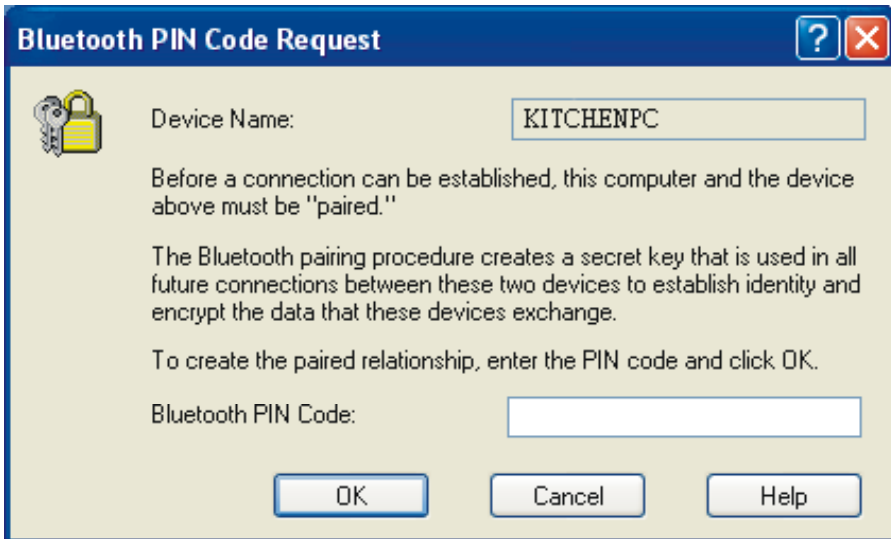


Figure 5.3 Bluetooth PIN Code Request

Receiving a Pariring

Receiving a Paring request.

If another Bluetooth Device wishes to connected to your USB Bluetooth Adaptor, you will be prompted with a text bubble, Bluetooth PIN Code Required, in the bottom right hand corner of your screen (Windows System Tray)

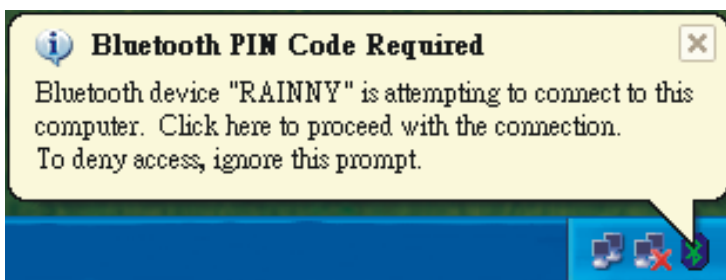


Figure 5.4 PIN Code Required

Accepting a Pairing

1. Click the prompt to accept

If you want to allow another Bluetooth device to connect to your computer, click the prompt to accept.

2. Enter PIN

You will then need to enter the correct PIN to allow a successful connection.

If you do not wish to allow access, simply ignore the text bubble.

- Note: You will be prompted each time a paired device wishes to access a service you provide.



Figure 5.5 Bluetooth Service Authorization

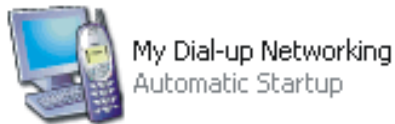
Services

My Bluetooth Services



My Audio Gateway allows you to use your Bluetooth enabled computer as a headset for another Bluetooth Device.

Example use: If you have speakers and microphone attached to your computer, you can use it to answer a Bluetooth enabled phone.

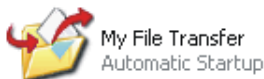


My Dial-up Networking allows you to wirelessly use another Bluetooth device that is capable, to dial-up (internet access).

Example use: If you wish to use your Bluetooth enabled phone to dial-up (internet access) wirelessly and your phone is in your bag, or in your pocket.

You can also wirelessly use another Bluetooth enabled and capable computer or device to dial-up.

Example use: Your desktop computer has a modem attached and Bluetooth enabled, you can use your Bluetooth laptop/notebook computer.



My File Transfer allows you to wirelessly and conveniently access or send files with other Bluetooth devices.

Example Use: You can send files to another Bluetooth device, like a handheld device, phone, or another computer.

Usage: To send a file, right-click on the file(s) or directory you wish to send, and select Send To -> Bluetooth -> Other...

Find the device that you wish to send to.

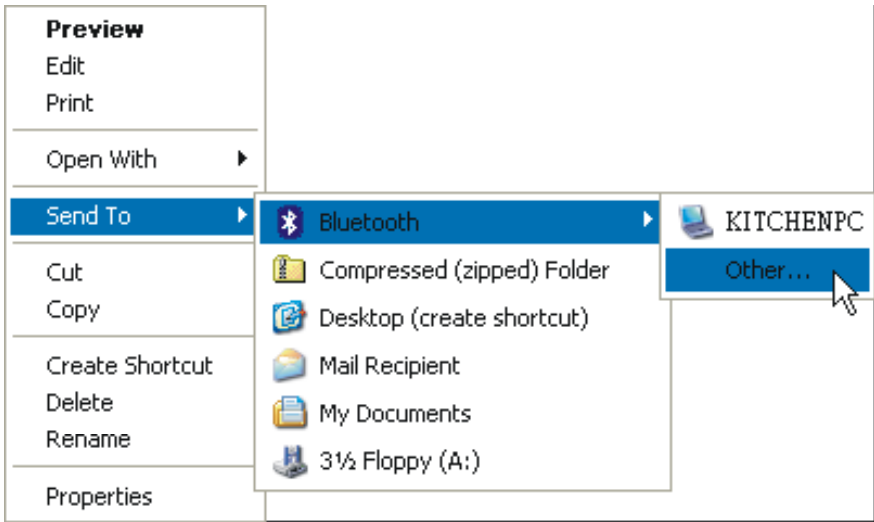
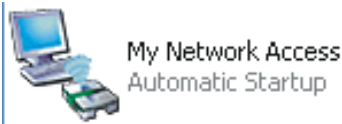


Figure 6.1 WIDDCOMM Software InstallShield Wizard



My Network Access allows you to use the service to act as a virtual network connection.

Example Use: If you have two Bluetooth enabled computers and you wish to connect (network) them without (or can not) physically running a network cable between them, you can use this service. You can also share the internet using this service.



PIM Synchronization allows you to synchronize your contacts, email, address book, calendar or notes with a compatible Bluetooth device.

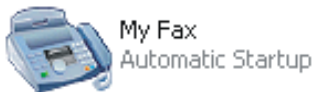
Example Use: Commonly used with PDAs, Laptop/Notebook computers, phones and other mobile devices to ensure two copies are identical and updated.

- Note: Outlook will only synchronize the defaulted contacts folder and not sub-folders.



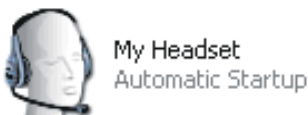
My Bluetooth Serial Port allows you to create a virtual Serial Port on your computer.

Example Use: Many mobile devices do not have serial ports anymore, if you require to attach a device that can only be connected by a serial port, you can use the serial port of a Bluetooth enabled computer.



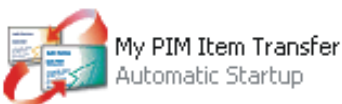
My Fax is a service that allows you to use the fax facility of a remote Bluetooth modem, phone or computer.

Example Use: You have a Bluetooth enabled desktop computer with a fax/modem capable of sending and receiving faxes. You can use this service to send faxes through this computer from your Bluetooth enabled computer. You can also use your Bluetooth enabled phone.



My Headset service is used to connect to a Bluetooth enabled headset.

Example Use: You can attach a wireless Bluetooth headset to your computer to listen to music, or communicate over the Internet.



PIM Item Transfer is a service that allows you to send or request PIM Items (contacts, email, calendar or notes)

Example Use: Some mobile devices will be setup to send a business card if you connect to their PIM Item Transfer Service.

F.A.Q.

Frequently Asked Questions

What is the WIDCOMM software that I am installing?

Many Bluetooth Adaptors use the WIDCOMM software to work with the adaptor and connect with other Bluetooth devices.

The Bluetooth Device that I am connecting to has the same device name.

You may change the device name of your device (See page 25).

When I search, devices appear that I do not recognize.

Because Bluetooth has a range that could possibly exceed the area you are in, you will detect devices beyond those that you are seeking. For example, people passing by; however, this does not necessarily

mean you will be able to access their device without their permission.

Is my data encrypted?

Data transferred between Bluetooth device can be set to enable secure connection. Secure connections are encrypted using the PIN. You can enable or disable secure connections by going to Local Services and selecting the property of the service you wish to secure. (See page 20).

My Bluetooth connection drops out when I use my cordless phone.

Bluetooth uses the 2.4Ghz unlicensed ISM band, which is the same as some high end cordless phones, video transmitters, and some other wireless devices. Even though Bluetooth uses frequency hopping to prevent interference with these devices, at times it may interfere.

My Bluetooth Device requires a PIN, and I do not think it has one.

Some Bluetooth devices (for example headsets) are set to a default PIN 0000.

My computer does not detect the USB Bluetooth Adaptor.

You may need to get a technician to make sure your USB port drivers are installed correctly.

Win98SE/ME/2K

Notes for Windows 98SE / ME / 2000

There are slight differences if you are using your USB Bluetooth Adaptor under these Operating Systems, these are noted below.

If you are using Windows 98SE/ME/2000 you will not see Figure 4.2 when you Double-Click the My Bluetooth Places icon on your desktop, instead you will see Figure 7.1

The equivalent Windows XP and Win 98SE/ME/2000 is shown below.

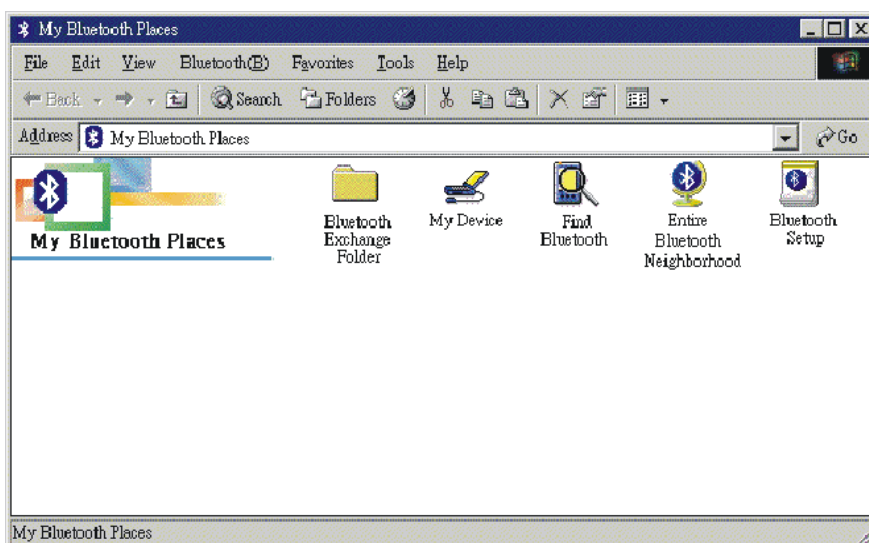
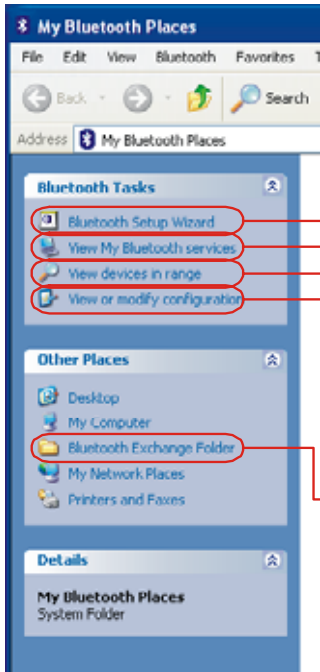


Figure 7.1 My Bluetooth Places (Win 98SE/ME/2000)

Windows XP

Windows 98SE, ME, 2000



Right-Click on the Bluetooth icon in the System Tray and select configuration.

Use View Devices in Range. And press F5 to refresh.

