

**CUSTOMER
SUPPORT
INFORMATION**

Order toll-free in the U.S. 24 hours, 7 A.M. Monday to midnight Friday: 877-877-BBOX
FREE technical support, 24 hours a day, 7 days a week: Call 724-746-5500 or fax 724-746-0746
Mail order: Black Box Corporation, 1000 Park Drive, Lawrence, PA 15055-1018
Web site: www.blackbox.com E-mail: info@blackbox.com

User's Manual

Version 1.1

USB 2.0 PCI HOST CARD

Safety Instructions

- Always read the safety instructions carefully.
- Keep this User's Manual for future reference.
- Keep this equipment away from humidity.
- Lay this equipment on a reliable flat surface before setting it up.
- If any of the following situations arise, get the equipment checked by a service technician:
 - The equipment has been exposed to moisture.
 - The equipment has been dropped and damaged.
 - The equipment has obvious signs of breakage.
 - The equipment is not working properly or you cannot get it to work according to the User's Manual.

INTRODUCTION

The *USB 2.0 PCI Host Card* supports a transmission rate of up to 480 Mbps (Megabits per second) to give better performance (40 times faster than USB 1.1 of 12 Mbps and also compared to 400 Mbps transmission rate of IEEE 1394 firewire) and allows the connection of multiple peripheral devices to function simultaneously. It is fully backward compatible with USB Revision 1.1 devices, meaning your previously invested USB 1.1 devices can continue to function as usual. The *USB 2.0 PCI Host Card* offers high performance functionality by allowing multiple peripheral devices to share the 40-time increased bandwidth. Peripheral devices requiring high-speed transmission rates (such as, external storage devices, scanners, DVD drives, CD-RW drives, magneto-optical drives, and digital cameras/camcorders) that used to require expensive firewire (IEEE 1394) can now be supported by this USB 2.0-compliant host adapter at huge cost savings.

FEATURES

- Compliant with both the Standard Specification of USB 2.0 and USB 1.1.
- Compliant with PCI Specification Revision 2.2.
- PCI multi-function device consists of two OHCI cores for low-speed (1.5 Mbps) and full-speed (12 Mbps) signaling, plus one EHCI core for high-speed (480 Mbps) signaling.
- High speed up to 480 Mbps data transfer rate.
- Provides a total of 5 USB ports: four external and one internal downstream Type A USB ports.
- Supports *Plug & Play* specification.
- Enables a PC to connect devices requiring low as well as high-speed transmission of such as keyboards, mice, printers, as well as external storage devices, scanners, and digital cameras/camcorders, etc. by hot-plug capability.
- Links up to 127 devices.

SYSTEM REQUIREMENTS

- IBM compatible Pentium-233MHZ or faster & Mac PCs.
- 64 MB RAM or more.
- Available PCI slot with Revision 2.2.
- Systems with MS Windows 98Se / Me / 2000 / XP, or Mac OS X

Package Contents

- USB 2.0 PCI Host Card
- User's manual
- Installation CD Driver

- Electrical Specifications

Absolute Maximum Ratings

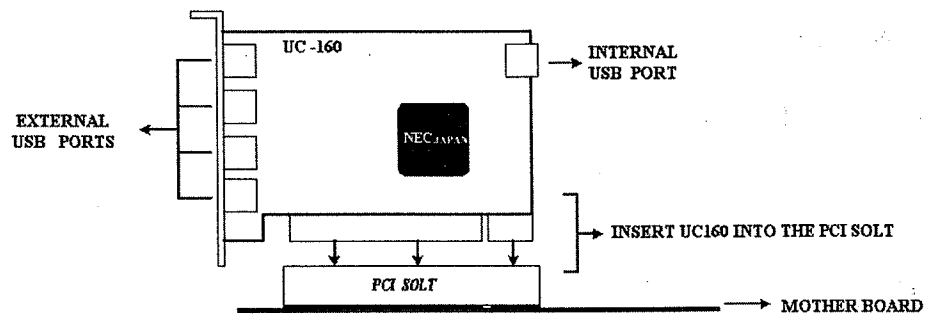
Parameter	Symbol	Condition	Rating	Unit
Power supply voltage	V_{DD}		-0.5+4.6	V
Input voltage, 5 V buffer	V_I	3.0 V_VDD_3.6V $V_I < V_{DD} + 3.0V$	-0.5 to +6.6	V
Input voltage, 3.3 V buffer	V_I	3.0 V_VDD_3.6V $V_I < V_{DD} + 0.5V$	-0.5 to +4.6	V
Output voltage, 5V buffer	V_O	3.0 V_VDD_3.6V $V_I < V_{DD} + 3.0V$	-0.5 to +6.6	V
Output voltage, 5 V buffer	V_O	3.0 V_VDD_3.6V $V_I < V_{DD} + 0.5V$	-0.5 to +4.6	V
Operating temperature	T_A		0 to +70	—
Storage temperature	T_{stg}		-10 to 80	—

Caution: Product quality may suffer if the absolute maximum rating is exceeded even momentarily for any parameters. That is, the absolute maximum ratings are rated values at which the product is on the verge of suffering physical damage, and therefore the product must be used under conditions that ensure that the absolute maximum ratings are not exceeded.

The ratings and conditions indicated for DC characteristics and AC characteristics represent the quality assurance range during normal operation.

HARDWARE INSTALLATION

Installation Figure:

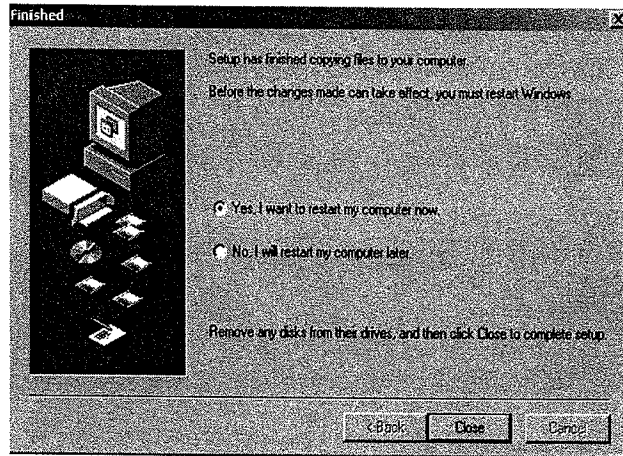


SOFTWARE INSTALLATION

1. Make sure the PCI host card is in the PCI slot of your PC. Turn on the power, then insert the driver CD-ROM into the CD-ROM drive.
2. The system will detect the new device, and there will be a pop-up window. Click the Cancel button as needed.



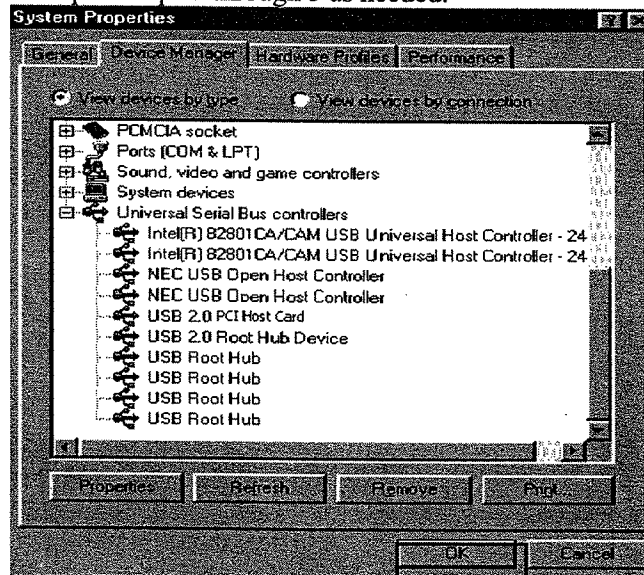
3. Double click the left mouse button at "My Computer". Double click CD-ROM drive, then the Driver folder, the Windows folder, and then U2V2_062.exe.



4. Setup has finished copying files to your computer. Select Yes, I want to restart my computer now, and click **Close**.

Windows 98Se

1. The wizard searches for new drivers; click **Next**.
2. What do you want Windows to do?
Select "Search for the best driver for your device. [Recommended]", and click **Next**.
3. Select "Specify a location" and keep the default setting. Click **Next**.
4. The Windows driver file does a search for the device; click **Next**.
5. Windows has finished installing the software. Click **Finish**.
6. Insert Windows 98 Second Edition CD-ROM in the selected driver and click **OK**.
The system will detect **base5.cab**; click **OK**.
7. Windows has finished installing the software that your new hardware device requires. Click **Finish**.
8. Repeat steps 1 through 5 as needed.

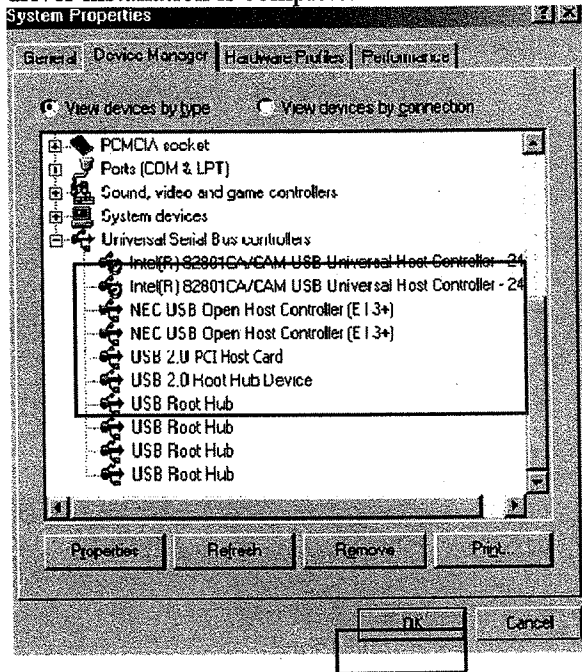


7. Right click **My Computer**, select **Properties**, then **Device Manager** to verify

that the driver installation is complete.

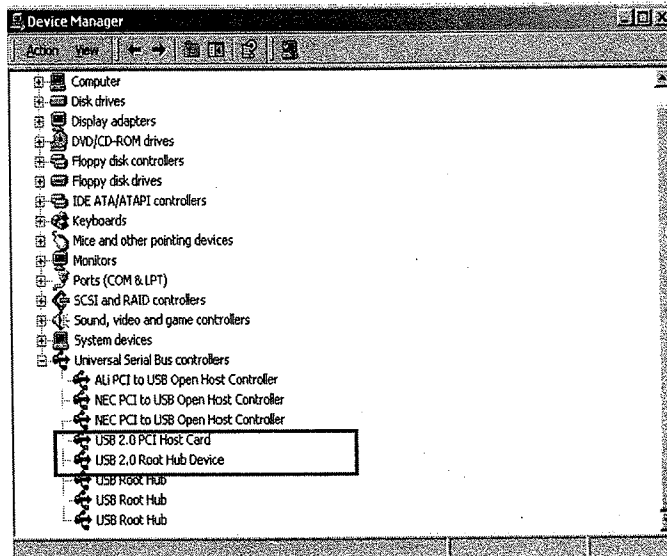
Windows Me

Right click **My Computer**, select **Properties**, and **Device Manager** to verify that the driver installation is complete.

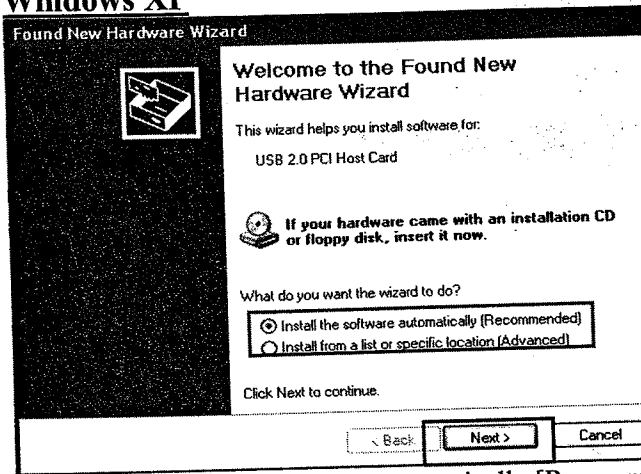


Windows 2000

Right click **My Computer**, select **Properties**, then **Hardware**, then **Device Manager** to verify that the driver installation is complete.



Windows XP



1. Select “Install the software automatically [Recommended]”, and click Next.

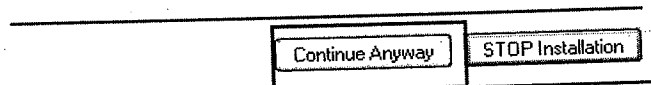
Hardware Installation



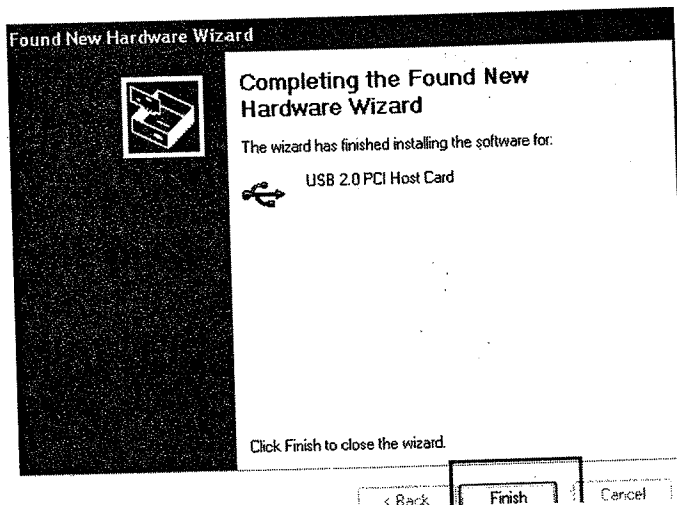
The software you are installing for this hardware:
USB 2.0 PCI Host Card

has not passed Windows Logo testing to verify its compatibility with Windows XP. [\(Tell me why this testing is important.\)](#)

Continuing your installation of this software may impair or destabilize the correct operation of your system either immediately or in the future. Microsoft strongly recommends that you stop this installation now and contact the hardware vendor for software that has passed Windows Logo testing.

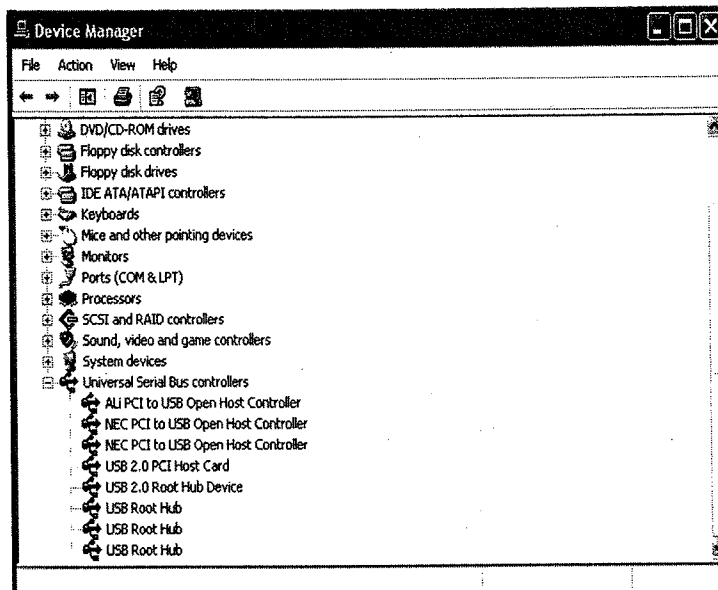


2. Click Continue Anyway.



3. When the wizard has finished installing the software, click **Finish**.

4. Repeat steps 1 through 3 as needed.



5. Right click **My Computer**, select **Properties**, then **Hardware**, then **Device Manager** to verify that the driver installation is complete.

Mac OS X (Version 10.1) Installation:



USB2EHCI_v1072.img.bin

1. Click USB2EHCI-v1072.img.bin at the CD-ROM driver; it will generate USB2EHCI_v1072.img.

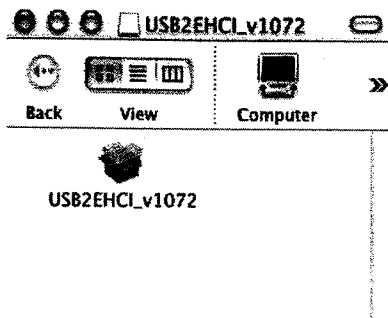


USB2EHCI_v1072.img

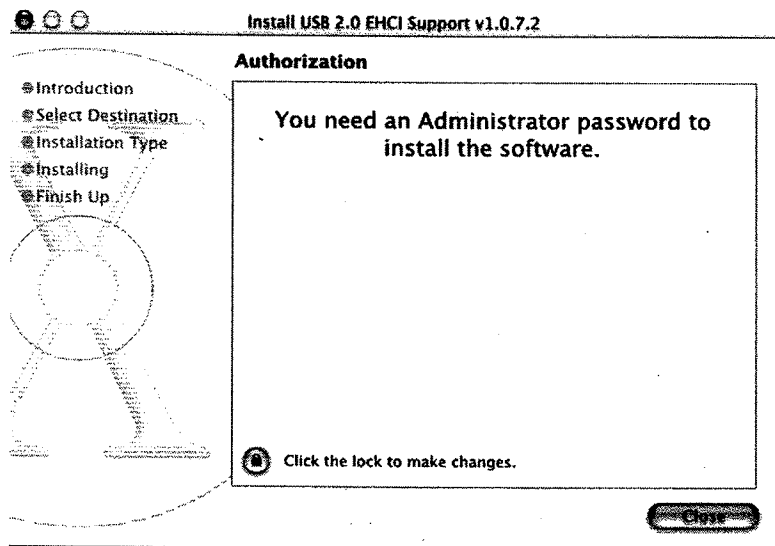
2. Click “USB2EHCI_v1072.img”; it will generate USB2EHCI-v1072 on the desktop.




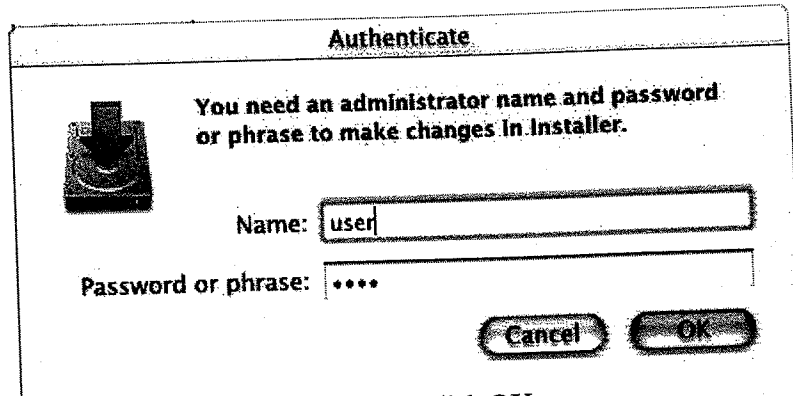
3. Click USB2EHCI-v1072 on desktop. A pop-up window will appear.



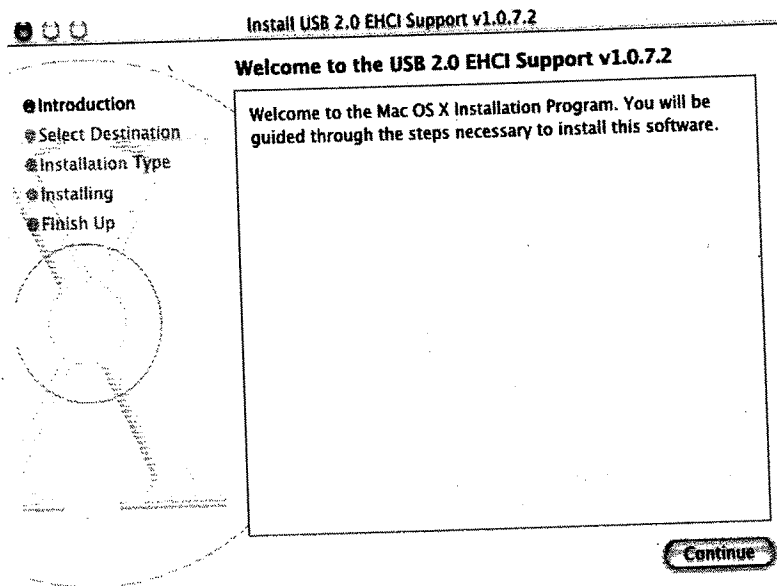
4. Click “USB2EHCI_v1072”.



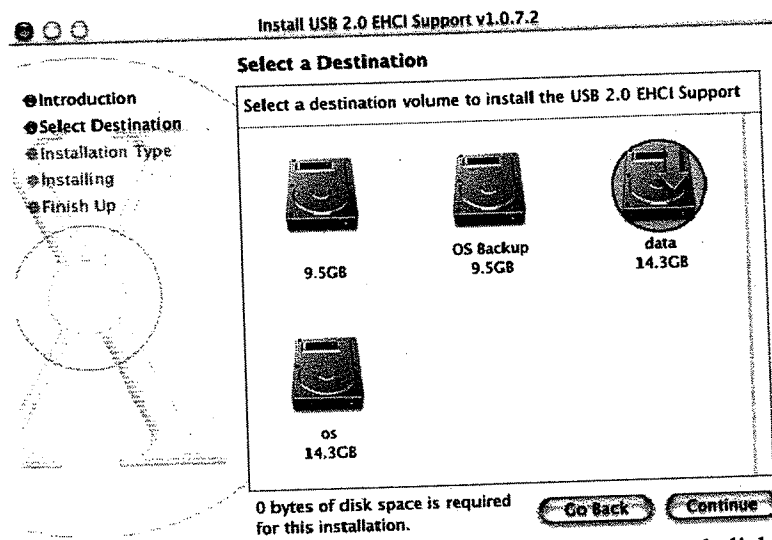
5. Click  to make changes.



6. Enter your name, password, and click OK.

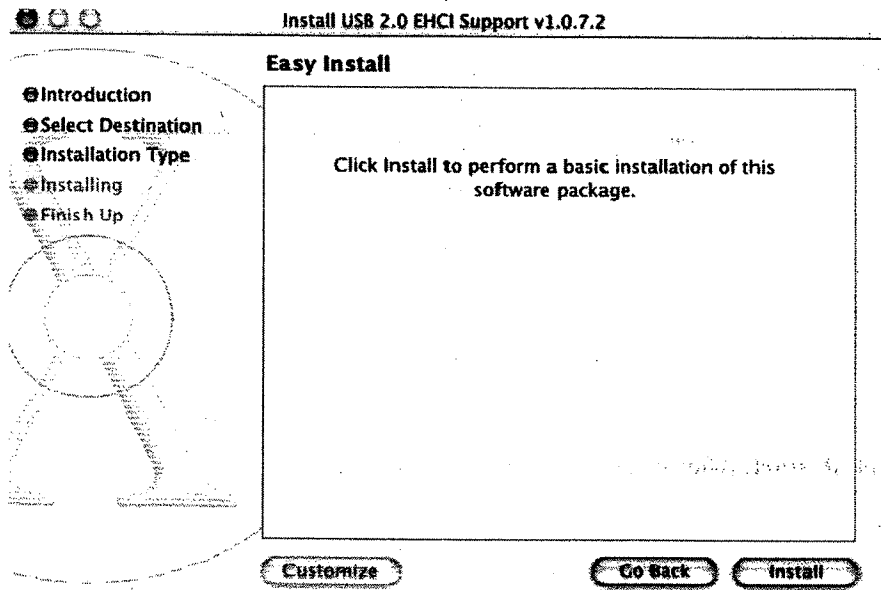


7. Click Continue.

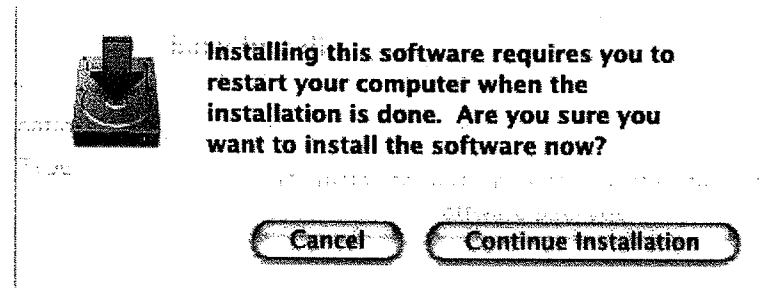


8. Select a appropriate destination to install the driver, and click

Continue.



9. Click **Install**.



10. Click **Continue Installation**.



Install Software

- Introduction
- Select Destination
- Installation Type
- Installing
- Finish Up

The software was successfully installed

The computer will restart in 20 seconds.



11. Click **Restart**. After you restart the system, the device is ready to be used.

Certificate

FCC – Certificate

This equipment has been tested and found to comply with Part 15 of the FCC Rules.

Operation is subject to the following two conditions:

- (1) This device may not cause harmful interference.**
- (2) This device must accept any interference received, including interference that may cause undesired operation.**

CE – Certificate

This equipment is in compliance with the requirements of the following regulations: EN 55 022: CLASS B



DISCLAIMER

Information in this document is subject to change without notice. The manufacturer does not make any representations or warranties (implied or otherwise) regarding the accuracy and completeness of this document and shall in no event be liable for any loss of profit or any commercial damage, including but not limited to special, incidental, consequential, or other damage.

No part of this document may be reproduced or transmitted in any form by any means, electronic or mechanical, including photocopying, recording or information recording and retrieval systems without the express written permission of the manufacturer.



© Copyright 2000. Black Box Corporation. All rights reserved.

1000 Park Drive · Lawrence, PA 15055-1018 · 724-746-5500 · Fax 725-746-0746