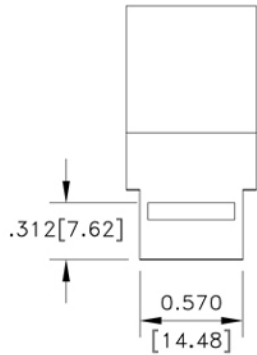
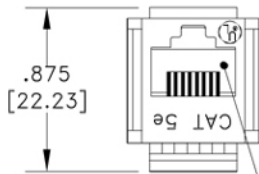


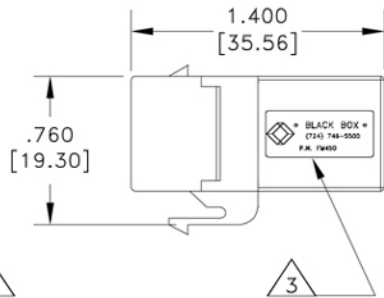
**TOP VIEW**



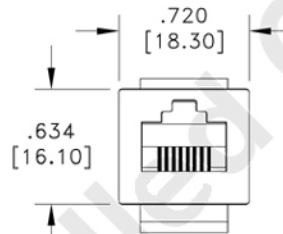
**FRONT VIEW**



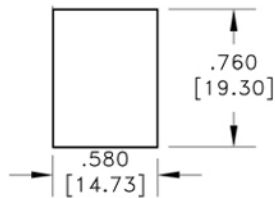
**SIDE VIEW**



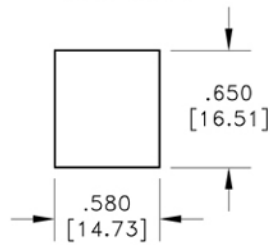
**REAR VIEW**



RECOMMENDED PANEL CUTOUT FOR SINGLE WALL PLATE AND BACK PANEL FOR DOUBLE WALL PLATE



RECOMMENDED FRONT PANEL CUTOUT FOR DOUBLE WALL PLATE



1 MATERIAL: HOUSING—ABS MOLDING COMPOUND  
TERMINALS — .014 THICK PHOSPHOR BRONZE  
PLATED WITH .000050 THICK GOLD OVER  
.000050 MINIMUM THICK NICKEL.

2. ALL DIMENSIONS SHOWN ARE MAXIMUM UNLESS OTHERWISE SPECIFIED.

3. LABEL ON EACH COUPLER TO READ AS FOLLOWS: LABEL SIZE IS (.375" X .625").



4. COUPLER PACKAGED IN A 4" X 5" CLEAR POLYBAG WITH LABEL READING AS FOLLOWS:



5. CAVITIES CONFORM TO FCC RULES & REGULATIONS PART 68, SUBPART F.

6. DIMENSIONS IN BRACKETS ARE IN MILLIMETERS.

7. MAXIMUM PANEL THICKNESS IS .062 INCH.

DESCRIPTION: IN-LINE COUPLER ASSEMBLY, 8 POSITION, ENHANCED CATEGORY 5

CHK:

APRVD:

REV.: C

DWG BY: A. MEDINA

COLOR: BLACK

DATE: 02-16-2001

MATERIAL: 1

DO NOT SCALE

DWG NO. C.D. 1510

PART NO.:

FM450