



## Micro Wireless VGA Presentation Tool

**Transform your wired projector into a high-end wireless projector.**

Includes plug-and-show, and 4-to-1 split screen.



**Customer  
Support  
Information**

Order toll-free in the U.S.: Call 877-877-BBOX (outside U.S. call 724-746-5500)  
FREE technical support 24 hours a day, 7 days a week: Call 724-746-5500 or fax 724-746-0746  
Mailing address: Black Box Corporation, 1000 Park Drive, Lawrence, PA 15055-1018  
Web site: [www.blackbox.com](http://www.blackbox.com) • E-mail: [info@blackbox.com](mailto:info@blackbox.com)

## Trademarks Used in this Manual

---

### Trademarks Used in this Manual

Black Box and the Double Diamond logo are registered trademarks of BB Technologies, Inc.

Mac and Macintosh are registered trademarks of Apple Computer, Inc.

Internet Explorer, PowerPoint, Windows, and Windows Vista are registered trademarks of Microsoft Corporation.

Any other trademarks mentioned in this manual are acknowledged to be the property of the trademark owners.

We're here to help! If you have any questions about your application or our products, contact Black Box Tech Support at **724-746-5500** or go to **blackbox.com** and click on "Talk to Black Box." You'll be live with one of our technical experts in less than 30 seconds.

### Federal Communications Commission and Industry Canada Radio Frequency Interference Statements

This equipment generates, uses, and can radiate radio-frequency energy, and if not installed and used properly, that is, in strict accordance with the manufacturer's instructions, may cause interference to radio communication. It has been tested and found to comply with the limits for a Class A computing device in accordance with the specifications in Subpart B of Part 15 of FCC rules, which are designed to provide reasonable protection against such interference when the equipment is operated in a commercial environment. Operation of this equipment in a residential area is likely to cause interference, in which case the user at his own expense will be required to take whatever measures may be necessary to correct the interference.

Changes or modifications not expressly approved by the party responsible for compliance could void the user's authority to operate the equipment.

This digital apparatus does not exceed the Class A limits for radio noise emission from digital apparatus set out in the Radio Interference Regulation of Industry Canada.

Le présent appareil numérique n'émet pas de bruits radioélectriques dépassant les limites applicables aux appareils numériques de la classe A prescrites dans le Règlement sur le brouillage radioélectrique publié par Industrie Canada.

## Instrucciones de Seguridad (Normas Oficiales Mexicanas Electrical Safety Statement)

1. Todas las instrucciones de seguridad y operación deberán ser leídas antes de que el aparato eléctrico sea operado.
2. Las instrucciones de seguridad y operación deberán ser guardadas para referencia futura.
3. Todas las advertencias en el aparato eléctrico y en sus instrucciones de operación deben ser respetadas.
4. Todas las instrucciones de operación y uso deben ser seguidas.
5. El aparato eléctrico no deberá ser usado cerca del agua—por ejemplo, cerca de la tina de baño, lavabo, sótano mojado o cerca de una alberca, etc.
6. El aparato eléctrico debe ser usado únicamente con carritos o pedestales que sean recomendados por el fabricante.
7. El aparato eléctrico debe ser montado a la pared o al techo sólo como sea recomendado por el fabricante.
8. Servicio—El usuario no debe intentar dar servicio al equipo eléctrico más allá a lo descrito en las instrucciones de operación. Todo otro servicio deberá ser referido a personal de servicio calificado.
9. El aparato eléctrico debe ser situado de tal manera que su posición no interfiera su uso. La colocación del aparato eléctrico sobre una cama, sofá, alfombra o superficie similar puede bloquea la ventilación, no se debe colocar en libreros o gabinetes que impidan el flujo de aire por los orificios de ventilación.
10. El equipo eléctrico deber ser situado fuera del alcance de fuentes de calor como radiadores, registros de calor, estufas u otros aparatos (incluyendo amplificadores) que producen calor.
11. El aparato eléctrico deberá ser conectado a una fuente de poder sólo del tipo descrito en el instructivo de operación, o como se indique en el aparato.
12. Precaución debe ser tomada de tal manera que la tierra física y la polarización del equipo no sea eliminada.
13. Los cables de la fuente de poder deben ser guiados de tal manera que no sean pisados ni pellizcados por objetos colocados sobre o contra ellos, poniendo particular atención a los contactos y receptáculos donde salen del aparato.
14. El equipo eléctrico debe ser limpiado únicamente de acuerdo a las recomendaciones del fabricante.
15. En caso de existir, una antena externa deberá ser localizada lejos de las líneas de energía.
16. El cable de corriente deberá ser desconectado del cuando el equipo no sea usado por un largo periodo de tiempo.
17. Cuidado debe ser tomado de tal manera que objetos líquidos no sean derramados sobre la cubierta u orificios de ventilación.
18. Servicio por personal calificado deberá ser provisto cuando:
  - A: El cable de poder o el contacto ha sido dañado; u
  - B: Objetos han caído o líquido ha sido derramado dentro del aparato; o
  - C: El aparato ha sido expuesto a la lluvia; o
  - D: El aparato parece no operar normalmente o muestra un cambio en su desempeño; o
  - E: El aparato ha sido tirado o su cubierta ha sido dañada.

Table of Contents

AC1132A vs. AVX-VGA-WI Comparison Chart..... 6

Quick Start Guide ..... 7

1. Specifications ..... 11

2. Overview ..... 12

    2.1 Introduction..... 12

    2.2 Features..... 12

    2.3 What’s Included ..... 13

    2.4 Hardware Description..... 14

3. Windows Client Utility ..... 15

    3.1 Starting Program ..... 15

    3.2 Login ..... 15

    3.3 Main User Interface ..... 16

    3.4 Screen Projection..... 16

    3.5 Menu Description..... 17

        3.5.1 Show Login Code..... 18

        3.5.2 Open Admin Web Page ..... 18

        3.5.3 Wi-Fi AP-Client Configuration ..... 19

        3.5.4 Searching Server ..... 19

        3.5.5 Projection Source..... 20

        3.5.6 Auto Wi-Fi Connect ..... 20

        3.5.7 Auto Power Manager ..... 20

        3.5.8 Hide UI ..... 21

        3.5.9 Advanced Screen Capture ..... 21

        3.5.10 Make WPS Token ..... 22

        3.5.11 Copy Application to Desktop..... 24

        3.5.12 Hotkeys ..... 23

        3.5.13 About..... 25

        3.5.14 Exit ..... 26

4. Mac Client Utility ..... 27

    4.1 Launch Application..... 27

    4.2 Main User Interface ..... 28

    4.3 Screen Projection..... 29

5. Web Management..... 30

    5.1 Home Page..... 30

    5.2 Download Software ..... 30

    5.3 Login Web Admin ..... 32

        5.3.1 System Status..... 32

        5.3.2 Network Setup..... 34

        5.3.3 OSD Setup ..... 35

        5.3.4 Projection Setup..... 36

        5.3.5 Change Passwords ..... 37

        5.3.6 Reset to Default..... 37





# Table of Contents/AC1132A vs. AVX-VGA-WI Comparison Chart

## Table of Contents (Continued)

5.3.7	Firmware Upgrade.....	38
5.3.8	Reboot System .....	40
5.3.9	Logout.....	40
6.	Screen Image Background Maker .....	41

**NOTE:** The AVX-VGA-WI is similar to the AC1132A, Wireless Presentation System (another Black Box product). The chart below compares the two products.

AC1132A vs. AVX-VGA-WI Comparison Chart.

		
Image		
Product Code	AC1132A	AVX-VGA-WI
Web Interface	Yes	Yes
Active Connections	256	256
Streaming HD Video (buffered)	Yes	No
4-to-1 Projection (quad screen)	Yes	Yes
1-to-4 Projection (1 laptop to 4 WPS units)	Yes	No
Conference Control	Yes	No
Audio Support	Yes (Windows only)	No
Mobishow Download for PDA/Win Module 5.0	Yes	No
DHCP Server Options	Yes	Yes
Gatekeeper Options	Yes	No
Set Background	Yes	Yes
Screen Resolutions	800 x 600 1024 x 768 1280 x 768 1280 x 800	800 x 600 1024 x 768 1280 x 768 1280 x 800
Connect to Existing AP	Yes	Yes
Wireless Standard	802.11b/g/n	802.11b/g/n
RJ-45 Network Connection	Yes	No
Projection Quality Controls	Yes	No
Product Size	4.6"H x 5.5"W x 1.06"D (11.7 x 14 x 2.7 cm)	3.75"H x 1.53"W x 0.88"D (9.52 x 3.89 x 2.24 cm)
Product Weight	0.62 lb. (0.28 g)	0.12 lb. (0.05 kg)
Antennas	(2) -2 dBi dipole antennas (external)	None

Quick Start Guide

1. Plug the AVX-VGA-WI into a projector's VGA port and power up the projector. See Figures QS-1 and QS-2.

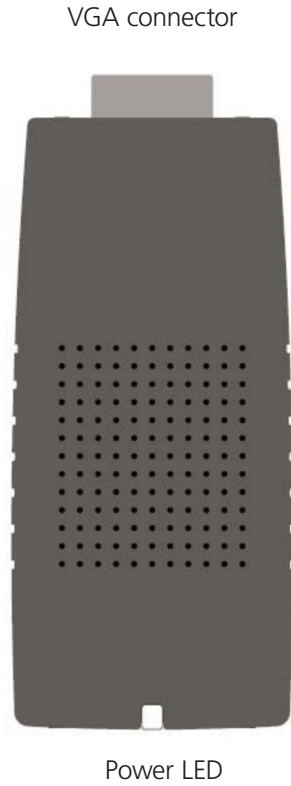


Figure QS-1. AVX-VGA-WI.

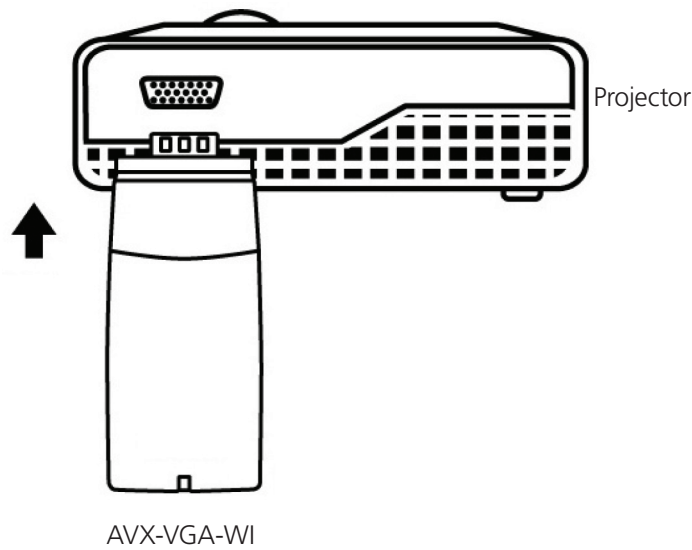


Figure QS-2. Connect the AVX-VGA-WI to the projector.

2. Power on the AVX-VGA-WI box.

When the projector shows the default menu on the screen as below, it indicates the AVX-VGA-WI unit is ready.

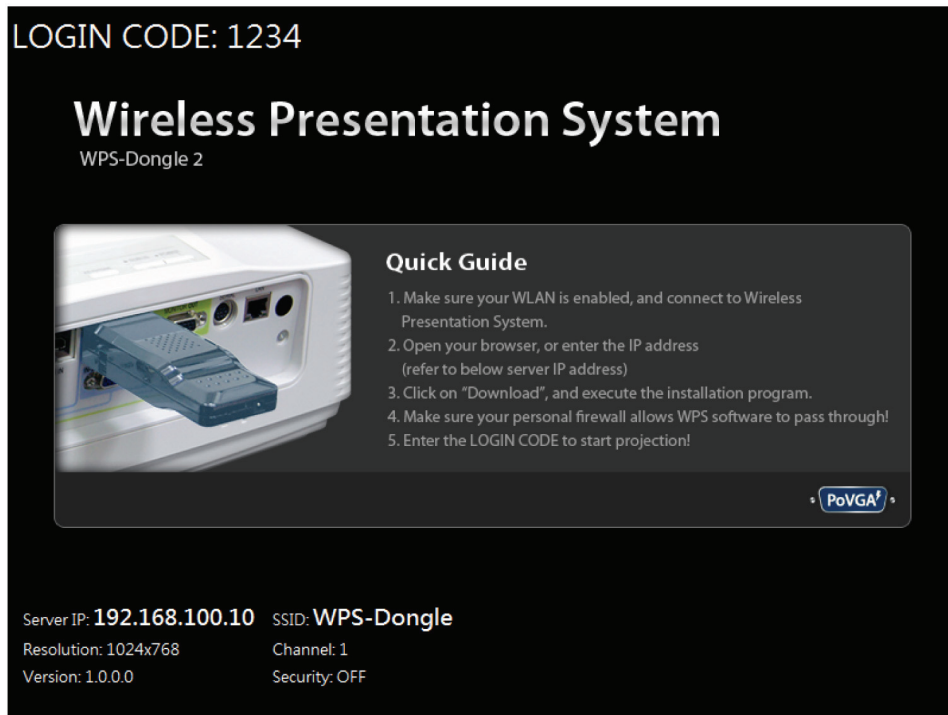


Figure QS-3. Default menu.

3. Make sure your PC WLAN is already enabled, and connect your PC with the AVX-VGA-WI unit.

4. Open your browser and it will redirect to the WPS home page automatically, or you can enter the IP address to access the Micro Wireless VGA Presentation Tool's Web home page.

The default IP address of the AVX-VGA-WI is 192.168.100.10, or refer to the IP address shown on the left corner of the projector screen.

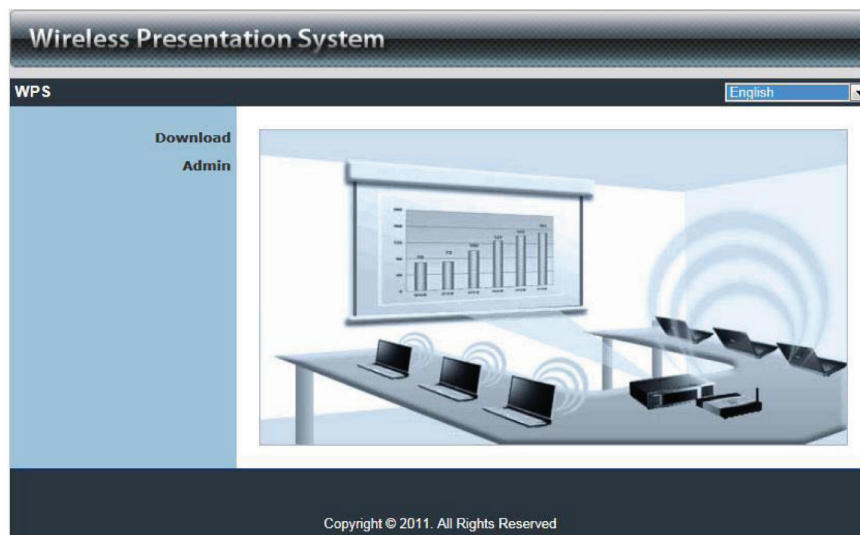


Figure QS-4. Home page.



- Download the client software (Figure QS-5). Then select the “Win7/Windows Vista/ XP/2000” or “Mac Utility” and execute the installation program (Figure QS-6).

After installing the program, you will see the Micro Wireless VGA Presentation Tool shortcut on the PC screen (Figure QS-6).

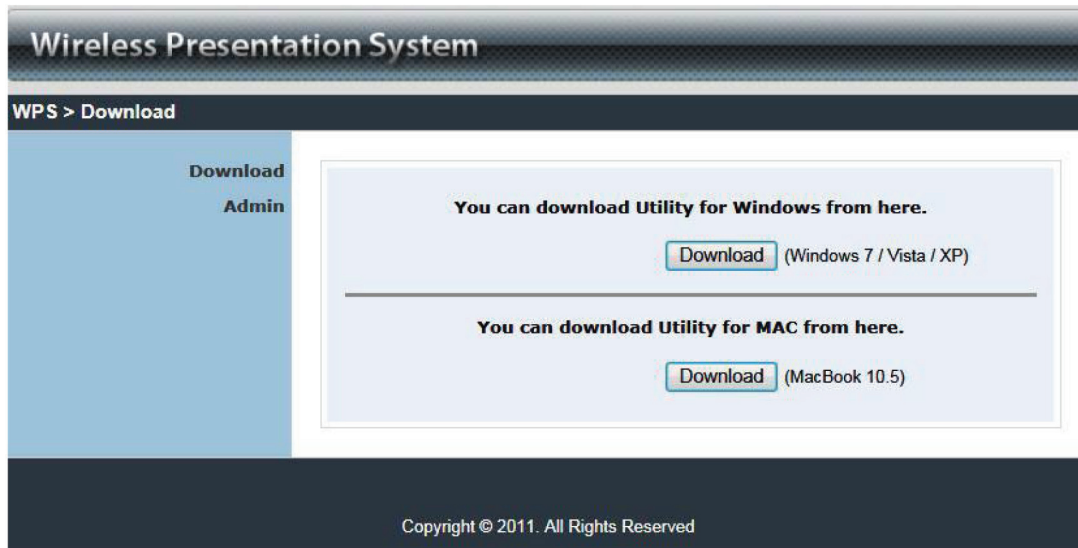


Figure QS-5. Download.

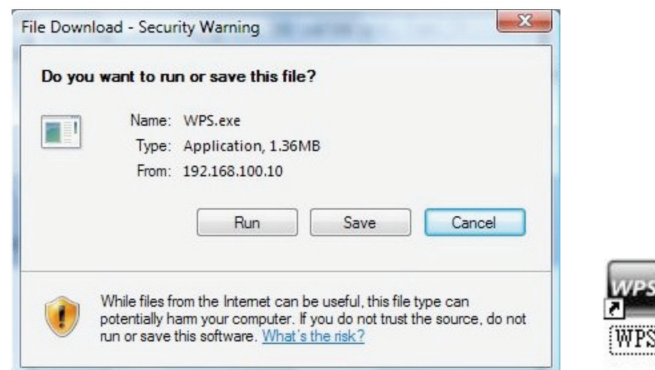


Figure QS-6. Run or Save dialog box and WPS shortcut icon.

- Make sure your personal firewall allows the AVX-VGA-WI software to pass through.
- Select the projection device.

8. Enter the Login Code that is found on the projector screen (if required) (Figure QS-7).

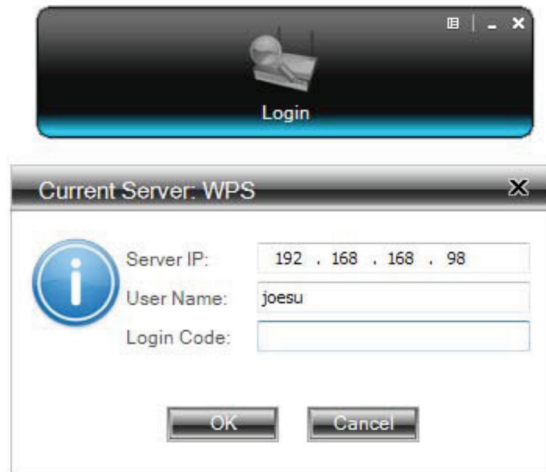


Figure QS-7. Login code on projector screen.

9. Click the “Play” button to start projection (Figure QS-8).



Figure QS-8. Start projection screen.

### 1. Specifications

**Compliance** — FCC, UL® E199780

**IP Configuration** — Automatic or manual (static)

**LAN Type** — AP mode

**LAN Protocol** — TCP/IP

**Network Connection** — Uses IEEE 802.11b/g/n 2.4 GHz, IEEE 802.3 (10BASE-T), IEEE 802.3u (100BASE-TX)

**OS Compatibility** — Windows® 2000/XP/7, Windows Vista®, Windows Mobile 5 and later, Mac® OS X 10.5 or later

**Screen Resolutions** — 800 X 600, 1024 X 768, 1280 X 768 and 1280 x 900

**Wireless Channels** — 11

**Wireless Encryption** — IEEE standard 64/128 bit WEP/WPA/WPA2-PSK

**Wireless Frequency** — 2.4 GHz

**Wireless Range** — Up to 328 ft.

**Wireless Speed** — 11 Mbps, 54 Mbps, 300 Mbps

**User Controls** — (1) Reset button

**Connectors** — (1) HD15 VGA, (1) power connector

**Power** — Source: Interface PoVGA (Power over VGA);

Input Voltage: 100–240 V, 0.3 A, 50/60 Hz;

Secondary Power: 5 VDC, 1.2 A

**Size** — 3.75"H x 1.53"W x 0.88"D (9.52 x 3.89 x 2.24 cm)

**Weight** — 0.12 lb. (0.05 kg)

### 2. Overview

#### 2.1 Introduction

The Micro Wireless VGA Presentation Tool (AVX-VGA-WI) turns your existing “wired” projector into a “high-end wireless” projector. The unit’s plug-and-show wireless projection features provide efficient and successful presentation.

##### High-Performance Wireless Projection and Audio Projection

This high-performance wireless projection tool with audio enables you to share a multimedia display with several users without using cables.

##### Plug and Show

With the accompanying plug-and-show USB token, wireless presentation becomes easy. Just link your PC/laptop to the AVX-VGA-WI using Wi-Fi, plug the token into a USB port, and in seconds, your screen will project to the connected projector.

##### 4-to-1 Split-Screen Projection

With this 4-to-1 split-screen feature, up to four PC screens can be projected to one projector at the same time. You can easily do side-by-side comparisons from four computers/laptops.

##### Macintosh® (Mac®) Wireless Projection

The Micro Wireless VGA Presentation Tool can connect to a Mac client. The Mac client software is stored in the accompanying USB token or CD-ROM. It enables wireless projection from a Mac.

##### SNMP Manager

The AVX-VGA-WI features SNMP management. Enable Simple Network Management Protocol (SNMP) protocol (Version 2c) to manage and configure one or more devices through a network.

##### Changeable Splash Screen

You can use the application “Screen Image Background Maker” to change the Splash Screen. Design the image with the message you would like to present, upload it through a Web control page, and you will have a customized starting page.

##### AP-Client Mode

You can enable the AP-Client Mode function to let the AVX-VGA-WI join the existing access point through Wi-Fi. This feature provides the flexibility of wireless network deployment in an enterprise environment.

#### 2.2 Features

- Supports Windows 7, Windows Vista, XP, 2000, and Mobile 5/6.
- Supports Macintosh (Mac) versions 10.5 and above.
- Plug and Show. No installation required. Just plug the included token into a USB port, and start wireless projection in seconds.
- Features 4-to-1 split screen projection. One projector functions as four projectors.
- Provides session security login, wireless WEP/WPA key and gatekeeper functions to protect presentation contents and keep them secure.
- You can change the splash screen image.
- SNMP Manager enables you to easily manage the devices.
- AP-ClientMode enables you to easily deploy wireless in a network enterprise.

### 2.3 What's Included

Your package should include the following items. If anything is missing or damaged, contact Black Box Technical Support at 724-746-5500 or [info@blackbox.com](mailto:info@blackbox.com).

- (1) Micro Wireless VGA Presentation unit
- (1) power supply with US, EU, and UK adapters
- (1) quick installation guide
- (1) HD15 M/F gender changer
- (1) CD-ROM containing software and this user's manual

#### USB Token Contents

The USB token consists of the following software:

##### Client Folder:

- Software for Windows® and Mac® OS, MobiShow software for Windows Mobile 5/6

##### Applications Folder:

- VDD (for virtual extended screen)
- IB Maker (for changing startup screen)
- PtG Converter (for MobiShow PtG function)
- SNMP Manager (for Wireless Presentation System device management)

### 2.4 Hardware Description

Figure 2-1 shows the AVX-VGA-WI. Table 2-1 describes its components.

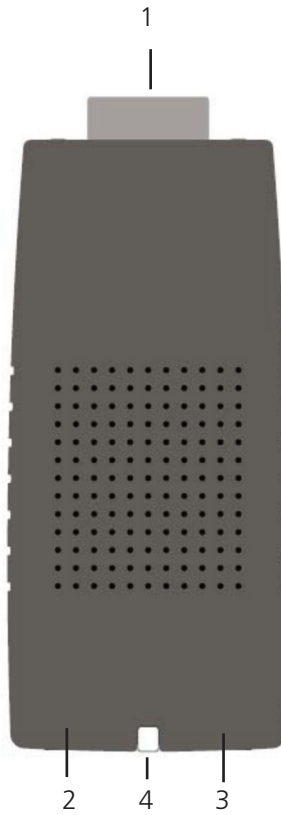


Figure 2-1. AVX-VGA-WI.

Table 2-1. Micro Wireless VGA Presentation unit components.

Number	Component	Description
1	VGA connector	Connects to projector input
2	5-VDC power connector	Links to power
3	Power LED	Lights when power to the unit is on
4	Reset button	Resets to factory defaults

### 3. Windows Client Utility

#### 3.1 Starting Program

After you download the Micro Wireless VGA Presentation Tool Windows program via the Web page successfully, follow the steps below.

1. Click on the Micro Wireless VGA Presentation Tool icon to execute the program (Figure 3-1).



Figure 3-1. Micro Wireless VGA Presentation Tool icon.

2. The program starts to search for AVX-VGA-WI automatically.
3. When it finds the Micro Wireless VGA Presentation Tool, a “Login Code” dialog box pops up on the PC screen (Figure 3-2) if a login code is needed.



Figure 3-2. Enter login code screen.

#### 3.2 Login

When the “Login Code” dialog box appears, enter the login code to start your presentation (Figure 3-3). The login code appears on the projector screen.



Figure 3-3. Login screen.

### 3.3 Main User Interface

Figures 3-4 and 3-5 show the main user interface.

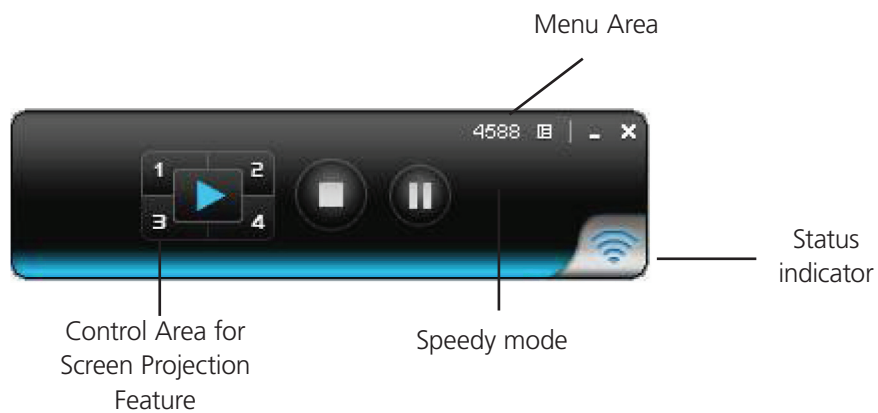


Figure 3-4. Start projection.

### 3.4 Screen Projection

Click on the “Play” button to have the full or split screen immediately project to the main screen on the display (Figure 3-7). Click on the “Pause” button to freeze the projection screen. Click on the “Stop” button to stop projecting your screen.

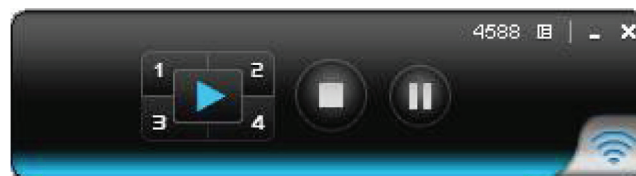









Figure 3-5. Buttons on the unit.

*NOTE: The buttons are located on the main control panel. Only the color is different.*



Table 3-1. Buttons and descriptions.

Button	Description
	Full screen projection
	Project to Split #1
	Project to Split #2
	Project to Split #3
	Project to Split #4
	Stop projecting
	Pause projecting

3.5 Menu Description

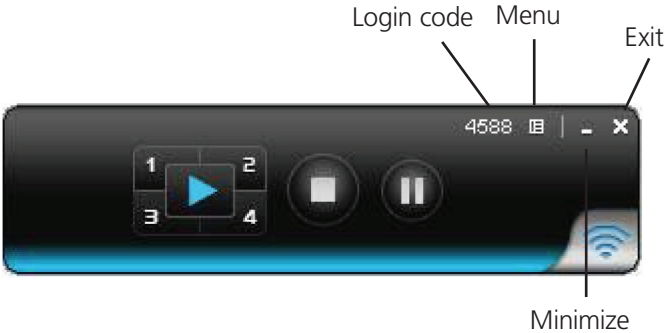


Figure 3-6. Menu description.

## Chapter 3: Windows Client Utility

### 3.5.1 Show Login Code

Click “Show Login Code.” It will display the login code on the right-upper corner of the desktop and close it automatically after 10 seconds. You can also click on the area to close this window manually.

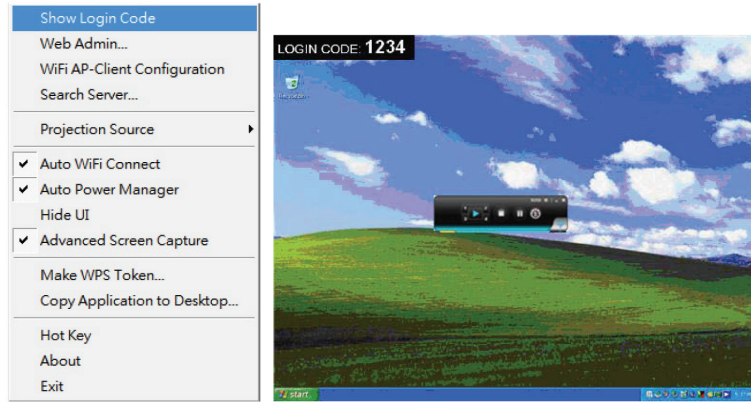
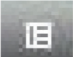


Figure 3-7. Show login code screen.

### 3.5.2 Open Admin Web Page

Click  to open the function menu and select “Web Admin” management Web page. The Web page’s detailed functions will be described in the next chapter.

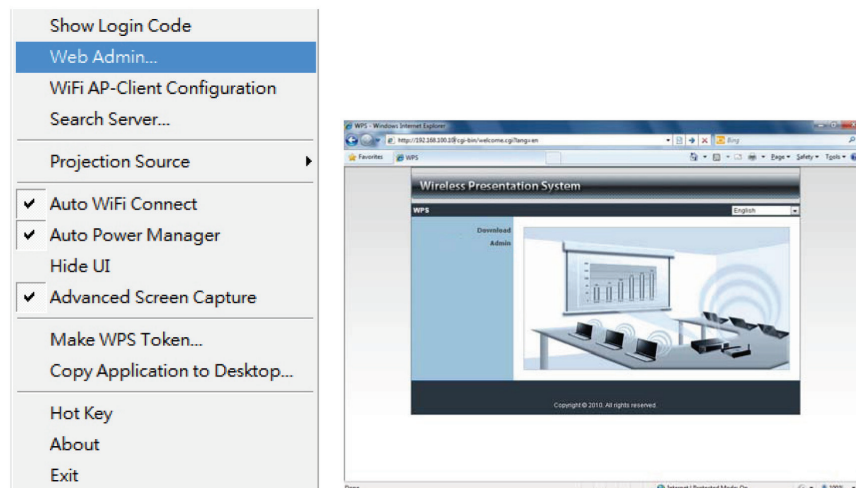


Figure 3-8. Web admin management Web page.

### 3.5.3 WiFi AP-Client Configuration

Click "WiFi AP-Client Configuration" to set AP client mode to join other access points via wireless. The other users' clients can also login to the WPS for presentation and join other access points in the network.

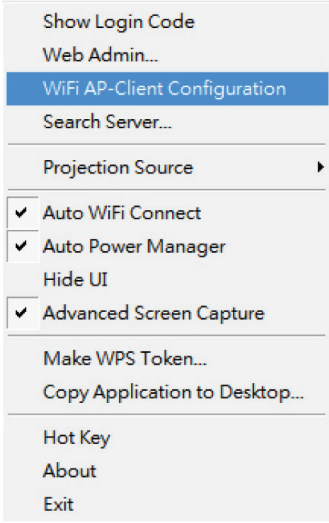


Figure 3-9. Wi-Fi AP-client configuration screen.

### 3.5.4 Searching Server

Click "Search Server" to search the WPS again.

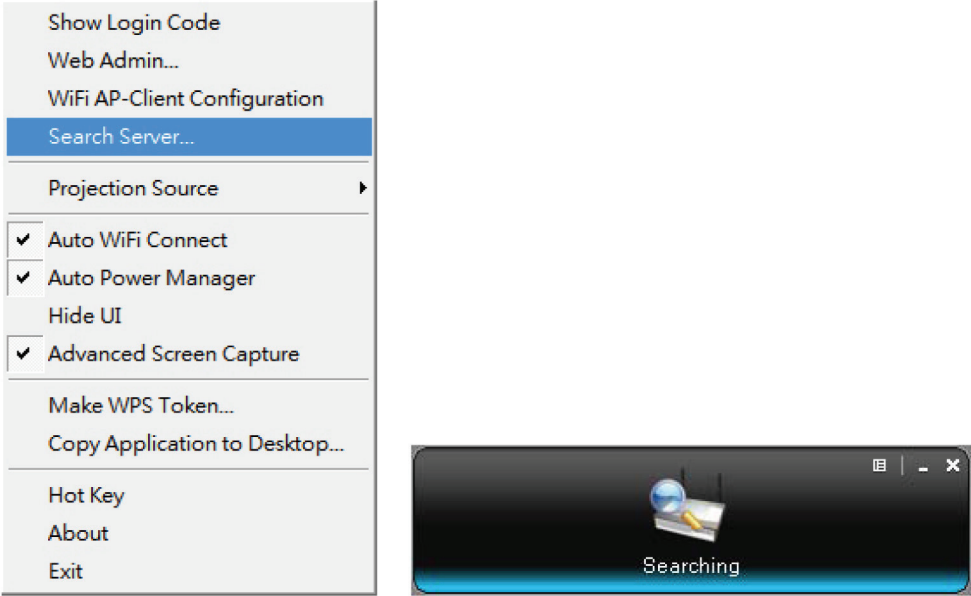


Figure 3-10. Search Server menu.

### 3.5.5 Projection Source

When you click on the “Projection Source,” you can project the main screen of the desktop or the virtual extended screen.

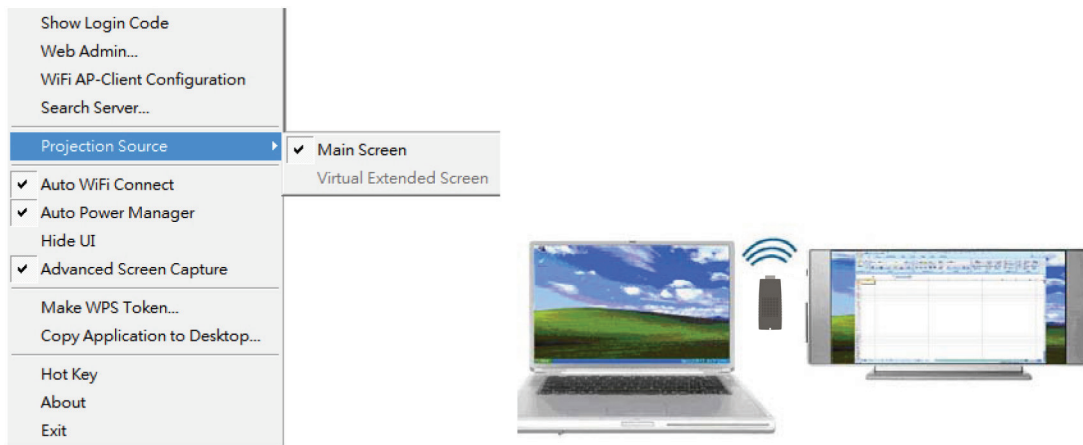


Figure 3-11. Select projection source.

P.S: Virtual Extended Screen option

You need to install the “VDD.exe” driver first. It is stored on the USB token/CD-ROM.

### 3.5.6 Auto WiFi Connect

Click “Auto WiFi Connect” to enable the auto Wi-Fi discovery and connection function for quick wireless setup.

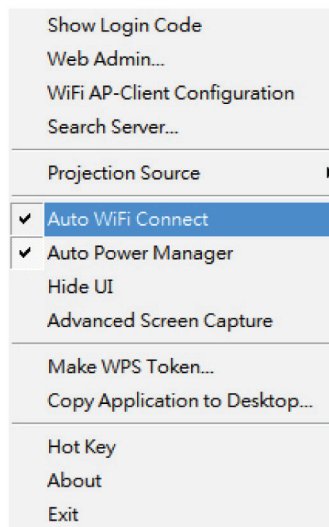


Figure 3-12. Auto Wi-Fi connect.

### 3.5.7 Auto Power Manager

For the highest projection performance, the application will turn the PC’s windows power scheme from current settings to “highest performance.” However, you can click the “Auto Power Manage” to enable or disable this function and restore your power scheme.

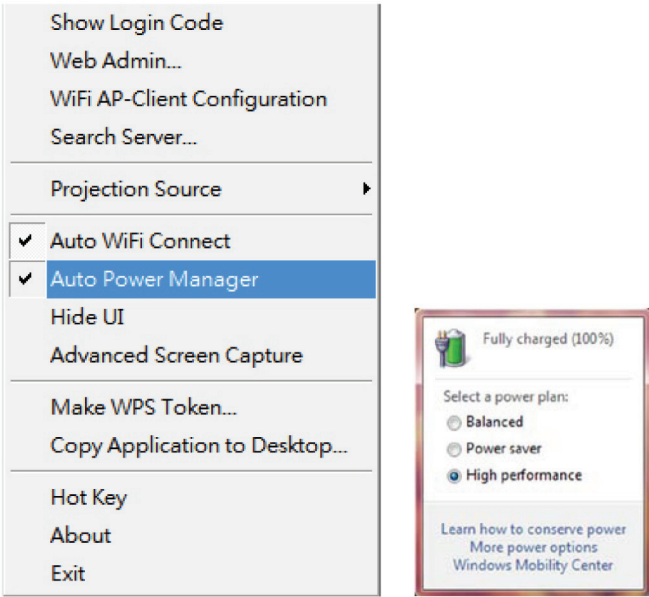


Figure 3-13. Auto power manager screen.

### 3.5.8 Hide UI

Click on "Hide UI" to hide or display the application control panel on the projection screen.



Figure 3-14. Hide UI screen.

### 3.5.9 Advanced Screen Capture

Click on "Advanced Screen Capture" and you will be able to see tip windows and other layered windows (including the main UI) on the connected display. However, the mouse cursor may blink from time to time when you are projecting your PC screen.

Disable "Advanced Screen Capture."

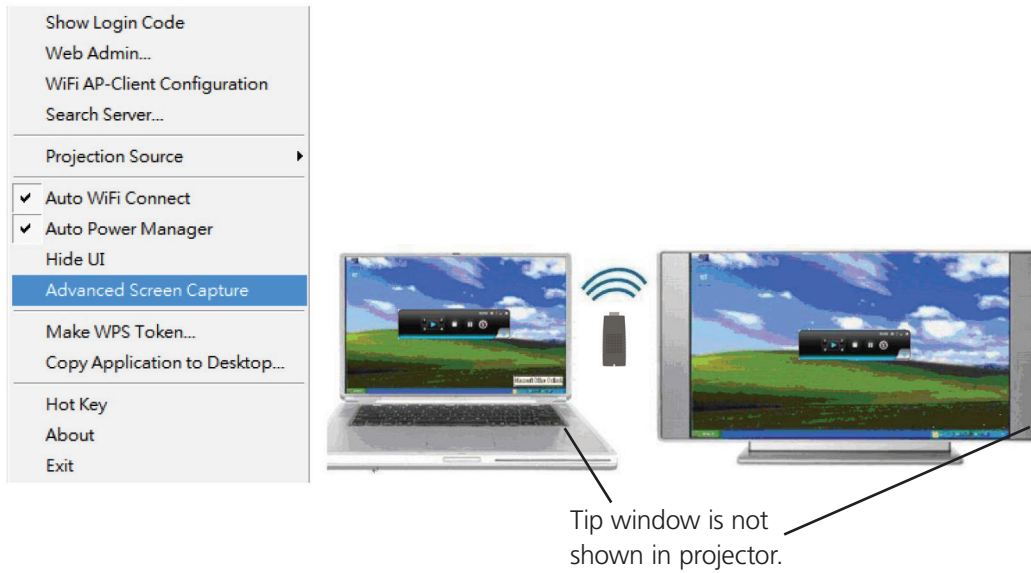


Figure 3-15. Disable advanced screen capture.

Enable Advanced Screen Capture.

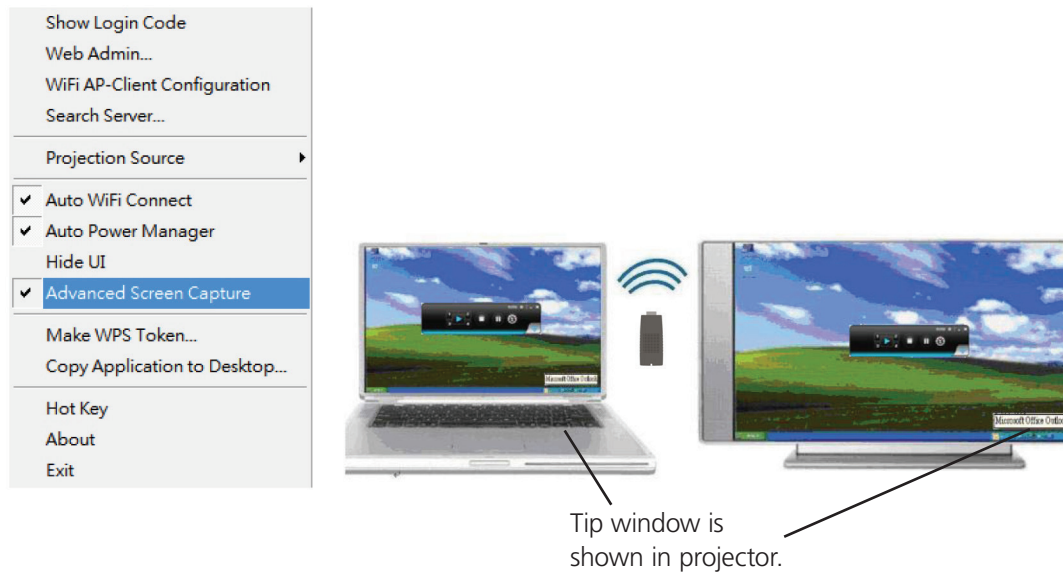


Figure 3-16. Enable advanced screen capture.

### 3.5.10 Make WPS Token

Click "Make WPS Token" to make a USB WPS Token. You can insert a USB thumb drive and follow the wizard to make the Token.

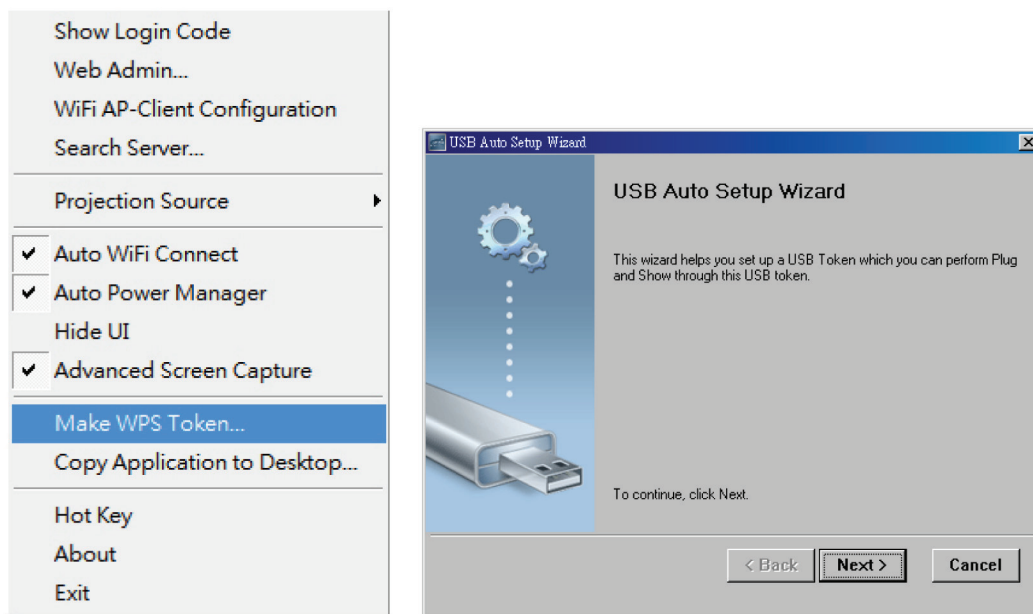


Figure 3-17. Make WPS Token screen.

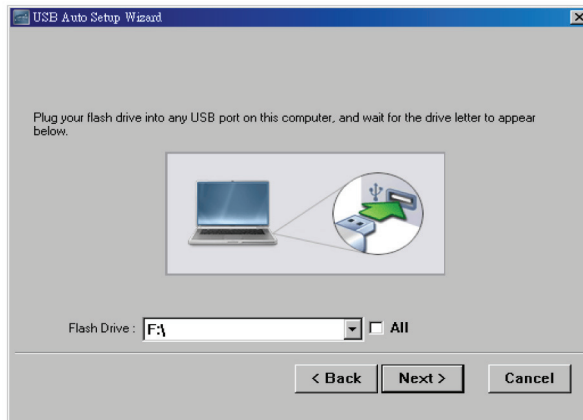


Figure 3-18. Install flash drive.

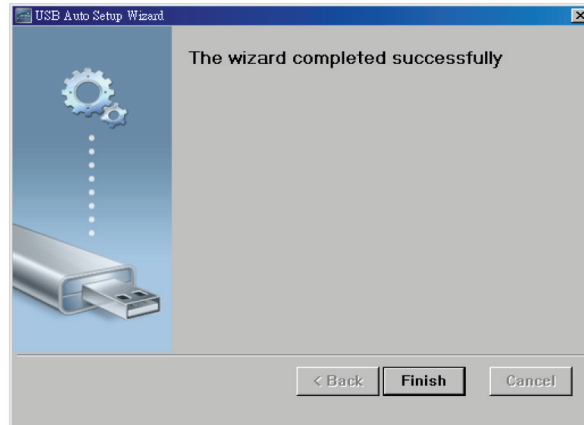


Figure 3-19. Wizard Completed screen.

### 3.5.11 Copy Application to Desktop

Click "Copy Application to desktop." It will immediately copy the application to your desktop even if you don't have the system privileges.

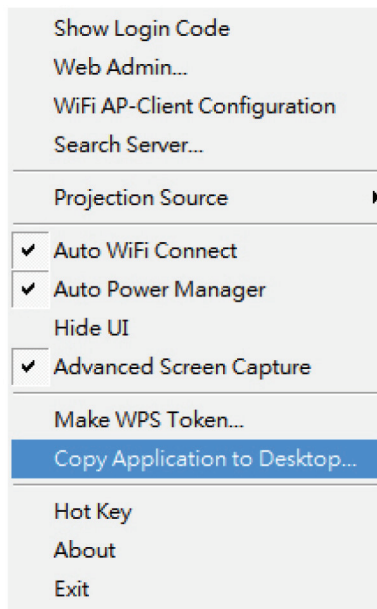


Figure 3-20. Copy application to desktop screen.



### 3.5.12 Hotkeys

Click “Hotkey” to show the hotkey guide. You can use hotkeys to control the projection with the keyboard.

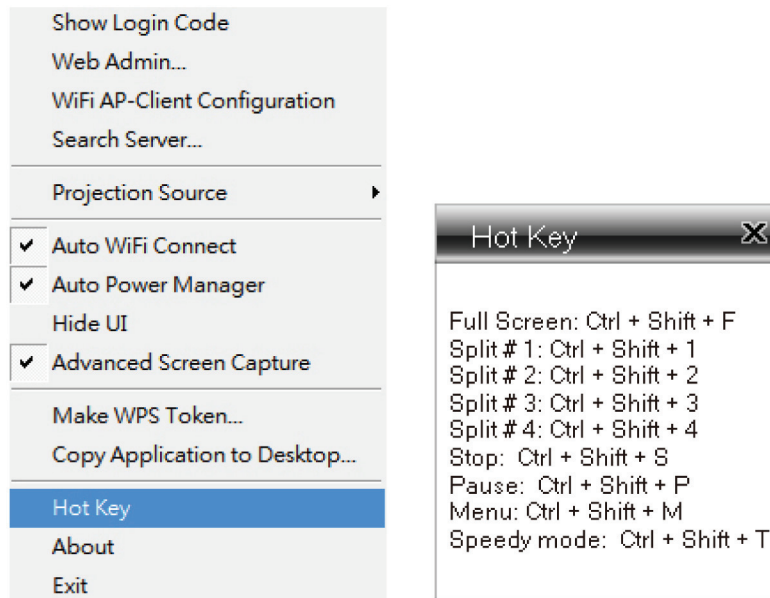


Figure 3-21. Hotkey screen.

### 3.5.13 About

Click “About” to show system information, including product model name, client version, IP address, and other information.

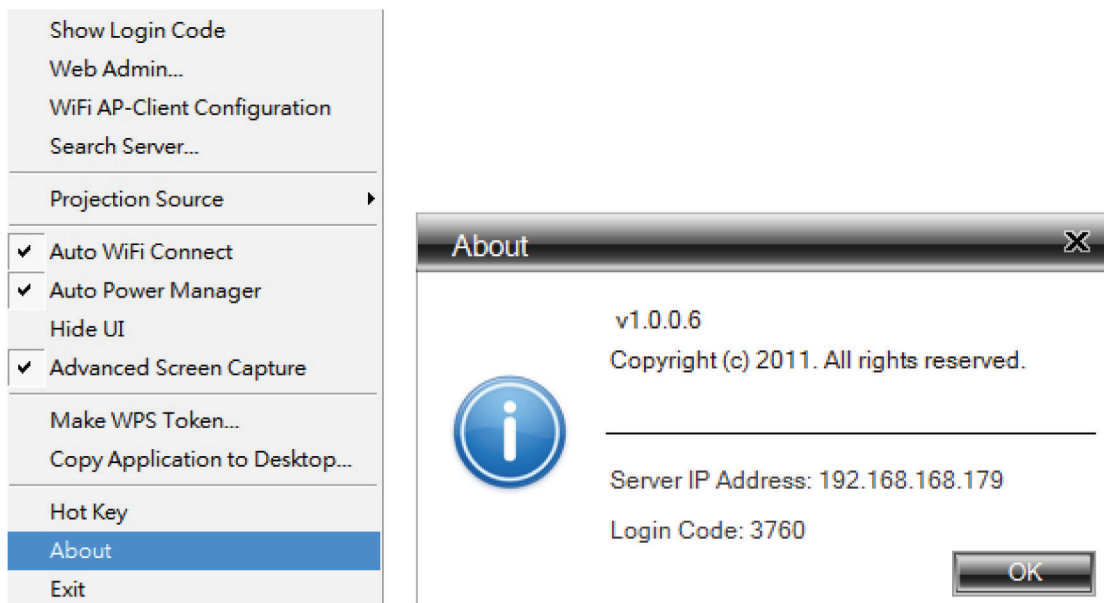


Figure 3-22. About screen.

### 3.5.14 Exit

Click "Exit" to exit this application. It will stop current playing status and close the application immediately.

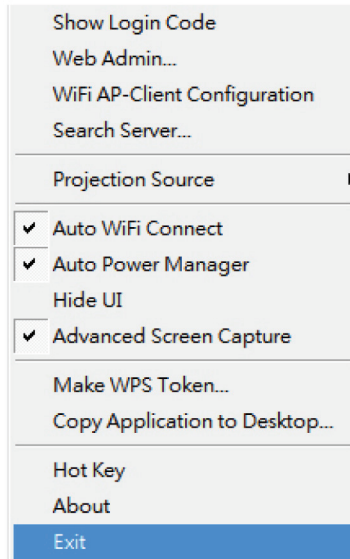


Figure 3-23. Exit menu option selected.

## 4. Mac Client Utility

### 4.1 Launch Application

1. Enable your Wi-Fi and connect to the Micro Wireless VGA Presentation Tool device (Figure 4-1).
2. Execute the Micro Wireless VGA Presentation Tool client software for Mac.



Figure 4-1. Software launching.

3. Launch the Micro Wireless VGA Presentation Tool software and enter the login code (Figure 4-2).



Figure 4-2. Login code.

# Chapter 4: Mac Client Utility

4. Start Projection (Figure 4-3).



Figure 4-3. Start projection.

## 4.2 Main User Interface

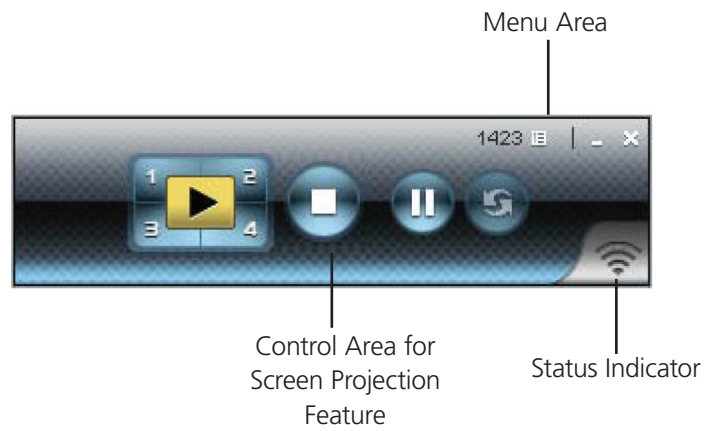


Figure 4-4. Front panel view, screen projection.








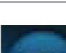
### 4.3 Screen Projection

Click the “Play” button to have the full or split screen immediately project the main screen to the display. Click the “Pause” button to freeze the projection screen. Click the “Stop” button to stop projecting your screen.



Figure 4-5. Buttons on the unit.

Table 4-1. Buttons and descriptions.

Button	Description
	Full screen projection
	Project to Split #1
	Project to Split #2
	Project to Split #3
	Project to Split #4
	Stop projecting
	Pause projecting
	Refresh screen

### 5. Web Management

#### 5.1 Home Page

1. Make sure your PC connects to the Micro Wireless VGA Presentation Tool box successfully.
2. Open your browser, and it will open the Micro Wireless VGA Presentation Tool home page (Figure 5-1) automatically.
3. If not, enter your IP address in the browser, and you will see the IP on the projector screen.
4. The default IP is 192.168.100.10.

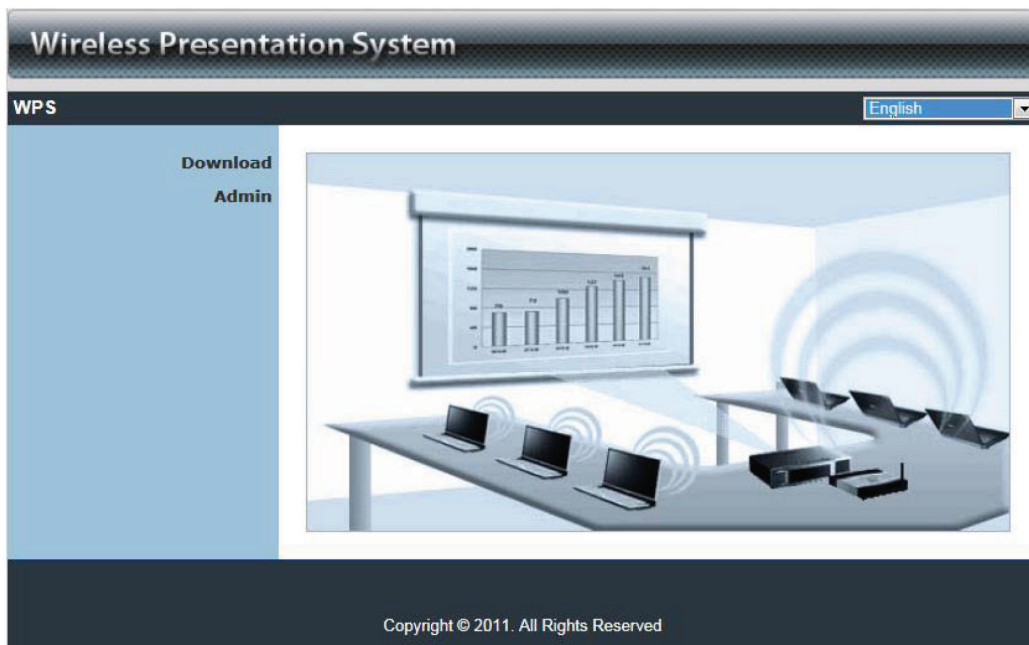


Figure 5-1. Home page.

#### 5.2 Download Software

1. Select "Download software" function.
2. Select the "Win 7/Windows Vista/XP/2000" or "Mac Utility" and execute the installation program.
3. Follow Installation Wizard instructions to proceed until the installation process is complete.
4. If you see a "Windows Security Alert" popup, then Windows firewall has blocked this program. Press the "Unblock" button to continue installation.
5. Once installation is complete, a utility shortcut appears on the screen (Figure 5-2).

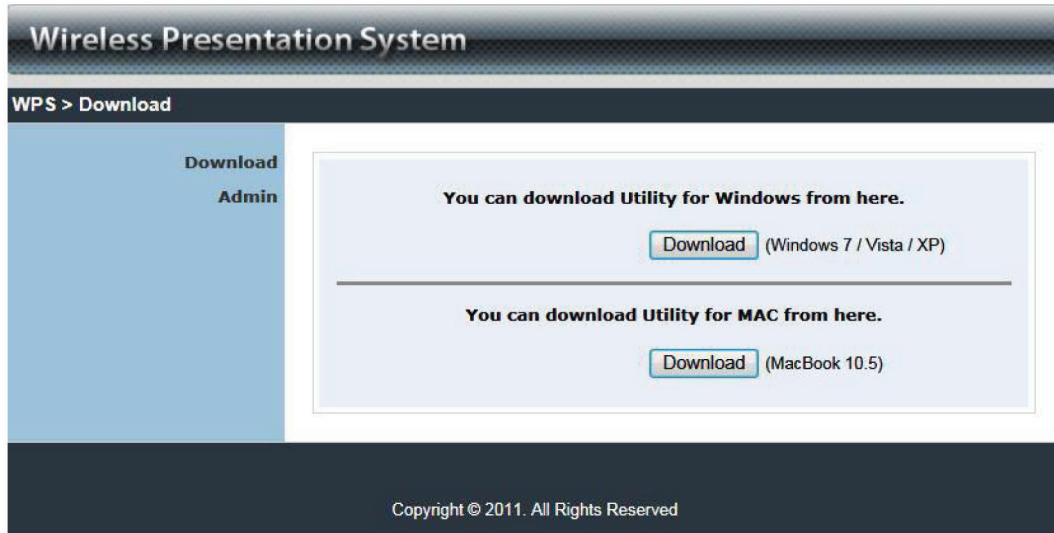


Figure 5-2. Main page.

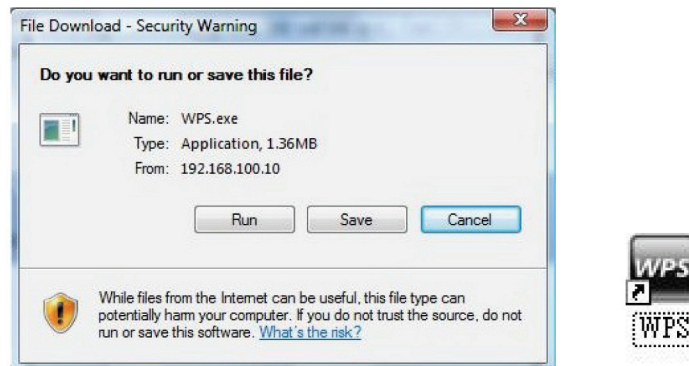


Figure 5-3. Run or Save dialog box and WPS shortcut icon.

## 5.3 Login Web Admin



Figure 5-4. Web Admin login screen.

1. Click on "Admin" and then enter the password to login to the Web page (Figure 5-4).
2. The default password is "admin."

### 5.3.1 System Status

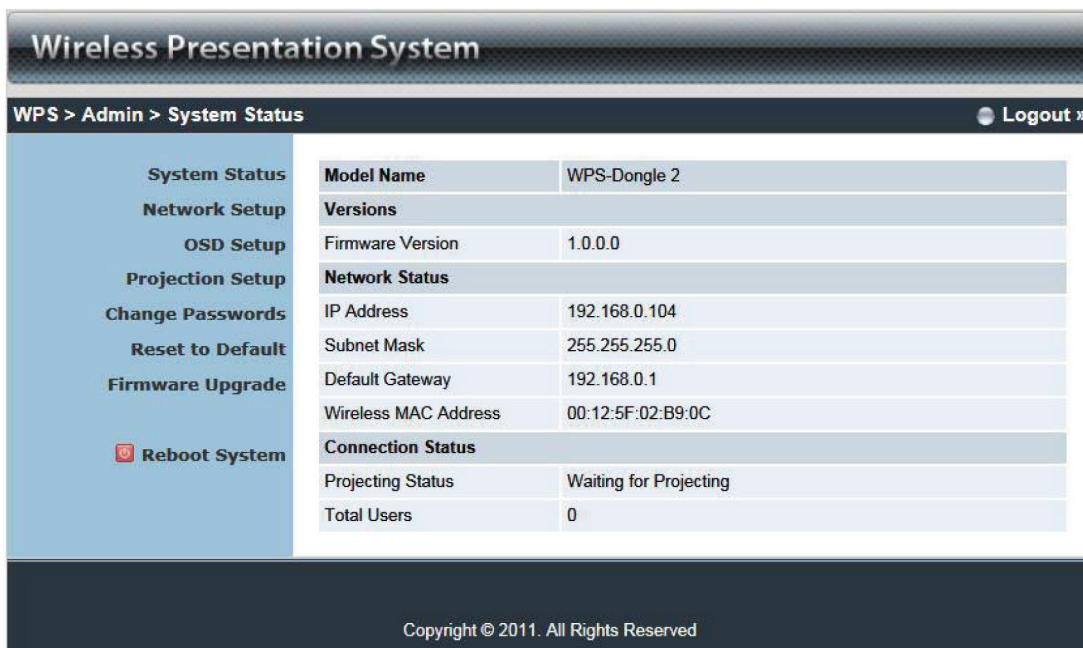


Figure 5-5. System Status screen.

Click on "System Status" to show the current system status (Figure 5-5). See Table 5-1 for a list of options.



Table 5-1. System status screen options.

Option	Description
Model name	Product model name
<b>Versions</b>	
Firmware version	4.0.0.1
<b>Network Status</b>	
IP address	IP address of WPS device
Subnet mask	Subnet mask
Default gateway	Default gateway
Wireless MAC address	Wireless MAC address
Wired MAC address	Wired MAC address
<b>Connection Status</b>	
Projecting status	Displays "Waiting for projecting" or "Projecting"
Total users	Shows how many users are logged into the WPS

## 5.3.2 Network Setup

There are several configuration options as shown below.

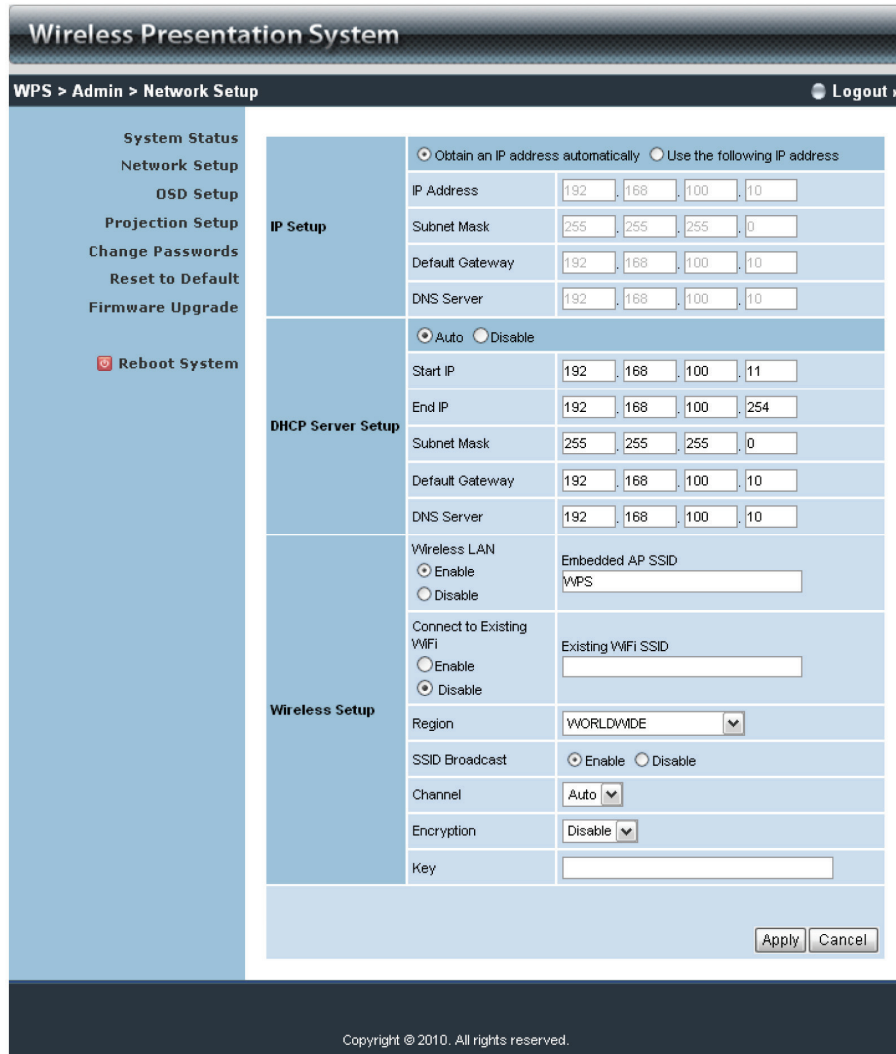


Figure 5-6. Network Setup screen.

The default setting of the Micro Wireless VGA Presentation Tool box is DHCP client.

### IP Setup:

- Select “Obtain an IP address automatically” or “Use the following IP address.”
- IP Address: The default value is 192.168.100.10.
- Subnet Mask: The default value is 255.255.255.0.
- Default Gateway: The default value is 192.168.100.10.
- DNS Server: The default value is 192.168.100.10.

## DHCP Server Setup:

- You can select “Auto Enable/Disable DHCP Server” or “Disable.”
- Start IP: The start IP address of DHCP Server.
- End IP: The end IP address of DHCP Server.
- Subnet Mask: The default value is 255.255.255.0.
- Default Gateway: The default value is 192.168.100.10.
- DNS Server: The default value is 192.168.100.10.

## Wireless Setup:

- Wireless LAN: The default value is “Enable.”
- Connect to Existing AP: Input the SSID of the Wi-Fi AP you want to connect to.
- Region: The default value is “Worldwide.”
- SSID: SSID string, max. length is 32 bytes.
- SSID Broadcast: The default value is “Enable.”
- Channel: Use to set fixed channel or Auto. “Auto” means, after powering on the Micro Wireless VGA Presentation Tool, it will scan all wireless channels and select one channel automatically.
- Encryption: Select “Disable” or one of WEP/WPA/WPA2 64 bit or 128 bit in ASCII or HEX string.
- Key: If Encryption is enabled, you have to set the key value according to the encryption mode you selected.

**Apply:** Press button to select this mode.

**Cancel:** Press button to abort action.

## 5.3.3 OSD Setup



Figure 5-7. OSD Setup screen.

## Chapter 5: Web Management

Click on the “OSD Setup” button to change the OSD wallpaper (Figure 5-7).

- **Restore Initial:** Restore to default OSD wallpaper.
- **Image File Upload:** Upload the customized OSD wallpaper. (You need to convert the image to a system-defined format first using the provided IB Maker utility which is stored on the USB token.)

### 5.3.4 Projection Setup



Figure 5-8. Projection Setup screen.

Click on the “Projection Setup” link (Figure 5-8).

- **Resolution:** XGA (1024 x 768), WXGA (1280 x 768, 1280 x 800) and SVGA (800 x 600). The default value is XGA.
- **Screen Refresh Rate:** This is the VGA output refresh rate. It provides 60 Hz and 75 Hz rates for different kinds of projectors.
- **Login Code:** Select “Disable,” “Random,” or “Use the following code” to set a specified 4-character number.
- **Apply:** Confirm and save modifications.
- **Cancel:** Cancel all the modifications.

### 5.3.5 Change Passwords



Figure 5-9. Change passwords screen.

Click on the “Change Passwords” button, to change the password value. The length of the password is up to eight characters (Figure 5-9).

- **Enter New Password:** Enter a new password you want to change for each category.
- **Confirm New Password:** Confirm new password.
- **Apply:** Confirm and save modifications.

### 5.3.6 Reset to Default



Figure 5-10. Reset to default screen.

Click on the “Reset to Default” button to restore factory default settings (Figure 5-10).

**Apply:** Confirm and continue.

### 5.3.7 Firmware Upgrade

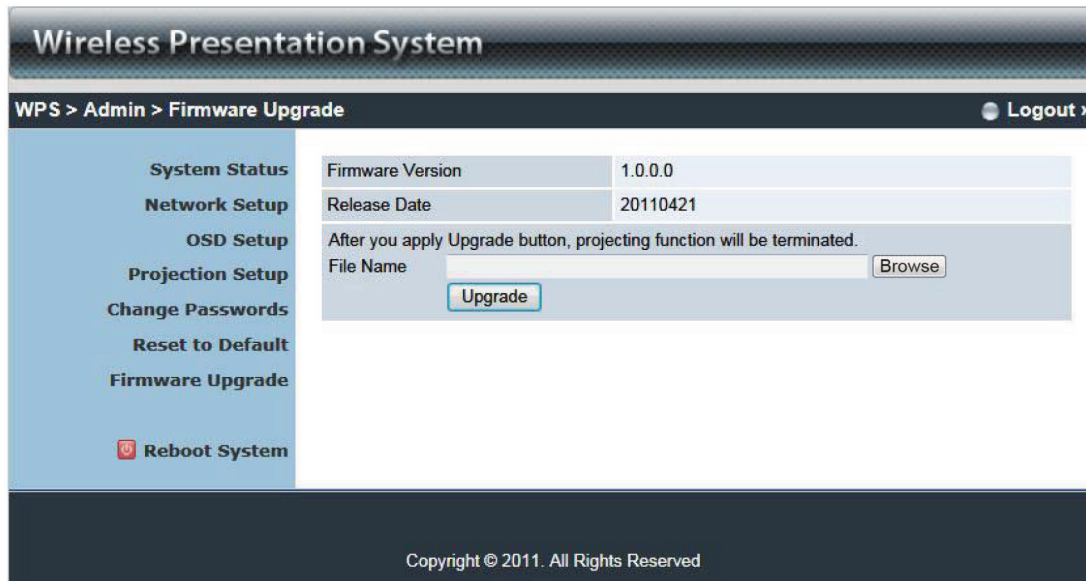


Figure 5-11. Firmware Upgrade screen.

Click on the “Firmware Upgrade” button to upgrade firmware (Figure 5-11).

1. First, get the latest firmware image file from the Black Box Web site (if available).
2. Click on the “Browse” button to specify the file name you want to upgrade.
3. Click on the “Upgrade” button to start.
4. A warning message is shown and a countdown counter will appear on the screen.
5. After a few minutes, a complete message will be shown on the screen.
6. Restart the Micro Wireless VGA Presentation Tool box for the changes to take effect (Figure 5-13).

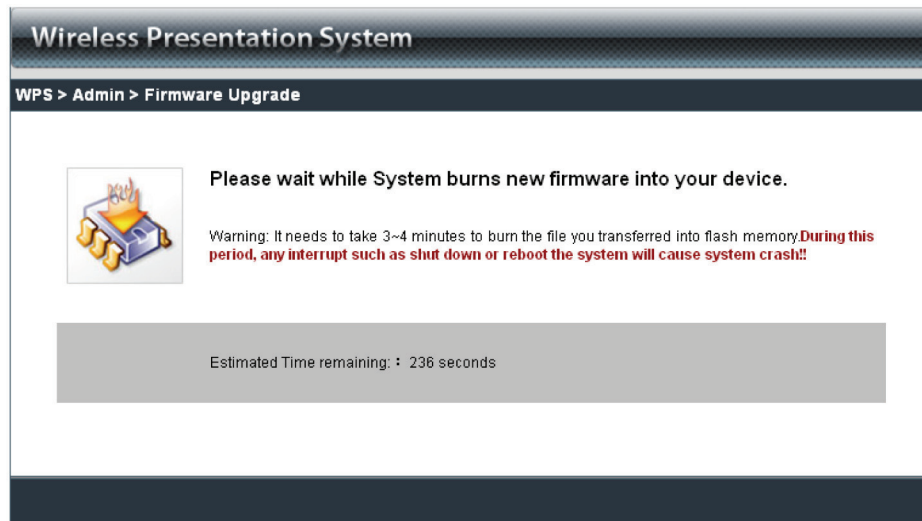


Figure 5-12. Firmware upload.



Figure 5-13. Reboot system screen.

*WARNING: Don't power off the Micro Wireless VGA Presentation Tool while firmware upgrade in progress. It might cause the box to malfunction.*

## 5.3.8 Reboot System



Figure 5-14. Reboot system button.

Click on the "Reboot System" button to restart the system (Figure 5-14).

- **Reboot:** Reboot the system automatically.

## 5.3.9 Logout

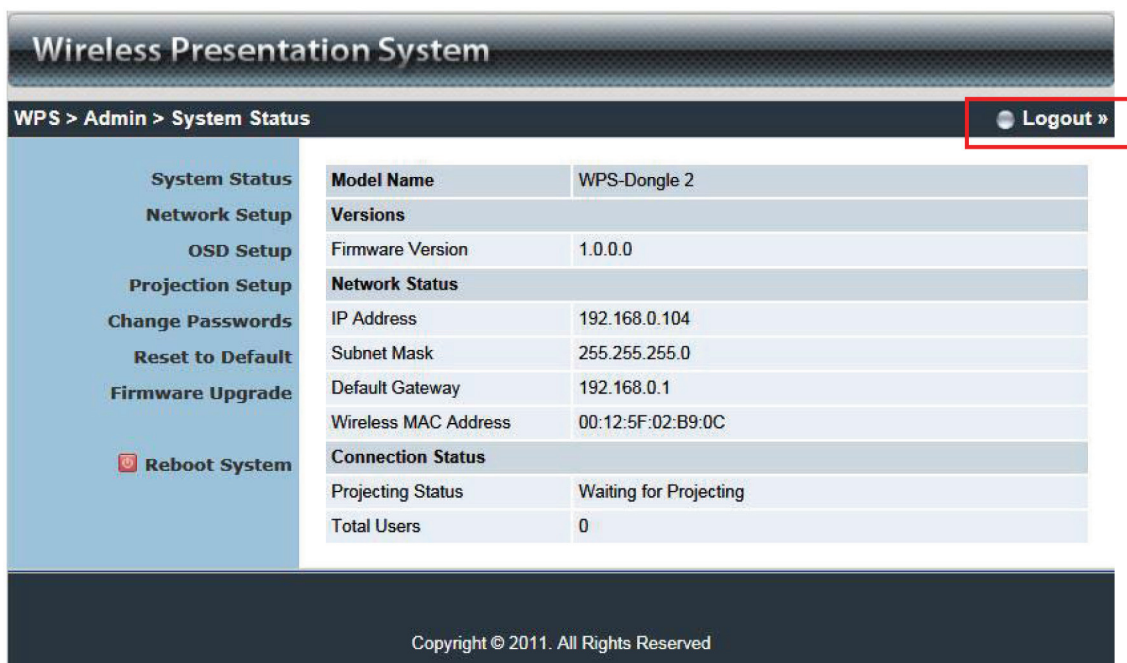


Figure 5-15. System Status screen.



## 6. Screen Image Background Maker

1. Run the "Screen Image Background Maker" and follow the wizard to convert the image file.

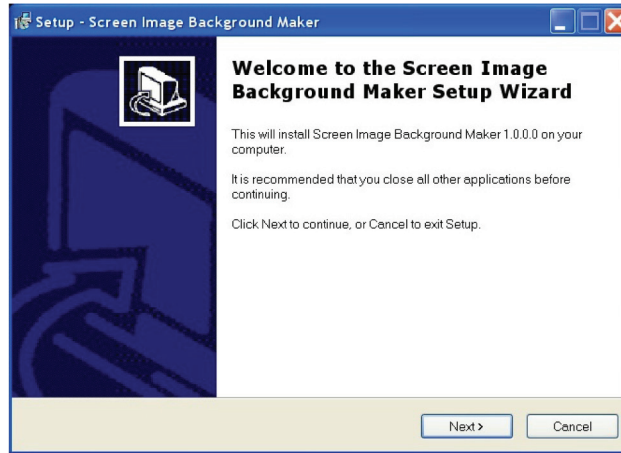


Figure 6-1. Welcome screen.

2. Press "Open" to select a file to convert.

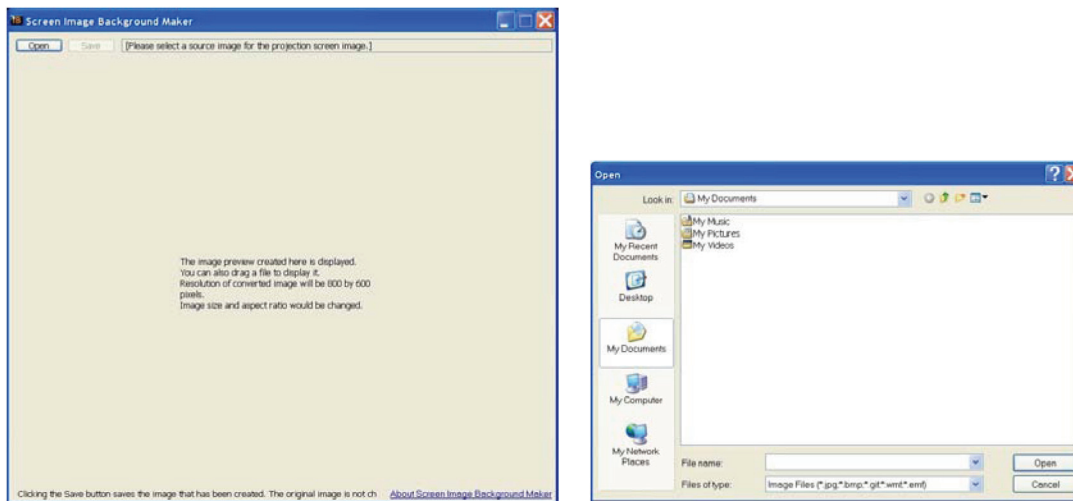


Figure 6-2. Select open.

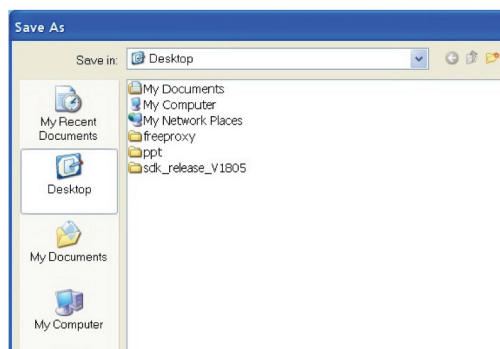


Figure 6-3. Select file to open.

## Chapter 6: Screen Image Background Maker

3. Press "Save" to save this file.

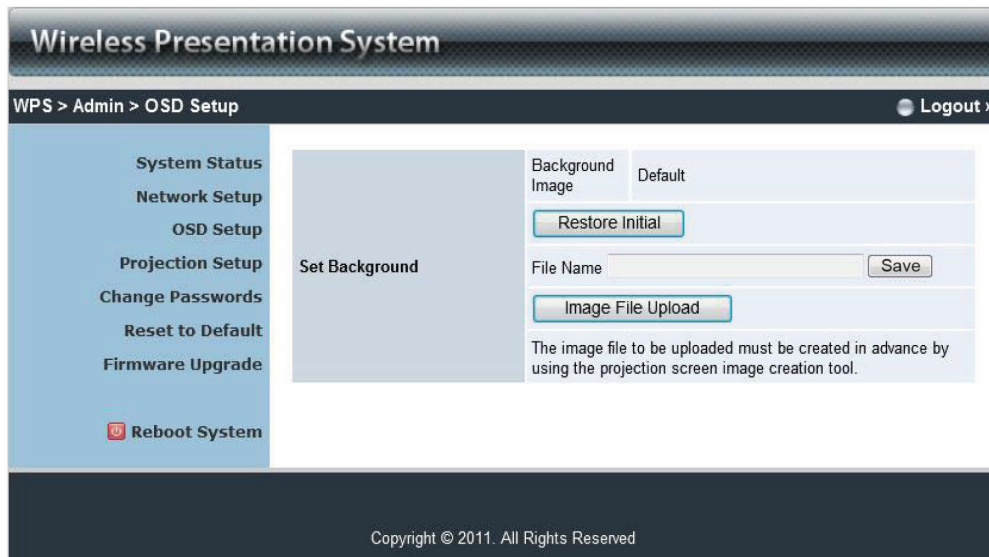


Figure 6-4. Save file.

4. Connect to the Micro Wireless VGA Presentation Tool Web page, and then select the "OSD setup" page.

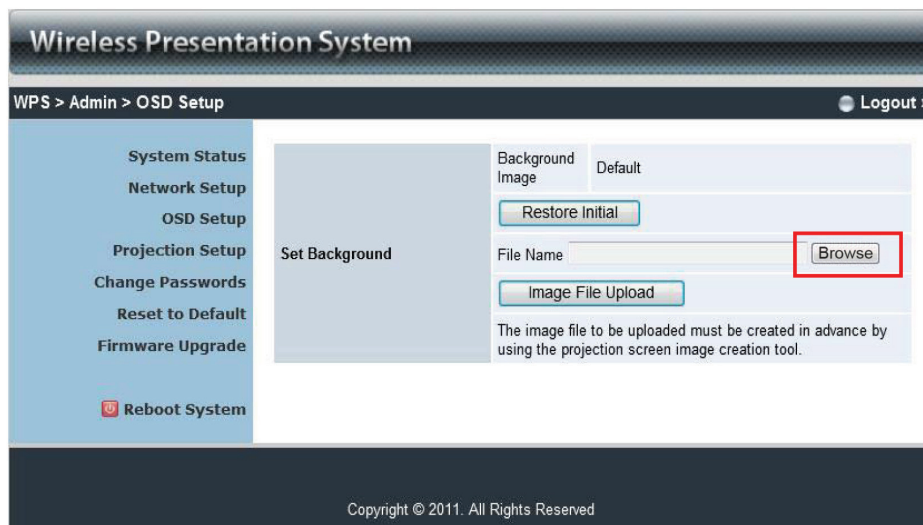


Figure 6-5. OSD Setup screen.

5. Press "Browse" to choose the \*.ib file.

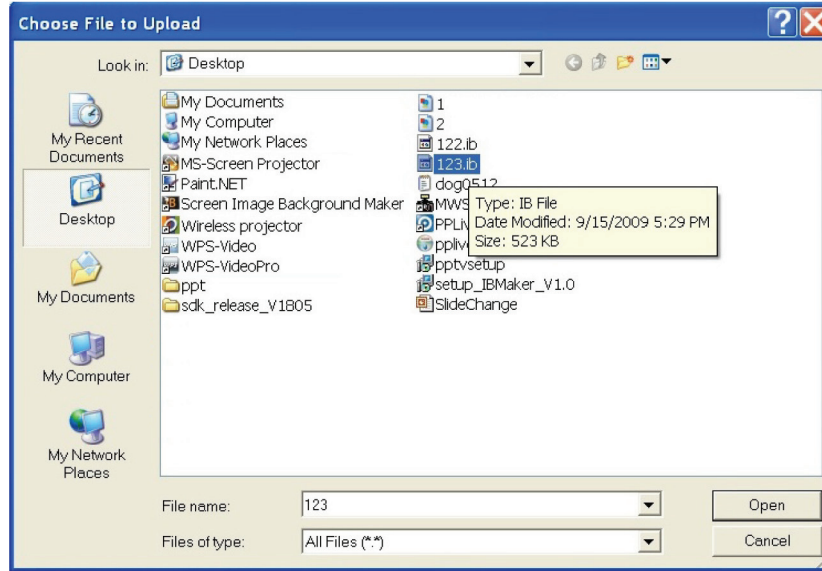


Figure 6-6. Browse backgrounds button.

6. Press “Image File Upload” to upload your background image. It will then show the popup dialog box.



Figure 6-7. Available backgrounds.

*NOTE: You may also find “Screen Image Background Maker” on the USB token.*

**Black Box Tech Support: FREE! Live. 24/7.**

Tech support the  
way it should be.



Great tech support is just 30 seconds away at 724-746-5500 or [blackbox.com](http://blackbox.com).



### About Black Box

Black Box provides an extensive range of networking and infrastructure products. You'll find everything from cabinets and racks and power and surge protection products to media converters and Ethernet switches all supported by free, live 24/7 Tech support available in 30 seconds or less.

© Copyright 2012. Black Box Corporation. All rights reserved.

AVX-VGA-WI, version 2

724-746-5500 | [blackbox.com](http://blackbox.com)