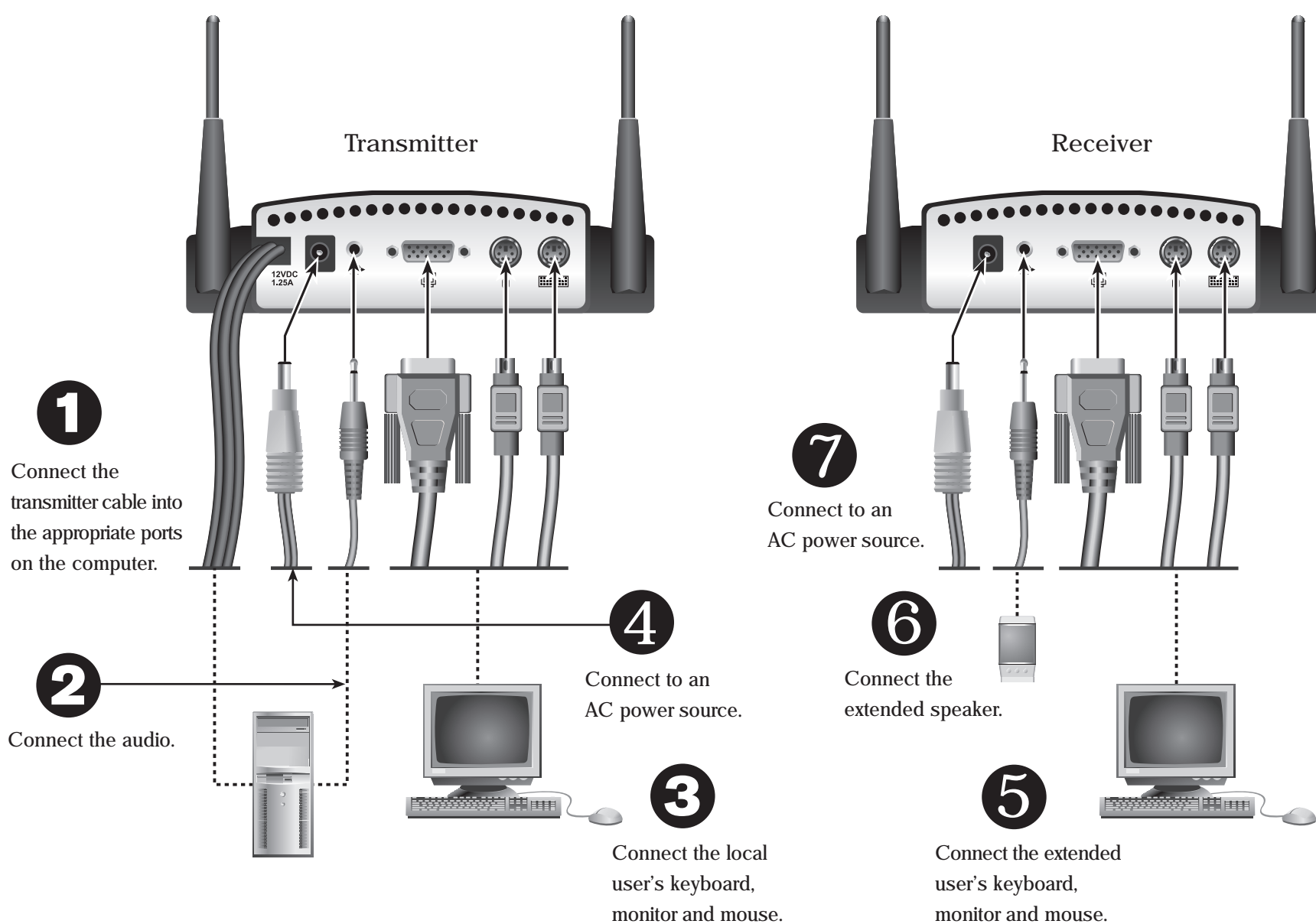




To connect a ServSwitch™ Wireless KVM Extender



1 Connecting the peripherals to the transmitter

Power down the computer that will be part of your ServSwitch Wireless system and unplug its peripherals. Place the transmitter near the computer and connect the ServSwitch Wireless transmitter cables into the computer's PS/2 keyboard, PS/2 mouse and monitor connections.

2 Connecting the audio to the transmitter

Using the supplied audio cable, connect one end to the transmitter's audio input connection and the other end to the computer's audio output connection.

3 Connecting a local user to the transmitter

Connect the local user's keyboard, monitor and mouse into the appropriately marked ports on the rear of the transmitter.

4 Powering up the transmitter and computer

Connect your transmitter to an AC power source with one of the included power supplies and power up your computer.

NOTE: Use only a Black Box-supplied power supply. The transmitter must be powered up before the computer.

5 Connecting the peripherals to the receiver

Connect the extended user's keyboard, monitor and mouse into the appropriately marked ports on the rear of the receiver.

6 Connecting the audio to the receiver

Connect your PC speakers into the receiver's audio output connection.

7 Powering up the receiver

Connect your receiver to an AC power source with one of the included power supplies and power up your computer.

Once you power up the receiver, a screen will display the message Searching for CLT-XXX, OSD Closed, Waiting on Video. Within a few seconds, the screen will go blank. A new screen will display with your desktop image.

For additional information

For further instructions on the ServSwitch Wireless hardware connection, please refer to the installer/user guide included with the extender to activate the OSD (On-Screen Display) and run the Auto Setup feature.

