



ACR1000A-T-R2	ACR1002A-R	ACR1000A-CTL-24	ACR1000A-CTL-192
ACR1002A-T	ACR1000A-CTL	ACR1000A-CTL-48	ACR1000A-CTL-288
ACR1012A-T	ACR1000A-CTL-8	ACR1000A-CTL-96	ACR1000A-CTL-ULC
ACR1000A-R-R2			

Agility™ iPATH™

Advanced USB Features

This document describes the advanced USB features supported by Agility iPATH Version 3.3 and 4.0.



**Customer
Support
Information**

Order toll-free in the U.S.: Call 877-877-BBOX (outside U.S. call 724-746-5500)
FREE technical support 24 hours a day, 7 days a week: Call 724-746-5500 or fax 724-746-0746
www.blackbox.com • info@blackbox.com

Table of Contents

1. Introduction.....	3
1.1 Device Merging.....	3
1.2 Port Control.....	3
1.3 USB Quirks	3
1.4 Flow Control.....	3
1.5 Known Device Codes	4
2. Setup Guide	5
2.1 Point-to-Point	5
2.2 iPATH Control.....	6

Disclaimer:

Black Box Network Services shall not be liable for damages of any kind, including, but not limited to, punitive, consequential or cost of cover damages, resulting from any errors in the product information or specifications set forth in this document and Black Box Network Services may revise this document at any time without notice.

We're here to help! If you have any questions about your application or our products, contact Black Box Tech Support at **724-746-5500** or go to **blackbox.com** and click on "Talk to Black Box." You'll be live with one of our technical experts in less than 60 seconds.

1. Introduction

This document explains the operation of the advanced USB features that have been included in the Agility KVM Switch and the iPATH unit from firmware version 3.0 and above.

For the advanced USB features to work, both endpoints must be on the same firmware version above 3.0.

For USB Flow control to be enabled, all endpoints need to be at version 3.5 or above.

There are four parts to the advanced USB features:

- Device merging
- Port reservation
- Flow control
- USB quirks or advanced features.

1.1 Device Merging

Merging is the process of combining multiple equivalent USB human interface devices to appear to the host computer as a single device. You can merge HID's to increase efficiency.

As long as the HID devices have the same Vendor ID (Vid) and Product ID (Pid), then the 13-device limit on devices connecting to a single USB hub can be overcome. (This is the USB specification.)

The TX unit can enumerate 13 different devices, but you can have many more devices connected to it. Merging is the default setting on the Agility receiver. There are USB devices and drivers that do not behave correctly if merging is applied. Some drivers are looking for individual serial numbers of the device. To support these devices or functionality based on the individual serial number, disable merging for devices attached to identified Rx Unit ports. All devices attached to a port that has the merge capability disabled will be treated as individual devices.

1.2 Port Control

The Agility Transmitter reports itself as a 13-port USB hub. The 13 devices are allocated ports on this hub by the lowest available port basis. Though this is sequential, it is random in nature in that the next device to connect gets the next available port. This can cause issues where by a driver is looking for a device on a set USB port. This port can be changed, when receivers are switched away and reconnected to the transmitter, and the device driver will no longer be able to find the device. To overcome this issue, you can reserve a number of USB ports on the Transmitter and then assign the reserved ports to a particular device on the receiver. This feature is often necessary when using dual touch screens on an Agility receiver. If the touch screens' port numbers changed (because the port numbers are used to assign a screen to a particular head) the control of the screens might swap over. When you reserve a port for a particular screen, this no longer happens.

1.3 USB Quirks

When you use Agility, a number of USB devices have been found to function incorrectly. The reasons for these problems have many root causes, from issues with delays, specific configuration settings, and many more. As part of the on-going support for Agility products we are actively looking for solutions. Many of these solutions are only applicable to specific devices. Rather than require the Agility system to be constantly updated with new device drivers, the advanced USB settings allow a number of patches to be applied depending on the issue identified.

The patches are controlled in the USB Advanced Settings by adding a kernel or user code in the appropriate field. There are two different input methods depending upon whether you are using the Agility in a point-to-point configuration along with the receivers' web interface, or whether the Agility Receivers and Agility Transmitters are under iPATH control. iPATH requires the codes to be entered as a decimal value and the Agility units require them to be entered as a Hex value.

1.4 Flow Control

USB flow control is included in Version V3.5 of the Agility firmware. Flow control is required for a number of more complex USB peripherals, including some touch screens and multi-function/combined devices.

Agility iPATH Advanced USB Features Update

1.5 Known Device Codes

The table below lists the devices that Black Box has come across that require an advanced USB code and their associated settings. The list is by no means exhaustive, but these are devices that we know about. This list will be updated periodically, but may not be up-to-date.

If you find issues with specific USB devices, contact Black Box Technical Support at 724-746-5500 to info@blackbox.com. We will help you determine whether there is a known patch code.

P-P refers to "Point-to-Point" mode, where the web server on the individual TX and RX units is used to set up the device.

Table 1. Device that require an advanced USB code.

USB Device	P-P Kernel Code	P-P User Code	iPATH Kernel code	iPATH User Code	FW version
Eizo cx240 screen with Colormunki	0x0	0x0AEA	0	2794	3.1
Eizo CG276 Screen	0x0	0x0AEA	0	2794	3.1
Thrust master HOTAS joystick	0x0	0x0AAC	0	2732	3.1
Mouse Trapper Office	0x4	0x0	4	0	3.1
Logitech K310 keyboard	0x4	0	4	0	3.1
Logitech illuminated keyboard	0x4	0	4	0	3.1
Microsoft wired 600 keyboard	0x0	0x0ABA	0	2746	3.1
Wacom Intuos 4 tablet	0x0	0x0	0	0	3.1
Newtek Tricaster	0x0	0x1000AAA	0	16779946	3.5
ELO ET2201L Touch screen	0x0	0x1000AAA	0	16779946	3.5
PQlabs pqp4a2101 touch panel	0x4	0x1000AAA	4	16779946	3.5
Dell KB813Combined Keyboard + CAC	0x0	0x1000AAA	0	16779946	3.5

2. Setup Guide

2.1 Point-to-Point

To set up a quirk, you need to reserve a number of USB ports. Navigate to the transmitter USB settings page. In this example, two ports are reserved.

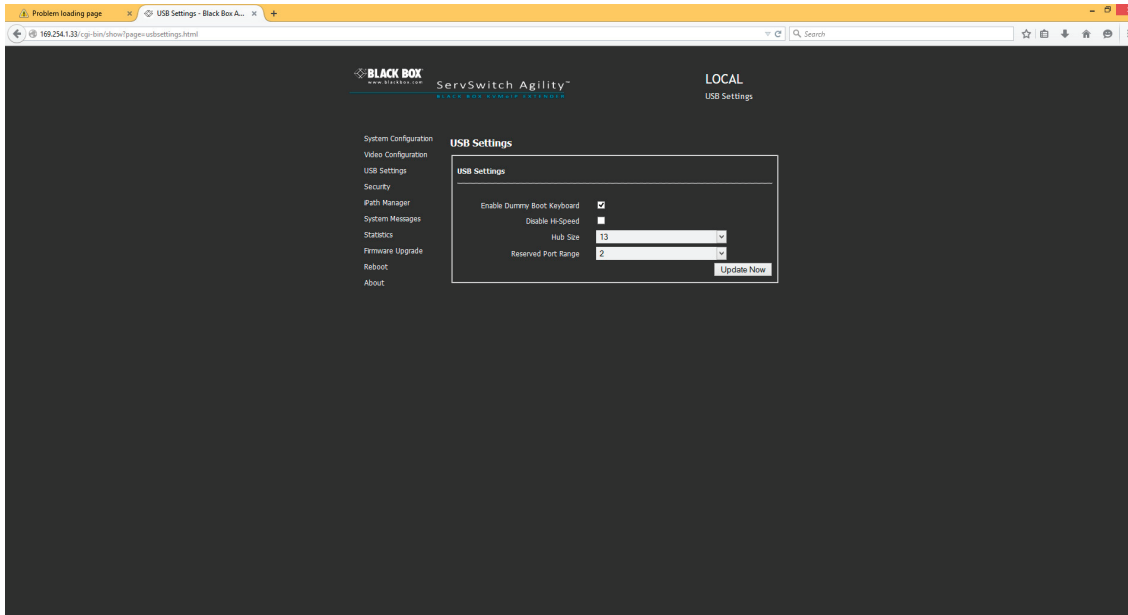


Figure 2-1. USB Settings page, Transmitter.

For the receiver, click “Enable Advanced Features,” then set the appropriate quirk codes and save.

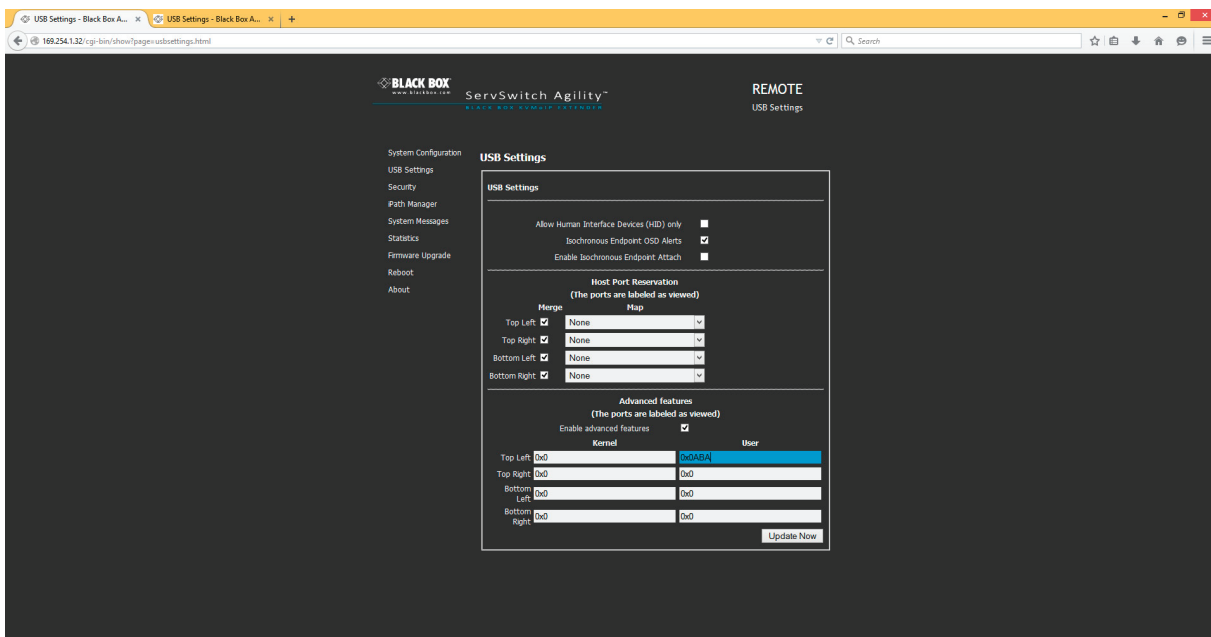


Figure 2-2. USB Settings page, Receiver.

Agility iPATH Advanced USB Features Update

2.2 iPATH Control

From iPATH, ensure that a number of USB ports are reserved. You can do this from the global or local settings.

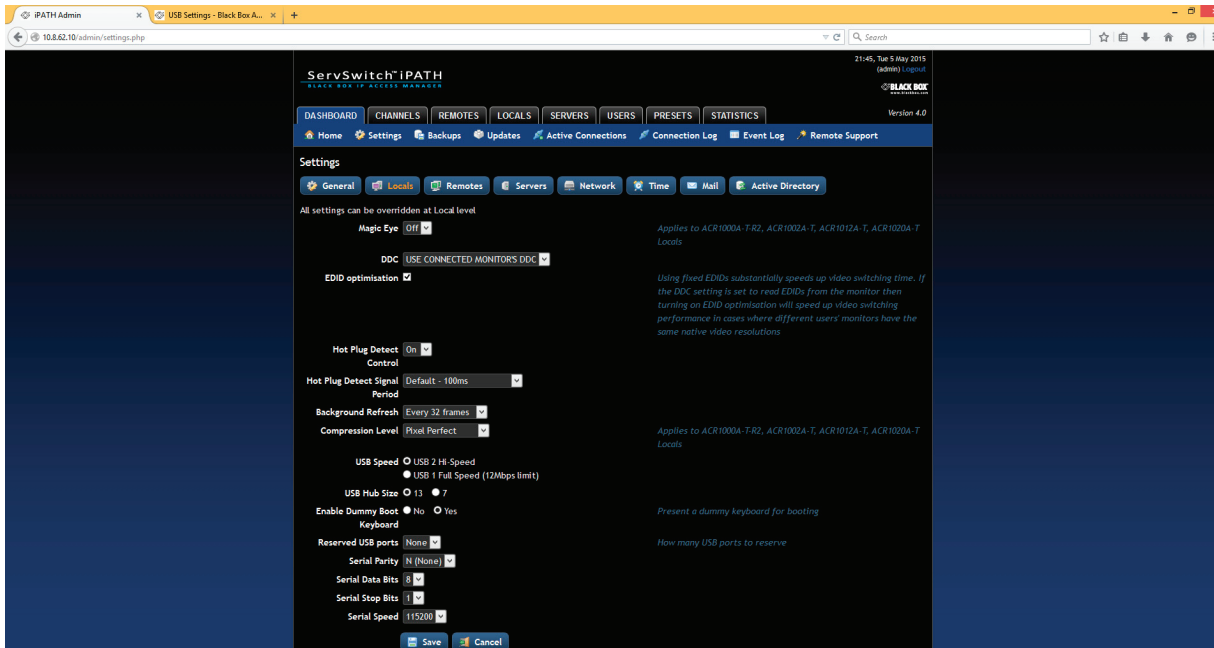


Figure 2-3. IPATH Settings page, Dashboard selected.

At the receiver, select a device from the list or create a new device if you have been given a new code to try. To determine which firmware version supports which feature, refer to the list in this document.

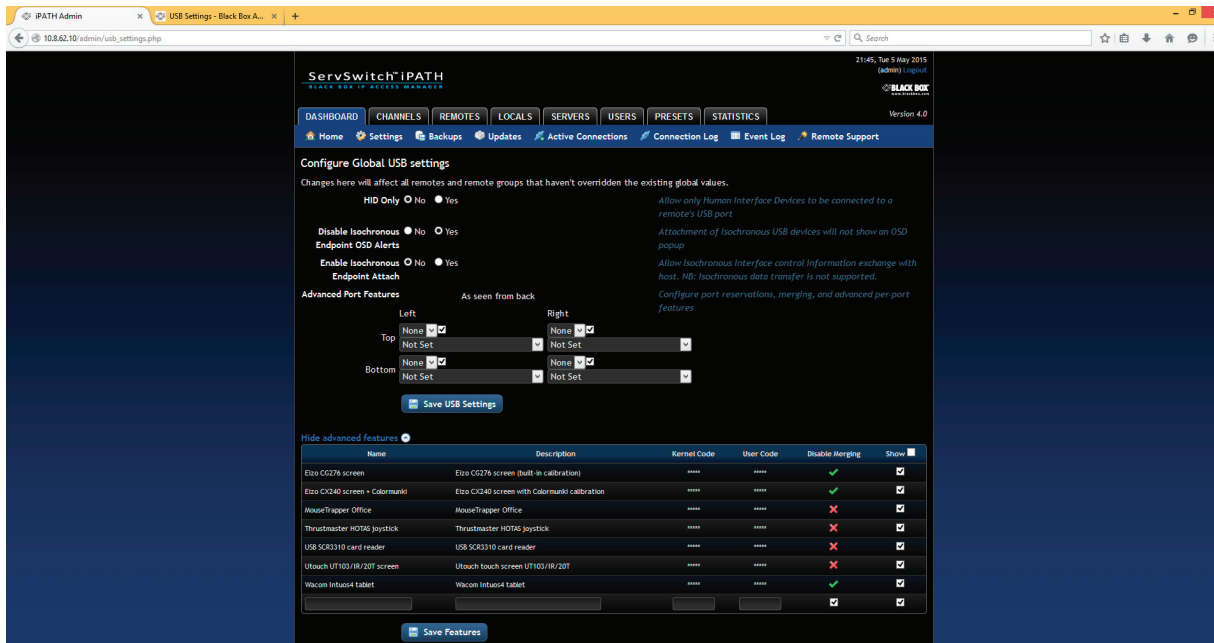


Figure 2-4. iPATH Settings page, Receivers selected.

Black Box Tech Support: FREE! Live. 24/7.

Tech support the
way it should be.



Great tech support is just 60 seconds away at 724-746-5500 or blackbox.com.



About Black Box

Black Box provides an extensive range of networking and infrastructure products. You'll find everything from cabinets and racks and power and surge protection products to media converters and Ethernet switches all supported by free, live 24/7 Tech support available in 60 seconds or less.

© Copyright 2015. Black Box Corporation. All rights reserved. Black Box® and the Double Diamond logo are registered trademarks of BB Technologies, Inc. Any third-party trademarks appearing in this manual are acknowledged to be the property of their respective owners.

Agility Advanced USB Features, version 2

724-746-5500 | blackbox.com