

ETHERNET PRINT SERVER



Key Features

- ▶ Supports most major operating systems
- ▶ Auto-sensing Ethernet connections.
- ▶ High-speed bi-directional parallel ports
- ▶ Servers connect directly to the Ethernet network via an integral 10base-T connector
- ▶ Quick and easy installation
- ▶ Firmware upgradeable

Conveniently place shared printers anywhere in an office. With the Ethernet Print Servers, users running different operating systems (Windows, Novell, Unix, and more) and different LAN protocols (IPX/SPX, TCP/IP, NetBEUI, and many others) on Ethernet networks can share printer resources.

Three models are available:

PB3701AE-C: The One Port Mini Pocket Size Print Server, has one high-speed, direct attachable, bi-directional parallel port and one RJ-45 auto-sensing Ethernet connector.

PB3701AE: The One Port Palmtop Print Server offers 1 bi-directional high-speed parallel port with a DB25 F connector.

PB3703AE: The 3-Port Desktop Print Server offers an affordable and efficient network printing solution for existing 10-Mbps networks and provides an easy migration path to 100-Mbps Fast Ethernet. It provides three high-speed bi-directional parallel ports. The network port on the Server automatically senses if your network is running at 10 or 100 Mbps and configures accordingly.

All three servers connect directly to the Ethernet network via a RJ-45 port. The wizard driven installation for both the print server and PC clients provides complete plug-N-play setup processes.

The servers also feature SNMP management, web management, email printing and other interesting features which offer maximum printing flexibility and manageability at an extremely low cost and with a minimum setup and maintenance required.

Specifications

Systems supported:

Peer-to-Peer printing for Windows 95/98/Me/NT/2000
 Windows NT/2000 Server-Based Printing
 Netware 3.x/4.x/5.x
 Linux/Unix, UnixWare, Solaris, IBM AIX and HP-UX

Printer ports:

LPB3701AE-C: (1) bi-directional parallel, Centronics F
 LPB3701AE: (1) bi-directional parallel, DB25-F
 LPB3703AE: (3) bi-directional parallel, DB25-F

Ethernet port: RJ-45 10/100
 Autosensing.

Management:

SNMP, web-based management,
 Windows configuration Utility

Protocols:

Supports IPS, NetBEUI and TCP/IP protocols
 Power:
 LPB3701AE-C: 6VD, 0.5A
 LPB3701AE: 6VDC, 1A
 LPB3703AE: 12VDC, 1A

Size and Weight:

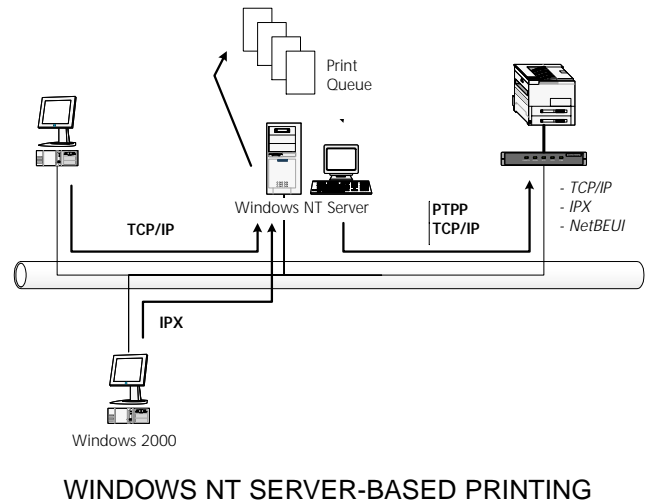
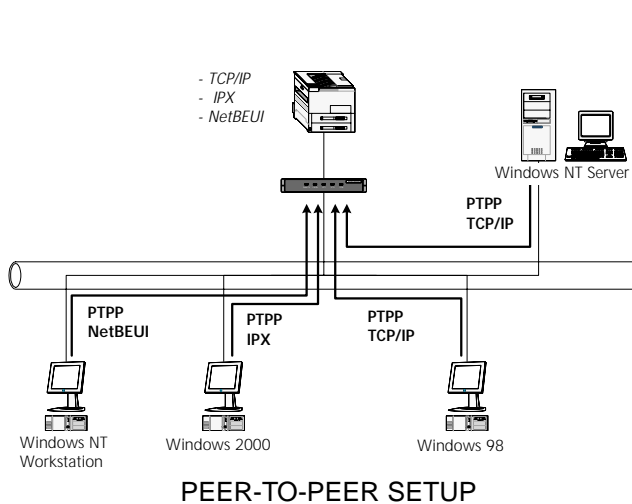
LPB3701AE-C: 6.0W x 2.3H x 5.9D (cm); 300.00 g.
 LPB3701AE: 10.7W x 2.8H x 9.7D (cm); 750.00 g.
 LPB3703AE: 18.5B x 3.5H x 10.5D (cm); 1050 g

Technically Speaking

Our print server system provides PTPP (Peer-to-Peer Printing) driver and utilities for Windows 95/98/NT/2000 users. PTPP (Peer-to-Peer Printing) supports IPX, TCP/IP, and NetBEUI protocols. While printing after installation, PTPP will automatically select the proper transport protocol to connect to the print server depending on the protocols installed in each computer (client computer may only have IPX or TCP/IP installed). In Windows network environment, other than the Peer-to-Peer network printing architecture described, we also offer the Server-Based Printing architecture for Windows NT/2000 server. Only one Windows NT/2000 is required to have Windows PTPP (Peer-to-Peer Printing) driver installed and share the printing service on the network. Other network users can simply connect to the server and access the shared printer.

What's Included

- Print Server
- CD-Rom with software and manual
- Quick Installation Guide
- Power Supply



Ordering information

ITEM

CODE

Ethernet Print Servers

Mini-Pocket 1-port print serverLPB3701AE-C
 Palmtop 1-port print serverLPB3701AE
 Desktop 3-port print serverLPB3703AE

Black Box Network Services - The world's largest network services company

We are, with 25 years of experience, the world leader in network infrastructure services.

On the Phone — no charge, answer calls in less than 20 seconds, find the right product with our technical experts.

On-site — superior design and engineering. Certified installations, end-to-end service.

On-line — receive technical knowledge on-line, including technology overviews, Black Box Explains and the Knowledge Box.

Most comprehensive TECHNICAL SUPPORT — our best Product! Free hotline TECH SUPPORT!

The world's best customer service — Custom design services and products, the best warranties, money-saving discount programs.