

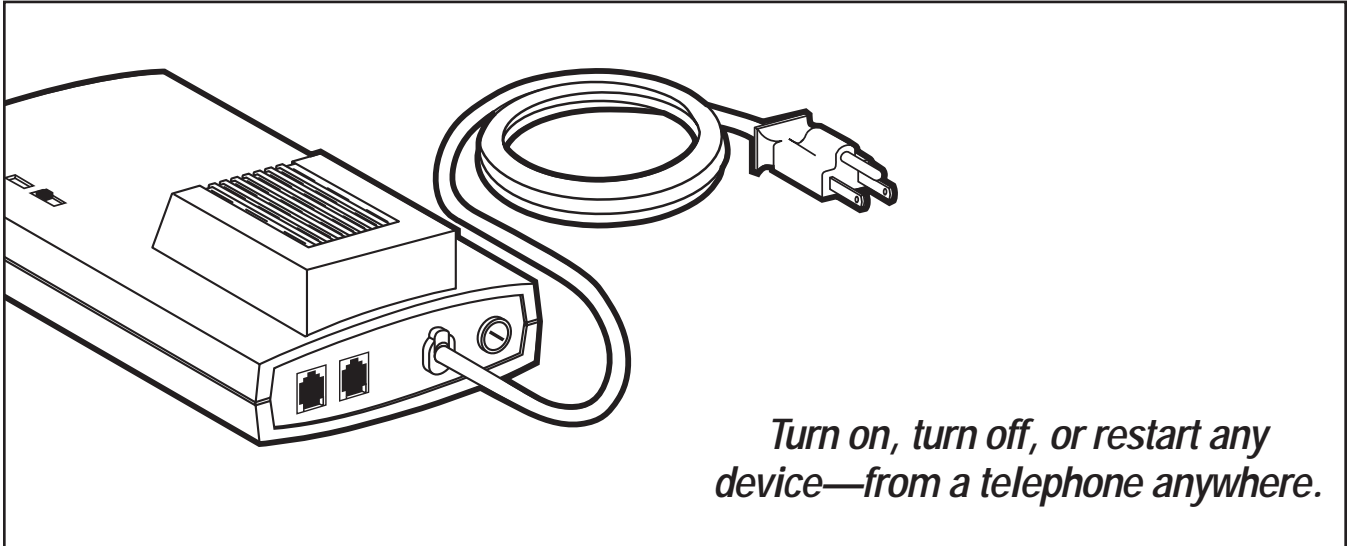


© 1999. All rights reserved.  
Black Box Corporation.

# BLACK BOX<sup>®</sup>

*The World's Source for Cabling and Network Connectivity<sup>SM</sup>*

## POWER MATE



*Turn on, turn off, or restart any device—from a telephone anywhere.*

### Key Features

- ▶ **Hooks up to existing phone line—no need for additional line.**
- ▶ **Provides On/Off or Pulse-Power-Off remote or manual control, up to 10 A.**
- ▶ **Extension port connects with phone, fax, modem, or other telephone device for ring-through operation.**
- ▶ **Programmable dual-level security.**

The Power Mate allows you to remotely control the AC power to an attached device via any tone-dial (DTMF) phone. It plugs right into an existing phone line, so there's no need to invest in an additional or special line. Plus it includes an extension port so you can still plug in a telephone device (phone, modem, or fax) for use on the same line.

A recessed, three-position slide switch on the Power Mate unit allows for local or remote power control. Set it to On or Off to keep the attached device on or off with no power control from the phone line. Calls will go directly to the extension phone device, just as if the Power Mate were not there. In the Auto position, phone-line control is enabled and the power status stays in the previous switch-position mode (either On or Off) until changed remotely.

#### Remote Power Control

When the Power Mate is set for remote power control, you can control the power from any touchtone phone. You decide the number of rings before the Power Mate picks up an incoming call, the security level, and the method of passing a call on to the extension.

Power Mate offers four different call-answer modes. In all modes, the unit will answer and listen for a power-control code. When a code is received, the unit will respond with the AC power status and allow power-control commands to be entered. When you're through entering commands, the Power Mate will either ring the extension device or disconnect the call.

**Normal Answer Mode:** Power Mate answers the call and sends a "ringback" signal (so it sounds

like the phone is still ringing), waiting between rings for the command control code. If no tones are received after two ringbacks, the unit will either ring the extension port or disconnect the call according to the security level setting. This mode is recommended if voice or fax calls are regularly received on the incoming line and you don't want callers to know that a control device is present.

**Answer-and-Prompt Mode:** Upon answering, Power Mate sends three short beeps to prompt you to enter the command control code. After a six-second pause, if no code is received, Power Mate will either ring the extension port or disconnect the call, depending on the security setting. Use this mode for a more

*Continued on Page Two*

# With Power Mate, you can maintain power control over the phone, from any location.

*Continued from Page One*

secure line or if you want a specific cue when control codes should be entered.

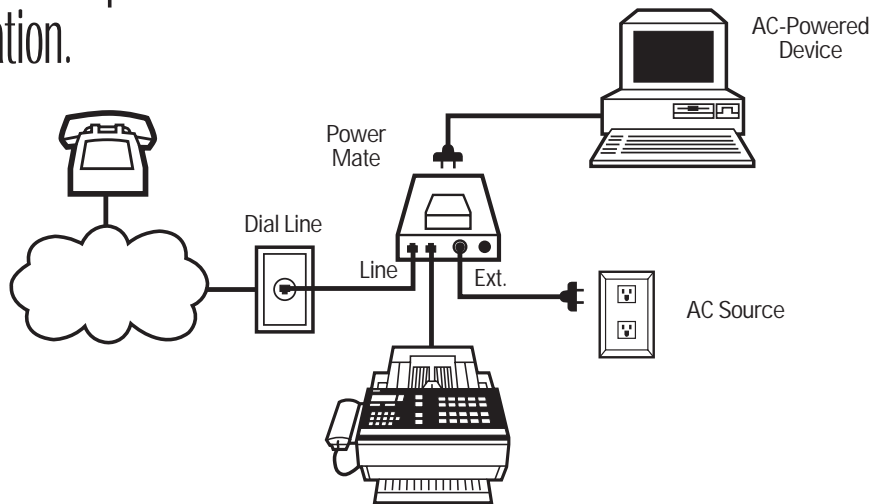
**Answer-and-Quiet Mode:**

After answering, Power Mate waits 10 seconds in quiet for a control-code entry. If none is received, the unit either rings the extension port or disconnects, depending on the security level. Answer-and-Quiet Mode is suggested if you want secure power control and the shortest time delay before the extension is rung or if you want to use your modem's wait-for-quiet answer command.

**Answer-and-Dial Tone Mode:**

Power Mate answers a call and responds with 4 seconds of dial tone followed by 6 seconds of silence. If no control code is entered during the silence, the unit either rings the extension port or disconnects, depending upon the security setting. This mode is good for automated access and when you want to use your modem's wait-for-second-dial-tone command.

**Power Control:** In any answer mode, Power Mate waits during the quiet part of the sequence for either a security code or "1" to be entered, prompting it to respond with the power status (one beep for Off, two beeps for On). You can then choose to change or reset the power, to ring the extension port, or to end the call.



To change the power setting, enter "#." The Power Mate switches from On to Off or vice versa. The unit then responds with the new status.

For Power Reset, enter "\*." The unit will pulse the power for a user-set interval (5 to 45 seconds). The Power Mate reports the power status at the start of the pulse, then again after the preset amount of time.

At any time after you enter the control/ security code, you can access the extension port by entering "0". After this is done, the Power Mate accepts no more power-control commands but continues to monitor the call. It hangs up the line upon call completion.

Power Mate can be set to automatically switch power to Off after a user-preset delay (5 to 90 seconds) upon call completion. This option is useful, for example, for switching a PC on before and

off after you use its modem on the Power Mate's extension port. Your PC stays secure—it's shut down unless someone who knows how to use the Power Mate calls to access it. If power is already set to Off when a call is terminated, then this feature is disabled.

**Security Settings**

Power Mate includes three user-settable security levels: Disabled, for power control only, or for both power-control and extension-port-ringing functions. For the second and third options, you set a one- to six-digit security code that will be required when calling to perform remote-control operations.

The power-only security level allows all callers unrestricted line access but requires entry of the security code for power control. When security is set for power and extension-port functions, a

security code must be entered by all callers in order to use either the Power Mate or the telephone device attached to its extension port.

Incorrect security-code entries are answered with a low error tone and a pause for a second attempt. If the second attempt is incorrect, Power Mate either rings the extension-port device or disconnects the call, depending on the security-level setting.

## Specifications

**Approvals** — FCC registered (complies with Part 68 and Part 15 Class B)

**Power** — Source: 120 VAC, 60 Hz; Switching: 10 A maximum

**Size** — 2.25"H x 4.5"W x 8.25"D (5.7 x 11.4 x 21.0 cm)

**Weight** — 2 lb. (0.9 kg)

## Ordering Information

ITEM	CODE
Power Mate.....	SWI070A