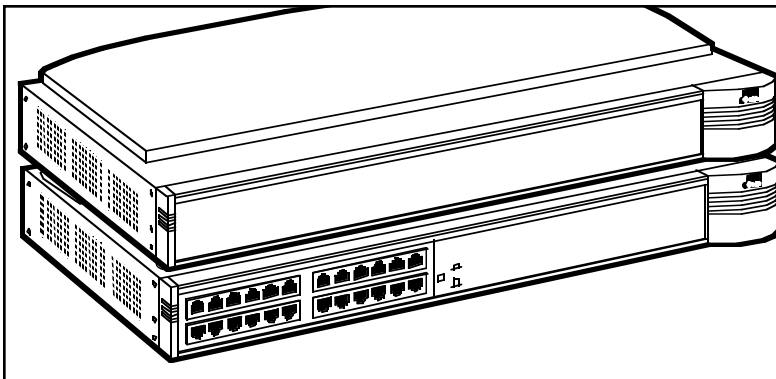


3COM SUPERSTACK II BASELINE SWITCHES AND DUAL-SPEED HUBS & OFFICECONNECT DUAL-SPEED HUB-8



Accommodate both 10- and 100-Mbps equipment through these powerful hubs and unmanaged switches.

12- or 24- Port SuperStack II Baseline Dual-Speed Hubs (3C16592, 3C16593)

In a perfect world, all of your networking equipment would connect at 100 Mbps. But let's face it—you probably have at least a few older PCs or peripherals that have a 10-Mbps connection. When you connect your equipment to the SuperStack II Baseline Dual-Speed Hub, which has autosensing 10/100-Mbps links on every port, your equipment will work at either 10 or 100 Mbps, as appropriate—without slowing down the rest of the network.

After installing the Hub, you can gradually migrate your network to run at 10 times the speed! As your budget allows, add new Fast Ethernet equipment or upgrade your existing Ethernet equipment.

These Hubs feature autosensing ports, front-panel diagnostic LEDs, and a MDI/MDIX port for cascading hubs without a crossover cable.

OfficeConnect Dual-Speed Hub 8 (3C16750)

Take advantage of Fast Ethernet without spending a fortune. The OfficeConnect Dual-Speed Hub 8 lets you connect both Ethernet and Fast Ethernet workstations and devices. It's perfect for smaller offices (with fewer than 20 users) that want to extend an existing Ethernet network into Fast Ethernet.

The Hub has eight autosensing 10BASE-T or 100BASE-TX shared ports and a built-in switch to seamlessly connect 10-Mbps and 100-Mbps users. And its Class II Fast Ethernet Repeater lets you easily connect two Fast Ethernet hubs.

Other features include plug-and-play installation and front-panel diagnostic LEDs for monitoring network activity.

3Com SuperStack II Baseline Switch 14-Port, (12) 10BASE-T + (2) 10/100 Ports (3C16460)

This is the switch you want when bandwidth is constrained and you don't want to spend a fortune to speed up the network.

This Switch has 12 10BASE-T switched ports and 2 switched 10/100-Mbps ports. While most of the ports provide Ethernet switching, the two autosensing uplink ports are the fast links you need to your servers or LAN backbone. These two ports are also MDI/MDIX switchable, so you can cascade hubs and switches and add high-speed downlink connections without using a crossover cable.

12- or 24- Port 3Com SuperStack II Baseline 10/100 Switches (3C16464, 3C16465)

Like the Baseline Dual-Speed Hubs, these switches make sure that your network is running as fast as your users are capable, whether it's at 10 or 100 Mbps. Each port is autosensing, so there's no danger of patching a PC or server to the switch at the wrong speed.

Autonegotiating full/half-duplex operation on each port doubles the speed of each network connection to 200 Mbps.

And the MAC addresses support up to 4000 network devices on your LAN.

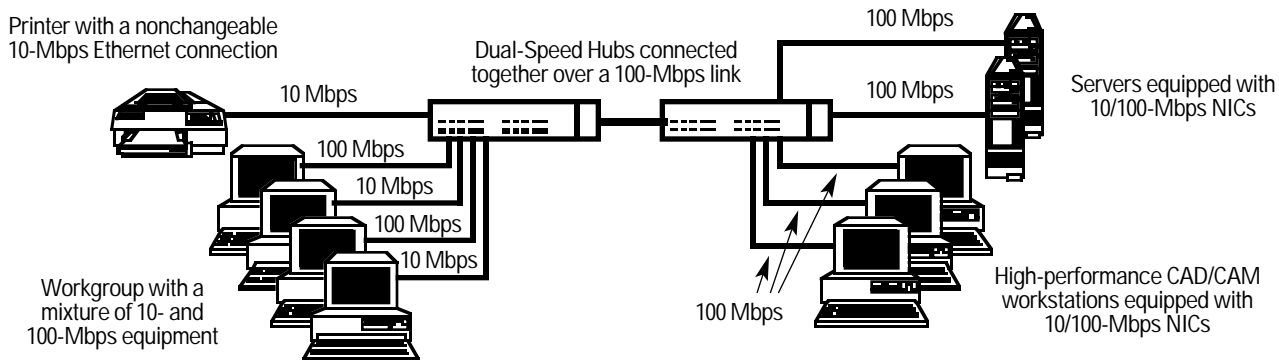
So why purchase a Baseline 10/100 Switch instead of a Baseline 10/100 Dual-Speed Hub?

- When switches are used as desktop connectivity devices, they provide far superior network performance by increasing the network's available bandwidth.
- Unlike hubs, switches don't limit you to a maximum number when they're connected in a series.
- When used near the core of a network, they eliminate bottlenecks and improve overall network throughput. These Switches support plug-and-play operation.

Mixing 10 and 100 Mbps in a Small-to-Medium-Sized Office.

The diagram below shows SuperStack II Dual-Speed Hubs used to provide a small-to-medium-sized office (up to 42 network connections) with a mix of shared 10-Mbps and shared 100-Mbps links to the desktop.

The Dual-Speed Hub autosenses those network devices capable of running at 100 Mbps (such as the network servers and the CAD/CAM workstations), and provides them with a 100-Mbps link. The link between the Dual-Speed Hubs will run at 100 Mbps.

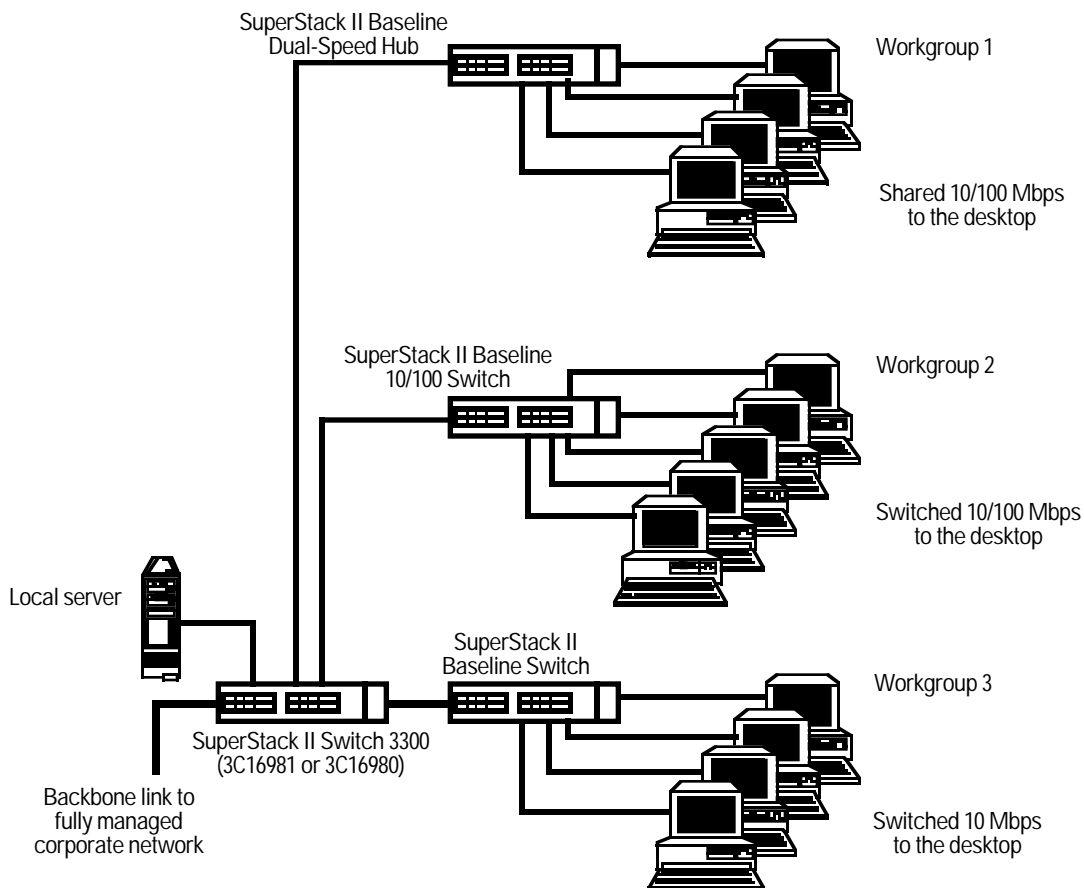


SuperStack II Baseline within the Managed Network Environment.

In this example, network management is used at the core of the network, and is provided out to the workgroup level on the floor shown below by the SuperStack II Switch 3300 (part number 3C16981 or 3C16980).

High-performance, unmanaged connections are then provided to users' desktops by the SuperStack Baseline products.

Used in this way, reliable, high-speed network connections can be delivered to the desktop while ensuring complete compatibility and fitting in with the corporate network structure.



Specifications

3C16592, 3C16593

Standards: ISO 8802/3, IEEE 802.3, IEEE 802.3u

Speed:
3C16592: (12) 10/100-Mbps ports;
3C16593: (24) 10/100-Mbps ports

Operation: Autosensing

Connectors: (12) or (24) shielded RJ-45 twisted pair, (1) Advanced RPS connector (Burndy type)

Indicators: Per unit: Power, Network Traffic (per segment), Collisions (per segment);
Per port: Link Status, Partition

MAC Addresses: 4000

Compliance: IEC 950, UL® 1950, CSA 22.2 No. 950, EN 60950, EN 55022 Class B and Class A, FCC Part 15 Subpart B Class A, ICES-003 Class A, VCCI Class B and Class A, AS/NZS 3548 Class B and Class A, EN50082-1, EN60068 (IEC 68)

MTBF:
3C16592: 459,360 hours (52 years);
3C16593: 307,563 hours (35 years)

Temperature Tolerance:
Operating: 0 to 50°C (32 to 122°F);
Storage: -10 to +70°C (14 to 158°F)

Humidity Tolerance: 10 to 95%, noncondensing

Power: 100–120 VAC/200–240 VAC, 50/60 Hz

Size: 7.1H x 43.9W x 26.7D cm (2.8"H x 17.3"W x 10.5"D)

Weight: 3C16592: 4.5 kg (10.1 lb.);
3C16593: 4.9 kg (11 lb.)

Fuse Protection: 5A

Power Inlet: IEC 320

Maximum Power Consumption:
3C16592: 84 W;
3C16593: 130 W

Maximum Heat Dissipation:
3C16592: 286 BTU/hr.;
3C16593: 443 BTU/hr.

3C16750

Standards: ISO 8802/3, IEEE 802.3

Speed: (8) 10/100-Mbps ports

Operation: Autosensing

Compliance: EMC, EN 55022 Class B, EN50082-1, FCC Part 15 Subpart B Class A, CSA C208.8 Class B, EN60068 (IEC 68), UL 1950, EN 60950, CSA 22.2 No. 950

Connectors: (8) 10/100BASE-TX RJ-45 ports

Indicators: Per port: Link, Status, Partition; Per unit: Power, Traffic, Collisions

Power: 100–120 VAC/200–240 VAC, 50/60 Hz, 33 VA

Size: 5.3 x 22.1 x 18.5 cm (2.1"H x 8.7"W x 7.3"D)

Weight: 0.5 kg (1.1 lb.)

3C16460

Standards: ISO 8802/3, IEEE 802.3, IEEE 802.3u

Speed: (12) 10-Mbps ports,
(2) 10/100-Mbps ports

Operation: Half- or full duplex

Connectors: (14) shielded RJ-45 twisted pair, (1) Advanced RPS connector (Burndy type)

Indicators: Per unit: Power; Per port: Network Traffic, Link Status, Speed (10/100-Mbps ports), Full Duplex (10/100-Mbps ports)

MAC Addresses: 750

Compliance: IEC 950, UL 1950, CSA 22.2 No. 950, EN 60950, EN 55022 Class B, FCC Part 15 Subpart B Class A, ICES-003 Class A, VCCI Class B, AS/NZS 3548 Class B, EN50082-1, EN60068 (IEC 68)

MTBF: 507,012 hours (57 years)

Temperature Tolerance:
Operating: 0 to 50°C (32 to 122°F);
Storage: -10 to +70°C (14 to 158°F)

Humidity Tolerance: 10 to 95%, noncondensing

Power: 100–240 VAC, 50/60 Hz

Size: 4.3H x 43.9W x 22.3D cm (1.7"H x 17.3"W x 8.8"D)

Weight: 2 kg (4.5 lb.)

Fuse Protection: 2A

Power Inlet: IEC 320

Maximum Power Consumption: 48 W

Maximum Heat Dissipation: 164 BTU/hr.

3C16464, 3C16465

Standards: ISO 8802/3, IEEE 802.3, IEEE 802.3u, IEEE 802.3x

Speed: (12) or (24) 10/100-Mbps ports

Operation: Half- or full duplex

Connectors: (12) or (24) shielded RJ-45 twisted pair, (1) Advanced RPS connector (Type 2)

Indicators: Per unit: Power; Per port: Network Traffic, Link Status

MAC Addresses: 4000

Compliance: IEC 950, UL 1950, CSA 22.2 No. 950, EN 60950, EN 55022 Class B and Class A, FCC Part 15 Subpart B Class A, ICES-003 Class A, VCCI Class B and Class A, AS/NZS 3548 Class B and Class A, EN50082-1, EN60068 (IEC 68)

MTBF:
3C16464: 706,015 hours (80 years);
3C16465: 575,803 hours (66 years)

Temperature Tolerance:
Operating: 0 to 50°C (32 to 122°F);
Storage: -10 to +70°C (14 to 158°F)

Humidity Tolerance: 10 to 95%, noncondensing

Power: 100–240 VAC, 50/60 Hz

Size: 7.1 x 43.9 x 26.7 cm (2.8"H x 17.3"W x 10.5"D)

Weight: 4 kg (8.8 lb.)

Fuse Protection: 5A

Power Inlet: IEC 320

Maximum Power Consumption: 200 W

Maximum Heat Dissipation: 628 BTU/hr.

Why Buy from Black Box? Our Tech Support.

According to a recent survey by Data Communications magazine, 90% of network managers surveyed say that getting the technical support they need is extremely important when choosing a vendor. But even though network managers pay anywhere from 10 to 20% of their overall purchase price for a basic service and support contract, the technical support and service they receive falls far

short of their expectations—and certainly isn't worth the \$10,000 to \$100,000 they paid.

At Black Box, we guarantee the best value and the best support. You can even consult our Technical Support Experts before you buy if you need help selecting just the right component for your application.

Don't waste time and money—call Black Box today at 724-746-5500.

Ordering Information

ITEM	CODE
SuperStack II Baseline Dual-Speed Hub	
12-Port	3C16592
24-Port	3C16593
OfficeConnect Dual-Speed Hub 8	3C16750
3Com SuperStack II Baseline Switch,	
14-Port, (12) 10BASE-T + (2) 10/100 Ports	3C16460
3Com SuperStack II Baseline 10/100 Switches	
12-Port	3C16464
24-Port	3C16465



Black Box offers the best warranty program in the industry—Fido Protection®. For more information, request **FaxBack 22512**.