

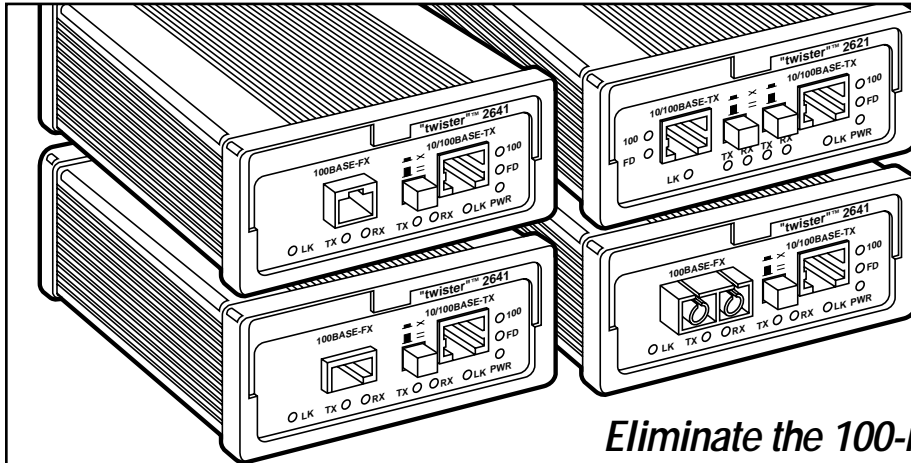


© 2000. All rights reserved.
Black Box Corporation.

BLACK BOX[®]

NETWORK SERVICES

SUPERTWISTER MEDIA CONVERTERS



Eliminate the 100-m distance limitation for Fast Ethernet networks.

Key Features

- ▶ **Extend the distance of 100-Mbps Ethernet networks at relatively low cost.**
- ▶ **Automatically translates between half-duplex 100BASE-TX and full-duplex 100BASE-FX.**
- ▶ **Multimode models support 1.2-miles fiber runs; single-mode models support runs up to 9.3 miles or 24.9 miles.**
- ▶ **1-MB internal buffer prevents packet loss.**

Obliterate the "official" distance limitations of Fast Ethernet and connect concentrated workgroups to your major backbones with SuperTwister Media Converters!

The SuperTwisters are half-duplex 100BASE-TX to full-duplex 100BASE-FX translators for extending Fast Ethernet networks. They separate data for longer network segments into independent, collision-free, bidirectional data paths. So you get affordable, reliable, and transparent Fast Ethernet media conversion without the usual distance limitations.

Use the SuperTwisters to build complex 100-Mbps networks of virtually any size—even switched networks with multiple repeaters. You can use a single central switch and connect additional repeaters through the SuperTwisters. This gives you the traffic

segmentation and increased performance of a switched environment without the cost.

The SuperTwisters' shielded RJ-45 connector supports 100BASE-TX links up to 100 m (328 ft.) long over unshielded 100-ohm Category 5 twisted-pair cable.

The SC and ST fiberoptic connectors on the SuperTwisters support 100BASE-FX links over a wide variety of fibre cable types. You can establish multimode links up to 2 km long over 50/125-, 62.5/125- or 100/140- μ m duplex cable. Or you can run 8.3/125-, 8.7/125-, 9/125- or 10/125- μ m duplex single-mode cable as far as 5 miles—or even as far as 24.8 miles (with our "-40KM" models).

They also have 1 MB of buffer memory, so they can temporarily hold and buffer Ethernet packets until the packets can be delivered without collisions. And a full

complement of LEDs can tell you the units' status at a glance.

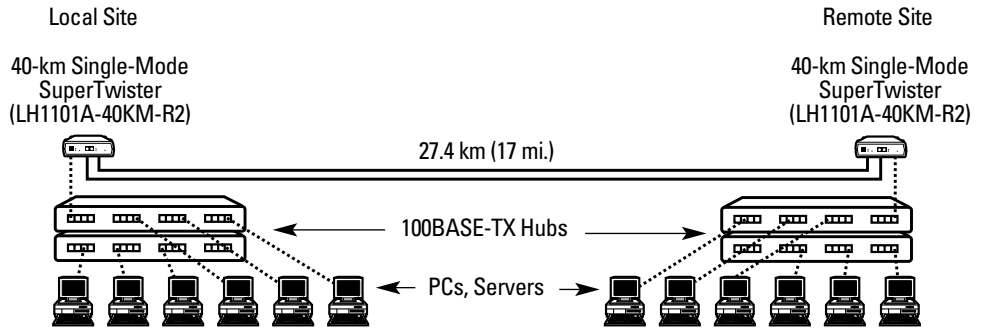
These highly compact devices are simple to use and require absolutely no hardware or software setup. Just run cable from a SuperTwister to the attached devices, plug it in, and it's ready to go.

Our expanded SuperTwister product line includes models that convert 10BASE-FL to 100 BASE-FX Fast Ethernet or 10BASE-FL to 100BASE-FX with SC or ST[®] connectors. We also have OC-3 and Gigabit models that convert multimode signals to long-distance single-mode signals.

So whether you need MT-RJ, VF-45, multimode or single-mode SC and ST or OC-3 or Gigabit connections, we've got the SuperTwister for you.



Stretch the maximum 100BASE-TX point-to-point distance from 328 ft. to 2, 15, or 40 km 1.2, 9.3, or 24.9 mi..



Specifications

Compliance: IEEE 802.3/IEEE 802.3u

Safety: FCC, UL[®], TUV, CSA

Indicators: Power, Link, Activity

Connectors: LH1100A-R2, LH1102A:

(1) RJ-45, (1) pair of ST;
LH1100A-SC-R2, LH1101A-R2,
LH1101A-40KM-R2: (1) RJ-45,
(1) pair of SC; LH1103A,
LH1103A-LH, LH1110A: (2) pairs of
SC; LH1104A: (1) RJ-45, (1) MT-
RJ; LH1105A: (1) RJ-45, (1) VF-45;
LH1106A: (1) pair of ST, (1) pair of
SC; LH1107A: (2) pairs of ST;
LH1108A: (2) RJ-45

Temperature Tolerance:

Operating: 0 to 55°C;

Storage: -25 to
+70° C

Humidity Tolerance: 5 to 95%
noncondensing

Enclosure: Metal

Power: 90 to 260 VAC, 50 to 60 Hz,
autosensing

Size: 4.8"H x 3.3"W x 1.7"D (12.2 x
8.4 x 4.3 cm)

Weight: 1.4 kg including
power supply

Ordering Information

ITEM	CODE
SuperTwister Media Converters (Standalone):	
10/100TX to 100FX/MM (ST).....	LH1100A-R2
10/100TX to 100FX/MM (SC).....	LH1100A-SC-R2
10/100TX to 100FX/SM (SC).....	LH1101A-R2
10/100TX to 100FX/SM (SC)	
40 km	LH1101A-40KM-R2
10FL/MM (ST) to 10/100TX.....	LH1102A
ATM OC-3/MM to ATM OC-3/SM (SC)	LH1103A
ATM OC-3/MM to ATM OC-3/SM (SC)	
Long Haul	LH1103A-LH
10/100TX to 100FX/MM (MT-RJ)	LH1104A
10/100TX to 100FX/MM (VF-45).....	LH1105A
10FL/MM (ST) to 100FX/MM (SC)	LH1106A
10FL/MM to 100FX/MM.....	LH1107A
10/100TX to 10/100TX	LH1108A
1000SX/MM to LX/SM (SC)	LH1110A

You might also want to order...

CAT5 Solid-Conductor Cable, 4 Pairs,
Straight-Through-Pinned, PVC,

10 ft. (3.1 m).....EYN737MS-0010

Bulk Duplex Multimode Fiberoptic Cable, PVCEFN062

SC-SC Terminated Single-Mode Fiberoptic

Cable, PVC

Primary CAT5 Surge Protector (for use at the

point where the 100BASE-TX line enters

the building)

Secondary CAT5 Surge Protector (for use at the

point where each 100BASE-TX line is connected

to the SuperTwister or the attached device) ...SP251A



Black Box offers the best warranty program in the industry—Fido Protection[®]. For more information, request **FaxBack 22512**.

