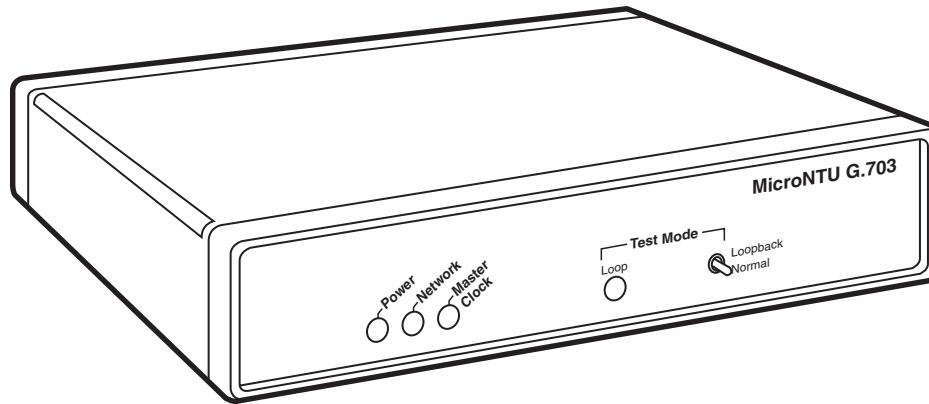


BLACK BOX[®]

NETWORK SERVICES

© Copyright 1998. All rights reserved.
Black Box Corporation.

MicroNTU G.703



*A G.703 modem,
interface converter,
and rate adapter in
one compact device.*

For your convenience, the MicroNTU comes in Standalone and Card versions.

Key Features

- ▶ Supports EIA-530 (V.36/RS-422), X.21, or V.35 terminal interfaces.
- ▶ Network data rates up to 2.048 Mbps.
- ▶ Makes dual coax BNC (75-ohm) and twisted-pair (120-ohm) network connections.
- ▶ Standalone models feature rate adaption for 256 Kbps, 512 Kbps, and 1.024 Mbps.
- ▶ Internal, external, and receive loopback clocking.

Overview

The MicroNTU gives you everything you need to make G.703 connections. Now you can easily connect bridges or routers with RS-530, X.21 (MT241A only supports X.21), or V.35 (standalone models only) interfaces to G.703 networks.

The MicroNTU is truly international, too. It's CE approved, so it can be used in most European countries. Best of all, the device's versatility in data rates and interfaces makes it ideal for a variety of LAN and WAN environments. Use it three ways:

Use the MicroNTU as a modem.

As a modem, the MicroNTU sends unstructured, synchronous 2.048-Mbps data from a G.703/E1 network to a router, bridge, or mux.

Use the MicroNTU as an interface converter.

In this application, the MicroNTU accepts either 75-ohm (dual coax) or 120-ohm (twisted-pair) G.703/E1 signals and converts them so your RS-530, X.21, or V.35 equipment can understand them. Dual coax and modular interfaces are located on the MicroNTU's rear panel. All interfaces are switch-selectable and use an HD26 connector.

Use the MicroNTU as a rate adapter.

In this application you can use the MicroNTU to connect a device with a lower bandwidth (256 Kbps, 512 Kbps, or 1.024 Mbps) to a 2.048-Mbps G.703/E1 link.

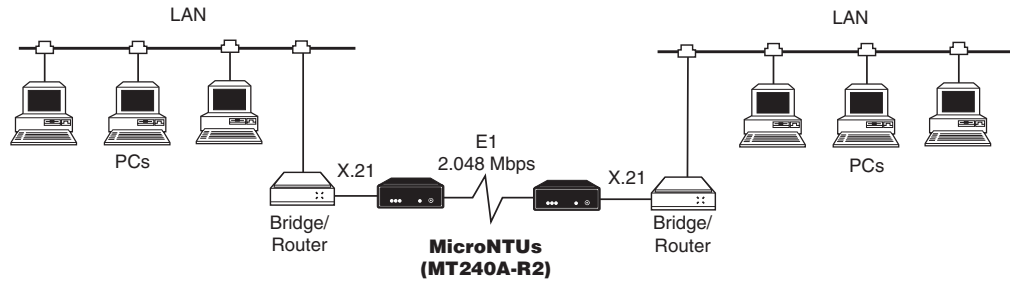
The MicroNTU operates from internal, external, or network (received loop) clock

sources. In addition, the device includes loopback diagnostics and four front-panel LEDs for easy monitoring.

Choose from standalone or card versions. Because the Standalone model features both 75- and 120-ohm connections, no special adapters are needed.

The Card version features all the benefits of the standalone unit—without the multiplexor or V.35 capabilities.

Use the MicroNTU G.703 standalone model to split off a smaller piece of bandwidth for LAN communications.



Technically Speaking

- A more typical application than the one illustrated at the top of this page is to use the MicroNTU to connect a bridge or router—without a native G.703 interface—to a 2.048-Mbps G.703 network. The bridge or router may have an RS-530 (V.36/RS-422), V.35, or X.21 interface. The G.703 network may be coax or twisted pair.
- The MicroNTU Card features mid-plane architecture for full hot swappability. It's available in two versions—75-ohm dual coax and 120-ohm twisted pair. The 75-ohm model includes dual BNC connectors and a DB15 connector for X.21 terminal connections. The 120-ohm model includes a modular jack and a DB25 connector

for RS-530 (V.36/RS-422) terminal connections.

Additional equipment you may need:

- ◆ HD26M/DB25 Adapter Cable (EHN092-530)
- ◆ HD26M/M34 Adapter Cable (EHN092-V35)
- ◆ HD26M/DB15 Adapter Cable (EHN092-X21)

Specifications

Interface — Network: G.703; Terminal: RS-530 (V.36/RS-422), X.21 (MT241A supports only X.21) on HD26, V.35 (standalone models only)

Speed — Network: 2.048 Mbps; Terminal: 256 Kbps, 512 Kbps, 1.024 Mbps, 2.048 Mbps

Diagnostics — Loopback

Clocking — Internal, network (receive loop)

Indicators — (5) LEDs: Power, Network, Master Clock and Loop

Power — 230 VAC/50 Hz or 115 VAC/60 Hz, switch-selectable; 48 VDC

Size — Standalone model: 18.5 x 16.8 x 41 cm (7.3"H x 6.6"W x 1.6"D); Card model: 7.9 x 2.4 x 11.2 cm (3.1"H x .95"W x 4.4"D)

Weight — Standalone model: 0.9 kg (2 lb.)

For these and other components...

Call our expert Technical Support Staff for all your Modem and Accessory needs. They'll help you find the best equipment for your application.

Ordering Information

This information will help you place your order quickly.

PRODUCT NAME	ORDER CODE
MicroNTU G.703	
Standalone AC.....	MT240A-R2
48-VDC	MT240A-48V
Card (Fits MicroRACK System)	
120-Ohm	MT245A
75-Ohm	MT246A
MicroNTU G.703↔X.21.....	MT241A