

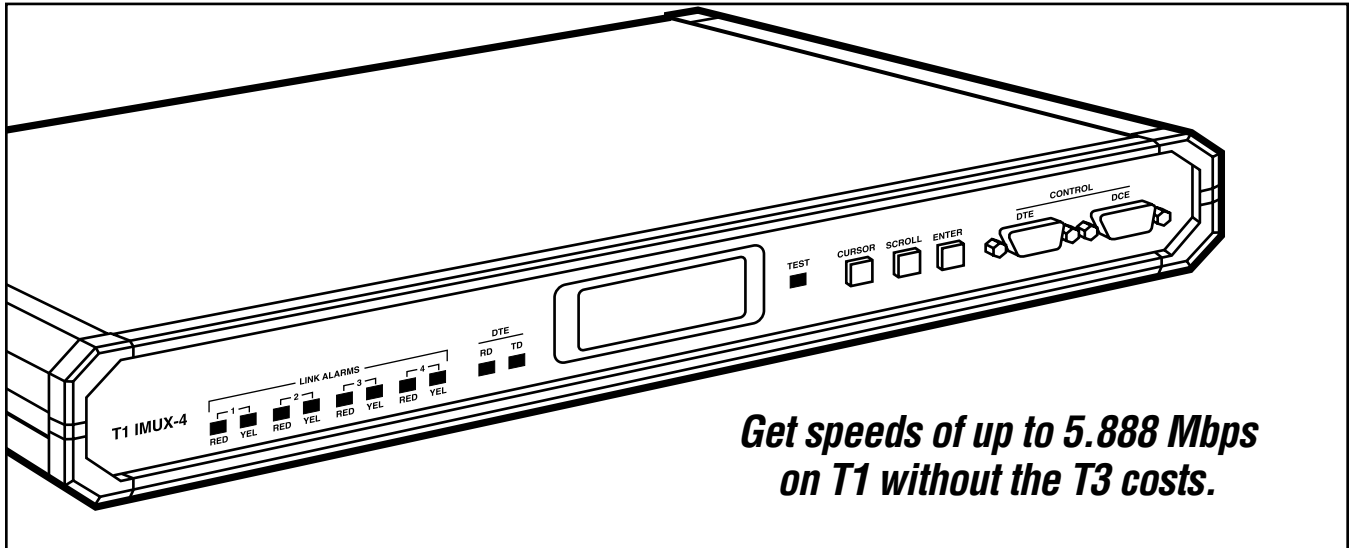


© 2000. All rights reserved.
Black Box Corporation.

BLACK BOX[®]

NETWORK SERVICES

T1 IMUX



*Get speeds of up to 5.888 Mbps
on T1 without the T3 costs.*

Key Features

- ▶ **Combines two or four T1 lines into a single DTE connection to create a higher-rate logical channel.**
- ▶ **Speeds ranging from 1.472 to 5.888 Mbps—on T1!**
- ▶ **Compensates for differential delay.**
- ▶ **Built-in BERT and loopbacks.**
- ▶ **V.35 interface.**

You don't always need T3 to get the speeds your application demands. The T1 IMUX aggregates the bandwidth of up to four T1 lines, thus creating a higher-rate logical channel. Resulting speeds range from 1.472 to 5.888 Mbps.

The T1 IMUX provides the extra bandwidth you need for the times when you need more bandwidth than regular T1

provides. It also serves as a perfect ATM-DXI extension to fractional T3 ATM networks.

The multiplexor also improves your high-speed connection's fault tolerance by providing load sharing over redundant links. The link providing communication will always remain up and running even if a T1 link should go down. And the logical channel remains open and running at a reduced

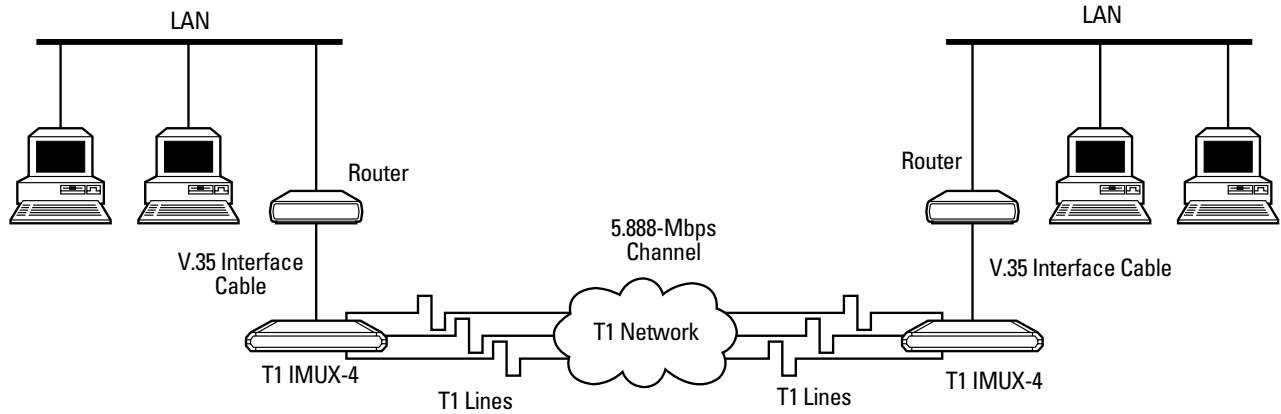
speed through automatic rate fallback. The T1 IMUX returns to its original rate when failed links are recovered.

T1 IMUX is capable of piecing together the original data stream even when a differential delay of up to 16 ms occurs between T1 lines.

System timing options include internal clock, loopback, and station clock.



Combine two or four T1 lines into a single DTE connection.



Why Buy From Black Box? Exceptional Value. Exceptional Tech Support. Period.

Recognize any of these situations?

- You wait more than 30 minutes to get through to a vendor's tech support.
- The so-called "tech" can't help you or gives you the wrong answer.
- You don't have a purchase order number and the tech refuses to help you.
- It's 6 p. m. and you need help, but your vendor's tech support line is closed.

According to a survey by Data Communications magazine, 90% of network managers surveyed say that getting the technical support they need is extremely important when choosing a

vendor. But even though network managers pay anywhere from 10 to 20% of their overall purchase price for a basic service and support contract, the technical support and service they receive falls far short of their expectations—and certainly isn't worth what they paid.

At Black Box, we guarantee the best value and the best support. You can even consult our Technical Support Experts before you buy if you need help selecting just the right component for your application.

Don't waste time and money—call Black Box today.

Specifications

Data Channels — 2 or 4

Speed — T1: 1.544 Mbps;
Data: Any multiple of 1.472 Mbps, up to 5.888 Mbps

Interface — T1: ITU Rec. G.703, G.704, AT&T® TR-62411, PUB 54016; Data: V.35

Connectors — MT280A: (1) M/34 F for V.35, (2) RJ-48, (1) RJ-45 F for station clock, (2) DB9 M/F;

MT285A: (1) M/34 F for V.35, (4) RJ-48, (1) RJ-45 F for station clock, (2) DB9 M/F

Indicators — Local and remote sync loss; Data port: TD, RD, TEST

Power — 115/230 VAC, 60/50 Hz,

Size — 4.3 x 43.2 x 24.1 cm

Weight —2.3 kg

Ordering Information

ITEM	CODE
T1 IMUX-2	MT280A
T1 IMUX-4	MT285A
<i><u>You may also need:</u></i>	
V.35 Interface Cable, 3-m, Male/Male	EYN450-0010-MM

